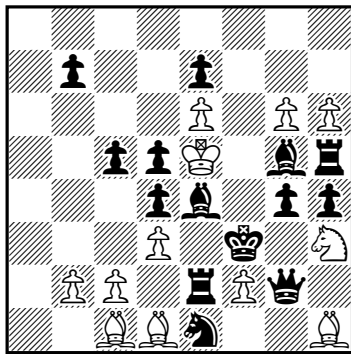


**World Championship in Composing for Individuals (WCCI)
2016-2018 - Section H (retro problems)**

1

Joaquim Crusats
Die Schwalbe, 2017
December, n. 17287



(12+14) release the position

8/1p2p3/4P1PP/2ppK1br/3pb1pp/3P1k1N/1PP1rPq1/2BBn2B

Both balances are closed.

White balance: $12 + \text{fxexd} + \text{gxp} + \text{hxg} = 16$

Black balance: $14 + \text{axbxc} \rightarrow \text{c8=B} = 16$ ($a7 \rightarrow a1$)

The cage can only be released with help of the wSh3 screening on e3, then: $-(n).d2-d3$ $Bd3-e4$ $-(n+1).Kf5-e5$ $B\sim e3+$ $-(n+2).e5-e6$ and the position unfolds. However, Black has only one tempo move available ($\dots c6-c5$ owing to the promotion on c8). Thus, a foreplan is needed to provide enough waiting moves for Black.

Solution: $-1.Be3-c1$ **Bf5-e4** $-2.Bc1-e3$ **Be3-g5+** (first exchange of retro-pinned units) $-3.d2-d3!$ (this move has to be played since the wS can only reach e3, without wasting the tempo of the bPc5, via d3) $-3\dots Rg5-h5$ $-4.Sf4-h3$ $Rh5-g5$ $-5.Sd3-f4$ $Rg5-h5$ $-6.Sb4-d3$ $Rh5-g5$ $-7.Sa6-b4$ $Rg5-h5$ $-8.Sc7-a6$ $Rh5-g5$ $-9.Se8-c7$ $Rg5-h5$ $-10.Sf6-e8$ $Rh5-g5$ $-11.Se4-f6$ **Bg5-e3** $-12.Sd6-e4$ **Be4-f5+** (second exchange of retro-pinned units back to their original place); and now the initial idea works: $-13.Sc4-d6$ $c6-c5$ (tempo) $-14.Se3-c4$ $Bd3-e4$ $-15.Kf5-e5$ $B\sim e3+$ $-16.e5-e6$ and the position unfolds.

The first rearrangement of the black bishops on the battery lines is motivated by the need to provide waiting moves for Black; note that, after the maneuver, retracting the wPg6 or the bPg4 to g5 creates an illegal cluster on five squares, and retracting the wPh6 or the bPh4 to h5 irreversibly locks the cage forever. The second rearrangement is needed because, after the first maneuver, the cage has been further locked owing to the fact that the wS cannot screen on g5 because of an illegal retro-check.

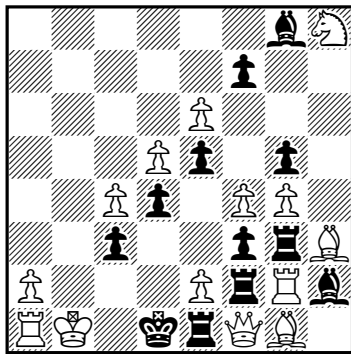
Non thematic tries: $-1.Sf4-h3$ $Re3-e2$ $-2.Se2-f4+$ $c6-c5$ $-3.d2-d3$ $Ra3-e3$ $-4.??$ (retro-stalemate for White, one white tempo is missing); $-1.Be3-c1$ $Bf5-e4$ $-2.Bc1-e3$ $Be3-g5+$ $-3.Sf4-h3$ $Rd2-e2$ $-4.Se2-f4+$ any $-5.??$ (retro-stalemate for White); $-1.Sf4-h3$ $Q\sim g2$ $-2.Sg2-f4+$ but the bQ cannot be used in the retro-pinning lines.

This is the first presentation of a **back and forth exchange of two retro-pinned units** in a classical-style retro problem.

**World Championship in Composing for Individuals (WCCI)
2016-2018 - Section H (retro problems)**

2

Joaquim Crusats
Phénix, 2018
September (287), n. 8252



(14+12) release the position

6bN/5p2/4P3/3Pp1p1/2Pp1PP1/2p2pB/P3PrRb/RK1krQB1

White balance: $14 + gxf + hxg = 16$ ($h2 \rightarrow h8$)

Black balance: $12 + bxc + cxd + dxg + a-bP = 16$ ($b7 \rightarrow b1=R$)

-1.Sg6-h8 **Bh7-g8** -2.Se7/h4-g6 Bg8-h7+ -3.Sf5-e7/h4 **Bh7-g8** -4.Sd6-f5 Bg8-h7+ -5.Se4-d6 **Bh7-g8**
-6.Sc5-e4 Bg8-h7+ -7.Sd3-c5 **Bh7-g8** -8.Sb4-d3 Bg8-h7+ -9.Sc2-b4 **Bh7-g8** -10.Sa3-c2 Bg8-h7+
-11.Sc2xPa3 **Bh7-g8** -12.Sb4-c2 Bg8-h7+ -13.Sd3-b4 **Bh7-g8** -14.Sc5-d3 Bg8-h7+ -15.Se4-c5 **Bh7-g8**
-16.Sd6-f5 Bg8-h7+ -17.Sf5-d7 **Bh7-g8** -18.Se7/h4-f5 Bg8-h7+ -19.Sg6-e7/h4 **Bh7-g8** -20.Sh8-g7 Bg8-
h7+ -21.h7-h8=S a4-a3 -22.h6-h7 a5-a4 -23.h5-h6 h6xSg5 -24.Se4-g5 **Bh7-g8**; then e.g.: -25.Sd2-e4 Bg8-
h7+ -26.Sb3-d2 a7/a6-a5 -27.**Sc1-b3** Kd2-d1 -28.h4-h5 Ke3-d2 -29.Kc2-b1 etc.

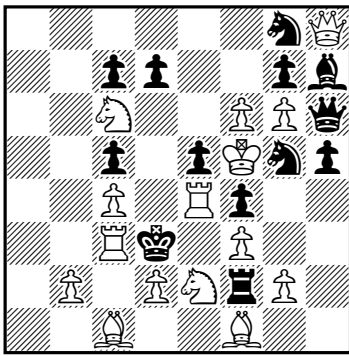
Full both ways staircase of the wS (unavoidable) for the first time!

The problems shows 12 necessary **screenings** (record)!

**World Championship in Composing for Individuals (WCCI)
2016-2018 - Section H (retro problems)**

3

Joaquim Crusats
60th WCCC - Dresden, 2017
Champagne Tourney, Prize



(15+13) release the position

6nQ/2pp2pb/2N2PPq/2p1pKnp/2P1Rp2/2Rk1P2/1P1PNrP1/2B2B2

Both balances are closed.

White: 15 + bxc = 16

Black: 13 + exf + hxg + either [the a-bP on its file (a2→a8)] or [axb (a2→b8, a7→a1)] = 16

The cage can only be unlocked with ...e7-e5 once the ds-bB is back to f8; the ds-bB has to be uncaptured with a pawn bypass maneuver, so the a-bP was not captured on its file.

The wSc6 is promoted; an original wS will be uncaptured on c6 (**generalized Pronkin**)

The bSg5 is original; a promoted bS will be uncaptured on g5 (**generalized anti-Pronkin**)

Try: -1.Rc2-c3# Se6-g5 -2.Sb8-c6 c6-c5 -3.Sa6-b8 Sc5-e6 -4.Sb8-a6 Sb3-c5 -5.Sa6-b8 Sa1-b3 -6.Sb8-a6 a2-a1=S -7.Sa6-b8 a3-a2 -8.Sb8-a6 a4-a3 -9.b7-b8=S a5-a4 -10.b6-b7 a7/6-a5 -11.a5xBb6 Bc5-b6 -12.a4-a5 Bf8-c5 and White is retro-stalemated.

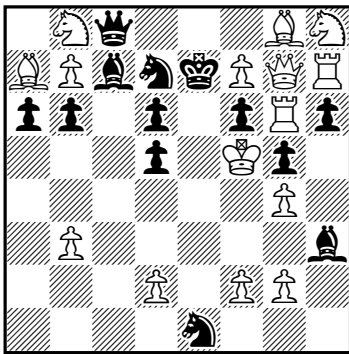
Solution: -1.Rc2-c3# Se6-g5 -2.Sb8-c6 Sf8-e6 -3.g5-g6 Sg6-f8+ -4.h4xSg5! (**thematic**) Se6-g5 -5.Sa6-b8 c6-c5 -6.Sb8-a6 Sc5-e6 -7.Sa6-b8 Sb3-c5 -8.Sb8-a6 Sa1-b3 -9.Sa6-b8 a2-a1=S -10.Sb8-a6 a3-a2 -11.Sa6-b8 a4-a3 -12.Sb8-a6 a5-a4 -13.b7-b8=S a6-a5 -14.b7-b6 a7-a6 -15.a5xBb6 Bc5-b6 -16.a4-a5 Bf8-c5 -17.h2/3-h4 e7-e5 and the position unfolds. Eventually an original wS will be uncaptured on c6 (**thematic**).

Other thematic tries: The theme-cooking retraction h3xSg4? has to be ruled out (it is tempo-allowed for White); this is done with the aid of an illegal retro-check if the bS retracts to e3. Likewise, the other theme-cooking retraction ...b6xSc5? has to be ruled out too: -1.Rc2-c3# Se6-g5 -2.Sb8-c6 Sf8-e6 -3.g5-g6 Sg6-f8+ -4.h4xSg5 Sf7-g5 -5.Sc6-b8 Sd8-f7 -6.Sb8-c6 Sb7-d8 -7.Sc6-b8 Sa5-b7 -8.Sb8-c6 Sb3-a5 -9.Sc6-b8 Sa1-b3 -10.Sb8-c6 a2-a1=S -11.Sc6-b8 a3-a2 -12.Sb8-c6 a4-a3 -13.b7-b8=S a5-a4 -14.b6-b7 a6-a5 -15.a5xBb6 a7-a6 -16.a4-a5 Ba5-b6 -16.h2/3-h4 b6xSc5? illegal because when the cage is opened (ds-bB→f8 & ...e7-e5) the bRa8 is caged out! So both thematic knights necessarily need to be uncaptured in the same squares they occupy in the diagram position.

**World Championship in Composing for Individuals (WCCI)
2016-2018 - Section H (retro problems)**

4

Joaquim Crusats
Phénix, 2016
December (268), n. 7713



(15+13) release the position

1Nq3BN/BPbnkPQR/pp1p1pRp/3p1Kp1/6P1/1P5b/3P1PP1/4n3

White balance: $15 + \text{cxd (not exd)} = 16 \text{ (c2} \rightarrow \text{c8)}$

Black balance: $13 + \text{a6xXb7 (not c6xXb7)} + \text{e6xXf7} + \text{h2xXg3} = 16 \text{ (e7} \rightarrow \text{e1)}$

Try: -1...Kd8-e7 -2.Ke6-f5 e2-e1=S -3.Kf5-e6 e3-e2 -4.Ke6-f5 e4-e3 -5.Kf5-e6 e5-e4 -6.Ke6-f5 and Black is retro-stalemated.

Solution: -1...Kd8-e7 -2.Ke6-f5 Sd3-e1 -3.Kf5-e6 Se5-d3 -4.g3-g4 Sg4-e5+ -5.h2xSg3! Sf1-g3+ -6.Kf6-e5 Se3-f1 -7.Kf5-e6 Sc2-e3+ -8.Ke6-f5 Se1-c2 -9.Kf5-e6 e2-e1=S -10.Ke6-f5 e3-e2 -11.Kf5-e6 e4-e3 -12.Ke6-f5 e5-e4 -13.Kf5-e6 e7-e5 -14.e6xRf7 and the position unfolds.

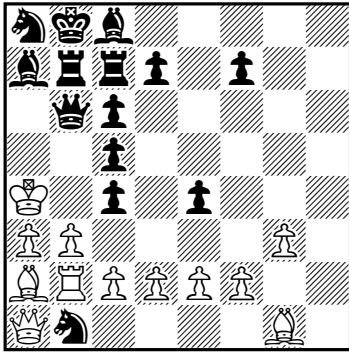
The problem shows an anti-Pronkin bSe1 motivated by retro-opposition, with no king in check in the diagram position to set the moving side. The motivation for the nature of the uncaptured anti-Pronkin unit is unusual: a knight was in retro-opposition and could not unpromote, and then the reason why a new knight has to be uncaptured is precisely to avoid yet another retro-opposition (-5.h2xQ/Rg3?).

The problem shows an original mechanism of **retro-opposition** as a motivation for the **anti-Pronkin** theme.

**World Championship in Composing for Individuals (WCCI)
2016-2018 - Section H (retro problems)**

5

Joaquim Crusats
Problemas, 2016
October (N. 16), p. 401



(12+14) last 16 single moves?

nkb5/brrp1p2/1qp5/2p5/K1p1p3/PP4P1/BRPPPP2/Qn4B1

Try: -1.Bh2-g1 e5-e4 -2.g2-g3 e6-e5 -3.Be5-h2 e7-e6 -4.Bc3-e5?? – retrostalemate for Black; if Black had a retro tempo here, -4...~, the position would be released after -5.Ba5-c3 Qa6-b6 -6.B~xSa5! If -4.Bc3xQ/R/Se5 Q/R/S~-e5 -5.Ba5-c3 Qa6-b6 -6.Bb4(c3)-a5 Qb6-a6+ -7.Ba5-b4(c3) Qb6-a6, retro-perpetuity; -6.Kb4-a4? b6xc5+, illegal cluster in the NW corner of the board.

Solution: -1.Bh2-g1 e5-e4 -2.Bg1xPh2! (**unique uncapture**) h3-h2 -3.Bh2-g1 h4-h3 -4.Bg1-h2 g5xBh4! (**unique uncapture**) -5.Bh2-g1 g6-g5 -6.Bf6-h4 e6-e5 -7.Bc3-f6 e7-e6 -8.Ba5-c3 Qa6-b6 etc.

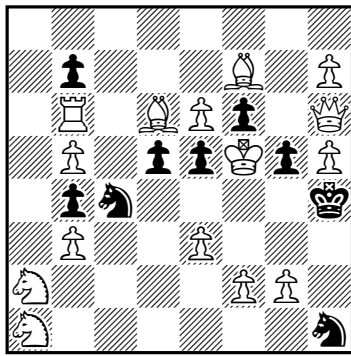
In the diagram position there are seven wPs and necessarily a promoted bishop, thus a wQ cannot be uncaptured as a screening unit. An uncaptured black officer cannot uncapture the shielding ls-wB because g8 is a light-square. A ds-bB cannot be uncaptured as a shield because it cannot leave the southern cage.

In order to open the cage a maneuver involving two precise uncaptures is required.

**World Championship in Composing for Individuals (WCCI)
2016-2018 - Section H (retro problems)**

6

Joaquim Crusats
Problemas, 2016
April (N. 22), p. 622



(15+9) Proca -2 & #1

8/1p3B1P/1R1BPp1Q/1P1ppKpP/1pn4k/1P2P3/N4PP1/N6n

Cyclone Proca retractor -2 & #1 with a 3 Kiss cycle

		a5xRb4	c5xRb4	
Ra6-b6?		Sc1-a2	Rc6-a6	S~-c4!
Rc6-b6!		Ra6-c6	Sc1-a2	

-1.Ra6-b6? (zz)

-1...a5xRb4 -2.Sc1-a2 & 1.hxg6 e.p.#

-1...c5xRb4 -2.Rc6-a6 & 1.hxg6 e.p.#

-1...g7-g5 -2.Qg6-h6 & 1.Qg4#

but -1...S~-c4!

-1.Rc6-b6! (zz)

-1...a5xRb4 -2.Ra6-c6 & 1.hxg6 e.p.#

-1...c5xRb4 -2.Sc1-a2 & 1.hxg6 e.p.#

-1...g7-g5 -2.Qg6-h6 & 1.Qg4#

-1...S~-c4 -2.Rc1-c6 & 1.RxSh1#

White balance: 15 + (axRb or cxRb) = 16

The wR is the only missing white piece on the board.

Black balance: 9 + axb + six captures by the East side pawns = 16

If cxRb then bPa7→a1; if axRb then bPc7→c1.

The first cyclone retractor with a mechanism based on retroanalytical concepts. Previous examples of cyclone -2 & #1 retractors do exist, composed using conventional cyclone mechanisms, but these problems do not involve any retro-concept whatsoever (not even retractions of irreversible moves) and formally work as a directmate threemovers in which Black is deprived of a defensive move.

The problem above illustrates how new mechanisms and motivations to achieve typical modern themes of directmate twomovers can be expressed in a -2 & #1 taking advantage of retro-concepts.