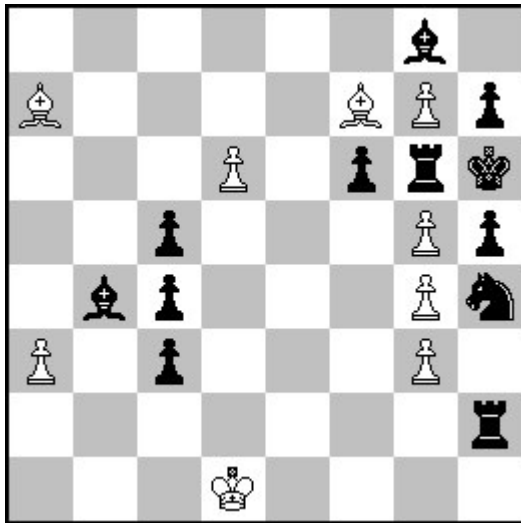


## Klaus Wenda (Austria) entry no.1

-7 & #1 Proca Anticirce



White: Kd1 La7 Lf7 a3 d6 g3 g4 g5 g7 (9)

Black: Kh6 Tg6 Th2 Lb4 Lg8 Sh4 c3 c4 c5 f6 h5 h7 (12)

### Problem Paradise 84/2018, no. R251

**1.Ke2-d1! Sg2-h4+ 2.Pd5-d6! Zugzwang Ba5-b4** [Black starts a pendulum] **3.Bb6-a7 Bb4-a5 4.Ba7-b6 Ba5-b4 5.Bb6-a7 Bb4-a5 6.Ba7-b6!**[that's a legal move, see theme description] **Pc7-c5!** [forced to declare 6.Ba7-b6 as a legal move] **7.Bg1-a7 & fw. 1.B:h2(Bc1)#**

**Thematical try:** 1.Kc2-d1? Sg2-h4+ 2.Pd5-d6 Ba5-b4 3.Bb6-a7 Bb4-a5 4.Ba7-b6 Ba5-b4 5.Bb6-a7 Bb4-a5 6.Ba7-b6? [this move is illegal now, see theme description]

**Description of the theme:** The main question is the legality of...6.Ba7-b6. The position arising is on the first view identical with that after...2.Pd5-d6, this means you'll see it optically for the third time. Nevertheless there is a subtle difference between both positions: White has an additional option to move: **Pd5:c6ep.(Pc2)** which is proved by move B6 Pc7-c5! This is forced to ensure the legality of W6. In the try the square c2 is occupied preventing an ep.-uncapture, therefore White was not allowed to move 6.Ba7-b6.

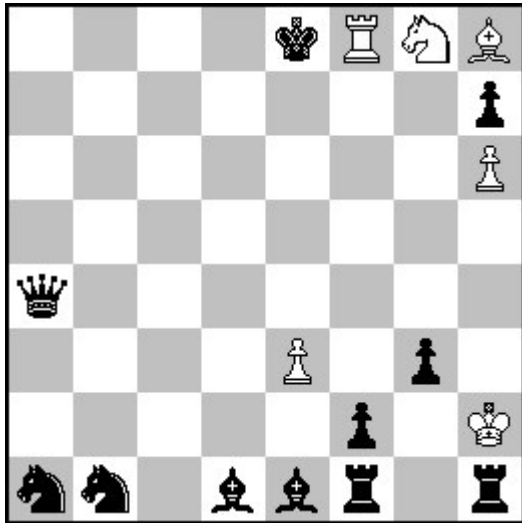
[G.Weeth has shown the ep.-idea in another different matrix in Julias Fairies, Sept. 2018, no.1322.2, however the special thematical try shown here is a novelty.]

**Entry for WCCI 2016-18 and FIDE Album 2016-18, section H (retros)**

Author: K.Wenda, Rasumofskyg.28, 1030 Vienna, Austria Email kreuzschach@a1.net

Klaus Wenda(Austria) entry no.2

-7 & s#1 KLAN Anticirce



White: Kh2 Tf8 Lh8 Sg8 e3 h6 (6)

Black: Ke8 Da4 Tf1 Th1 Ld1 Le1 Sa1 Sb1 f2 g3 h7 (11)

T.Brand zum 60.GebT gewidmet

Die Schwalbe 291/2018, no. 17485

Abbreviations in German: K,D,T,L,S,B

1.Kg1-h2! f3-f2+ 2.Lc3-h8! Kh8:Dg7(Ke8)+  
3.Kf2-g1 g4-g3+ 4.Tb8-f8 Ld2-e1+  
5.Ke1-f2 Lc1-d2+ 6.Kd2:Tc2(Ke1) La3,b2-c1+  
(the Queen's line a4-d1 must be closed)  
7.Sf6-g8 & fw. 1.K:d1(Ke1)+ K:g7(Ke8)#

...6.Kd2:Bc2/Sc2(Ke1)? La3,b2-c1+ 7.Sf6-g8  
& fw. 1.K:d1(Ke1)+ K:g7(Ke8)+ 2.Kd2! [Tc2  
guards d2]

Switching the moves 1.Lc3-h8? Kg7:Dh8(Ke8)+  
2.Kg1-h2 f3-f2+ 3.Kf2-g1 etc. is defeated by  
1...Tg1-h1+! 2.?. W has to provoke a double check.  
Without black Da4 White could move successfully ...5.Ke1-f2 Lc1-d2+ 6.Sf6-g8  
& fw. 1.K:d1(Ke1)+ K:g7(Ke8)#

Entry for WCCI 2016-18 and FIDE Album 2016-18  
Section H (retros)

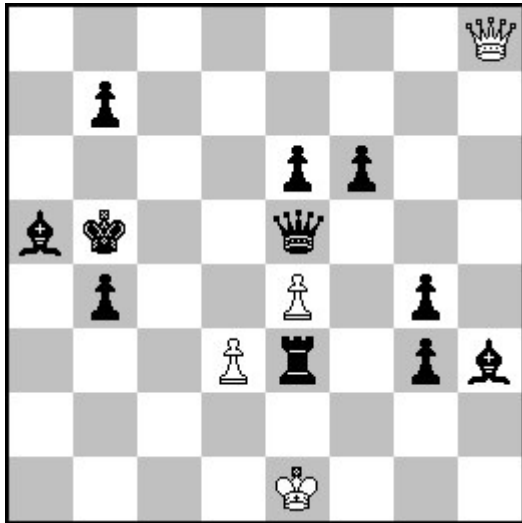
Author:

K.Wenda, Rasumofskyg.28, 1030 Vienna, Austria

Email kreuzschach@a1.net

Klaus Wenda (Austria) entry no.3

-6 & s#1 Hoeg Anticirce Calvet



White: Ke1 Dh8 d3 e4 (4)

Black: Kb5 De5 Te3 La5 Lh3 b4 b7 e6 f6 g3 g4 (11)

Macedonian Probl.49/2016 no.1935v (1.) price, judge Hans Gruber

Abbreviations in German: K,D,T,L,S

The main-plan 1.Kc7:Dd8(Ke1)? Df8:Dd8(Dd8)+ 2.Dd6-d8

& 1.De8+?? D:e8(Dd8)# fails, while the Queen's line h8-e8 is closed by Df8.

When White makes a critical key-move 1.Da8-h8 Tf3-e3+ black Te3 is losing the control over e1 and wK has got a flight (Antizielelement). In an interim-plan W has to prepare a new guarding of e1 to avoid 2.Kc7:Dd8(Ke1)? Df8:Dd8(Dd8)+ 3.Dd6-d8 & fw. 1.De8+? D:e8(Dd8)+ 2.K:d8/K:b7(Ke1)!

Solution: 1.Da8-h8! Tf3-e3+ 2.Kf1:Se1(Ke1)! [no other unit than a S can be uncaptured legally] Sg2-e1+ 3.Db8-a8 Te3-f3+ 4.Ke1-f1 Tf3-e3+ and now 5.Kc7:Dd8(Ke1)[only a Queen can abolish the self-check] Df8:Dd8(Dd8)+ 6.Dd6-d8 & fw. 1.De8+ D:e8(Dd8)#

Theme:

2 Hoeg-uncaptures by wK. Black is forced to determine a certain piece (S/D) to ensure a legal move.

Type Calvet to allow wKf1:Se1(Ke1) & bDf8:Dd8(Dd8)

Entry for WCCI 2016-18 and FIDE Album 2016-18

Section H (retros)

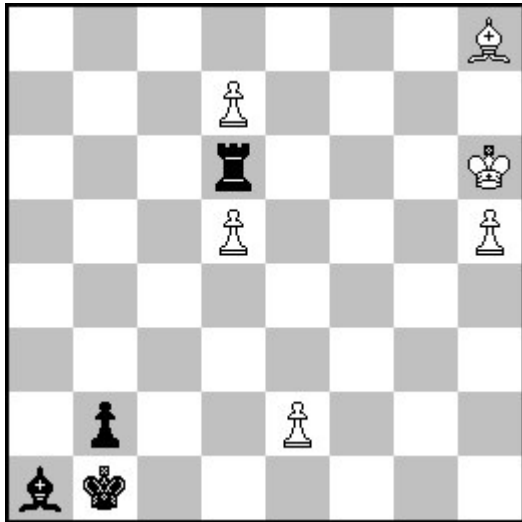
Author:

Klaus Wenda Rasumofskyg.28, 1030 Vienna

Email kreuzschach@a1.net

Klaus Wenda (Austria) entry no.4

-5 & r#1 KLAN Anticirce



White: Kh6 Lh8 d5 d7 e2 h5 (6)

Black: Kb1 Td6 La1 b2 (4)

Abbreviations in German K,D,T,L,S,B

feenschach 221/2016 p.551,no.11272v

1.f5:e6ep(e2)! e7-e5 2.Le5-h8 f7:Se6(Be7)+  
3.Sg5-e6 e7:Sf6(Bf7)+ 4.Sh7-f6 f7:Te6(Be7)+  
5.Tf6-e6 & fw. 1.L:b2(Lc1) L:f6(Lf8)#

Black is forced to uncapture 3 w units (S,S,T)  
which White can use for his aims.

The try to determine wD instead of wT in B4 as object of uncapture is defeated by a  
forward defense typical for reflexmates:

...4.Sh7-f6 f7:De6(Be7)+?  
& 1.Kc1! D:d6(Dd1)# FD.

Entry for WCCI 2016-18 and FIDE-Album 2016-18  
section H (retros)

Author:

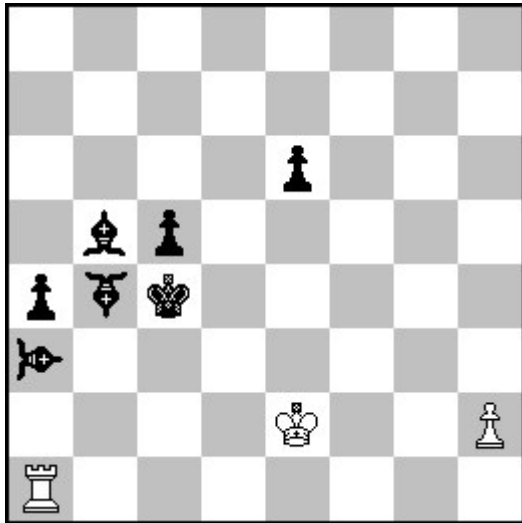
Klaus Wenda, Rasumofskygasse 28, 1030 Vienna

Austria

Email: kreuzschach@a1.net

Klaus Wenda (Austria) entry no.5

-11 & #1 Anticirce Proca Calvet



White: Ke2 Ta1 h2 (3) Black: Kc4 Lb5 a4 c5 e6 Vao a3 Bishophopper b4 (7)

feenschach 232/2018, no.11966

Abbreviations in German K,D,T,L,S,B,VA,LH

1.Tf3:Tf2(Ta1)! Tf1-f2+ 2.Ke1-e2 Tf2-f1+ 3.Kd2:LHc1(Ke1) Tf1-f2+ 4.Ke1-d2 Tf2-f1+  
5.Kd7:VAe8(Ke1) La6-b5+[c6-c5+?] 6.g5:h6ep(h2) h7-h5 [now a draw pendulum starts]  
7.Kc8-d7 Lb5-a6+ 8.Kd7-c8 La6-b5+ 9.Kc8-d7 Lb5-a6+ 10.Kd7-c8 c6-c5+ (forced)  
11.Kd6-d7 & fw. 1.Kc5#

Thematic contents:

Selection of uncaptures VA/LH on e8/c1.

White must uncapture in W3 just on c1 in order to avoid that c5 is guarded by bVAa3.

On e8 no other unit than a bVA may be uncaptured without any disadvantage for White.

...5.Kd7:Se8?(Ke1) La6-b5+...11.Kd6-d7? = illegal doublecheck by VA+S

...5.Kd7:LHe8(Ke1)? LHc6-e8+

On c1 no other unit than a bLH may be uncaptured ...3.Kd2:VAc1(Ke1)? 4.Ke1-d2 Tf2-f1+  
5.Kd7:VAe8(Ke1) VAh1,g2:Xc6(VAc1)+!

Type Calvet to grant a check on c8 by La6.

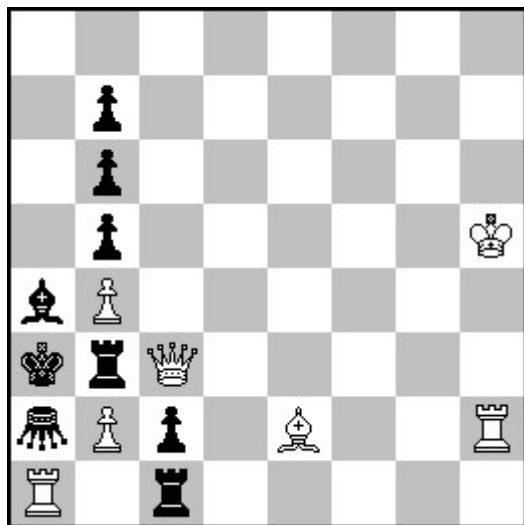
Entry for WCCI 2016-18 & FIDE Album 2016-18  
Section H (retros)

Author:

Klaus Wenda Rasumofskyg. 28 1030 Vienna, Austria  
Email kreuzschach@a1.net

Klaus Wenda (Austria) entry no.6

-4 & #1 Proca Anticirce



White: Kh5 Dc3 Ta1 Th2 Le2 b2 b4 (7)

Black: Ka3 Tb3 Tc1 La4 b5 b6 b7 c2 grasshopper a2 (9)

Die Schwalbe 294/2018, no.13827v

Abbreviations in German: K,D,T,L,S,B,G

1.Td1:Gd4(Ta1)! Zugzwang Ta1-c1  
2.Tc1-d1! Tb1-a1 3.Lf1-e2! Ta1-b1! [forced]  
4.f7:Ge8=L(Lf1) & fw. 1.f8=G#  
...3.Th1-h2? G~-a2 4.Ta1:xa2(Th1)+!

1....Tb1-c1 2.Tc1-d1 Ta1-b1 3.Th1-h2! Tb1-a1 [forced] 4.f7:Ge8=T(Th1) & fw 1.f8=G#  
...3.Lf1-e2? G~-a2 4.Lb1:xa2+!

1.Td1:Gd4(Ta1) Ta1-c1 2.Th1-h2? Tb1,c1-a1  
3.f7:Ge8=T(Th1) & 1.f8=G+ T:b4(Th8)+!

1.Td1:Gd4(Ta1) Tb1-c1 2.Lf1-e2? Ta1,c1-b1  
3.f7:Ge8=L(Lf1) & fw. 1.f8=G+ T:b4(Th8)+!  
[the key unpinning Tb3 contains an Antizielelement]  
The tries: 1.Td1:Gd2,Gg1(Ta1)? Gf2,g2-d2/g2-g1=G!  
1.Td1:Gd6,Gd8(Ta1)? are disturbing the forward play.

The previous version published in  
Die Schwalbe H. 232/2008 Nr 13827, 2.price  
(=PDB P1070014) was incorrect and disqualified in the Album tourney.

Entry for WCCI 2016-18 and FIDE Album 2016-18 Section H (retros)

Klaus Wenda Rasumofskyg. 28, 1030 Vienna, Austria Email: kreuzschach@ a1.net

