

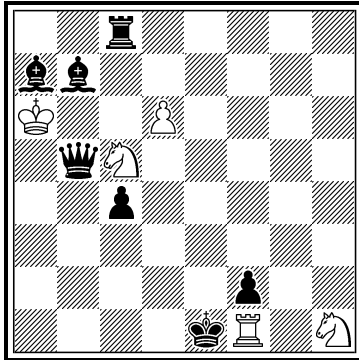
1

Rolf Kohring

Die Schwalbe 2016

279

Comendation



hs#2 C+ (5+7)

Mars circe

b) ♖d6 →e6

1) Rolf Kohring:

a) 1. Sb3 (S bel?) cxd6 2. Rg1+ Rc1# (3. Qb1!)

b) 1. Se4 (S bel.?) fxe6 2. Sg3+ Bg1# (3. Bh1!)

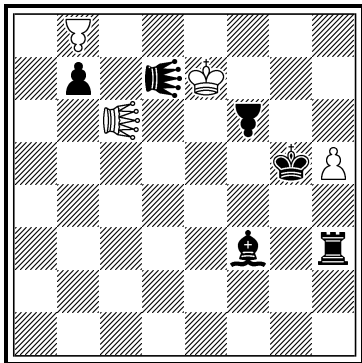
Masked line opening of the black rook / black bishop by the white knight with simultaneous line interference of the black queen / black bishop (bivalve); complete line opening of the black rook / black bishop with the capture of the white pawn by the black pawn; defense of the white chess by interference of the mate line by firing the black rook - bishop / bishop - rook battery.

2

Rolf Kohring

harmonie-aktiv 2016

130



h#2 C+ (4+6)

Anti mars circe

2.1.1.1

♁♁ = Eagle

♂♂ = Sparrow

2) Rolf Kohring:

1. EAg2 SWc8 2. Bxh5 EAxh3#

1. SWg3 EAa8 2. Rxh5 SWxf3#

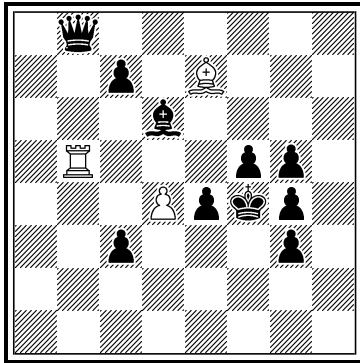
Creation of a black hurdle for the mate move by the jump of the black eagle / black sparrow over the black bishop / black rook which will be a hurdle itself by capturing the white pawn; occupation of the rebirth field of the black rook / black bishop by the white eagle / white sparrow to prevent the removal of the black hurdle in the mate move; functional exchange between the white eagle and white sparrow as well as black rook and black bishop.

3

Rolf Kohring

Die Schwalbe 2017

286



h#3 C+ (3+10)

Mirror anticirce

0.2.1.1.1.1

3) Rolf Kohring:

1. ... Rxf5 [wRf5→a8] 2. Bxe7 [sBe7→c1] Rxb8 [wRb8→h8] 3. Be3 Rf8#
(2. ... Ra6? 3. Be3 Rf6# but 4. Qh8!)

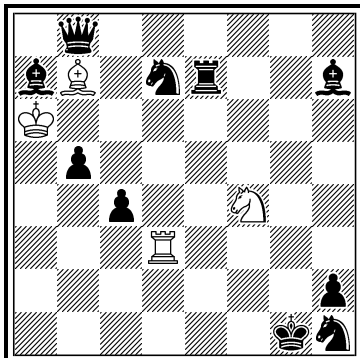
1. ... Bxg5 [wBg5→f8] 2. Qxb5 [sQb5→d1] Bxd6 [wBd6→f8] 3. Qf3 Bh6#
(2. ... Bg7? 3. Qf3 Bh6# but 4. Bf8!)

Zilahi; Chumakov theme (the figure captured in one phase actively blocks in the other phase); capture of the black pawn by the white mating figure to the prospective line opening for the mate move; dual avoidance in the 2nd white move; orthogonal / diagonal solution; model mate.

4

Rolf Kohring

Problemlad 2018 3



hs#2 C+ (4+10)

Mars circe

2.1.1.1

4) Rolf Kohring:

1. Se2 Re4 2. Ra3+ Bxa3#

1. Sg6 Se5 2. Rd4+ Qxd4#

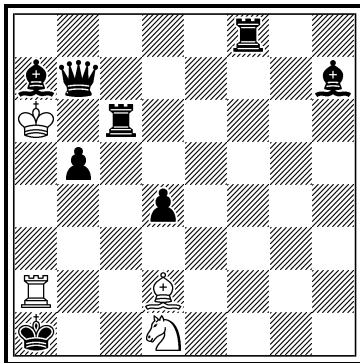
Interference of a black line by the white knight; creation of a black bishop - rook / queen - knight battery by interference of another black line by the black rook / black knight while opening a black line; this allows black to capture the white checking rook by firing the black battery.

5

Rolf Kohring

Die Schwalbe 2018

292



hs#2 C+ (4+8)

Mars circe

2.1.1.1

5) Rolf Kohring:

1. Bf4 d3 2. Sc3+ Bg1#

1. Bg5 Rg6 2. Sf2+ Qh1#

Interference of a black line; opening of a black line with simultaneous interference of a black line; firing of the white battery with interference of a black line, this forces black to interfere the 1st line whereas the black battery is fired.