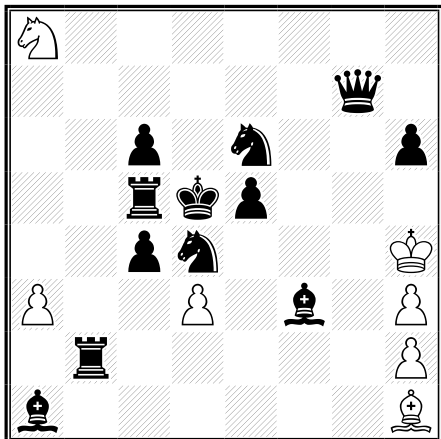


1) Arno Tüngler
Am Steinfels
D-65618 Selters
Germany atungler@yahoo.com
C0672 StrateGems October-December 2018

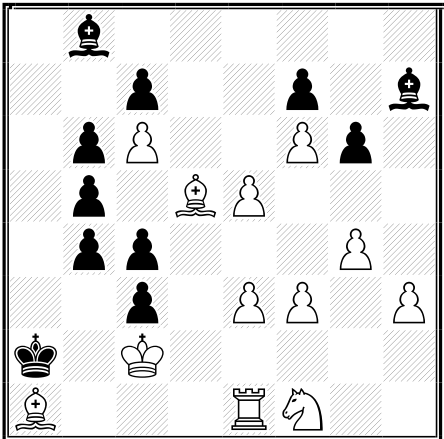


Series-mate in 78 moves (7+12) C+

1.Bh1-g2 11.Be8-g6 12.Kh4-g3 14.h4-h5 15.h2-h4
16.Kg3-h3 26.Bf1-g2 30.Kf1-e1 34.Bd1-c2 36.Kd2-c3 37.Bc2-b3
39.Kb4-a4 50.Ba6-b5 52.Ka5-a6 63.Bc8-b7 66.Kb8-c8 76.Bg6-f7
77.Kc8-d7 78.Sa8-c7 #

Longest capture-free series-mate, 40 moves longer than the earlier record
(see [PDB/P1340049](https://pdb.pw.org/P1340049)). Pin-mate.

2) Arno Tüngler
 Am Steinfels
 D-65618 Selters
 Germany atungler@yahoo.com
 1st Place 8th TT I.Faybish 2016



Series-helpmate in 130 moves (12+11) C+
 Vertical Mirror Circe

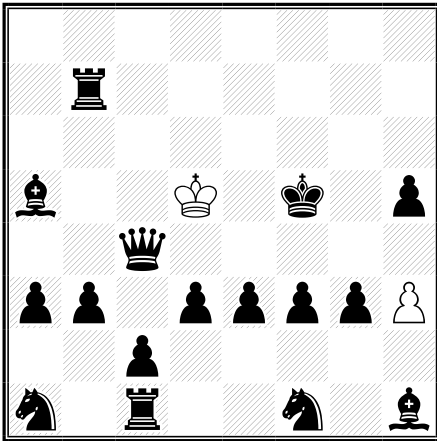
1.Ka2-a3 6.Ka7-a8 7.Bb8-a7 14.Kg8-h8 15.Bh7-g8 20.Kh4×h3[+wPa2] 25.Kh7-h8 26.Bg8-h7
 33.Kb8-a8 34.Ba7-b8 40.Ka3×a2[+wPh2] 46.Ka7-a8 47.Bb8-a7 54.Kg8-h8 55.Bh7-g8
 63.Kf2×e1[+wRh1] 71.Kh7-h8 72.Bg8-h7 79.Kb8-a8 80.Ba7-b8 87.Ka2×a1 94.Ka7-a8 95.Bb8-a7
 102.Kg8-h8 103.Bh7-g8 110.Kg2×f1[+wSg1] 112.Kg2×h1[+wRa1] 113.Kh1×h2[+wPa2]
 119.Kh7-h8 120.Bg8-h7 127.Kb8-a8 128.Ba7-b8 129.Ka8-a7 130.b4-b3 + a2×b3[+bPg7] #

The black king visits all 4 corners in this logical seriesmover. The wPh3 switches three times sides before mating.

Definition:

Vertical Mirror Circe is the same as Circe, except that the rebirth square is on the vertical mirror from the usual place.

3) Arno Tüngler
 Am Steinfels
 D-65618 Selters
 Germany atungler@yahoo.com
 LB-3 Chessproblems.ca Bulletin Dec. 2016
 2nd Prize



Series win-a-piece in 45 moves (2+16) C+
 (ser-%45)
 Circe

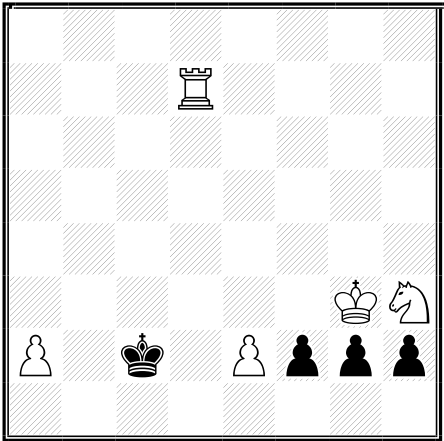
1.Kd5×c4[Qd8] 4.Kc6×b7[Ra8] 8.Ka4×a3[Pa7] 10.Kb2×c1[Rh8] 12.Kb2×a1[Sb8]
 14.Kb2×b3[Pb7] 16.Kc4×d3[Pd7] 17.Kd3×c2[Pc7] 20.Ka4×a5[Bf8] 26.Ke1×f1[Sg8]
 28.Kg1×h1[Bc8] 35.Kd3×e3[Pe7] 36.Ke3×f3[Pf7] 37.Kf3×g3[Pg7]
 39.Kh4×h5[Ph7] 41.Kh4-g3 45.h6×g7 %

All 15 black units (besides the king) are captured reborn before finally the g-pawn is captured the second time and White thus wins a piece. The order of captures needs to be chosen carefully so that the king is not trapped.

Definition:

Series-win-a-piece in n moves (ser-%n) – White plays a series of n moves so that Black remains with one piece less than in the diagram position.

4) Arno Tüngler
Am Steinfels
D-65618 Selters
Germany atungler@yahoo.com
11624 feenschach July-August 2017



Parry series-helpmate in 5 moves (5+4)
pser-h#5

1.g1=Q+ Kf3! (Sxg1? would be premature) 2.h1=Q+ Ke3 3.f1=Q! Sxg1
4.Qxe2+ Sxe2 5.Qb1 Rd2#

Three consecutive black queen promotions (Oudut theme) in only 5 moves.
The first promoted queen is captured while not moving what is impossible in orthodox helpmates or series-helpmates.

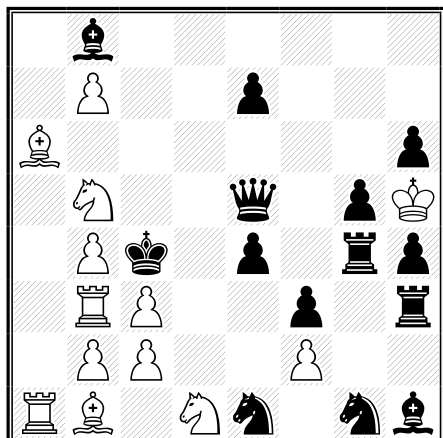
Definition:

A parry series-mover differs from a normal series-mover, prior to the last move, as follows:

- the series-side may give check during the series.
- when checked, the idle-side must immediately parry the threat.
- a parry-move may be helpful or defensive, depending on the genre.
- after a check-and-parry, the series-side continues the series.

In a parry series-helpmate all parries are helpful.

5) Arno Tüngler
 Am Steinfels
 D-65618 Selters
 Germany atungler@yahoo.com
 T-306 Chessproblems.ca Bulletin Dec. 2016



Series-target square g3 in 162 moves (13+14) C+
 (ser-Zg3 162)

Vertical Mirror Circe

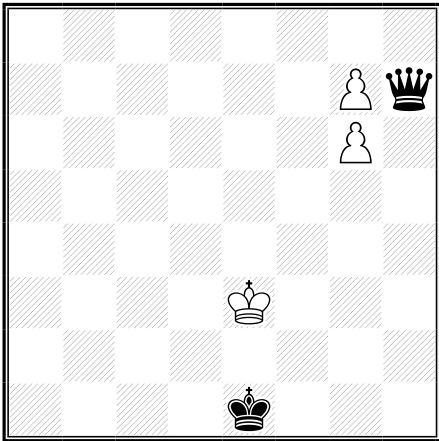
1.Kh5-g6! (Immediate capture and rebirth of the bRg4 leads to full block of the 8th row)
 10.Ka3-a2 12.Ra3-a5 14.Ka3-a4 16.Ra3-b3 19.Ka2-a1 20.Bb1-a2 24.Kd2×e1(Sg8) 28.Kb1-a1
 29.Ba2-b1 32.Ka3-a4 34.Ra3-a1 36.Ka3-a2 38.Ra3-b3 49.Kh5×g4(Rh8)
 60.Ka3-a2 62.Ra3-a5 64.Ka3-a4 66.Ra3-b3 69.Ka2-a1 70.Bb1-a2 76.Kf1×g1 82.Kb1-a1
 83.Ba2-b1 86.Ka3-a4 88.Ra3-a1 90.Ka3-a2 92.Ra3-b3 104.Kg4×h3 116.Ka3-a2 118.Ra3-a5
 120.Ka3-a4 122.Ra3-b3 125.Ka2-a1 126.Bb1-a2 133.Kg1×h1(Bf8) 140.Kb1-a1 141.Ba2-b1
 144.Ka3-a4 146.Ra3-a1 148.Ka3-a2 150.Ra3-b3 158.Ke8×f8(Bc8)
 and finally the b-pawn can move:
 159.b7×c8=S 160.Sc8×e7[Pd7] 162.Sf5-g3 Z

Longest Series-target square with the condition Vertical Mirror Circe and with normal force as the two white bishops change the square color each time when they are captured. Specific use of an amended Zeller-trap in conjunction with the bishop pendulum.

Definition:

Vertical Mirror Circe is the same as Circe, except that the rebirth square is on the vertical mirror from the usual place.

6) Arno Tüngler (after Günter Glaß)
 Am Steinfels
 D-65618 Selters
 Germany atungler@yahoo.com
 LB-2 Chessproblems.ca Bulletin Dec. 2016



Series-selfmate in 6 moves (3+2) C+
 (ser-s#6)
 Vertical Mirror Circe
 2 solutions

- i) 1.g7-g8=S 2.Sg8-f6 3.Sf6-e4 4.g6×h7[Qe8] 5.h7-h8=R 6.Rh8-h1+ Qe8×e4[Sg1] #
- ii) 1.g7-g8=B 2.Bg8-d5 3.Bd5-e4 4.g6×h7[Qe8] 5.h7-h8=Q 6.Qh8-a1+ Qe8×e4[Bc1] #

Allumwandlung by the two white pawns with minimal force and specific mate.
 The famous problem of Günter Glaß (see [PDB/P1111610](https://pdb.org/P1111610))
 has the “beauty spot” on f6 that is here avoided with the condition VMC instead of Circe.

Definition:
*Vertical Mirror Circe is the same as Circe,
 except that the rebirth square is on the
 vertical mirror from the usual place.*