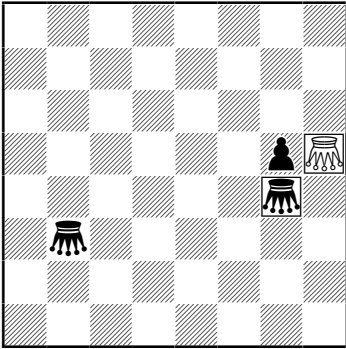


1. Ivan Skoba
7772 Phenix 268/2016



h#5* (1 + 3)

C+ B: Mirror a1↔a8
Madrasi RexInclusiv

Fairy pieces: Royal Grashopper , 

A)

1.- rGf5 2.rGe6 rGd7 3.Gf7 rGg7 4.rGg8 rGe7 5.rGg4 rGg7 #
1.rGg6 rGf7 2.g4 rGa2 3.rGg3 rGc4 4.Gd5 rGe6 5.Gf7 rGg8 #

B) Mirror a1↔a8

1.- rGf6 2.g3 rGa6 3.rGg2 rGc6 4.Gd6 rGe6 5.Gf6 rGg6 #
1.g3 rGf6 2.g2 rGa6 3.rGg1 rGc6 4.Gd6 rGe6 5.Gf6 rGg6 #

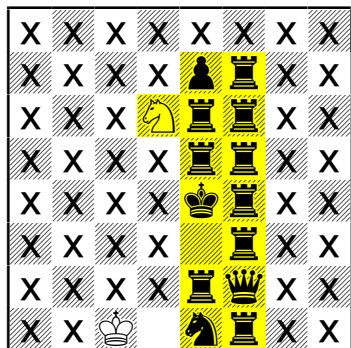
Fourfold echo. Mating position isn't original, it was used earlier in [Kotěšovec JT 50](#).

Additionally (not used in this entry) – diagram has two solutions with stipulation hs#6:

1.rGf3 rGg6 2.rGa3 g4 3.rGc3 g3 4.rGa3 g2 5.rGc3 rGg1 6.rGa3 rGg3 #
1.rGf5 rGe6 2.rGd7 Gf7 3.rGg7 g4 4.rGe7 rGe8 5.rGg7 g3 6.rGg2 rGg6 #

All entries were tested by Popeye (C+).

2. Ivan Skoba
 (dedicated to V. Kotěšovec *61)
 7. HM. T350 cpb-12/2017



ser-h#61 (2+13)

C+ X = Hole

In the case of black Be7 (instead of Pe7), the solution would be evident:

1. ♔e4-e3 2. ♖f4-e4 3. ♔e3-f4 4. ♖e4-e3 5. ♖e5-e4 6. ♔f4-e5 7. ♖f5-f4 8. ♖f6-f5 9. ♕e7-f6 ♘d6xf7 #

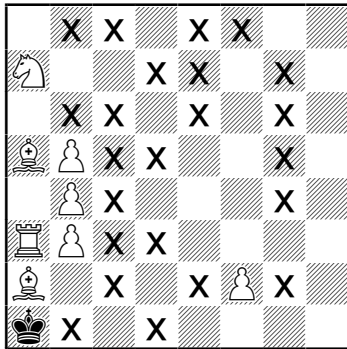
In the real solution is pawn e7 promoted to bishop and then it returns to square e7...

1.Ke4-e3 2.Re5-e4 3.Re6-e5 4.e7-e6 5.Rf7-e7 6.Rf6-f7 7.Rf5-f6 8.Re5-f5 9.e6-e5 10.Rf6-e6 11.Rf5-f6
 12.Rf4-f5 13.Re4-f4 14.e5-e4 15.Rf5-e5 16.Rf4-f5 17.Rf3-f4 18.Qf2-f3 19.Re2-f2 20.Ke3-e2 21.e4-e3
 22.Qf3-e4 23.Rf2-f3 24.Rf1-f2 25.Ke2-f1 26.e3-e2 27.Rf3-e3 28.Se1-f3 29.e2-e1=B 30.Rf2-e2 31.Be1-f2
 32.Sf3-e1 33.Re3-f3 34.Bf2-e3 35.Re2-f2 36.Kf1-e2 37.Rf2-f1 38.Rf3-f2 39.Rf4-f3 40.Be3-f4 41.Ke2-e3
 42.Rf2-e2 43.Rf3-f2 44.Qe4-f3 45.Re5-e4 46.Bf4-e5 47.Rf5-f4 48.Rf6-f5 49.Be5-f6 50.Re6-e5 51.Re7-e6
 52.Bf6-e7 53.Rf5-f6 54.Rf4-f5 55.Ke3-f4 56.Re4-e3 57.Re5-e4 58.Kf4-e5 59.Rf5-f4 60.Rf6-f5 61.Be7-f6
 Sd6*f7 #

The requirement of legality isn't necessary, but about last white move (how the initial position is possible?) we can remove, for instance, hole from square b7 (but not from c8 due to short solution 1.Ke4-e3 2.Rf4-e4 3.Ke3-f4 4.Re4-e3 5.Re5-e4 6.Kf4-e5 7.Rf5-f4 8.Rf6-f5 9.Ke5-f6 10.Re6-e5 11.e7-e6 12.Kf6-e7 13.Rf5-f6 Sd6-c8 #).

Symbolic problem ("Number one").

4. Ivan Skoba
3053 Variantim 73/2017

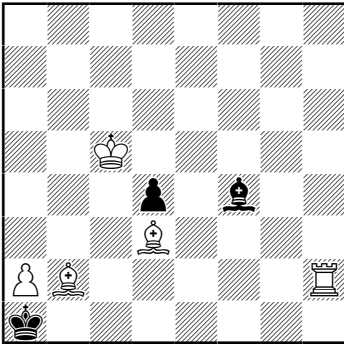


h#50 (8+1)

C+ X = Hole
WhiteToPlay
NoWk

1...Ra3-a4 2.Ka1-b2 Ra4-a3 3.Kb2-c1 Ra3-a4 4.Kc1-d2 Ra4-a3 5.Kd2-e1 Ra3-a4 6.Ke1-f1 Ra4-a3
7.Kf1-g1 Ra3-a4 8.Kg1-h2 Ra4-a3 9.Kh2-h3 Ra3-a4 10.Kh3-h4 Ra4-a3 11.Kh4-h5 Ra3-a4 12.Kh5-h6 Ra4-a3
13.Kh6-h7 Ra3-a4 14.Kh7-g8 Ra4-a3 15.Kg8-f7 Ra3-a4 16.Kf7-f6 Ra4-a3 17.Kf6-e5 Ra3-a4 18.Ke5-d6 Ra4-a3
19.Kd6-c7 Ra3-a4 20.Kc7-b7 Ra4-a3 21.Kb7*a7 Ra3-a4 22.Ka7-b7 Ra4-a3 23.Kb7-c7 Ra3-a4
24.Kc7-d6 Ra4-a3 25.Kd6-e5 Ra3-a4 26.Ke5-f6 Ra4-a3 27.Kf6-f7 Ra3-a4 28.Kf7-g8 Ra4-a3 29.Kg8-h7 Ra3-a4
30.Kh7-h6 Ra4-a3 31.Kh6-h5 Ra3-a4 32.Kh5-h4 Ra4-a3 33.Kh4-h3 Ra3-a4 34.Kh3-h2 Ra4-a3
35.Kh2-g1 Ra3-a4 36.Kg1-f1 Ra4-a3 37.Kf1-e1 Ra3-a4 38.Ke1-d2 Ra4-a3 39.Kd2-c1 Ra3-a4
40.Kc1-b2 Ra4-a3 41.Kb2*a3 f2-f3 42.Ka3*a2 f3-f4 43.Ka2*b3 f4-f5 44.Kb3-a4 f5-f6 45.Ka4*b5 f6-f7
46.Kb5-a6 b4-b5 + 47.Ka6-a7 Ba5-b4 48.Ka7-b7 Bb4-a3 49.Kb7-c7 Ba3-c1 50.Kc7-d6 Bc1-f4 #

5. Ivan Skoba
7739 cpb-12/2017



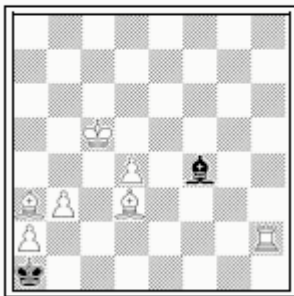
ser-h=15 (5+3)
C+ Circe Volcanic

On d4 can stay also white Pawn.

1.Ka1*a2[+wPa2->v] 2.Bf4-c1 3.Bc1*b2[+wBc1] 4.Ka2-a1[+wPa2] 5.Bb2*c1[+wBc1->v] 6.Bc1-f4[+wBc1]
7.Bf4*h2[+wRa1->v] 8.Bh2-f4 9.Bf4*c1[+wBc1->v] 10.Ka1-b2[+wRa1] 11.Kb2-c3 12.Kc3-d2 13.Kd2-d1
14.Bc1-b2[+wBc1] 15.Bb2*a1[+wRa1->v] Bc1-d2=

Version by judge:

3rd Honourable Mention:
T339(v)
Ivan Skoba
Version by judge
ChessProblems.ca Bulletin
2017

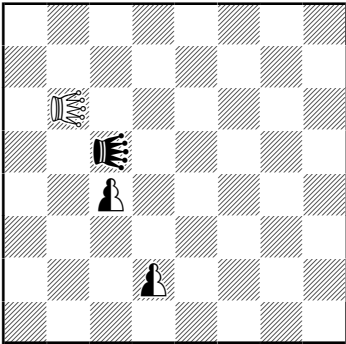


ser-h= 17 C+ (7+2)
Circe Volcanic

1.Bf4-c1 2.Bc1-b2 3.Ka1×a2[+wPa2!v] 4.Ka2×a3[+wBc1][+wPa2] 5.Ka3×a2[+wPa2!v] 6.Ka2-a1[+wPa2]
7.Bb2×c1[+wBc1!v] 8.Bc1-f4[+wBc1] 9.Bf4×h2[+wRa1!v] 10.Bh2-f4 11.Bf4×c1[+wBc1!v] 12.Ka1-
b2[+wRa1] 13.Kb2-c3 14.Kc3-d2 15.Kd2-d1 16.Bc1-b2[+wBc1] 17.Bb2×a1[+wRa1!v] Bc1-d2 =

A remarkable series with extensive use of the fairy condition and very good logic. WPa2 is needed to prevent a short cook (1.Ka2 2.Kb3 3.B×h2[+wRa1] 4.Bf4 5.Bc1 6.K×b2[+wBc1!v] Ra1-a3 =). A version starting with WB on a3 and additional minor changes overcomes the BK-in-check in the original version (Paz Einat, judge).

6. Ivan Skoba
1348 Julia's Fairies 26. 11. 2018



ser-#6 (1+1+2)

C+ Madrasi

B: Shift a1→b1, ser-=6

Fairy pieces: royal rose-lion b6, royal rose-lion c5

Popeye Windows-32Bit v4.65 (1024 MB)

A)

1.rRNb6-b2 2.rRNb2-e5 3.rRNe5-a5 4.rRNa5-g5 5.nPd2-d4 6.rRNg5-c1 #

B) shift a1→b1, ser-=6

1.rRnc6-f3 2.rRNf3-b3 3.rRNb3-e6 4.rRNe6-a2 5.rRNa2-g2 6.nPe2-e4 =

3 Responses to No.1348 (IS)



luce December 10, 2018 at 00:59

cook in b) on Winchloe 2 solutions

b)

1.ROLRa1 2.ROLRg1 3.ROLRxd4 4.ROLRg1 5.ROLRg7 6.ROLRxe2=

1.ROLRf3 2.ROLRb3 3.ROLRe6 4.ROLRa2 5.ROLRg2 6.e4=



December 10, 2018 at 08:00

/oost

The difference between Popeye and Winchloe: In winchloe the rose-lion can capture its hurdle.



December 10, 2018 at 08:06

/oost

The theme can of course be shown in a trivial matter without twins:

W: rRNb4

B: rRNd5

N: Pd4e2

Madrasi

(a) ser-#2 (b) ser-=2