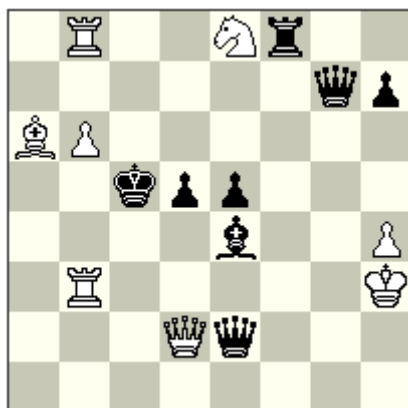


No.1

Julia Vysotska
P.A.Petkov 75 JT, StrateGems 2017
1st Prize



hs#2.5 2 solutions 8+8

Anti-Andernach
Eiffel Chess

1...Be4-f3=w (1...Qe2-h2=w?) **2.Rb3-c3=b Qe2-h2=w !!** (otherwise 4.Ba6×Qe2 paralyzes Rf3!)
3.Qd2×c3 + Rf8×f3 # (paralyzes Qc3 and mates wK)

1...Rf8-f5=w (1... Qg7-g3=w?) **2.Ba6-c8=b Qg7-g3=w !!** (otherwise 4.Se8×Qg7 paralyzes Bf5!)
3.Rb8×c8 + Be4×f5 # (paralyzes Rc8 and mates wK)

(C+ by Popeye)

Paralyzing of WQ and WR and preventing paralyzing of BR and BB.

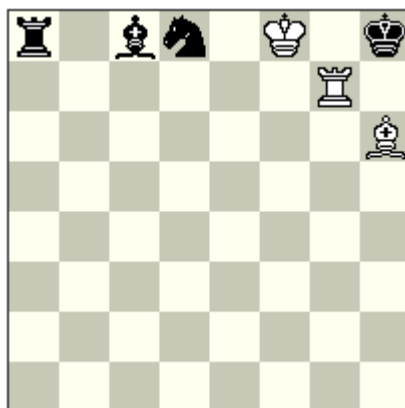
Two pairs of pieces go to the same square twice in both solutions. ODT.

The second black move Qh2/Qg3 is an anticipatory prevention of white's possible defense: capturing of the black Qe2/Qg7 by white Ba6/Se8 to paralyze mating piece Rf3/Bf5.

The judge, Petko A. Petkov: "This is a unique task with very rich and interesting content! In two solutions four pairs of thematic pieces change their functions reciprocally: Rf8/Be4; Rb3/Ba6; Qd2/Rb8; Qe2/Qg7. Each half-move is strictly thematic: at first, Be4 and Rf8 preliminary close the black lines and follow white moves Rc3(bR) and Bc8(bB) respectively. Very paradoxical and beautiful are the second black moves 2...Qh2(wQ) / 2...Qg3(wQ) that demonstrate white (!) self-blocks and prevent the negative future white defenses 4.Bxe2! (paralyzes Rf3) and 4.Sxg7 (paralyzes Bf5). As finals follow two thematic mates on f3/f5 with paralysis of Qc3/Rc8. A real masterpiece!"

No.2

Julia Vysotska
 P.A.Petkov 75 JT, StrateGems 2017
 4th Prize



hs#2.5 b) +bPh7 3+4

Anti-Andernach
 Eiffel Chess

a) **1...Sd8-e6=w** (anticipatory paralyzing bBg5) **2.Rg7-g3=b Rg3-h3=w**
3.Bh6-g5=b + (bBg5 can't return to the battery line being paralyzed by wSe6) **Bc8×e6 #**

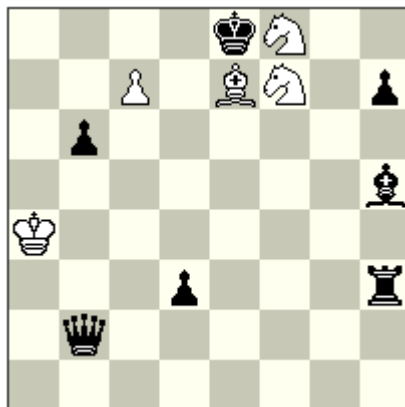
b) **1...Bc8-e6=w** (anticipatory paralyzing bRd7) **2.Bh6-e3=b Be3-d4=w**
3.Rg7-d7=b + (bRd7 can't return to the battery line being paralyzed by wBe6) **Sd8×e6 #**

(C+ by Popeye)

The judge, Petko A. Petkov: "This problem is a true jewel! An amazingly economical and beautiful construction shows a play by the black half-battery and white R/B and B/R batteries with exchange of functions. The rich thematic effects include the specific Zilahi theme."

No.3

Julia Vysotska
 P.A.Petkov 75 JT, StrateGems 2017
 1st Honourable Mention



hs#3 2 solutions 5+7
 Anti-Andernach
 Eiffel Chess

1.Be7-g5=b (becoming paralyzed by wSf7, bBg5 anticipatory paralyzes wRe3) **Bh5-g4=w**
2.Bg4-d7=b (paralyzing by wSf8) **Rh3-e3=w** (paralyzed by bBg5)
3.Sf7×g5 + (unparalyzes wRe3) **Ke8×f8 #** (unparalyzes bBd7)

1.Sf7-d8=b (becoming paralyzed by wPc7, bSd8 anticipatory paralyzes wBf7) **Rh3-h4=w**
2.Rh4-b4=b (paralyzed by wBe7) **Bh5-f7=w** (paralyzed by bBg5)
3.c7×d8=S + (unparalyzes wBf7) **Ke8×e7 #** (unparalyzes bRb4)

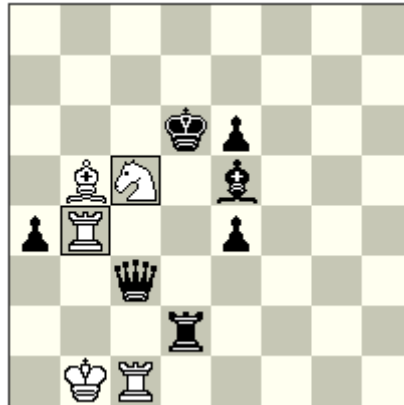
(C+ by Popeye)

3 systems of paralyzing (one is double: paralyzing by paralyzed piece) and 2 unparalyzings (one by bK) in each phase.

The judge, Petko A. Petkov: "The two sides built so-called "ecto batteries" in every solution. In this unusual system of paralysis and spoiling of paralysis a very interesting role is played by the black King who gives mates, functioning as a forward piece of the black ecto – batteries. A wonderful idea implemented in Meredith form. Unfortunately, there is no complete thematic identity; only in the second solution we have white Knight promotion, etc."

No.4

Julia Vysotska
 14th Romanian Tzuica Tourney - 2016, Fairy section
 2nd Commendation [version]



hs#3 b) cSc5-->a3 5+7
 Anti-Andernach
 Chameleon Sc5
 Chameleon Rb4

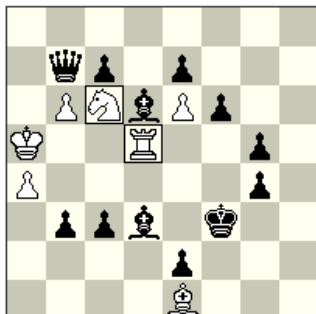
a) 1.cRb4-c4=cQ=b cQc4-b3=cS=w 2.cSb3-a5=cB=b Qc3-b4=w
 3.cSc5*e4=cB + cBa5*b4=cR #

b) 1.cSa3-c4=cB=b cBc4-f1=cR=w 2.cRf1-f3=cQ=b Qc3-a3=w
 3.cRb4*e4=cQ + cQf3*a3=cS #

(C+ by Popeye)

Rundlauf of two Chameleons (S, R) in two different phases. Two moves on the same squares. Meredith. This version is much more economical than originally published:

Julia Vysotska
 14th Romanian Tzuica Tourney - 2016, Fairy section
 2nd Commendation



hs#3 b) cSc6-->e4 7+12
 Anti-Andernach
 Chameleon d5
 Chameleon c6

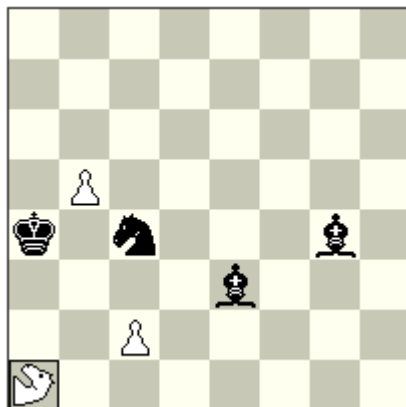
a) 1.cSc6-a7=cB=b cBa7-b8=cR=w 2.cRb8-e8=cQ=b Qb7-c6=w
 3.cRd5×g5=cQ + cQe8×c6=cS #

b) 1.cRd5-d4=cQ=b cQd4-e3=cS=w 2.cSe3-c4=cB=b Qb7-d5=w
 3.cSe4×g5=cB + cBc4×d5=cR #

The judges, Vlaicu Crişan & Eric Huber: "This is the shortest presentation of the theme in the whole tourney (3 moves only for the 4-move Rundlauf!), using a piece that changes color thanks to the AntiAndernach condition and also thanks to the chameleonic properties. The major difficulty in this kind of problems is to ensure that the chameleon circuit is unique, which unfortunately requires much material. We liked very much the creation of the white battery during the play."

No.5

Julia Vysotska
 Krassimir Gandev 70JT, KobulChess 2016
 Special Prize



h#3 b) a1->f6 3+4
 Hurdle Colour Changing Nightrider-Lion a1

a) **1.Be3-c5 hccNL**a1-d7[c5=w] **2.Bg4-f3 hccNL**d7-g1[f3=w] **3.Sc4-a5 Bf3-e2 #**

b) **1.Bg4-d7 hccNL**f6-b8[d7=w] **2.Be3-d4 hccNL**b8-e2[d4=w] **3.Sc4-a3 Bd4-c3 #**

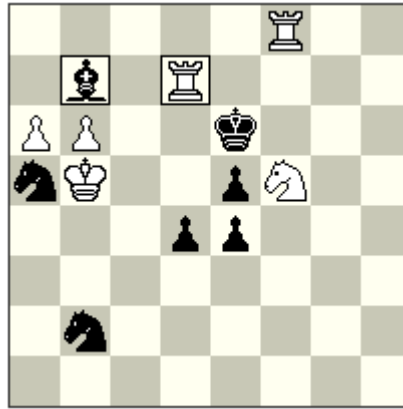
(C+ by Popeye)

Two black Bishops change their functions in escorting the white hccNL. Selfblocks. Model mates. Miniature.

The judge: Krassimir Gandev

No.6

Julia Vysotska
Julia's Fairies – 2018/II, [No.1343](#)
(award not published yet)



hs#3.5 b) +wSb6 6+7
Half Neutral Rook d7
Half Neutral Bishop b7

- a) **1...hRd8=nh! 2.nhRd5=wh Sc6 3.hBc8=nh+ nhBd7=bh 4.hRd6=nh+ nhRd5=bh#**
b) **1...hRc7=nh 2.hBa8=nh! nhRc4=bh 3.nhBc6=wh Sb7 4.hBd5=nh+ nhBc6=bh#**

(C+ by Popeye)

Analogue maneuvers of two half-neutrals of opposite color, each making 4 moves on the same orthogonal/diagonal:

1. "a hesitating color-changing move" to the edge of the board,
2. anti-critical move (again with hesitating character),
- 3-4. check+ switchback mate, with changed roles of selfblock & guard. Two selfblocks by bSa5 changing its guards.

Definitions of Fairy elements used:

Anti-Andernach: A piece (excluding King) changes its color after any non-capturing move. After capture, the piece retains its color. Rooks on a1, h1, a8 and h8 can be used for castling, provided the usual other rules for that move are satisfied. After castling, Rooks do not change color, If White makes a non-capturing move with neutral or halfneutral piece, that piece becomes black and vice versa.

Chameleon: On completing a move, a Chameleon (from classical standard type) changes into another piece, in the sequence Q-S-B-R-Q... Promotion may be to a chameleon at any stage in the cycle.

Eiffel Chess: Units, other than Kings, are paralysed when they attack each other in the sequence P-N-B-R-Q-P. A Pawn paralyses an enemy Knight; a Knight paralyses an enemy Bishop, and so on. A paralyzed unit loses all powers except that of causing paralysis. Fairy pieces play normal, without paralysis.

Half-neutral piece: Piece which can exist in black, white or neutral state and changes its state by the rules:

- A piece in the neutral state may be moved by Black or White, and after move it changes into black or white state respectively.
- A piece in the white state may be moved only by White, and after move it changes into its neutral state.
- A piece in the black state may be moved only by Black, and after move it changes into its neutral state.
- Only a half-neutral pawn can promote into half-neutral figure.

Additional features of half-neutral pieces:

- Castling with half-neutral King is possible with hK in white phase on e1 (White castling) and hK in black phase on e8 (Black castling). After castling the hK changes into its neutral state.
- A play is possible also with only one half-neutral King on the board (in white, black or neutral phase).
- By the notation: “h”=half-neutral piece, states are marked with “w”(white), “b”(black) and “n”(neutral).

Hurdle Colour Changing piece: changes the color of the piece it jumps over.

Nightrider-Lion(NL): Moves along *Nightrider* lines (*Nightrider(N): (1,2) Rider. Operates along straight lines with squares lying a Knight's move away from each other.*) over another unit of either color to any square beyond that unit. A capture may be made on arrival, but the hurdle is not affected.