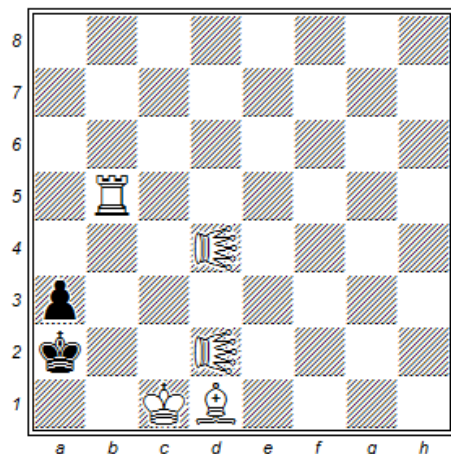


Stephan Dietrich, Heilbronn, Germany

Die Schwalbe, Nr. 16970, Februar 2017

s#9 (5+2), C+ Popeye (4.75)

2x Moose (2x Elch EL = 45°Grashopper) – 2 solutions



Try (Probe) 1.Tb2+? ab2:+ - but 2. Kc2 ! => c2 must be blocked

a) Rundlauf of bishop (d1-c2-d3-e2-d1) as square

1.Ld1-c2 Ka2-a1 2.ELd2-b3 Ka1-a2 3.Lc2-d3 Ka2-a1 4.ELd4-c2 Ka1-a2
 5.Ld3-e2 Ka2-a1 6.Le2-d1 Ka1-a2 7.ELb3-d2 Ka2-a1 8.Tb5-b1+ Ka1-a2
 9.Tb1-b2+ a3xb2#

b) Rundlauf of moose (d2-e5-c4-b1-d2) as parallelogram

1.ELd2-e5 Ka2-a1 2.ELe5-c4 Ka1-a2 3.ELd4-b3 Ka2-a1 4.ELb3-e1 Ka1-a2
 5.ELe1-c2 Ka2-a1 6.ELc4-b1+ Ka1-a2 7.ELb1-d2 Ka2-a1 8.Tb5-b1+ Ka1-a2
 9.Tb1-b2+ a3xb2#

Stephan Dietrich, Rampachertal 40, 74076 Heilbronn, Germany; DietrichSt@gmx.de

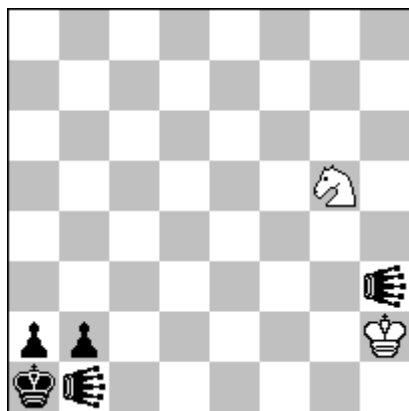
Stephan Dietrich, Heilbronn, Germany

Jubiläumsturnier Klaus Wenda-75, Die Schwalbe, Oktober 2017

2x Doublegrasshopper (2x Doppelgrashüpfer)

Section: Miniatures: 2nd Prize

#11 (Matt in 11 Zügen) (2+5), C+, Popeye 4.75



Trys:

1.Sg5-e4 ? [2.Sd2, 3.Sb3#] but 1. ... DGb1-d3 !

1.Sg5-f3 ? DGh3-g3 2.Sd2 [3.Sb3#] but patt

1.Sg5-h7 ! DGh3-h6 2.Sh7-f6 ? DGh6-g6 ! 3.Sd7 [4.Sc5, 5.Sb3#] but 3. ... DGb1-f5 !

These tryes show the daggers for white: mobilising the DGb1 or stalemating black.

Solution:

1.Sg5-h7 ! DGh3-h6 2.Kh2-h3 ! DGh6-h4 3.Kh3-g4 DGh4-h6 4.Sh7-g5 DGh6-h4

5.Kg4-h5 DGh4-f4 6.Kh5-h4 DGf4-h3

(the diagramm position with the white king moved to h4)

7.Sg5-h7 ! DGh3-h8 8.Sh7-f6 !

8...DGh8-h5 9.Sf6-d7 DGh5-c8 10.Sd7-c5 DGc8-c6 11.Sc5-b3#

8...DGh8-g7 9.Sf6-d7 DGg7-e7 10.Sd7-c5 DGe7-d6 11.Sc5-b3#

Comment of judges Klaus Wenda & Hans Gruber:

“ An original scheme with subtly-determined manoeuvres by the knight and the king to keep the doublegrasshopper under control. The ability to move is granted to it in carefully-judged doses until finally it is mastered. An elegant miniature in which black is constantly obliged to accept the fact that the doublegrasshopper is not allowed to make null moves ! “

Stephan Dietrich, Rampachertal 40, 74076 Heilbronn, Germany; DietrichSt@gmx.de

Stephan Dietrich, Heilbronn, Germany

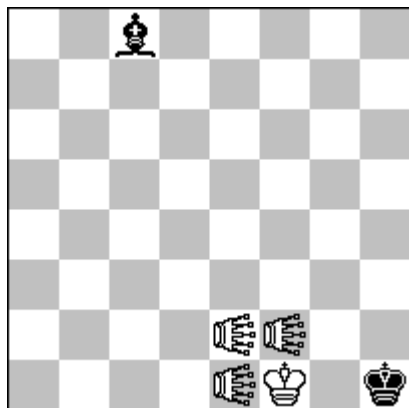
Jubiläumsturnier Klaus Wenda-75, Die Schwalbe, Oktober 2017

3x Doublegrasshopper (3x Doppelgrashüpfer)

Section: Miniatures: 3rd Prize

s#12 (Selbstmatt in 12 Zügen) * (4+2), C+, Popeye 4.75

Maximummer (Längstzüger)



Set play:

1...Lc8-h3 #

Solution:

1.DGe1-e3 Lc8-h3+ 2.Kf1-e1 Lh3-c8 3.DGf2-f4 Lc8-h3 4.DGe2-g4 Lh3-f1
 5.Ke1-f2 Lf1-a6 6.DGf4-g2 La6-f1 7.DGe3-e1 Lf1-a6 8.Kf2-g3 La6-f1
 9.DGe1-f2 Lf1-a6 10.Kg3-h3 La6-f1 11.DGf2-h4 Lf1-a6 12.DGg2-g3 La6-f1 #

FataMorgana: mate in Echo-Position.

Comment of judges Klaus Wenda & Hans Gruber:

“An unbelievable find with an echo around the long diagonal and a solution in which copious use is made of the doublegrasshoppers while the bishop can be tamed by the maximummer condition (but the manner of its switchback from the c8-h3 diagonal to a6-1 is skilfully managed by white). Despite its lack of any profound strategy this problem offers aesthetic enjoyment mixed with a touch of humour – the energetic doublegrashoppers match the spirit of the tourney splendidly. Just like the 1st Prize poble this is one for the anthologies.”

Stephan Dietrich, Rampachertal 40, 74076 Heilbronn, Germany; DietrichSt@gmx.de

WCCI 2016-2018

Number 4

Stephan Dietrich, Heilbronn, Germany

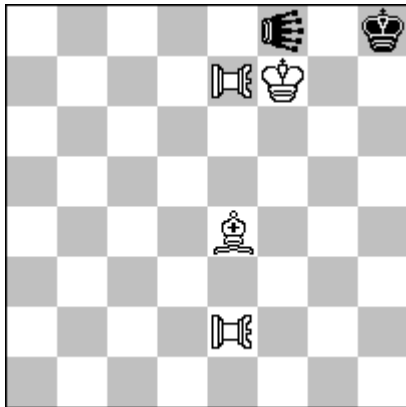
Jubiläumsturnier Klaus Wenda-75, Die Schwalbe, Oktober 2017

2x Doublerookhopper, 1x Doublegrasshopper

(2x Doppelturmhüpfer, 1x Doppelgrashüpfer)

Section: Miniatures: 1st honored mention

#11 (Matt in 11 Zügen) (4+2), C+, Popeye 4.75



Solution:

1.DTe2-e3 DGf8-d8 2.Kf7-f8 DGd8-e8 3.Le4-d3 DGe8-e2 4.DTe3-e6 DGe2-f7
5.Ld3-g6 DGf7-f5 6.DTe7-g5 DGf5-f7 7.Lg6-c2 DGf7-h5 8.Lc2-b1 DGh5-d7
9.Lb1-g6 DGd7-h5 10.DTe6-h4 DGh5-h7 11.Lg6-h5 #

Trys:

7. Ld3 ? DGf7-d2 !

7. Le4 ? DGf7-f3 !

7. Le1 ? DGf7-h5 8.Lc2? DGh5-b1 !

Comment of judges Klaus Wenda & Hand Gruber:

“Ingenious and very surprising play by the white bishop to keep the doublegrasshopper under control; ample use is made of the ban on null moves by the doublegrasshopper”.

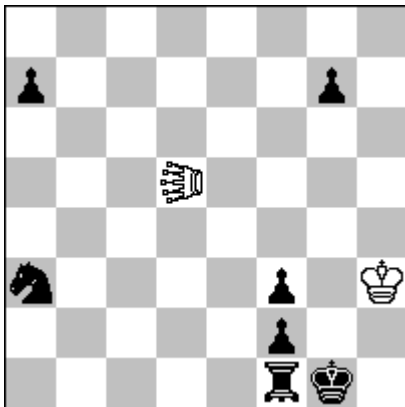
Stephan Dietrich, Rampachertal 40, 74076 Heilbronn, Germany; DietrichSt@gmx.de

Stephan Dietrich, Heilbronn, Germany

Hans-Peter-Rehm-75-JT, Die Schwalbe, Dezember 2018, 1st Commendation

#13 (2+7), C+ Popeye (4.75)

1x Leo, 1x Rookhopper (1x Leo LE, 1x Turmhüpfer TH)



1.LEd5-c5+ ? Kg1-h1 2.LEc5-c1+ is not mate, because of 2. ... THb1 !

So the knight on a3 must prevent rookhopper-jump THb1 and must be forced to go to b1. This can be realized by checking on a1.

The try

1.LEd4+ ? Kh1 2.LEa1+ Sb1 3.LEa8+ ? Kg1 4.LEg8+ Kh1 5.LEd5+ Kg1 6.LEc5+ Kh1 7.LEc1# does not work because of pawn on a7, who prevents moving Leo in 3rd move to a8.

So first, the pawn on a7 must disappear.

Solution:

Plan 1: Disappearing of Pawn a7 and Leo goes back to d5

1.LEd5-g8+ Kg1-h1 2.LEg8-h7+ Kh1-g1 3.LEh7xa7+ Kg1-h1 4.LEa7-a8+ Kh1-g1
5.LEa8-g8+ Kg1-h1 6.LEg8-d5+ Kh1-g1

Plan 2: Forcing knight to go to b1 and Leo goes back to d5

7.LEd5-d4+ Kg1-h1 8.LEd4-a1+ Sa3-b1 9.LEa1-a8+ Kh1-g1 10.LEa8-g8+ Kg1-h1
11.LEg8-d5+ Kh1-g1

Main-plan:

12.LEd5-c5+ Kg1-h1 13.LEc5-c1#

Problem of new german logical style.

Stephan Dietrich, Rampachertal 40, 74076 Heilbronn, Germany; DietrichSt@gmx.de