

**ENTRIES FOR WORLD CHAMPIONSHIP IN
COMPOSING FOR INDIVIDUALS
(WCCI) 2016-18**

(G: FAIRIES SECTION)

FROM S. K. BALASUBRAMANIAN (INDIA)

(E-Mail: skbala_bhu2002@yahoo.co.in)

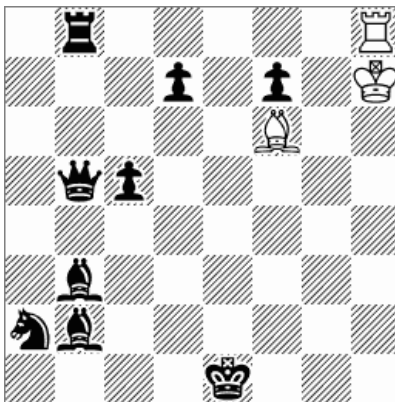
Note:

1. Problems have been arranged in chronological order of their publication.
2. All Problems have been computer tested using Popeye Version 4.77.
3. Definitions for some unpopular fairy pieces & conditions have been given at the bottom of the problem.
4. Theme/Gist of the theme for formal tourneys have also been given wherever applicable.

ENTRY No.1**S.K. Balasubramanian (India)**

Prob.No. FA1577 (Fairies - Section A)
 "Strate Gems", Jan-Mar 2017, (SG-77, Vol.20)

(No Award)



(3+9)

White: Bf6 Kh7 Rh8

Black: Sa2 Bb2 Bb3 Qb5 Rb8 Pc5 Pd7 Ke1 Pf7

H #2 Take & Make + Back-To-Back**(a) Diagram (b) bKe1 → f3****(C+ Popeye 4.77)****(a) 1.Re8 R*e8-e2+ 2.Ka1 R*b2-a3 # (3.Kb1?)****(b) 1.Be5 B*e5-f4+ 2.Ka8 B*b8-b6 # (3.Kb7?)****Comments by the Author:**

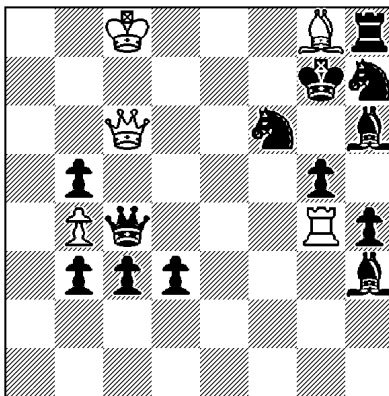
1. Change of roles between Two Pairs of pieces (wRh8/wBf6, bRb8/bBb2).
2. ODT.
3. The flight squares of bK (b1 in (a) & b7 in (b) are guarded by BTB effect.
4. Meredith.

Back-To-Back :

When a white piece stands one rank above a black piece on the same file, they exchange their roles (i.e., powers of movement). A pawn on the first rank cannot move. Any piece can make an en passant capture when it is given a power to move as P by BTB

ENTRY No.2

S.K. Balasubramanian (India)
22ND - 23RD PLACE (7.2 Points)
10th WCCT, G-Section : Fairies
(Award Date - July 2017)



(5+13)

White: Pb4 Qc6 Kc8 Rg4 Bg8

Black: Pb3 Pb5 Pc3 Qc4 Pd3 Sf6 Pg5 Kg7 Bh3 Ph4 Bh6 Sh7 Rh8

H#2 Take & Make**(a) Diagram (b) bKg7 → f5****(C+ Popeye 4.77)**(a) 1.Qd4 Q*f6-e8 2.K*g8-c4 Q*h8-g8 #(b) 1.Qd5 Q*f6-d7+ 2.K*g4-c4 Q*h3-g4 #

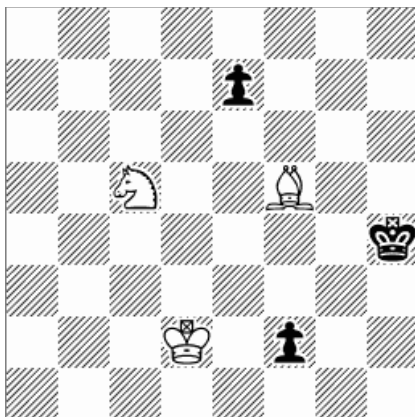
Theme : In a solution of a helpmate (h#2, h#2.5 or h#3) with **Take&Make** fairy condition an "invisible capture" takes place. An "invisible capture" occurs when a unit standing on a square **A** can move to a square **B**, but in fact it arrives to square **B** in the "make" part of the move. The result looks like an orthodox move with the additional effect of disappearance of the captured piece. The theme may be implemented by White and/or Black. It is also considered thematic if **A** and **B** are the same square.

Comments by the Author:

- Exchange of roles between TWO pairs of pieces:**
 - wR & wB: sacrifice to bK vs. pinning bQ.
 - bRh8 & bBh3: sacrifice to unguard mating square vs. static pin of white.
- Unpinning, square vacation & anticipatory self-pin by BQ.**
- Check preventing shut-off by wQ.**
- Line clearance by bK for wQ.**
- Pin mates.**
- Three out of four moves are Take&Make moves.
- bK arrive on the same square** with a long range T&M move and gets mated.

ENTRY No.3**S.K. Balasubramanian (India)****2ND HM**

Prob.No. FA1639 (Fairies - Section A)
 "Strate Gems", Oct-Dec 2017 (SG-80, Vol.20)



(3+3)

White: Sc5 Kd2 Bf5

Black: Pe7 Pf2 Kh4

H #2 Back-To-Back**(2 Solutions)****(C+ Popeye 4.77)****1.f1=Q Be4 2.Qc4+ Sh5 #****1.f1=R Se4 2.Rf4+ Bh5 #****Comments by the Judge:**

Carefully chosen black promotions allow exchange of functions between white pieces which also exchange their arrival squares. A delicious miniature.

Comments by the Author:

1. Black promotions to **Q & R** and changing their powers to **S & B (Virtual AUW!)**.
2. Exchange of functions between wS & wB.
3. Play by white to the same squares (e4,h5).
4. Miniature.

Back-To-Back :

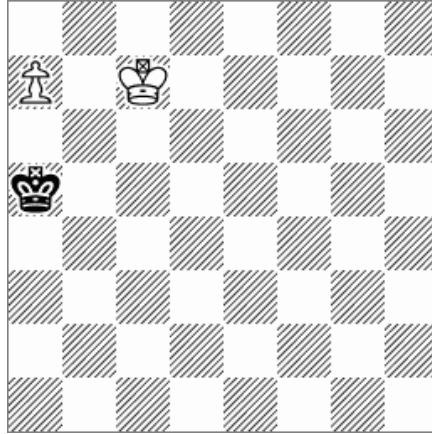
When a white piece stands one rank above a black piece on the same file, they exchange their roles (i.e., powers of movement). A pawn on the first rank cannot move. Any piece can make an en passant capture when it is given a power to move as P by BTB.

ENTRY No.4**S.K. Balasubramanian (India)**

Prob.No. 1305

"julfairies.com", 7th Jul, 2018

(Award - Not yet announced)



(2+1)

White: Pa7 Kc7

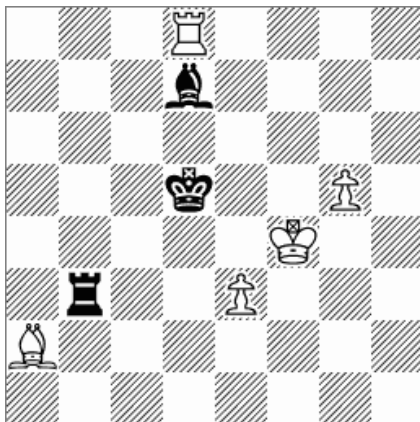
Black: Ka5

H # 2 Superguards**(2 Solutions)****(C+ Popeye 4.77)****1.Ka6 a8=B 2.Ka7 Kb7 #****1.Kb5 a8=S 2.Ka6 Kb6 #****Comments by the Authors:**

1. Chameleon Echo with two under-promotions.
2. Tanagra (only 3 pieces).
3. Ideal mates.

Superguards :

Any piece (including Kings and Pawns), which is observed by another piece of the same color cannot be captured. Pinned pieces also observe.

ENTRY No.5**S.K. Balasubramanian (India)****4TH HM****Quick Composing SUPERPROBLEM Thematic Tourney
TT-211, "Auto Unpinning"****(Award Date - 14.12.2018)**

(5+3)

White : Ba2 Rd8 Pe3 Kf4 Pg5
 Black : Rb3 Kd5 Bd7

H#2 (Superguards)**(2 Solutions)****(C+ Popeye 4.77)****1.Rb3-b5 Rd8*d7 2.Kd5-e5 Ba2-d5 (Rd7-d5?) #****1.Bd7-c6 Ba2*b3 2.Kd5-e4 Rd8-d5 (Bb3-d5?)#**

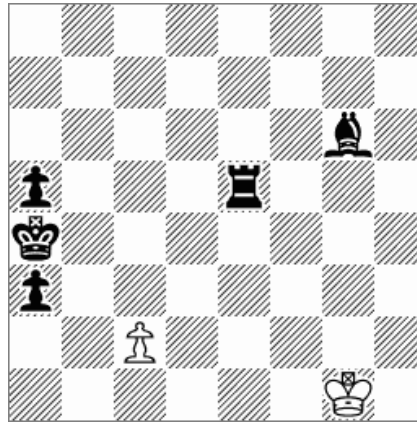
Theme : (Not verbatim) A piece X is pinned by a piece Y, that for this tournament means the following: at least one move of X or just lifting it up would cause a check to the own King by Y. During the solution X unpins itself by leaving the pinning line (line between Y and the King/royal piece) without capturing or changing the position of Y and without closing the pinning line within the same move. Fairy pieces and fairy conditions are allowed.

Comments by the judge:

Very harmonious with quite a lot of contents in a position with only 8 men: exchange of function on both sides, ODT and a subtle dual avoidance in the mating move, where the wK (!) gives the mate.

Superguards :

Any piece (including Kings and Pawns), which is observed by another piece of the same color cannot be captured. Pinned pieces also observe.

ENTRY No.6**S.K. Balasubramanian (India)****3RD HM****Quick Composing SUPERPROBLEM Thematic Tourney
TT-216, "The Magic Wonder Masand Chess"****(Award Date - 27.12.2018)****(2+5)**

White : Pa3 Ka4 Pa5 Re5 Bg6

Black : Pc2 Kg1

H#3 (Masand)**(2 Solutions)****(C+ Popeye 4.77)**

1.Rd5 Kg2 2.Be4[c2=b][d5=w]+ Kf1 3.Bd3[c2=w]+ Rd4[d3=w] #
 1.Bh5 Pc3 2.Rg5[a5=w][h5=w]+ Bg4 3.Rh5 Bd1[h5=w] #

Theme : Fairy problem with the condition Masand: Fairy pieces and another fairy conditions are not allowed. In all sections multiple solutions are allowed if all the solutions are thematic. Twins of any type are allowed. Zero-positions are not allowed.

Masand: "When a piece X by its move gives direct check, all pieces of the same color which are controlled by X, and all pieces of opposite color which are attacked by X, change color (except kings). A Rook, changed color in a corner, can participate in castling".

Comments by the Author:

1. Mutual Color Changes between bR & bB.
2. Exchange of functions between bR and bB. In one solution Bishop guards flight square after Masand color change and Rook mates. In the other solution Rook guards flight square after Masand color change and Bishop mates. Both these color changes occur on the mating moves.
3. In both solutions wPc2 plays vital roles.
4. Miniature.