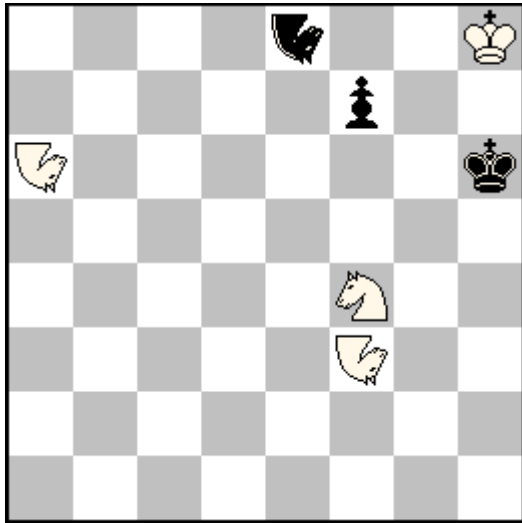


No. 1

N. Shankar Ram

Julia's Fairies 2016 (No.1149, 26.02.2016)



±2

(4+3)

♞♞=Nightrider

1.Nc2? ZZ

1...f6 2.Ng4‡

1...Nf6 2.Ncd4‡

1...f5!, Nh2!

1.Ne4! [2.Ng8‡]

1...f6 2.Nf2‡

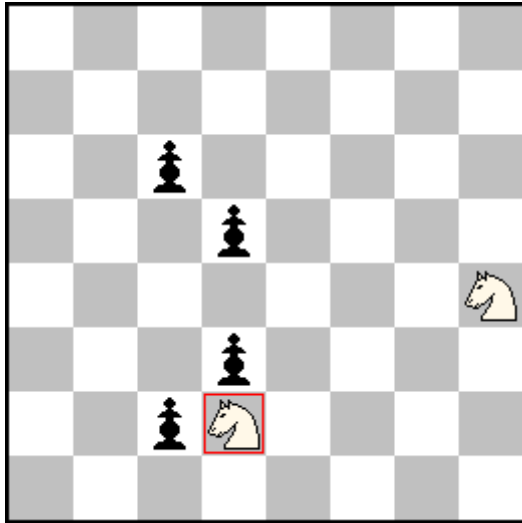
1...Nf6 2.Nfd4‡

- Miniature
- N/P Grimshaw
- Changed mates after Grimshaw

No. 2

N. Shankar Ram

3rd Prize, Julia's Fairies 2016 (No.1008, 20.02.2016)



=4 (2+4) C+

b) Turn board 90° (h4 -> d1)

□=Paralysing piece

- 4x3x2 Combinatory WS tour cycle doubled
- Miniature

a)

1.SPb3! blocus

1...d2 2.Sf5 d4 3.S×d4 c1~ 4.S×c6=

3...c5 4.S×c2=

2...c1~ 3.Se7 d4 4.S×c6=

3...c5 4.S×d5=

2...c5 3.Se3 d4 4.S×c2=

3...c1~ 4.S×d5=

1...d4 2.Sf3 d2 3.S×d4 c1~ 4.S×c6=

3...c5 4.S×c2=

2...c1~ 3.Se5 d2 4.S×c6=

3...c5 4.S×d3=

2...c5 3.Se1 d2 4.S×c2=

3...c1~ 4.S×d3=

1...c1~ 2.Sg6 d2 3.Se7 d4 4.S×c6=

3...c5 4.S×d5=

2...d4 3.Se5 d2 4.S×c6=

3...c5 4.S×d3=

2...c5 3.Sf4 d2 4.S×d5=

3...d4 4.S×d3=

1...c5 2.Sg2 d2 3.Se3 d4 4.S×c2=

3...c1~ 4.S×d5=

2...d4 3.Se1 d2 4.S×c2=

3...c1~ 4.S×d3=

2...c1~ 3.Sf4 d2 4.S×d5=

3...d4 4.S×d3=

b)

1.SPd6! blocus

1...c4 2.Se3 e4 3.Sd5 b5 4.S×f6=

3...f5 4.S×b6=

2...b5 3.Sg4 e4 4.S×f6=

3...f5 4.S×e5=

2...f5 3.S×c4 e4 4.S×b6=

3...b5 4.S×e5=

1...e4 2.Sc3 c4 3.Sd5 b5 4.S×f6=

3...f5 4.S×b6=

2...b5 3.S×e4 c4 4.S×f6=

3...f5 4.S×c5=

2...f5 3.Sa4 c4 4.S×b6=

3...b5 4.S×c5=

1...b5 2.Sf2 c4 3.Sg4 e4 4.S×f6=

3...f5 4.S×e5=

2...e4 3.S×e4 c4 4.S×f6=

3...f5 4.S×c5=

2...f5 3.Sd3 c4 4.S×e5=

3...e4 4.S×c5=

1...f5 2.Sb2 c4 3.S×c4 e4 4.S×b6=

3...b5 4.S×e5=

2...e4 3.Sa4 c4 4.S×b6=

3...b5 4.S×c5=

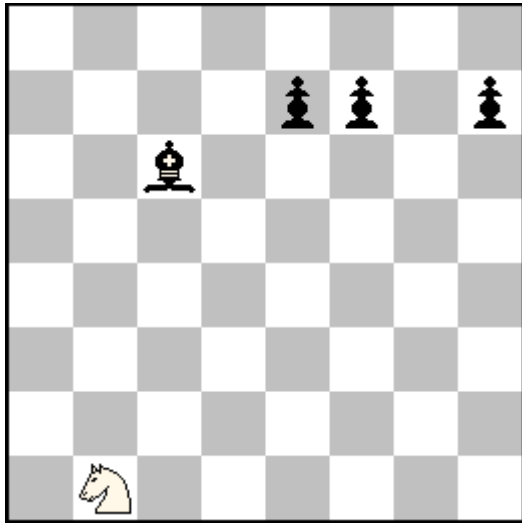
2...b5 3.Sd3 c4 4.S×e5=

3...e4 4.S×c5=

No. 3

N.Shankar Ram

Julia's Fairies 2016 (No.1015, 27.02.2016)



[g7]5 (1+4) C+
(W reaches g7 in 5 moves)
Captures not allowed (Schlagzwang)

1.Sc3! Multi-threat

1...Be8 2.Se2

2...e6 3.Sg3

3...f5 4.Sh5 & 5.Sg7

3...h5 4.Sf5 & 5.Sg7

2...f5 3.Sf4

3...e6 4.Sh5 & 5.Sg7

3...h5 4.Se6 & 5.Sg7

2...h5 3.Sd4

3...e6 4.Sf5 & 5.Sg7

3...f5 4.Se6 & 5.Sg7

1...e6 2.Se4

2...Be8 3.Sg3

3...f5 4.Sh5 & 5.Sg7

3...h5 4.Sf5 & 5.Sg7

2...f5 3.Sf6

3...Be8 4.Sh5 & 5.Sg7

3...h5 4.Se8 & 5.Sg7

2...h5 3.Sd6

3...Be8 4.Sf5 & 5.Sg7

3...f5 4.Se8 & 5.Sg7

1...f5 2.Sd5

2...Be8 3.Sf4

3...e6 4.Sh5 & 5.Sg7

3...h5 4.Se6 & 5.Sg7

2...e6 3.Sf6

3...Be8 4.Sh5 & 5.Sg7

3...h5 4.Se8 & 5.Sg7

2...h5 3.Sc7

3...Be8 4.Se6 & 5.Sg7

3...e6 4.Se8 & 5.Sg7

1...h5 2.Sb5

2...Be8 3.Sd4

3...e6 4.Sf5 & 5.Sg7

3...f5 4.Se6 & 5.Sg7

2...e6 3.Sd6

3...Be8 4.Sf5 & 5.Sg7

3...f5 4.Se8 & 5.Sg7

2...f5 3.Sc7

3...Be8 4.Se6 & 5.Sg7

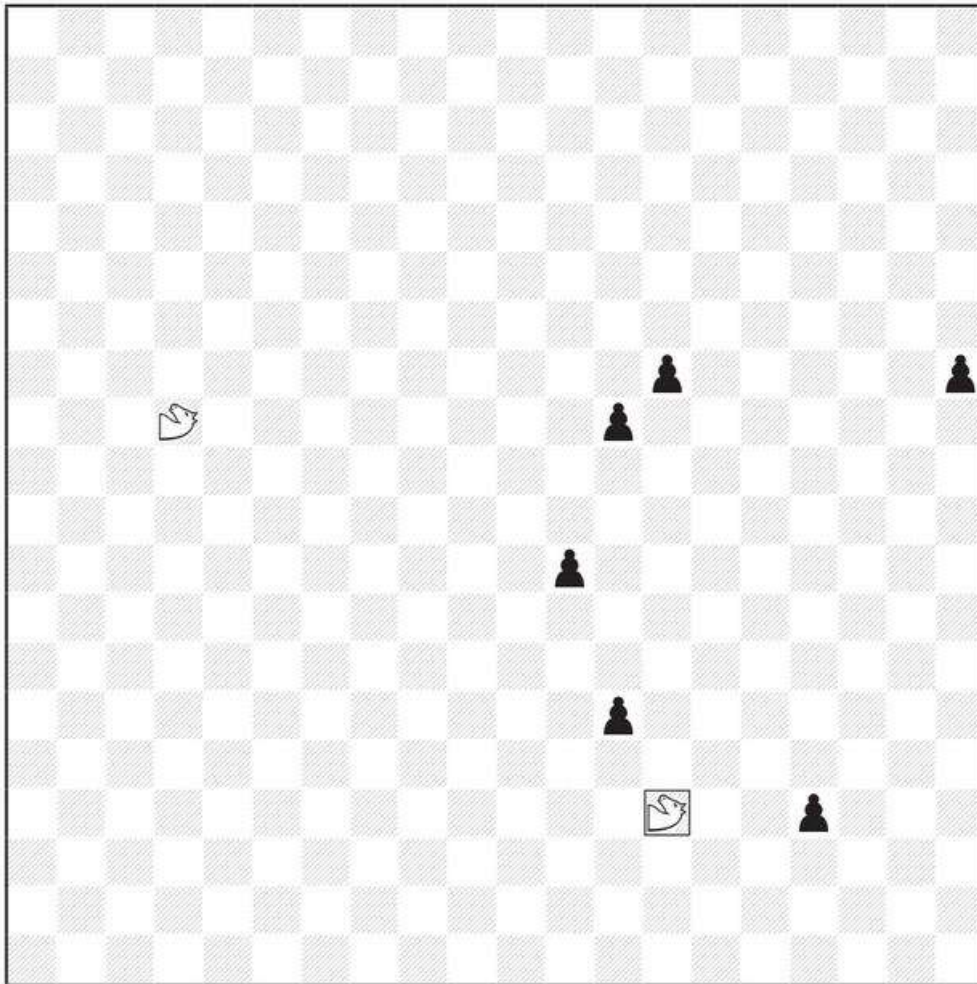
3...e6 4.Se8 & 5.Sg7

- 4x3x2 WS Tour Cycle in threat form with only 5 pieces
- 24 variation Fleck

No. 4

N.Shankar Ram

Phénix, May-June 2016 (issue 261- 262)



=6 20x20 Board \square =Paralysing Piece ♞ =Root-25 Leaper[(5,0)+(3,4) Leaper] (2+6) C+

1.PR25Lq8! ZZ

Sample full length variations:

1...t12 2.R25La8 n12 3.R25Ld4 m11 4.R25Lh1 l8 5.R25Lm1 m5 6.R25L×q4=

1...n12 2.R25Lg8 m11 3.R25Lk5 l8 4.R25Lp5 m5 5.R25Lt8 q3 6.R25L×t13=

1...m11 2.R25Lh9 l8 3.R25Lm9 m5 4.R25Lq12 q3 5.R25Lq17 t12 6.R25L×n13=

1...l8 2.R25Li12 m5 3.R25Lm15 q3 4.R25Lm20 t12 5.R25Lj16 n12 6.R25L×m12=

1...m5 2.R25Lh15 q3 3.R25Lh20 t12 4.R25Le16 n12 5.R25Lh12 m11 6.R25L×l9=

1...q3 2.R25Ld17 t12 3.R25La13 n12 4.R25Ld9 m11 5.R25Lh6 l8 6.R25L×m6=

(For full solution from WinChloe, see [here](#))

- 6x5x4x3x2 Combinatory W Leaper tour cycles.
- Total of 720 variations.

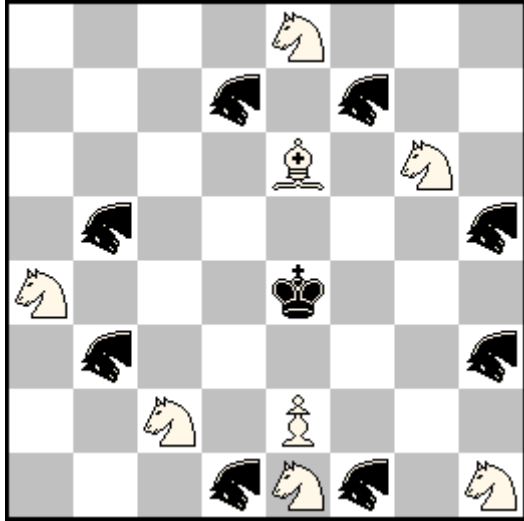
No. 5

N.Shankar Ram

Julia's Fairies 2016

(No.1170, 18.12.2016)

Special Honourable Mention



≠4 (8+9) C+
 ♞=Impala [S + Antelope {(3,4) Leaper}]

- b) ♞=S + (0,5) Leaper
- c) ♞=Wazir(0,1) + Zebra(2,3) + Giraffe(1,4)
- d) ♞= Wazir(0,1) + Giraffe(1,4) + Corsair(2,5)
- e) ♞= Zebra(2,3) + Giraffe(1,4) + Corsair(2,5)
- f) ♞= Wazir(0,1) + Zebra(2,3) + Corsair(2,5)

- 4x3 Jacobs theme doubled in each of the 6 phases.
- Two separate 4x3x2 cycles in each phase.
- 6x8 Zagoruyko in a #4.
- 2x4 Lacny theme doubled (in phases a & b).
- 4x4 Lacny theme doubled (in phases c, d, e & f).

a) 1.Sf3!(zz)

1... Xb3~ 2.Sh1-g3+ Xh5xg3 3.Sa4-c5+ Xf1xc5 4.Sf3-d2#
 3...Xd7xc5 4.Se8-f6#
 2...Xf1xg3 3.Se8-f6+ Xh5xf6 4.Sf3-d2#
 3...Xd7xf6 4.Sa4-c5#
 2...Xd7xg3 3.Sf3-d2+ Xh5xd2 4.Se8-f6#
 3...Xf1xd2 4.Sa4-c5#

1... Xf1~ 2.Se8-f6+ Xh5xf6 3.Sa4-c5+ Xd7xc5 4.Sh1-g3#
 3...Xb3xc5 4.Sf3-d2#
 2...Xd7xf6 3.Sf3-d2+ Xh5xd2 4.Sh1-g3#
 3...Xb3xd2 4.Sa4-c5#
 2...Xb3xf6 3.Sh1-g3+ Xh5xg3 4.Sf3-d2#
 3...Xd7xg3 4.Sa4-c5#

1... Xh5~ 2.Sa4-c5+ Xf1xc5 3.Se8-f6+ Xd7xf6 4.Sh1-g3#
 3...Xb3xf6 4.Sf3-d2#
 2...Xd7xc5 3.Sf3-d2+ Xf1xd2 4.Sh1-g3#
 3...Xb3xd2 4.Se8-f6#
 2...Xb3xc5 3.Sh1-g3+ Xf1xg3 4.Sf3-d2#
 3...Xd7xg3 4.Se8-f6#

1... Xd7~ 2.Sf3-d2+ Xh5xd2 3.Sa4-c5+ Xf1xc5 4.Sh1-g3#
 3...Xb3xc5 4.Se8-f6#
 2...Xf1xd2 3.Se8-f6+ Xh5xf6 4.Sh1-g3#
 3...Xb3xf6 4.Sa4-c5#
 2...Xb3xd2 3.Sh1-g3+ Xh5xg3 4.Se8-f6#
 3...Xf1xg3 4.Sa4-c5#

1..Xb5~/Xf7~/Xh3~/Xd1~ 2.Sg5+/Sf2+/Sc3+/Sd6+

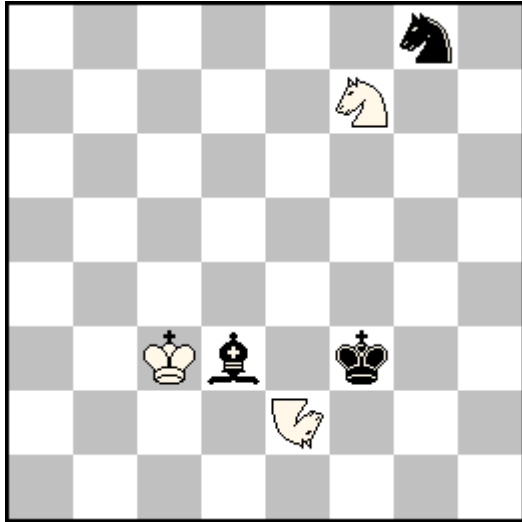
b) – f) 1.Sf3!(zz) and similarly as shown in table below. ♞

For full solution in Julia's Fairies, see [here](#).

- Between any 2 phases there is either a doubled 2x4 Lacny or a quadruple reciprocal change.
- Totally 5 doubled 2x4 Lacnys (between phases a/b, c/d, d/e, e/f & f/c) and 10 quadruple reciprocal changes (between phases a/c, a/d, a/e, a/f, b/c, b/d, b/e, b/f, c/e & d/f).

	(a)	(b)	(c)	(d)	(e)	(f)
1...b3~	2.Sg3+(A)	2.Sf6+(B)	2.Sg5+(E)	2.Sd6+(H)	2.Sc3+(G)	2.Sf2+(F)
1...f1~	2.Sf6+(B)	2.Sc5+(C)	2.Sd6+(H)	2.Sc3+(G)	2.Sf2+(F)	2.Sg5+(E)
1...h5~	2.Sc5+(C)	2.Sd2+(D)	2.Sc3+(G)	2.Sf2+(F)	2.Sg5+(E)	2.Sd6+(H)
1...d7~	2.Sd2+(D)	2.Sg3+(A)	2.Sf2+(F)	2.Sg5+(E)	2.Sd6+(H)	2.Sc3+(G)
1...b5~	2.Sg5+(E)	2.Sf2+(F)	2.Sg3+(A)	2.Sd2+(D)	2.Sc5+(C)	2.Sf6+(B)
1...f7~	2.Sf2+(F)	2.Sc3+(G)	2.Sd2+(D)	2.Sc5+(C)	2.Sf6+(B)	2.Sg3+(A)
1...h3~	2.Sc3+(G)	2.Sd6+(H)	2.Sc5+(C)	2.Sf6+(B)	2.Sg3+(A)	2.Sd2+(D)
1...d1~	2.Sd6+(H)	2.Sg5+(E)	2.Sf6+(B)	2.Sg3+(A)	2.Sd2+(D)	2.Sc5+(C)

No. 6
N. Shankar Ram
The Problemist Supplement
March 2018, PS3292F



hs#3 duplex (3+3) C+
 Madrasi Rex Inclusiv
 ♞=Nightrider

1.Sh6 Bh7 2.Ng6 Ke3 3.Kd3 B×g6‡

1.Sh6 Nh8 2.Bg6 Kd2 3.Ke2 N×g6‡

- Bi-Colour BB/WN Critical Grimshaw g6
- Deferred Umnov effects on d3 and f3
- Zilahi (BB/WS – alternately get captured and mate)
- Function exchange between BB/WN, BS/WS, BK/WK