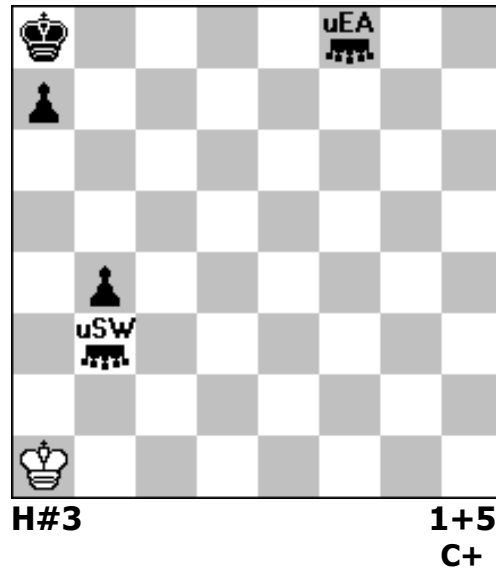


1.

Kenneth H. M. Solja
kenneth.solja(AT)gmail.com
Hansatie 2 A 9
02780 Espoo, Finland

6th Hon Mention Krassimir Gandev 70 JT 2016
section A



- A) diagram
B) hccEaf8->f7

Black hurdle colour changing Sparrow in b3 (hccSPW)
Black hurdle colour changing Eagle in f8 (hccEA)

A) 1 bhccSWa3(wPb4) b5 2 bhccSWf7(whccEaf8) b6
3 bhccSWb8(wPa7) whccEAb7(whccSPWb8)#

B) 1 bhccEAa4(whccSPWb3) whccSWa3(wPb4) 2 bhccEAb7(wPa7) whccSWb6(bPa7)
3 bhccEAa6(wPa7) whccSWb7(whccEAa6)#

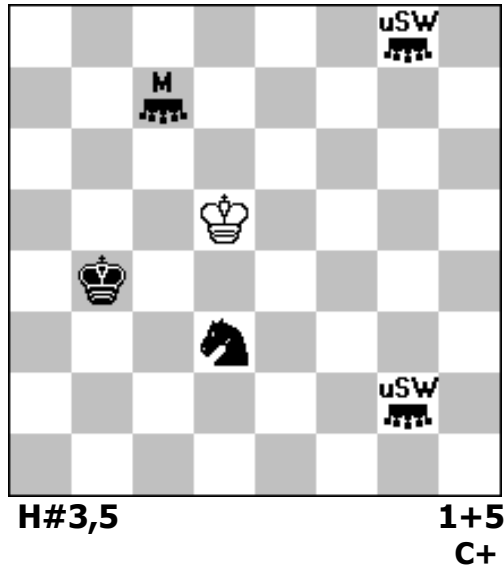
Tested with Popeye 4.73

Changing roles SW/EA

2.

Kenneth H. M. Solja
kenneth.solja(AT)gmail.com
Hansatie 2 A 9
02780 Espoo, Finland

7th Prize Krassimir Gandev 70 JT 2016
section B



- A) diagram
B) bSd3->d7

Black hurdle colour changing Sparrows in g2 and g8 (hccSPW)

- A) 1 – Kc6 2 bhccSWf7(whccSWg8) whccSWg7(whccSWf7) 3 Kc4 whccSWc5
4 Sb2 whccSWc2(wSb2)#
- B) 1 – Ke4 2 bhccSWh3(whccSWg2) whccSWe3 3 Kc5 whccSWg4(whccSWh3)
4 Mb4 whccSWd6(wSd7)#

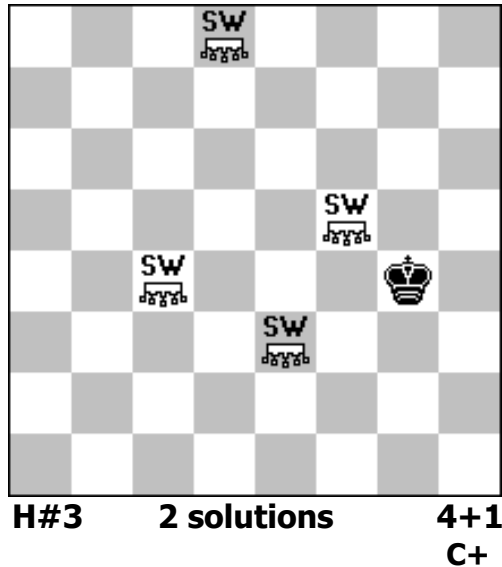
Tested with Popeye 4.73

Hurdle colour changing sparrows making in diagonal and vertical mates.

3.

Kenneth Solja
kenneth.solja(AT)gmail.com
Hansatie 2 A 9
02780 Espoo, Finland

5th Prize Marianka Festival Cup 2017



A) diagram

B) bKg4->c7

C) bKg4->c2, CirceParrain

D) bKg4->h5, CirceParrain

Sparrow (SW) c4, d8, e3 and f5
no white King on board

A1) 1 Kh3 SWg2 2 Kh4 SWg5+ 3 Kh5 SWdg6#

A2) 1 Kg5 SWg6+ 2 Kf4 SWfe5+ 3 Ke4 SWf4#

B1) 1 Kd6 SWc7+ 2 Ke5 SWe6+ 3 Ke4 SWf4#

B2) 1 Kc6 SWd5+ 2 Kd6 SWc7 3 Ke5 SWe6#

C1) 1 Kd3 SWde4+ 2 Kxe3 SWe5(+wSWd3)+ 3 Kxe4 SWE3(+wSWf4)#

C2) 1 Kd2 SWc3+ 2 Kc2 SWd2+ 3 Kxc3 SWc2(+wSWb3)#

D1) 1 Kg5 SWg6+ 2 Kf4 SWfe5+ 3 Ke4 SWf4#

D2) 1 Kh4 SWg4 2 Kg3 SWf3+ 3 Kxf3 SWg3(+wSWf2)#

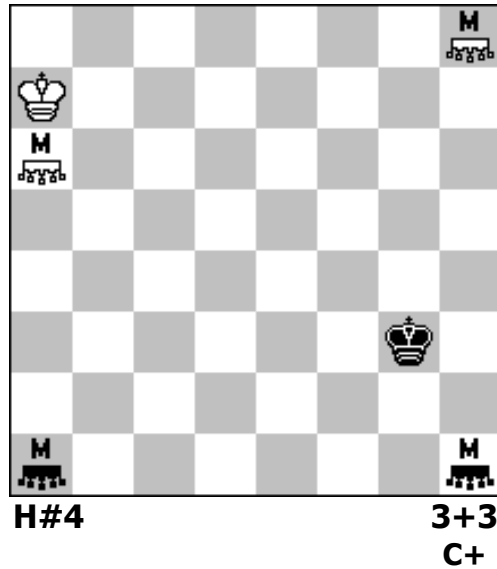
Tested with Popeye 4.69 and WinChloe 3.29

Switchback noir
Switchback de Roi
Umnov
Echec multiple
Zabunov
Anti-batterie
Batterie blanche
Echo

4.

Kenneth H. M. Solja
kenneth.solja(AT)gmail.com
Hansatie 2 A 9
02780 Espoo, Finland

Commendation Marianka Cup 2017



Duplex
Köko

Moose a6, h8, a1 and h1

Black ->

1 Kg3-h2 Ma6-b8 2 Mh1-g3 Mb8-h3 3 Ma1-b8 Mh3-f2 4 Mb8-h3 Mf2-g4#

White-Black Umnov from W1 to B4

White ->

1 Ka7-b6 Ma1-b7 2 Ma6-c7 Mh1-b8 3 Mh8-a7 Mb7-d6 4 Ma7-c6 Mb8-d7#

Very similar matepictures in both solutions

Tested with Popeye 4.73