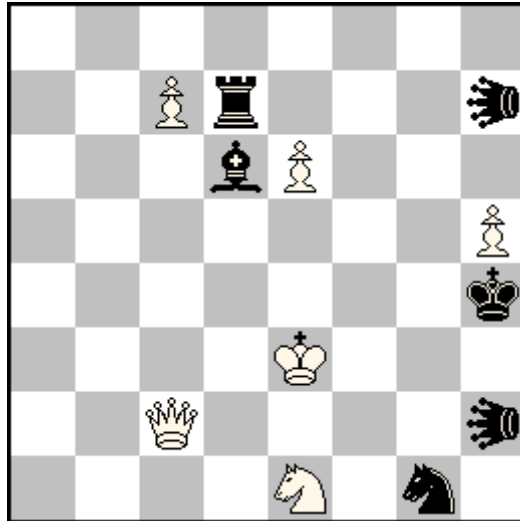
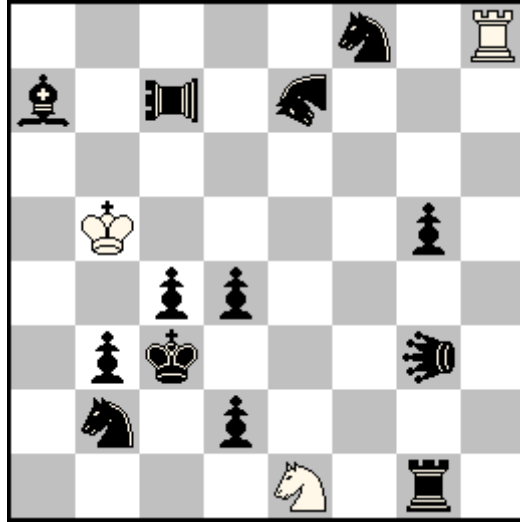


Mario PARRINELLO1st Prize *Gandev-70 JT* 2016

HS#3 b) ♖e1 → d4 (6+6) C+

♚=Andernach LEO

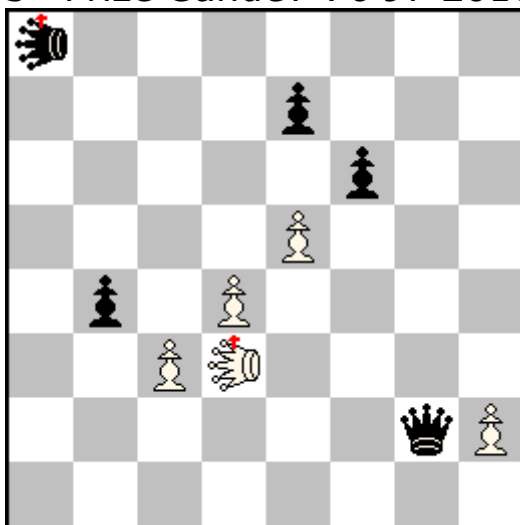
- a) 1.Qf5 hccLE2×c7(Bd6=w) 2.Bh2 hccLEc2 3.Sg2+
hccLE×h2(Sg2=b)‡
- b) 1.Qg2 hccLE7×c7(Rd7=w) 2.Rh7 hccLEc2 3.Sf5+
hccLE×h7(Sf5=b)‡

Mario PARRINELLO2nd Prize *Gandev-70 JT 2016*

H#2 b) ♟c4 → d5 (3+13) C+
 c) ♟c4 → d3

♞=Andernach NAO
 ♝=Andernach LEO
 ♖=Andernach PAO

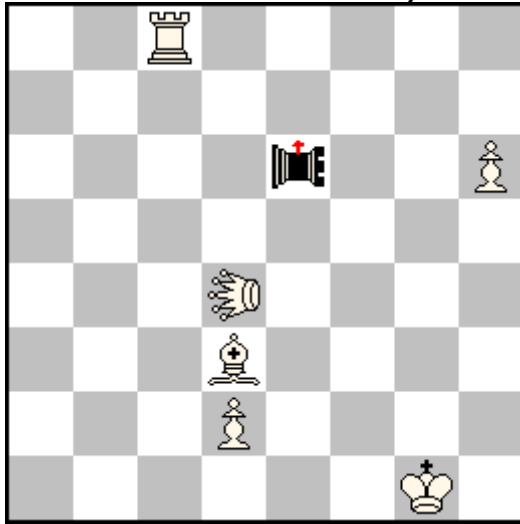
- a) 1.Bb8 Rh1 2.hccNA×h1(LEg3=w) hccLE×b8(PAc7=w)≠
 b) 1.Sh7 Rb8 2.hccLE×b8(PAc7=w) hccPA×h7(NAe7=w)≠
 c) 1.Rh1 Rh7 2.hccPA×h7(NAe7=w) hccNA×h1(LEg3=w)≠

Mario PARRINELLO5th Prize *Gandev-70 JT* 2016

HS#2,5 3 sols. (5+5) C+

♔♚ = Royal Andernach Grasshopper

1...Qc2+ 2.rhccGb1(Qc2=w) bxc3 3.Qa2+ rhccGa1(Qa2=b)≠
 1...Qe2+ 2.rhccGf1(Qe2=w) f5 3.Qg2+ rhccGh1(Qg2=b)≠
 1...Qg6+ 2.rhccGh7(Qg6=w) e6 3.Qg8+ rhccGh8(Qg8=b)≠

Mario PARRINELLO1st Comm. 14th Tzuica Ty 2016

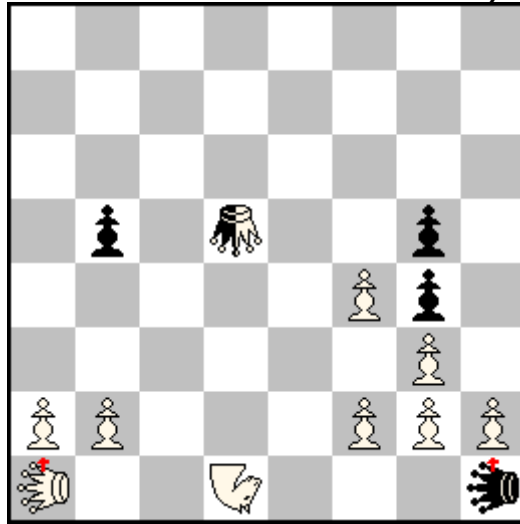
HS#4 b) rTRe6=rNDe6 (6+1) C+

KobulKings

♁ = royal Triton

♂ = Contra-Grasshopper

- a) 1.Bf5+ rTRe5 2.CGf6 rTR×f5-g5 (Kg1=wBg1) 3.rBb6 rTRg6
4.Rg8+ rTR×f6-e6 (rBb6=rCGb6)‡
- b) 1.Rc6+ rNDd5 2.CGd7 rND×c6-b7 (Kg1=wRg1) 3.rRg4 NDc8
4.Ba6+ rND×d7-e6 (rRg4=rCGg4)‡

Mario PARRINELLO3rd Prize 15th *Romanian Tzuica Ty* 2017

HS#3 b) ♞d5 → h4 (9+4+1) C+

AntiKings

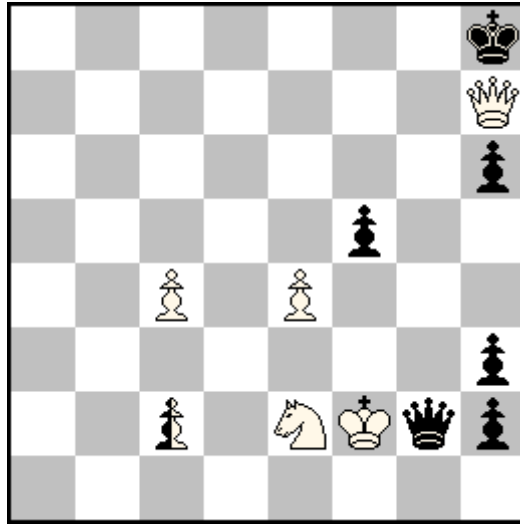
♞ = Nightrider

♞♞ = royal LEO

♞ = Grasshopper

a) 1.nGa5 b4 2.Na7+ nGa8+ 3.Nc6+ nGd5#

b) 1.nGf6 gxf4 2.Ng7+ nGh8+ 3.Nh5+ nGh4#

Mario PARRINELLO1st – 2nd Prize *Julia's Fairies-I* 2016

HS#3

3 sols.

(5+6+1)

C+

Antikings

Anticirce Symmetry

- 1.Sf4 nc1=nS 2.Ke2 Qg6 3.Q×g6(Qb3)+ nS×b3(nSg6)≠
 1.Sd4 nc1=nB 2.Ke3 Qg7 3.Q×g7(Qb2)+ nB×b2(nBg7)≠
 1.Sg1 nc1=nR 2.Ke1 Qg8 3.Q×g8(Qb1)+ nR×b1(nRg8)≠