

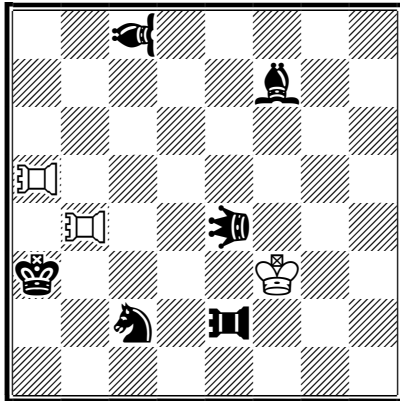
#1

Shifrin Semion

Israel Ring Tourney, "Variantim"

#70, #2908, 2016-12

Prize, 1st



Popeye Windows-64Bit v4.79 (1024 KB)

a) 1.PAb4-b5 LEe4-b4 2.Kf3*f4-c7 PAe2-e5
3.Kc7*c8-a6 + PAe5*a5-a4 #

b) 1.PAa5-a6 LEe4-b7 2.Kf3*e2-e7 VAc8*a6-a4 +
3.Ke7*f7-a2 + Ka3-c1 #

2(b3)5/5b2/8/(R3)7/1(R3)2(q3)3/k4K2/2s1(r3)3/8

hs#3 b) Bf4 move f7 3+6

Sol.

AnnanChess
Take&MakeChess

a5, b4, e2: Pao

e4: Leo

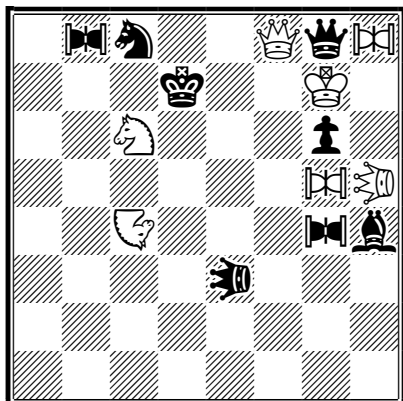
c8: Vao

#2

Shifrin Semion

Moskow Tourney, 2016-11

HM, 1st



Popeye Windows-64Bit v4.79 (1024 KB)

a) 1.EQg5-g3 EQb8-f6 2.Nc4-e5 + Kd7-d6 3.Kg7-f7 + EQf6*f8 #

b) 1.Llh5-f7 EQb8-d4 2.Sc6-e7 + Kd7-d8 3.EQh8-f6 + EQd4*f8 #

1es2QqE/3k2K1/2S3p1/6E(Q3)/2(S2)3eb/4(q3)3/8/8

hs#3 b) EQg4 move 7+8
 e6 Sol.
 Madras
 g5, h8, b8, g4:
 Equihopper
 h5, e3: Lion
 c4: Nightrider

#3

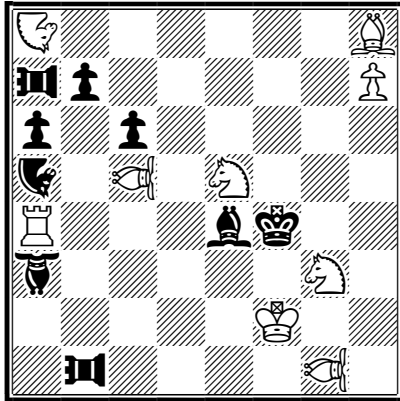
Semion Shifrin

Israel

Israel Ring Tourney, "Variantim"

(#72/3004), 2017-08

2nd Prize



#2 vv

AMU

9+9

g1, c5: Vao
a8, a5:
Nightrider
b1, a7: Pao
a3: Bishop
Hopper

1. Ra4-b4 ? threat: 2. VAc5-d6 A #

1...Na5-b3 c 2. Rb4*e4 B #

1...BHa3*c5 2. VAg1-h2 #

1...Na5-c4 2. Na8-e6 #

but 1...b7-b6 a !

1. Ra4-c4 ? threat: 2. Rc4*e4 B #

1...Na5-b3 c 2. VAc5-d6 A #

1...Na5-c1 2. VAg1-h2 #

1...Na5*c4 2. Na8-e6 #

but 1...b7-b5 b !

1. Bh8-g7 ! threat: 2. h7-h8N #

1...b7-b6 a 2. VAc5-d6 A #

1...b7-b5 b 2. Ra4*e4 B #

1...PAa7*g7 2. VAg1-h2 #

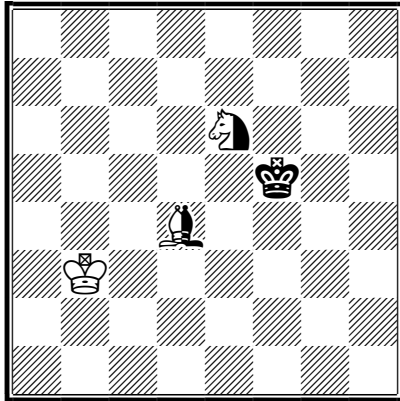
1...Na5-c4 2. Na8-e6 #

" The problem presents the le Grand, Dombrovskis, and Luukonen themes and a sympathetic appendage in the form of a three-phase change according to Rukhlis. The mechanism consists of two parts, each of which is built on defensive and weakening motives in the thematic moves of the blacks: b6, b5 and Nb3. The first two moves of this trio in the tries provide double control over the threatening mate of the white figure, and in the solution after these moves a single control is created over the same Vao and Rook. The move 1...Nb3 in both tries not only helps to neutralize the threat by double guarding the threatening piece, but also provides a single control over the mating piece of white. It is also worth noting that in all phases VAg1 is attacked in three different lines, leading to the same mate."

(Judge: Aleksandr Bulavka)

(S2)6B/(r3)p5P/p1p5/(s2)1(B3)1S3/R3bk2/(b2)5S1/5K2/1(r3)4(B3)1

#4
Semion Shifrin
Israel
FIDE Olimpic Tourney - Batumi,
 2018
 3rd HM



h#3 **AntiSuperCirc** 1+1+2
 e
 ParrainCirce
 d4: Neutral
 Bishop
 e6: Neutral
 Knight

Popeye Windows-64Bit v4.79 (1024 KB)

1.Kf5*e6[bKe6->g8] nBd4-e5[+nSf7] 2.nBe5-b2
 Kb3*b2[wKb2->f6] 3.Kg8*f7[bKf7->h8][+nBa1] +
 Kf6-f7[+nSf8] #
 1.nSe6*d4[nSd4->e5] Kb3-a3[+nBc4]
 2.Kf5*e5[bKe5->a1] nBc4-f7[+nSh8]
 3.nSh8*f7[nSf7->b1] + nSb1-d2[+nBh8] #

"It is very difficult to compose a problem if the
 composer uses one of the most difficult
 combinations between two fairy conditions: the
 powerful Super Anticirce and the super nonstandard
 Circe Parrain in two phases, without twinning!
 Here the author demonstrates with only 4 pieces an
 interesting play that ends with mates of the black
 King in two opposite corners!"

(Judge: Petko A.Petkov)

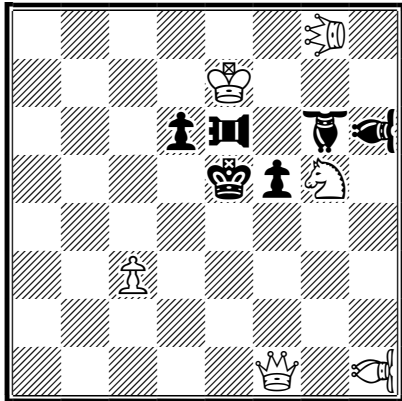
8/8/4(!s)3/5k2/3(!b)4/1K6/8/8

#5

Semion Shifrin

Moskov Tourney, 2018-11

5th HM



#2 vvv

Defence 1

6+6

g8: Leo
h1, h6: Vao
e6: Pao
g6: Bishop
Hopper

1.LEg8-c8 ? threat:

2.Qf1*f5 C #

1...Ke5-d5

2.Qf1-b5 #

1...f5-f4 a

2.Sg5-f3 A #

but

1...PAe6-f6 c !

1.LEg8-f7 ? threat:

2.Sg5-f3 A #

1...PAe6-f6 c

2.Qf1*f5 C #

but

1...f5-f4 a !

1.Qf1-f3 ? threat:

2.Sg5-f7 B #

1...f5-f4 a

2.Qf3-d5 #

but

1...BHg6-e4 b !

1.LEg8-h7 ! threat:

2.Qf1*f5 C #

1...Ke5-d5

2.Qf1-b5 #

1...f5-f4 a

2.Sg5-f3 A #

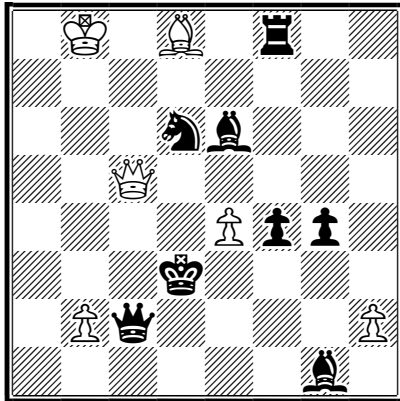
1...BHg6-e4 b

2.Sg5-f7 B #

Meredith , fligth giving key , Dombrovskis (triple !) in combination with its cross-closed form (first and second phases) , double pseudo le Grand .

6(Q3)1/4K3/3p(r3)1(b2)(b3)/4kpS1/8/2P5/8/5Q1(B3)

#6
Semion Shifrin
Israel
Dedicated to the all
participants
of 10th WCCT , section G
Julia's Fairies - 2016 (II) (1099),
 2016-07-20



Popeye Windows-64Bit v4.79 (1024 KB)

1.Qc2-c3 Qc5*g1-d4 + 2.Kd3*d4-e5 b2*c3-d4 #
 1.Be6-d5 Qc5*c2-c3 + 2.Kd3*c3-h3 e4*d5-g2 #
 1.Rf8-f5 Qc5*d6-c4 + 2.Kd3*c4-a6 e4*f5-b5 #

Creation pawn's mates with "Take&Make" effect .
 Absolute analogy between solutions .
 Model mates .

1K1B1r2/8/3sb3/2Q5/4Ppp1/3k4/1Pq4P/6b1

h#2 3 solutions 6+8
 Sol.
Take&MakeCh
ess