



14+3

R#5

Reflexmate in 5

(C+)

Composed by: **Daniele Gatti**

NUMBER 1

5° HONORABLE MENTION on **HUNGARIAN CHESS 2015-2016.**

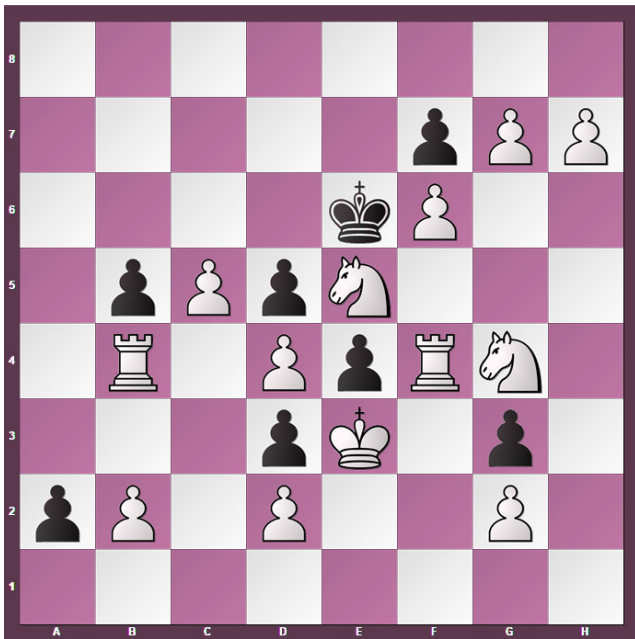
Solution: **1. Rg1!** [zugzwang]

1. ... gxh5 2. Qh4 [zugzwang]
2. ... hxg4 3. Qg3 [zugzwang]
3. ... gxf3 4. Qf2 [zugzwang]
4. ... fxe2 5. Rd1 [zugzwang] ... **exd1=S#**

1. ... gxf5 2. Qf4 [zugzwang]
2. ... fxg4 3. Qg3 [zugzwang]
3. ... gxf3 4. Qf2 [zugzwang]
4. ... fxe2 5. Rd1 [zugzwang] ... **exd1=S#**

1. ... g5 2. f4 [zugzwang]
2. ... gxf4 3. e4 [zugzwang]
3. ... f3 4. Qf2 [zugzwang]
4. ... fxe2 5. Rd1 [zugzwang] ... **exd1=S#**

FEN: 8/8/6p1/2p2P1P/2P3P1/2KBPP2/k1NNP1RQ/B7



13+8

R#6

Reflexmate in 6

(C+)

Composed by: **Daniele Gatti**

NUMBER 2

Published on [DIE SCHWALBE \(2016\)](#)

[Waiting for verdict](#)

Solution: **1. g8=S!** [zugzwang]

1. ... a1=B 2. h8=R [zugzwang]

2. ... Bxb2 3. Rxb2 [zugzwang]

3. ... b4 4. Rh1 [zugzwang]

4. ... b3 5. Sf2 [zugzwang]

5. ... gxf2 6. Re1 [zugzwang] ... **fxe1=Q#**

2. *h8=Q?* [zugzwang]

2. ... Bxb2 3. Rxb2 [zugzwang]

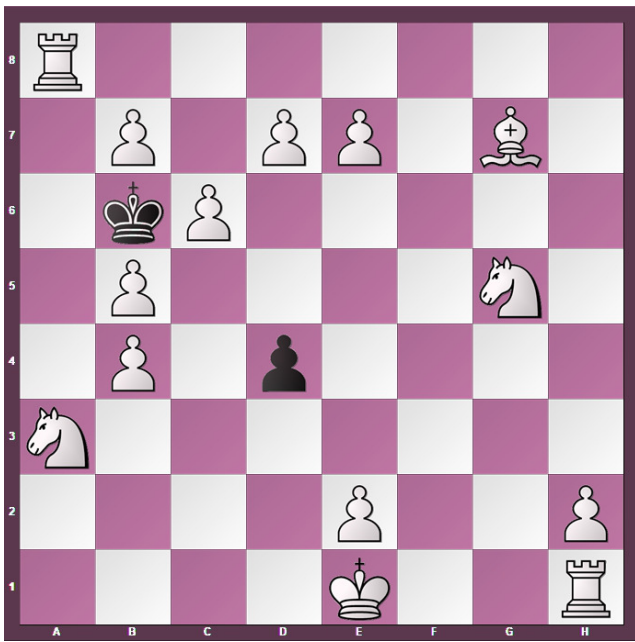
3. ... b4 4. Rh1 [zugzwang]

4. ... b3 5. Sf2 [zugzwang]

5. ... gxf2 6. *for reflex condition, Qh3#!*

Bi-color AUW theme.

FEN: 8/5pPP/4kP2/1pPpN3/1R1PpRN1/3pK1p1/pP1P2P1/8



14+2 semi-R#6

Semi-Reflexmate in 6

(C+)

Composed by: **Daniele Gatti**

NUMBER 3

Published on PROBLEEMBLAD (2016)

(Waiting for verdict)

Solution: **1. b8=R+!**

1. ... Kc7 2. d8=B+

2. ... Kd6 3. e8=S+

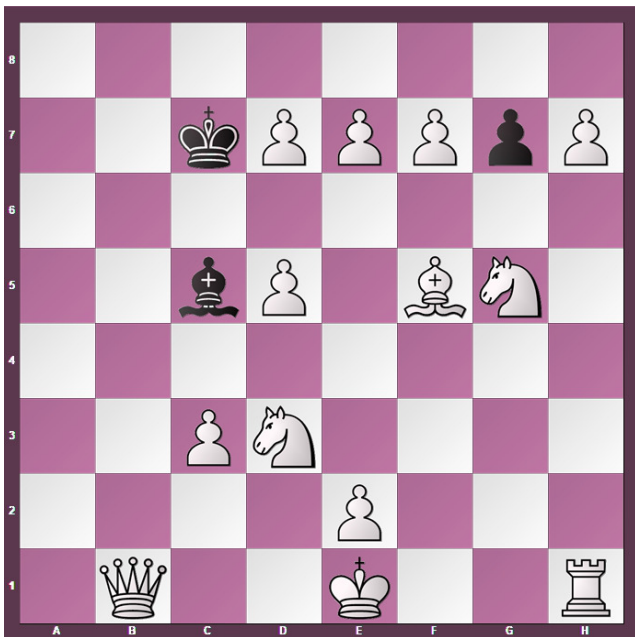
3. ... Kd5 4. e4+

4. ... dxe3 e.p. 5. O-O [zugzwang]

5. ... e2 6. Kh1 [zugzwang] ... **exf1=Q#**

Valladao + AUW. Black Minimal configuration.

FEN: R7/1P1PP1B1/1kP5/1P4N1/1P1p4/N7/4P2P/4K2R



13+3 semi-R#8

Semi-Reflexmate in 8

(C+)

Composed by: **Daniele Gatti**

NUMBER 4

Published on PROBLEM PARADISE (2018)

Waiting for verdict

Try: **1. Sxc5** [zugzwang] ?

But 1. ... Kd6!

Try: **1. Se6+?**

But 1. ... Kd6!

Try: **1. e8=S+?**

But 1. ... Kd8!

Solution: **1. d8=B+!**

1. ... Kd6 2. e8=S+

2. ... Kxd5 3. Qb5 [zugzwang]

3. ... g6 4. h8=R [zugzwang]

4. ... gxf5 5. R8h2 [zugzwang]

5. ... f4 6. e4+

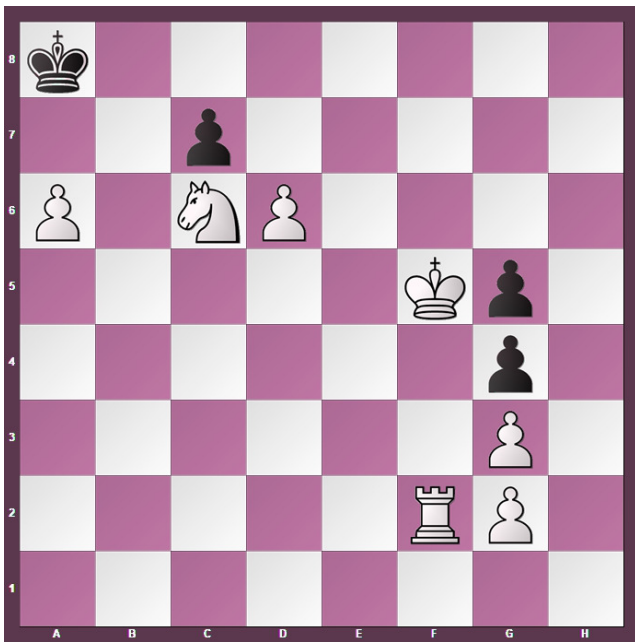
6. ... fxe3 e.p. 7. O-O [zugzwang]

7. ... e2+ 8. Kh1 [zugzwang] ... **exf1=Q#**

Keym task: Valladao + AUW + Excelsior.

Problem FULLY C+ tested with Popeye.

FEN: 8/2kPPPpP/8/2bP1BN1/8/2PN4/4P3/1Q2K2R



6+4

R#6

Reflexmate in 6

(C+)

Composed by: **Daniele Gatti**

NUMBER 5

2° COMMENDATION on PROBLEM OBSERVER – Section OTHER TYPES (2016)

Solution: **1. Ke5!** [zugzwang]

1. ... cxd6+ 2. Ke4 [zugzwang]

2. ... d5+ 3. Ke3 [zugzwang]

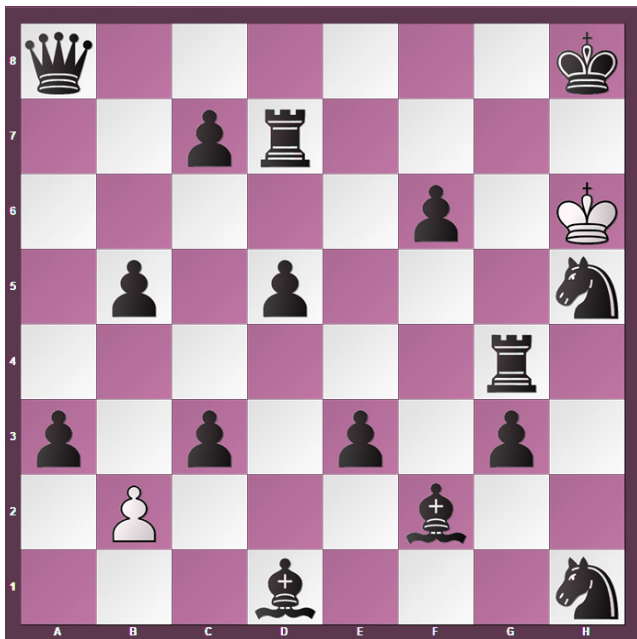
3. ... d4+ 4. Ke2 [zugzwang]

4. ... d3+ 5. Ke1 [zugzwang]

5. ... d2+ 6. Kf1 [zugzwang] ... **d1=Q#**

Continuous forced pawn checks permit to bring white King safely on 1°st rank, avoiding Rf8#, then the white Rook f2 will auto-block and permit mate.

FEN: k7/2p5/P1NP4/5Kp1/6p1/6P1/5RP1/8



2+16

ser=19

Series-stalemate in 19

(C+)

Composed by: **Daniele Gatti**

NUMBER 6

Published on [BEST PROBLEMS \(2018\)](#)

1. axb3 2. a4 3. axb5 4. b6 5. b7 6. bxa8=S 7. Sxc7 8. Sxd5 9. Sxc3 10. Sxd1 11. Sxe3 12. Sxg4 13. Sxf2 14. Sxh1 15. Sxg3 16. Sxh5 17. Sxf6 18. Sxd7 **19. Sf6 =**

FEN: q6k/2pr4/5p1K/1p1p3n/6r1/p1p1p1p1/1P3b2/3b3n