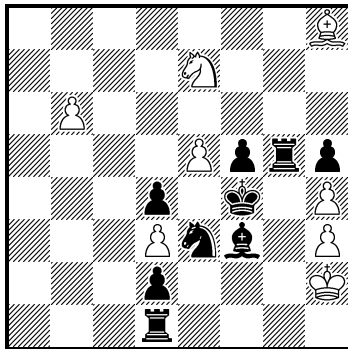


1 **Ralf Krätschmer**

*JT be-64 2018*

4. Preis



hs#3.5

(8+9)

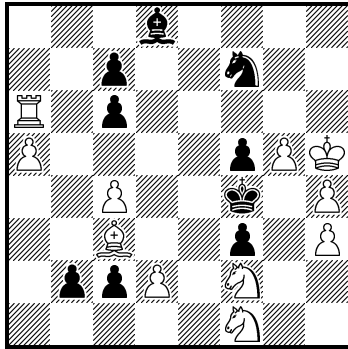
b) wPb6->f2

C+

a) 1. ... Ba8 2. b7 Sg4+ 3. Kg2 B:b7 4. Sd5+ B:d5#

b) 1. ... Rg8 2. Bg7 Sf1+ 3. Kg1 R:g7 4. Sg6+ R:g6#

2 **Ralf Krätschmer**  
*feenschach 2017 Andernach*  
 TT Heft 224  
 2. Preis



#5 (11+9)  
 C+  
 Lost Pieces

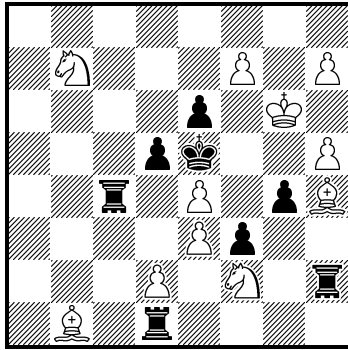
Lost Pieces means: After a move of white or black all pieces of the opposite side will be removed as part of the move from the board. (Be proving if the piece can escape from the attack a possible check isn't noted.)

1. Re6?
1. R:c6 too slow
1. Bd4? (-bPc6) too slow
1. Sd3+ (-bPc6) Ke4
2. Sf2+ Kf4
3. Re6 (threat Sd3#) c1=S
4. g6 (-bSf7) (threat Be5#) not 4. Kg6 (-bPf5 -bSf7 then b1=Q/B+!
- not 4. Bd4? c5! 5. Be3+ Sd3 (-wBe3)
4. ....Bf6
5. R:f6# (-bPf5)

### 3 Ralf Krätschmer

*JT Hans Peter Rehm 75 2018*

2. ehrende Erwähnung



s#6 (11+8)

C+

black Empress c4 h2

1.S:g4+? Em:g4+ but 2.Bg5!

1.Bg3? and black is mate

1.Sd3+? K:e4 2.Sf2+ Ke5 3.Bg3+ Emf4+

1. Sd3+ K:e4

2. Sd6+ Em:d6

3. Sf2+ Ke5

4. d4+ R:d4

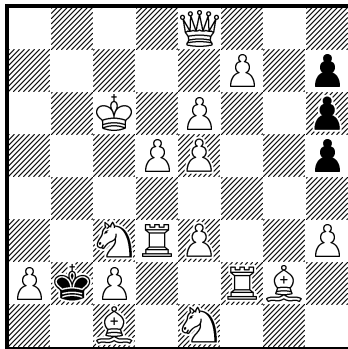
5. Bg3+ Rf4

6. S:g4+ Em:g4#

#### 4 Ralf Krätschmer

www.ifaybish.com 2016

2. Platz



ser-hs#90 (16+4)

C+

ExtinctionChess Circe

ExtinctionChess means that - any - piece is checked if it is the last of its kind. Thus the king is no more special, and can be captured like any other piece, even promoted to !

1.Kb2\*c1 2.Kc1-b2 3.Kb2-a3 4.Ka3-b4 5.Kb4-a5 6.Ka5-a6 7.Ka6-a7 8.Ka7-b8 9.Kb8-c8 10.Kc8-d8  
11.Kd8-e7 12.Ke7-f8 13.Kf8-g7 14.Kg7-g6 15.Kg6-g5 16.Kg5-h4 17.Kh4-g3 18.Kg3\*f2[+wRa1]  
19.Kf2-g3 20.Kg3-h4 21.Kh4-g5 22.Kg5-g6 23.Kg6-g7 24.Kg7-f8 25.Kf8-e7 26.Ke7-d8 27.Kd8-c8  
28.Kc8-b8 29.Kb8-a7 30.Ka7-a6 31.Ka6-a5 32.Ka5-b4 33.Kb4-a3 34.Ka3-b2 35.Kb2\*a1 36.Ka1-b2  
37.Kb2-a3 38.Ka3-b4 39.Kb4-a5 40.Ka5-a6 41.Ka6-a7 42.Ka7-b8 43.Kb8-c8 44.Kc8-d8 45.Kd8-e7  
46.Ke7-f8 47.Kf8-g7 48.Kg7-g6 49.Kg6-g5 50.Kg5-h4 51.Kh4-g3 52.Kg3-f2 53.Kf2\*e1[+wSg1]  
54.Ke1-f2 55.Kf2-g3 56.Kg3-h4 57.Kh4-g5 58.Kg5-g6 59.Kg6-g7 60.Kg7-f8 61.Kf8-e7 62.Ke7-d8  
63.Kd8-c8 64.Kc8-b8 65.Kb8-a7 66.Ka7-a6 67.Ka6-a5 68.Ka5-b4 69.Kb4-a3 70.Ka3-b2 71.Kb2\*c2  
72.Kc2\*d3[+wRh1] 73.Kd3\*c3 74.Kc3-b4 75.Kb4-a5 76.Ka5-a6 77.Ka6-a7 78.Ka7-b8 79.Kb8-c8  
80.Kc8-d8 81.Kd8-e7 82.Ke7-f8 83.Kf8-g7 84.Kg7-g6 85.Kg6-g5 86.Kg5-h4 87.Kh4-g3 88.h5-h4  
89.h6-h5 90.h7-h6 Bg2-f1 91.Kg3-f2 #

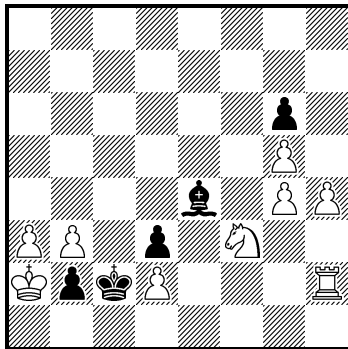
exact source <http://ifaybish.com/blog/chess-composition/tt8-series-tournament/results/>

5 **Ralf Krätschmer**

*Superproblem TT-167*

10.VII.2016

3. ehrende Erwähnung



hs#3..5 (9+5)

b) bRe4

C+

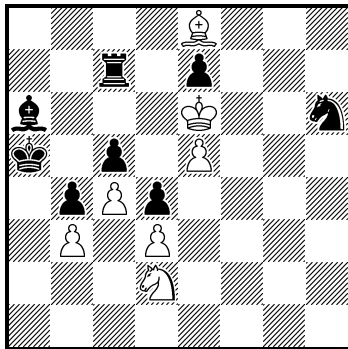
- a) 1.... Bd5
- 2. Rh1 Bg8
- 3. Rb1 Bh7
- 4. b4 Bg8#

- b) 1.... Re1
- 2. Se5 Rb1
- 3. Sc4 Kc1
- 4. Se3 Ra1#

6 **Ralf Krätschmer**

*Tzuica Tourney 2016*

2. Lob



hs#6

(7+8)

C+

1. Bc6 B:c4+
2. Bd5 B:b3
3. Bc4 Bc2
4. Bb5 B:d3
5. Be8 Ba6
6. Sc4+ B:c4#