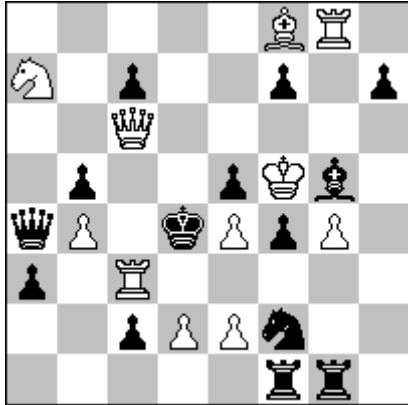


# 1. WCCI 2016 – 2018 Section F: SELFMATES

## Waldemar TURA (Polska) S2674 The Problemist XI 2017



s#3

(11+14)

Popeye Windows-32Bit v4.77

1.Q:c7? ~ 2.S:b5+ Q:b5 3.Q:e5+ :e5#  
1...Qb3 2.Qd6+ Qd5 3.Q:e5+ Q:e5#  
1...Q:a7 2.Bc5+ Q:c5 3.Q:e5+ Q:e5#  
1...Sd3 2.Qd8+ B:d8 3.e3+ f:e3#  
1...S:g4 2.Q:e5+ S:e5 3.e3+ f:e3#  
(2.Qd8+? B:d8 3.e3+ S:e3+!)  
1...Bf6 2.Rd3+ S:d3 3.e3+ f:e3#  
(2.Rc4+? b:c4 3.Qd7+ Q:d7+ 4.K:f6?)  
1...f6 2.Rc4+ b:c4 3.Qd7+ Q:d7#  
(2.Rd3+? S:d3 3.e3+ f:e3+ 4.Ke6?) 1...S:e4!  
  
1.Bg7! ~ 2.S:b5+ Q:b5 3.B:e5+ Q:e5#  
1...Qb3 2.Qd5+ Q:d5 3.B:e5+ Q:e5#  
1...Q:a7 2.Qc5+ Q:c5 3.B:e5+ Q:e5#  
1...Sd3 2.Rd8+ B:d8 3.e3+ f:e3#  
1...S:g4 2.B:e5+ S:e5 3.e3+ f:e3#  
(2.Rd8+? B:d8 3.e3+ S:e3+!)  
1...Bf6 2.Rd3+ S:d3 3.e3+ f:e3#  
(2.Rc4+? b:c4 3.Qd7+ Q:d7+ 4.K:f6?)  
1...f6 2.Rc4+ b:c4 3.Qd7+ Q:d7#  
(2.Rd3+? S:d3 3.e3+ f:e3+ 4.Ke6?)

solution finished. Time = 3.296 s

5BR1/N1p2p1p/2Q5/1p2pKb1/qP1kPpP1/p1R  
5/2pPPn2/5rr1

C+

New selfmate theme: the multiple attack  
on the free field of white K

Adabashev in 2 faces:

I - white force the move of black Q on  
5th line and attack on free field g5 in 3rd  
[mating] move

II - corrected play of black S and attack  
on free field g5 in 2nd black move

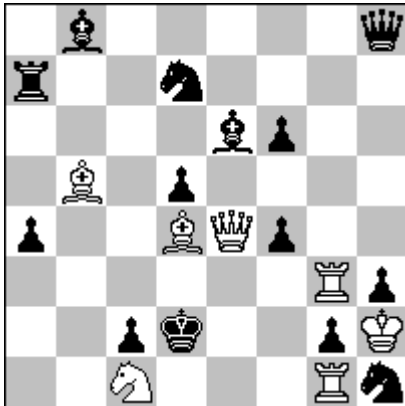
III - white sacrifices for the opening of  
black lines, blocages and specific  
selfmate dual avoidance [black give the  
free fields for white K] and attack on  
free field g5 in 1st black move

4 changes

Address e-mail: [waldt@poczta.fm](mailto:waldt@poczta.fm)

## 2. WCCI 2016 – 2018 Section F: SELFMATES

Waldemar TURA (Polska)  
17251 Die Schwalbe XII 2017



s#3

(7+14)

1b5q/r2n4/4bp2/1B1p4/p2BQp2/6Rp/2pk2  
pK/2N3Rn

C+

Popeye Windows-32Bit v4.79

1.Ra3! ~ 2.Sb3+ a:b3 3.Q:f4+ :f4#

1...Rc7 2.Qe3+ f:e3 3.Bc3+ R:c3#  
(2.Bc3+? R:c3 3.Q:f4+? Re3!)

1...Se5 2.Be3+ f:e3 3.Qd3+ S:d3#  
(2.Qd3+? S:d3 3.Be3+? K:e3!)

1...Sg3 2.Qe2+ S:e2 3.Be3+ f:e3#  
(2.Be3+? f:e3 3.Qe2?)

solution finished. Time = 0.625 s

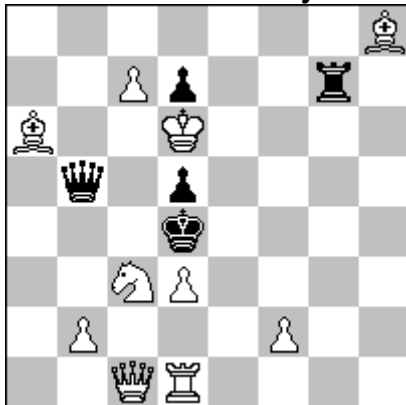
Theme Dresden 2017 six days tourney in three variants with dual avoidance

Address e-mail: [waldt@poczta.fm](mailto:waldt@poczta.fm)

### 3. WCCI 2016 – 2018 Section F: SELFMATES

Waldemar TURA (Polska)

2nd Prize *Vodka Tourney Ohrid 2018*



7B/2Pp2r1/B2K4/1q1p4/3k4/2NP4/1P3P2/2  
QR4

C+

s#3

(10+5)

Popeye Windows-32Bit v4.79

1...Q:b2 (Q~) 2.Sb5+ Q:b5 3.Qc5+ Q:c5#

1.Qg5! tempo

1...Q~ 2.Sb5+ Q:b5 3.Q:d5+ Q:d5#

1...Q:b2! 2.Se2+ Q:e2 3.Qe5+ Q:e5#

(2.Sb5+? Q:b5 3.Q:d5+ Kc3!)

1...Q:d3!! 2.Rd2! tempo Q:d2 3.Qf4+ Q:f4#

(2.Sb5+?; 2.Se2+? Ke4 3.Q:d5+ Q:d5+ 4.R:d5?)

solution finished. Time = 0.332 s

Warsaw theme

Tertiary Black Correction

Changes white continuations and mates after

1...Q:b2 2.Sb5+ Q:b5 3.Qc5+ Q:c5# - 2.Se2+ Q:e2 3.Qe5+ Q:e5#

and 1...Q~ ....3.Qc5+ Q:c5# - 3.Q:d5+ Q:d5#

Total 4 different mates by bQ and sacrifices by wQ

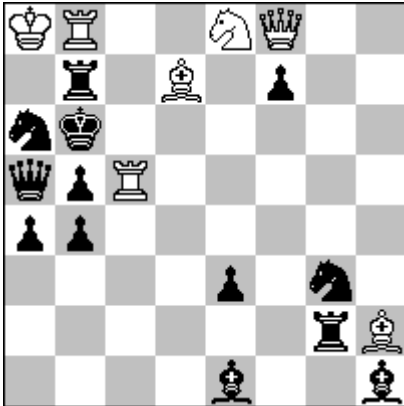
Address e-mail: [waldt@poczta.fm](mailto:waldt@poczta.fm)

#### 4. WCCI 2016 – 2018 Section F: SELFMATES

Waldemar TURA (Polska)

1st PR Wola Gułowska 2016

29 Wola Gułowska XI 2016



s#2

(7+13)

KR2NQ2/1r1B1p2/nk6/qpR5/pp6/4p1n1/6  
B/4b2b

C+

Popeye Windows-32Bit v4.59

1.Rc~c[c1.,c2.]? ~ 2.Qc5+ S:c5# 1....Bc3!

1.Rc4? b:c4! 1.Rcc8? R:b8+!

1.Rc~g[g5,h5]? 1...f5!

1.Rd5? ~ 2.Qc5+ S:c5#

1...Se4 2.Bc7+ S:c7# 1...Rc2!

1.Re5? ~ 2.Qc5+ S:c5#

1...Rc2 2.R:b7+ B:b7# 1...Se4!

1.Rf5! ~ 2.Qc5+ S:c5#

1...Rc2 2.R:b7+ B:b7#

1...Se4,:f5 2.Bc7+ S:c7#

solution finished. Time = 0.171 s

White correction

Theme Czestochowa: in one variant, white closes (or opens) the black line; in the second - black close (or open) the white line

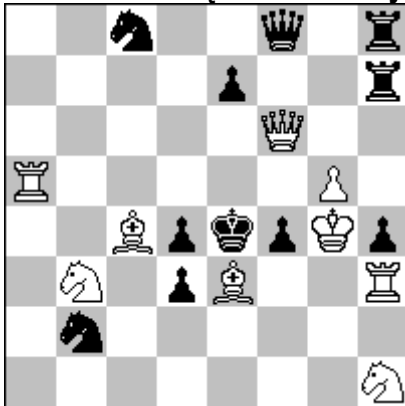
Address e-mail: [walddt@poczta.fm](mailto:walddt@poczta.fm)

## 5. WCCI 2010 – 2012 Section F: SELFMATES

Waldemar TURA (Polska)

1<sup>st</sup> Prize Polski Związek Szachowy 2016

1057 Polski Związek Szachowy 13 XII 2016



2n2q1r/4p2r/5Q2/R5P1/2BpkpKp/1N1pB2R/  
1n6/7N

C+

s#3

(9+11)

Popeye Windows-32Bit v4.69

1.Bd2, :f4? S:c4!

1.Bc1! ~ 2.B:d3+ S:d3 3.Sf2+ S:f2#

1...S:c4 2.Sd2+ S:d2 3.Q:f4+ Q:f4#

1...Sa4 2.Sc5+ S:c5 3.Qf5+ Q:f5#

1...f3 2.Sg3+ h:g3 3.Q:f3+ Q:f3#

solution finished. Time = 2.406 s

Sacrifices for closing the white lines in 3 variants

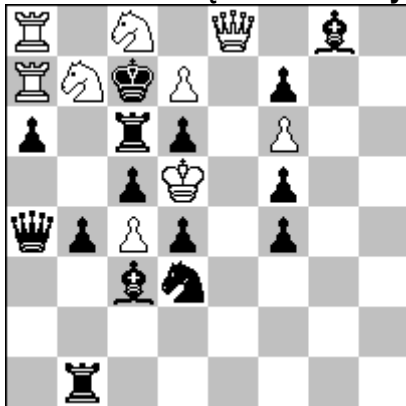
Bristol bi-color x 3

Address e-mail: [waldt@poczta.fm](mailto:waldt@poczta.fm)

## 6. WCCI 2010 – 2012 Section F: SELFMATES

Waldemar TURA (Polska)

1629 Polski Związek Szachowy 30 XI 2018



R1N1Q1b1/RNkP1p2/p1rp1P2/2pK1p2/qpPp  
1p2/2bn4/8/1r6

C+

s#3

(9+15)

Popeye Windows-32Bit v4.69

1.Q~e? Re1!

1.Qe1! ~ 2.d8B+ K:d7 3.Qe6+ f:e6#

1...K:d7 2.Qe6+ Kc7 3.Q:f7+ B:f7#

I

1...B:e1 2.S:d6+ K:d8 3.S:f7+ B:f7#

(2.S:c5+? K:d8 3.Se6+ f:e6+ 4.K:d4?)

1...S:e1 2.S:c5+ K:d8 3.Se6+ f:e6#

(2.S:d6+? K:d8 3.S:f7+ B:f7+ 4.Ke5?)

1...Se5 2.S:c5+ K:d8 3.Se6+ f:e6#

II

1...Se5/R:e1 2.S:c5/S:d6+

solution finished. Time = 1.578

White correction in 1<sup>st</sup> move

Key giving flight

Adabashev 2 x 2

I – bK play on 7. line and wQ enforces mats on e6 and f7 [threat and after 1..K:d7];

II - Siers battery, complicated dual avoidance: blacks and whites gives the fields around wK [after 1...S:e1/B:e1], bK play on d8 and wS enforces mats on e6 and f7.

Address e-mail: [waldt@poczta.fm](mailto:waldt@poczta.fm)