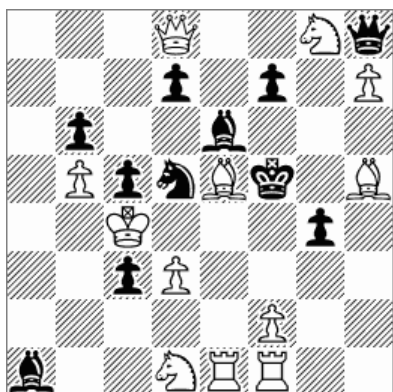


No. 1



Selfmate in 2 moves (12+11)

The Problemist, Nov. 2016, vol.25, No.12, p.494, №S2616

Stanislav VOKÁL, Slovakia, 04401 Drienovec 536

e-mail: stanislav.vokal@upjs.sk

Set:

1.- g3 2.fxg3 ep.+ Sf4x,

1. - Qf6 (Qxh7, Qxg8) 2.Qf6+ Sxf6x

Tries:

1.Se7+? – Kg5!

1.Se3+? – Kxe5!

How to follow? Try nice idea:

1.Qh4? ~ 2.Se7+! Sxe7x, 1. – Qf6 2.Qxf6+ Sxf6x but 1. – Qxe5!

1.Re4? ~ 2.Se3+! Sxe3x, 1. – Qf6 2.Qxf6+ Sxf6x but 1. – f6!

Solution is:

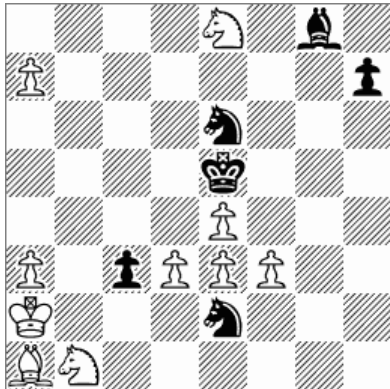
1.f4! ~ 2.Se7+ Sxe7x/2.Se3+ Sxe3x

1.- gxf3 ep. 2.Rxf3+! Sf4x

1.- Qxe5 2.fxe5+! Sf4x

“White’s f-file battery acts, with an e.p. defence to the wP key. Good battery play with Barnes theme. The double threat together with a pre-set battery restricts the play. 2 tries obstruct white guards, recurring as threats after critical moves thereof, but these latter tries fail to 2 more flight creations, separated by which squares the tries cover. A key guards the set flights for 2 new lines opening the amended rook battery – a rich solving experience.” – comment in The Problemist, May 2017, vol.26, No.3, p.103

No. 2



Selfmate in 2 moves (10+6)

Československý šach, 8/2017, p.220, №62

Stanislav VOKÁL, Slovakia, 04401 Drienovec 536

e-mail: stanislav.vokal@upjs.sk

Tries:

1.d4+ (A)? – S2xd4! (a)

1.f4+ (B)? – S2xf4! (b)

1.a8Q? ~ 2.Qa5+/2.Qb8+ Sc5x

but 1. – Se6~+! (2.Qd5+!)

Solution:

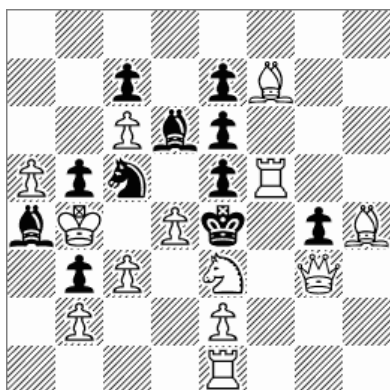
1.a8R! ~ 2.Ra5+ Sc5x

1. – S2f4 (b) 2.d4+ (A) S6xd4x

1. – S2d4 (a) 2.f4+ (B) S6xf4x

“Banny theme”

No. 3



Selfmate in 2 moves (13+11)

PAT A MAT, Sept. 2016, vol. 97, p.78, №235

Stanislav VOKÁL, Slovakia, 04401 Drienovec 536

e-mail: stanislav.vokal@upjs.sk

Tries:

1.Bxe6? ~ 2.d5 Sc5~x, but 1. – exd4!

1.Sd1!/1.Sf1!/1.Sxg4? t., 1. – exd4 2.Qd3+ Sxd3x,
but 1. – exf5! (2.Qd3+? – Kf4!)

1.Sg2? tempo, 1. – exf5 2.Qd3+ Sxd3x,
but 1. – Kd5! (2.Qg2+?)

Solution:

1.Sd5! tempo

1. – Kxd5 2.Qg2+ Se4x

1. – Kxf5 2.e4+ Sxe4x

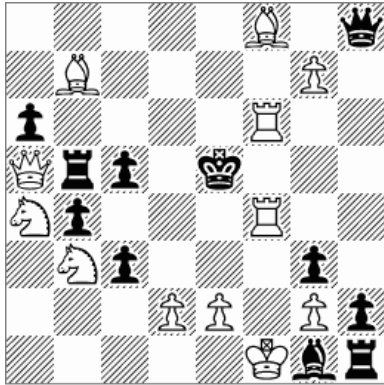
1. - exd4 2.Qd3+ Sxd3x

1. – exf5 2.Qd3+ Sxd3x

1. – exd5 2.Qd3+ Sxd3x

“Choosing the right field for the white S in the first white move is presented here. Almost arbitrary jump of the white S stagnate on 1 ... exf5!, so the knight must cover the field f4, which can be done in two ways. On the g2 blocks access to the white Q, but on the d5 will not get anything wrong. The first move gives two free fields for black king.”

No. 4



Selfmate in 2 moves (12+11)

Die Schwalbe, October 2016, Heft 281, Band XXXII, p.612
№16823

Stanislav VOKÁL, Slovakia, 04401 Drienovec 536
e-mail: stanislav.vokal@upjs.sk

Set:

1. – Rxb7 2.Qxc5+ Bxc5x

Try:

1.d4+?, but 1. – cxd4!

So, the pawn c5 should be captured! But how?

1.Bxc5? ~ 2.d4+/Bd4+ Bxd4x, but 1. – Qd8!

1. - Rxb7 2.Bb6+! Bc5x

1. – cxd2 2.Bd4+ Bxd4x

1.Sbxc5? ~ 2.d4+ Bxd4x, but 1. – cxd2!

1. - Rxb7 2.Sxb7+! Bc5x (S from b3 mates)

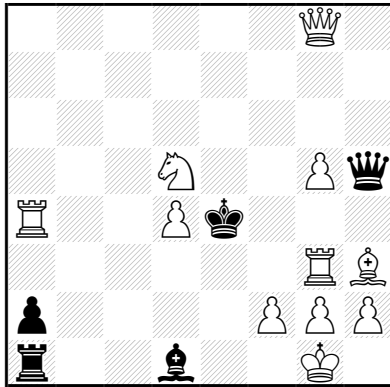
Solution is:

1.Saxc5! ~ 2.d4+ Bxd4x

1. - Rxb7 2.Sxb7+! Bc5x (S from a4 mates)

1. – cxd2 2.Qa1+ Bd4x

No. 5



Selfmate in 3 moves (11+5)

The Problemist, Jan. 2016, vol. 25, No.7, p.282, №S2576

Stanislav VOKÁL, Slovakia, 04401 Drienovec 536

e-mail: stanislav.vokal@upjs.sk

Solution:

1.Qa8! Rb1(Rc1) 2.Sf6+! (~) Kf4 3.Sxh5+ Bxh5x

1... Qg4 2.Se7+! Kf4 3.Rxg4+ Bxg4x

1... Qf3 2.Sf4+! Kf4 3.Qxf3+ Bxf3x

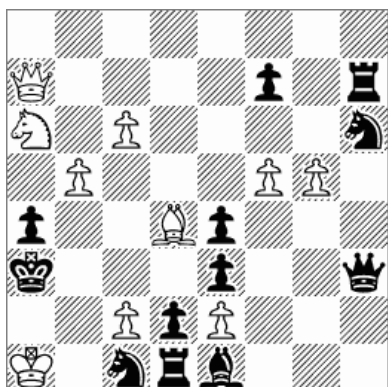
1... Qe2 2.Sc3+! Kf4 3.Sxe2+ Bxe2x

(1... Qxh3 2.Se7+ Kf4 3.Qf3+ Bxf3x, 1...Qe8 2.Sf6+ Kf4 3.Qf3+ Bxf3x)

„9 WCCT theme“

„Interesting bQ defences along the d1-h5 diagonal together with battery (Qa8-Sd5) play.“ – comments in *The Problemist*, July 2016,, vol.25, No.10, p. 412

No. 6



Selfmate in 3 moves (10+12)

The Problemist, May 2017, vol. 26, No.3, p.102, №S2643

Stanislav VOKÁL, Slovakia, 04401 Drienovec 536

e-mail: stanislav.vokal@upjs.sk

Tries:

1.Qd7? ~ 2.Qd5 and 3.Qa2+ Sxa2x, but 1. – Qxf5!

1.Bf6? ~ 2.Qd4 and 3.Qc3+ Sb3x, but 1. – Sxf5!

1. – Qg3 2.Be7+! Qd6 3.Qxe3+ Sb3x/Sd3x

1.Be5? ~ 2.Qd4 and 3.Qc3+ Sb3x, but 1. – Sxf5!

1. – Qg3 2.Qd4 Qxe5 3.Qb2+ Qxb2x

Solution:

1.Bg7! ~ 2.Qd4 and 3.Qc3+ Sb3x

1. – Sxf5! 2.Qxf7! and 3.Qa2+ Sxa2x

1. – Qg3! 2.Bf8+! Qd6 3.Qxe3+ Sb3x/Sd3x

(1. – Qxf5 2.Qxe3+)

«An intriguing puzzle for the white cleric – who defeats the bQ's best efforts (with bS help) to keep her counterpart hamstrung by enabling access to the two adjacent SW-NE diagonals. The white dominates 3 squares by checking.» - slovers comments in The Problemist, Nov. 2017, vol.26, No.6, p.235