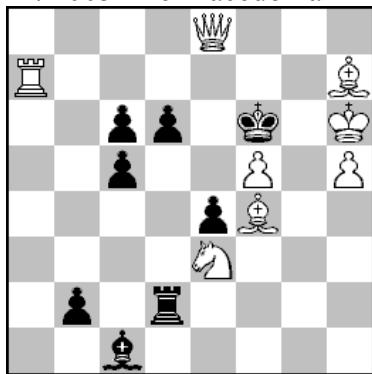


No.1 Živko Janevski, zivko@t-home.mk

Pr. 2005 The Macedonian Problemist, 2017, January-August, 2017



s#3

8+8

1.Ta6![2.Le5+ de5 3.Sd5+(A) Td5:#]

1.- T~ 2.Sd5+(B) cd5 3.Lg5+(C) Lg5:#

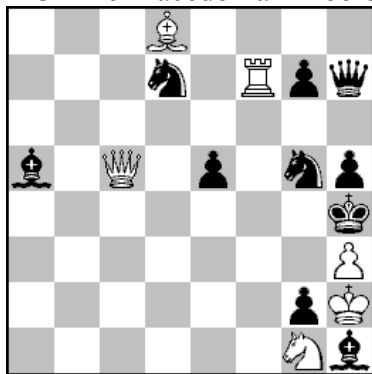
1.- Tg2! 2.Lg5+(C) Tg5: 3.Sg4+ Tg4:#

C+

Black Correction and changed function of the white moves - second moves becomes third.

No.2 Živko Janevski, zivko@t-home.mk

2131 The Macedonian Problemist 2018, January-August, 2018



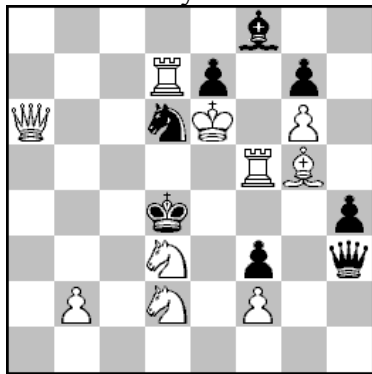
S#3

6+10

1.De3!(2.Tf4+ ef4 3.Dg3+ fg3#)
1.- Sf6 2.De1+ Le1: 3.Sf3+ Sf3:#
1.- e4 2.De4:+ De4: 3.Tf4+ Df4:#
1.- Df5 2.Lg5:+ Dg5: 3.Dg3+ Dg3:#
C+

No.3 Živko Janevski, zivko@t-home.mk

3.Com Andrey Selivanov 50 JT 2017, October, 2017



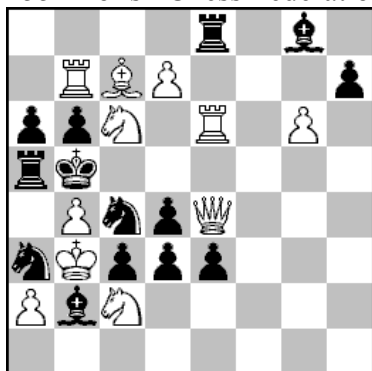
s#3

10+8

- 1.Se1!(2.Sef3:+ Df3: 3.Td5+ Dd5:#)
 - 1.- Dh2 2.Sb3+ Ke4 3.Te5+ De5:#,
 - 1.- Df1 2.Dc4+ Dc4: 3.Td5+ Dd5:#,
 - 1.Sc5?(2.Sf3:+ Df3: 3.Td5+ Dd5:#) Dh2!;
 - 1.Sc1? zz Dg4!,
 - 1.- Dh1,Dg2 2.Se2+ fe2+ 3.Td5+ Dd5:#;
- C+

Double direct unpin of the WtF5 and two thematic tries by the key piece wSd3.

No.4 Živko Janevski, zivko@t-home.mk
1551 Polish Chess Federation Ty 2018 (04.09.2018)



s#3

11+14

1.Sb8!(2.Teb6:+ Sb6:+ 3.Dd5+ Ld5:#)
1.- Te6: 2.De5+ Te5:,Se5: 3.Tb6+ Sb6:#
1.- Le6: 2.Dd5+ Ld5: 3.Tb6:+ Sb6:#
1.- Sd6 2.Df5+ Sf5: 3.Sd4:+ Sd4:#
1.- Se5 2.Dc6+ Sc6: 3.Sd4:+ Sd4:#
1.Sd8? Te6:!
C+

Two pairs of thematically connected variations with using of black masked battery mechanism.

No.5 Živko Janevski, zivko@t-home.mk

1.HM Andrey Selivanov 50 JT 2017, October, 2017



s#3

12+13

1.Sf~?(2.Dd6+ Ld6: 3.d5+ ed5#) Lc7:!

1.Sg8!(2.Dd6+ Ld6: 3.d5+ ed5#)

1.- L~ 2.Te6:+ fe6 3.d5+ ed5#,

1.- Lc7:! 2.Se7+ Kd6 3.e5+ Se5:#,

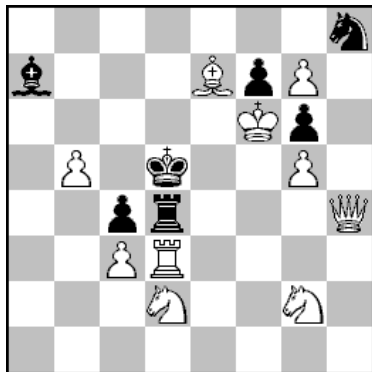
1.- Sc3 2.d5+ Sd5: 3.Dc5:+ Dc5:#;

C+

Combination of White Correction and Black Correction with using of white masked battery and white masked half-pin mechanisms and pin-mates.

No.6 Živko Janevski, zivko@t-home.mk

1963 The Macedonian Problemist 2016, September-December, 2016



S#3

10+7

* 1.- cd3 2.De4+ Te4: 3.Sf4+ Tf4:#

1.Dh2?[2.Td4:+ Ld4:+ 3.De5+ Le5:#] cd3!(x),Td3:!(y)

1.Dg3?[2.Td4:+ Ld4:+ 3.De5+ Le5:#] cd3!(x)

1.- Td3: 2.Df3+ Tf3:+ 3.Sf4+ Tf4:#

1.De1?[2.Td4:+ Ld4:+ 3.De5+Le5:#]

Td3:!(y)

1.Df4![2.Td4:+ Ld4:+ 3.De5+ Le5:#]

1.- cd3(x) 2.De4+ Te4: 3.Sf4: Tdf4:#

1.- Td3:(y) 2.Df3+ Tf3:+ 3.Sf4+ Tff4:#

A setting of Harkow theme with double self-unpin of BTd4
by capture of the white pinning piece on the same square.