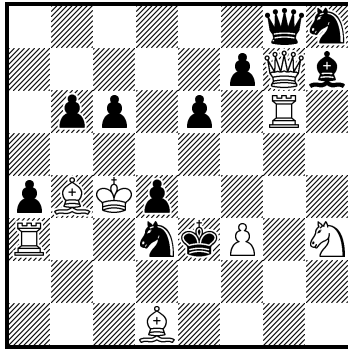


1 Ralf Krätschmer

6-days Composing Tourney

WCCC 2017

2. Preis



s#2

(8+11)

1.Tg6 any? [2.T:d3+ L:d3#]

1.- Sg6 2.De5+ Se5# but 1.-f5!

1.Tf6? 2.T:d3+ L:d3#] but 1.- Sg6!

1.Th6! 2.T:d3+ L:d3#]

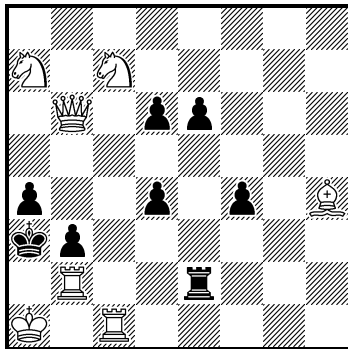
1.-Sg6 2.De5+ Se5#

1.-f5 2.T:e6+ D:e6#

2 **Ralf Krätschmer**

Concours moscovite 2017

Lob



s#8

(7+8)

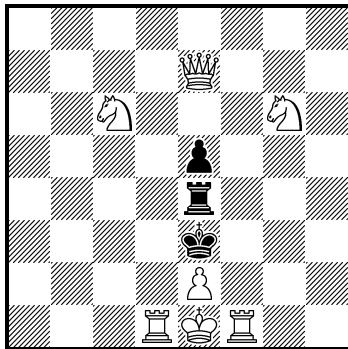
1. Sab5+ Kb4
2. Sd5+ e:d5
3. S:d6+ Ka3
4. Sc4+ d:c4
5. Le7+ T:e7
6. Ta2+ b:a2
7. Tc3+ d:c3
8. Db2+ c:b2#

3 **Ralf Krätschmer**

Superproblem TT-161

23.III.2016

Preis 1. Platz



s#6

(7+3)

1. Td5 Ta4
2. T:e5+ Te4
3. Tf4 T:e5
4. Da7+ Tc5
5. Da3+ Tc3
6. Dc1+ T:c1#

The choice of 1 st move became clear only after

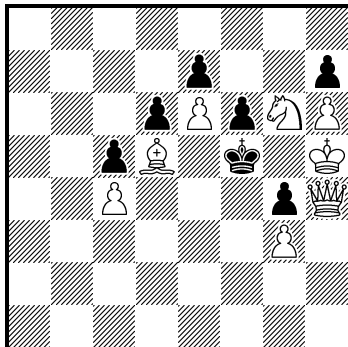
4.Qa7+! If 1.Rf5? then wQ has not the same long move (as in solution)

4 **Ralf Krätschmer**

Superproblem TT-163

11.V.2016

1. ehrende Erwähnung



s#6*

(8+7)

1... h:g6#

1. S:e7+ Ke5

2. Sc6+ Kf5

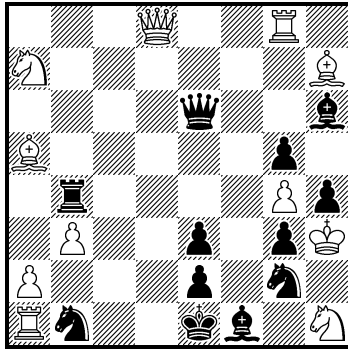
3. Dg5 f:g5

4. e7 Kf6

5. e8=D Kf5

6. Dg6+ h:g6#

5 **Ralf Krätschmer**
Sinfonie Scacchistica 2016
 1. Platz



s#3

(11+12)

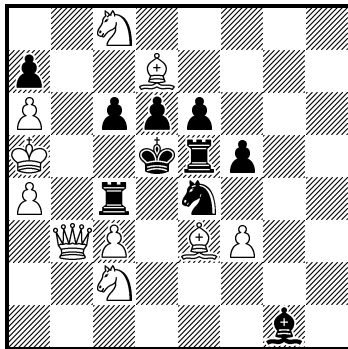
- 1.Dd3 [2.D:b1+ Kd2 3.De1+ S:e1#
 1.- D:b3 2.a:b3 Lg7 3.T:g7 Sf4#
 . 2.- Lf8 3.T:f8 Sf4#
 1- Dc4 2.b:c4 Lg7 3.T:g7 Sf4#
 . 2.- Lf8 3.T:f8 Sf4#
 1- De4 2.L:e4 Lg7 3.T:g7 Sf4#
 . 2.- Lf8 3.T:f8 Sf4#
 1- Dd5 2.D:d5 Lg7 3.T:g7 Sf4#
 . 2.- Lf8 3.T:f8 Sf4#
 1- Df5 2.L:f5 Lg7 3.T:g7 Sf4#
 . 2.- Lf8 3.T:f8 Sf4#
 1- Dc6 2.S:c6 Lg7 3.T:g7 Sf4#
 . 2.- Lf8 3.T:f8 Sf4#
 1- Dd6 2.D:d6 Lg7 3.T:g7 Sf4#
 . 2.- Lf8 3.T:f8 Sf4#
 1- Dg6 2.L:g6 Lg7 3.T:g7 Sf4#
 . 2.- Lf8 3.T:f8 Sf4#
 1- Dd7 2.D:d7 Lg7 3.T:g7 Sf4#
 . 2.- Lf8 3.T:f8 Sf4#
 1- Dc8 2.S:c8 Lg7 3.T:g7 Sf4#
 . 2.- Lf8 3.T:f8 Sf4#

6 Ralf Krätschmer

Belgrade Ukrainian Folk

Crafts 2016

2. Lob



s#3

(10+10)

1.Lc5! [2.Se7+ K:c5 3. Db6 a:b6#]

1.-d:c5 2.Sb4+ c:b4 3.D:c4 K:c4#

1.-S:c5 2.L:c6+ K:c6 3.Db7 S:b7#

1.-L:c5 2.Se3+ L:e3 3.D:c4 K:c4#

1.-K:c5? 2.D:c4+ K:c4#