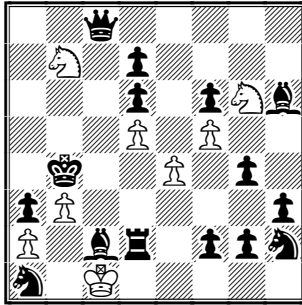


WCCI - 2016 – 2018 - H #

I Ricardo de Mattos Vieira
Brazil



a) 1.T:d5+ Sf4 2.Ld3+ Kd1 3.Lb5+ S:d5 #

b) 1.L:e4+ Sc5 2.Td3+ Kb1 3.Tf3+ S:e4 #

H # 3 b) bKb4 →g3

10TH WCCT
SECTION E - HELPMATES

Theme: In each line of play of a helpmate in 3 moves, Black gives a battery check to the white king. At least two lines of play are required. Set play, multi-solutions and twins are allowed, but not duplex, Polish-type twins (all pieces change color) or zero-positions.

E102

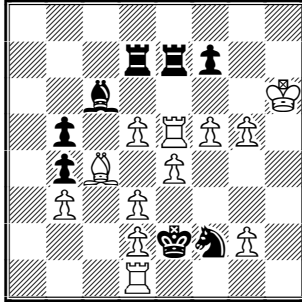
3RD – 4TH PLACE - 8.8 points

3x2 battery checks, critical black Grimshaw, WP annihilation by black, self-blocks, unpins by WK, ODT. Good WK tempo. (IND)

Thematic task, it is impossible to show more of the theme. Two batteries are prepared; two other appear in the course of solutions after interference on d3. The price to pay is difficult position with twinning by moving the BK to the trap prepared at g3. (SVK)

WCCI - 2016 – 2018 - H #

II Ricardo de Mattos Vieira
Brazil



a) 1.T:e5 d6 2.L:e4 Ld5
3.L:d3 Lf3 #

b) 1.b:c4 d:c6 2.T:d3 Td5
4.Te3 Td2 #

H # 3

b) -wPd2

6TH FIDE WORLD CUP IN COMPOSING

SECTION E - HELPMATES

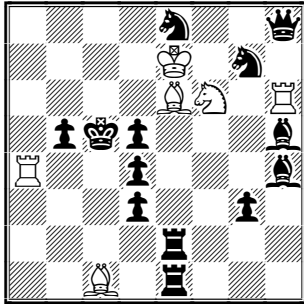
5TH COMMENDATION

Judge: Christopher Jones

“It is very nice that the motivation for B1 is to counteract a pin that otherwise would prevent B3. But I felt that the presence of the Sf2 in the mating position of (b) was a significant detraction. Yet again there is a subjective element in how much weight one attaches to this consideration.”

WCCI - 2016 – 2018 - H #

III Ricardo de Mattos Vieira
Brazil



H # 2 b) bKc5 ↔ bPb5

a) 1.S:e6 Le3 2.Sg5 Sd7 #

b) 1.S:f6 Lg5 2.Se4 Ld7 #

WCCC – 2018 – INTERNET COMPOSING TOURNEY

Section A: H # 2

Theme: Black in its first move captures different white piece in at least two phases (solutions or twins).

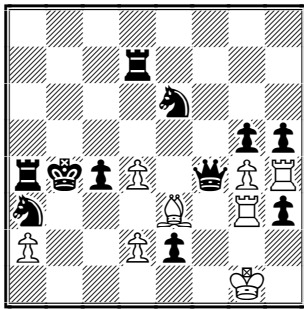
2ND HONORABLE MENTION

Judge: Nikola Stolev

“Reciprocal captures of the white mating L/S, with an unpinning motif.”

WCCI - 2016 – 2018 - H #

IV Ricardo de Mattos Vieira
Brazil



H # 2,5 b) wPd2 – e3

a) 1.... d5 2.D:g4 Lb6 3.Df5 Tb3 #

b) 1.... g:h5 2.D:e4 T:g5 3.Dd6 Ld2 #

ZORAN GAVRILOVSKI 50 JT 2018

H # 2.5 – n

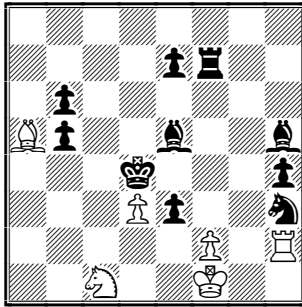
3RD HONORABLE MENTION

Judge: Hans Gruber

“The fourth rank is opened by active white moves and by capture and unpin & vacation (but to which square?) of the black queen. Bishop and rook exchange their functions.”

WCCI - 2016 – 2018 - H #

V Ricardo de Mattos Vieira
Brazil



1.... f3 2.L:f3?
2.Sf4! Tc2? 3.Sd5 L:b6?
2.... Td2! 3.Sd5 Sb3 #

1.... f4 2.S:f4?
2.Lf3! Td2? 3.Ld5 Sb3?
2.... Tc2! 3.Ld5 L:b6 #

H # 2.5 2.1.1.1.1.

ZORAN GAVRILOVSKI 50 JT 2018

H # 2.5 – n

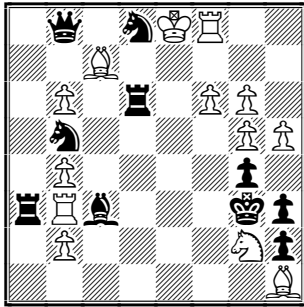
COMMENDATION

Judge: Hans Gruber

“Dual avoidance often appears artificial, but this presentation of black and white dual avoidance helps everybody not to miss the theme.”

WCCI - 2016 – 2018 - H #

VI Ricardo de Mattos Vieira
Brazil



1... Se3 2.L:f6 Td3 3.Lc3 Sg2 #

1... Sf4 2.T:f6 Le5 3.Td6 Sg2 #

H # 2.5 2.1.1.1.1.

During each solution:

- a pin line becomes a battery line;
- the black pinned piece becomes an interfering piece;
- after moving along the thematic line, the pinning white piece becomes the rear piece of the battery;
- the unpinning white piece becomes the front piece of the firing battery.

SUPERPROBLEM - QUICK COMPOSING TT 203

Stipulation: H#2-n

Theme: It is required to compose a helpmate in which:

- on first move of solution White piece (not Pawn) moves from a square X to a square Y,
- on last move the same piece returns from the square Y to the square X;
- on first move of solution Black piece (not Pawn) moves from a square x' to a square y',
- on last move the same piece returns from the square y' to the square x'.

1ST PRIZE

Judge: Christer Jonsson

“A great surprise! The black pinned pieces Lc3/Td6 becomes interfering pieces after White moves from Tb3 and Lc7.”