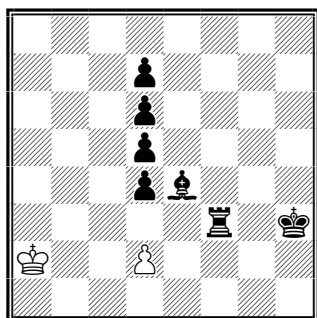


# №1 WCCI 2016-2018 SECTION E

№1 Vladimir Pankov  
E306 SuperProblem 27-01-2016  
1-st Honorable Mention



**h#7** 2+7  
1.2.1. ... C+  
8/3p4/3p4/3p4/3p4b3/5r1k/K2P4/8

**Solution:**

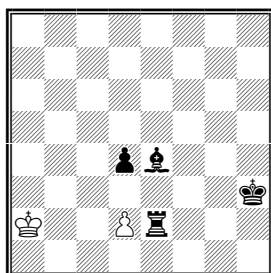
- a) 1.Re3 d3 2.Rg3(a) de 3.d3 e5 4.d2 e6 5.d1**B** e7 6.**B**f3 e8Q 7.**B**g2(**b**) Qh5 #  
b) 1.Re3 de 2.Bg2(**b**) e4 3.d3 e5 4.d2 e6 5.d1**R** e7 6.**R**d3 e8Q 7.**R**g3(**a**) Qh5 #

**Content:**

Exchanges: function of 1-st move (tempo-sacrifice), function BR and BB (block-sacrifice or theme Chumakov) and pieces of block (initial-promotion). Minor promotions with phoenix of BB and of BR, excelsior of WP, model absolute echo-mates, minimal problem.

Absolute echo-mates (echo-stalemates) are mates (stalemates), which have the same position, but different pieces have same name. This are either pieces from pair rooks, bishops, knights, or existing pieces and promotions of pawns, or promotions from different pawns.

Vladimir Pankov (version)  
SuperProblem 28-12-2018

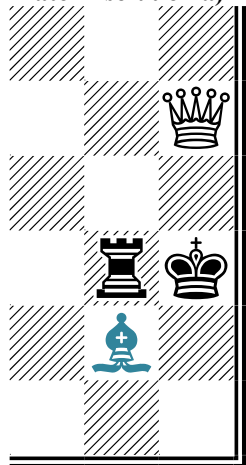


**h#7** 2+4  
1.2.1. ... C+  
8/8/8/8/3p4b3/5r1k/K2P4/8

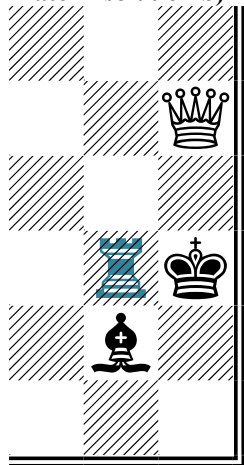
Unchanged solution; 1.Re3 (?? – sacrifice), etc.

In the form Onitui 1-st move must appear different for other partial solution to the problem. Then it will be bright and part of the content of the problem. This shows the comparison of the problem and its version.

Mate in solution a)



Mate in solution b)



**Absolute echo-mates**

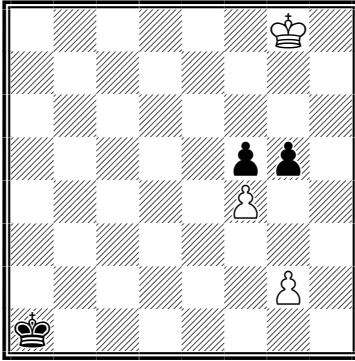
The blue color shows the pieces of promoted from pawn.

Панков Владимир Александрович (Vladimir Pankov)

Email: [vlad.pan.mpr@yandex.ru](mailto:vlad.pan.mpr@yandex.ru)

## №2 WCCI 2016-2018 SECTION E

№2 Vladimir Pankov  
E532 SuperProblem 02-11-2017



**h#5.5 3+3**  
**1.2.1. ... C+**  
6K1/8/8/5pp1/5P2/8/6P1/k7

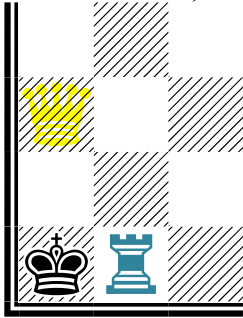
### Solution:

- a) 1. ... g4 2.fg f5 3.g3 f6 4.g2 f7 5.g1R f8Q 6.Rb1 Qa3 #  
b) 1. ... g4 2.gf gf 3.f3 f6 4.f2 f7 5.f1R f8Q 6.Rb1 Qa3 #

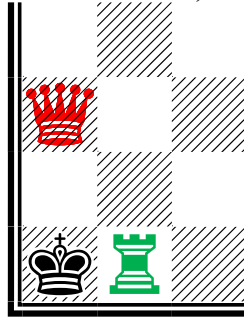
### Content:

Exchange functions of 1-st move (sacrifice – breakthrough), Zilahi, theme Chumakov, promotions (WQQ, BRR), play white pawns on the same squares, a setting double self-block on the same square BR of promotions from different pawns, excelsior of WP, model absolute echo-mates, Miniature.

Mate in solution a)



Mate in solution b)



### Absolute echo-mates

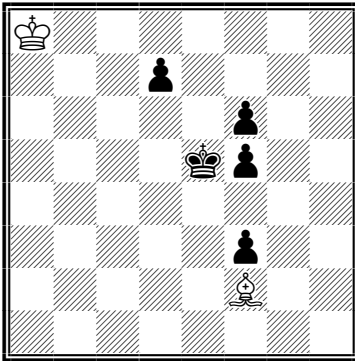
- Yellow – queen from pawn f4.
- Red – queen from pawn g2.
- Blue – rook from pawn f5.
- Green – rook from pawn g5.

Панков Владимир Александрович (Vladimir Pankov)

Email: [vlad.pan.mpr@yandex.ru](mailto:vlad.pan.mpr@yandex.ru)

## №3 WCCI 2016-2018 SECTION E

№3 Vladimir Pankov  
№756 KoBulChess 07-09-2016



**h#6.5 2+5**

**0.1.1. ...**

**K7/3p4/5p2/4kp2/8/5p2/5B2/8**

**Solution:**

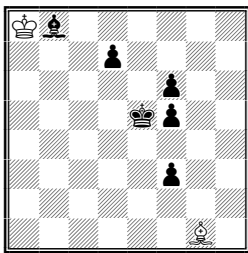
**1. ... Ba7 2.f2 Kb7 3.f1B Kb6 4.Ba6 Kc5 5.Bc8 Kc4  
6.d5 + Kd3 7.Be6 Bb8 #**

**Content:**

**Minor promotion (BB), ambush (BB), two black active self-block (BP, BB), Staircase theme (WK: a8-b7-b6-c5-c4-d3), anti-critical moves (WB, BB) ideal mate. Minimal. Miniature.**

The next version helps to explain the content of the problem

Vladimir Pankov (Version)  
KoBulChess 09-09-2016



**h#6.5 2+6**

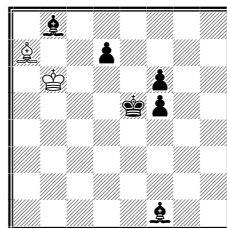
**0.2.1. ...**

**Kb6/3p4/5p2/4kp2/8/5p2/8/6B1**

**Solution:**

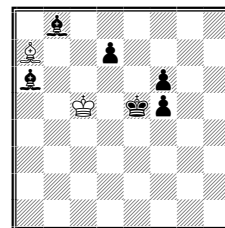
**1...Ba7 2.f2 Kb7 3.f1B Kb6 4.Ba6 Kc5 5.Bc8 Kc4 6.d5+ Kd3 7.Be6 B:b8#  
1...Kb7 2.f2 Kb6 3.f1B Kc5 4.Bg2 Kc4 5.Bd5+ Kd3 6.Be6 Ba7 7.d5 B”b8#**

**Critical position A-1**



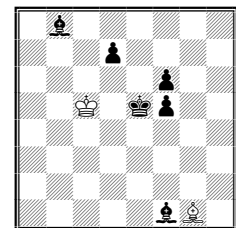
**4.Ba6!**

**Critical position B-1**



**5.Bc8!**

**Critical position B-2**



**4.Bg2!**

**c4 – critical square. Miss WK on this square one can only in position B, removing the defense of BB this square. Therefore, in position A 4.Ba6! the only move, and Wb1-a6-c8 anti-critical maneuver.**

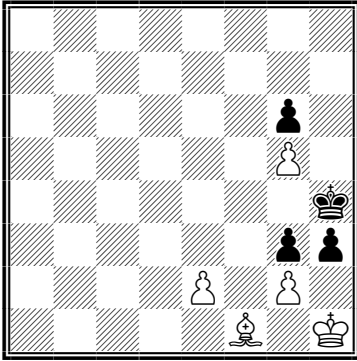
**Move 1.Ba7 regarding move 3.Kb6 – anti-critical move.**

**Панков Владимир Александрович (Vladimir Pankov)**

**Email: [vlad.pan.mpr@vandex.ru](mailto:vlad.pan.mpr@vandex.ru)**

## №4 WCCI 2016-2018 SECTION E

№4 Vladimir Pankov  
E315 SuperProblem 12-02-2016



**h#5 5+4**

**2.1.1. ... C+**

**8/8/6p1/6P1/7k/6pp/4P1P1/5B1K**

### Solution:

- a) **1.Kg4 gh + 2.Kh5 h4 3.g2 + Kh2 4.g1S Kg3 5.S:e2 + B:e2 #**  
b) **1.Kh5 gh 2.g2 + Kh2 3.g1R(g1S?) h4 4.Rg2 + Kh3 5.R:e2 B:e2 #**

### Content:

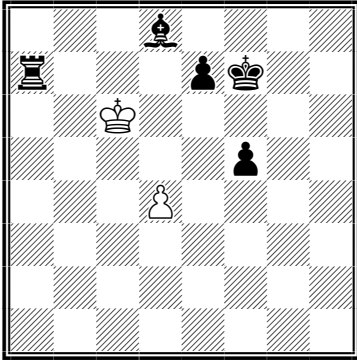
**Exchange of the tempoplay (tempomove-tempopromotion), two black active sacrifice for unblock of square for Wbishop, minor promotions (BS, BR), exchange of moves (W2-W3), many ways (BK)**

**Панков Владимир Александрович (Vladimir Pankov)**

**Email: [vlad.pan.mpr@yandex.ru](mailto:vlad.pan.mpr@yandex.ru)**

## №5 WCCI 2016-2018 SECTION E

№5 Vladimir Pankov  
E529 SuperProblem 31-10-2017



**h#4 2+5**  
**1.2.1. ... C+**  
3b4/r3pk2/2K5/5p5/3P4/8/8/8

### Solution:

a) 1.e5 d5 2.f6 d6 3.Re7 d7 4.Ke6 d8S #

b) 1.e5 de 2.Bf6 f6 3.Ke8 f7 + 4.Kd8 f8Q #

### Content:

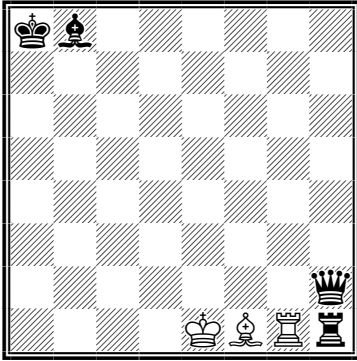
Exchange the function of 1-st move (block-sacrifice), change the functions of the second repetitive move (block-sacrifice), theme Chumakov (BP+BP) two black active sacrifice, promotions (WS,WQ), blocking piece replacement (BR-BP). Minimal, miniature.

Панков Владимир Александрович (Vladimir Pankov)

Email: [vlad.pan.mpr@yandex.ru](mailto:vlad.pan.mpr@yandex.ru)

## №6 WCCI 2016-2018 SECTION E

№6 Vladimir Pankov  
E543 SuperProblem 21-11-2017



**h#2 3+4**  
**b)Bb8→a7**  
**1.1.1.1 C+**  
kb6/8/8/8/8/8/7q/4KBRr

### Solution:

a) 1.Qh8 Rg7 2.Rh7 Bg2 #  
Content: Bristol (BQ-BR), Magnet (BQ-WR), Magnet (WR-BR), Hideaway (BQ,BR);

b) 1.Qb8 Rg8 2.Rh8 Bg2 #

Content:

Black self-block (BQ), white pin (WR-BQ), Corner-to-corner (BR), Hideaway (BR), Magnet (WR-BR), black unpin (WB-BR), Model pin-mate.

Problem-miniature/

Панков Владимир Александрович (Vladimir Pankov)

Email: [vlad.pan.mpr@yandex.ru](mailto:vlad.pan.mpr@yandex.ru)