

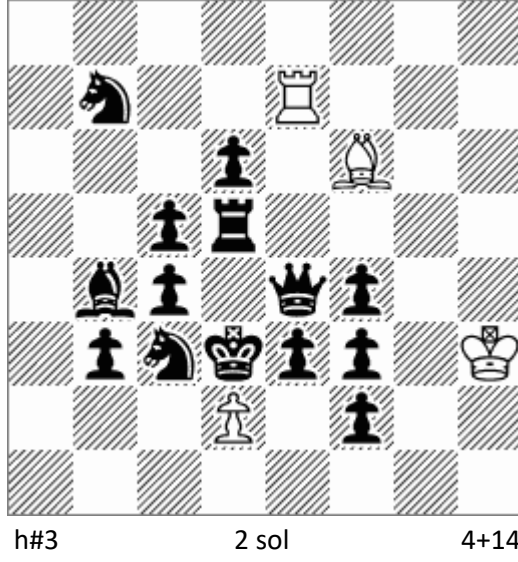
No.1

Umut SAYMAN (Türkiye Cumhuriyeti)

WCO-2018, Batumi

Dedicated by Dr. Ateş Ülker

3rd comm



Solution :

1.Re5 dxc3 2.Kxc3 Rxe5 3.Qc2 Rd5#

1.Qe5 dxe3 2.Kxe3 Bxe5 3.Rd3 Bxc3#

Umut Sayman (Kırkağaç / Manisa / TÜRKİYE)

umutsayman@gmail.com

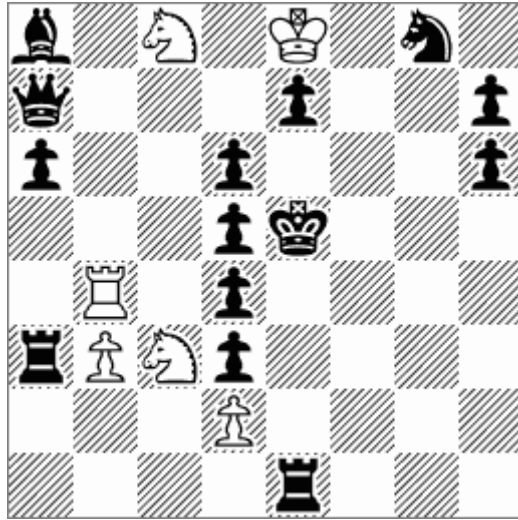
No.2

Umut SAYMAN (Türkiye Cumhuriyeti)

The Macedonian Problemist

Issue 57 (Sep.-Dec. 2018) no. 2235

Dedicated by Prof. Dr. Uluğ Nutku



h#3

6+14

Solution :

1. Qc5! Rxd4 2. Kxd4 Sxd6 3. e5 Sf5#

1. a5! Sxd5 2. Kxd5 Sxa7 3. Kc5 Rb5#

1. Ra4! Sxd6 2. Kxd6 Rb6 3. Kc5 Sxa4#

3-Fold Cyclic Zilahi, Model Mates, Chumakov

Umut Sayman (Kırkağaç / Manisa / TÜRKİYE)

umutsayman@gmail.com

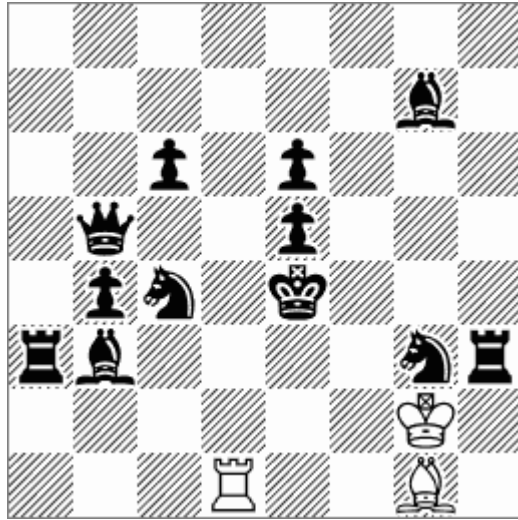
No.3

Umut SAYMAN (Türkiye Cumhuriyeti)

Die Schwalbe Dezember 2018

Heft 294-1 No:17646

Dedicated by Mubin Boysan



h#2½

b) Ke4<->Sc4

3+12

Solution :

a) 1. ... Bd4! 2. Kd5 Rd3 3. Se4 Be3#

b) 1. ... Rd4! 2. Kc5 Be3 3. Bc4 Rd3#

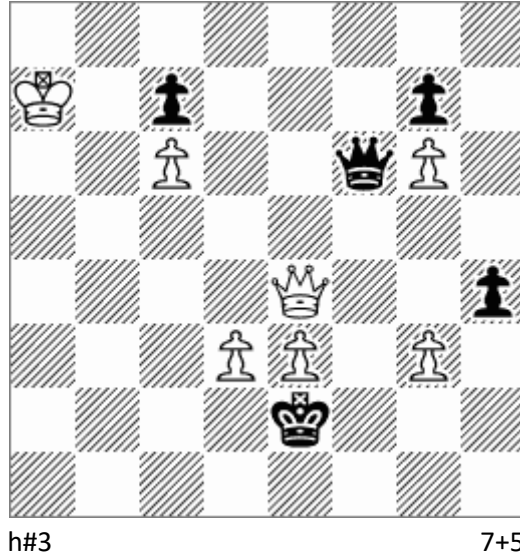
White Grimshaw

Umut Sayman (Kırkağaç / Manisa / TÜRKİYE)

umutsayman@gmail.com

No.4

Umut SAYMAN (Türkiye Cumhuriyeti)
Kobul Chess (Problem 953), 2018-12-28
Dedicated by Cavit Uzman



Solution :

1.Qf3 Qd5 2.Kxe3 gxh4 3.Kf4 Qg5#

1.Qc3 Qe5 2.Kxd3 Ka6 3.Kc4 Qb5#

Self-block, model mates, change of function white pawns, echo-mates, Meredith

Umut Sayman (Kırkağaç / Manisa / TÜRKİYE)
umutsayman@gmail.com