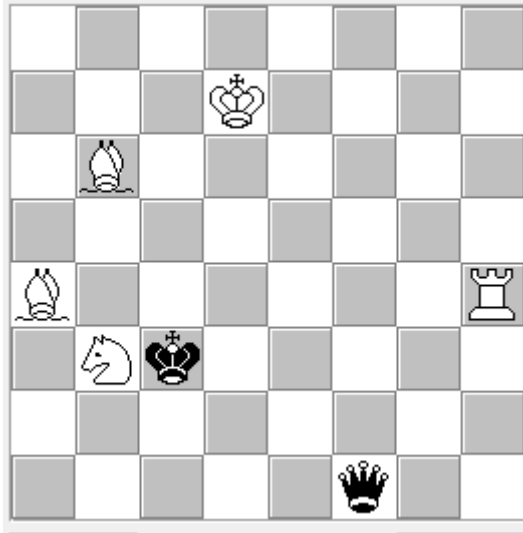


Entry No 1

Kıvanç Çefle

Strategems, July-September 2018

SG83, H2305



H#2, two solutions

(5+2)

8/3K4/1B6/8/B6R/1Nk5/8/5q2

Solutions:

1. Qa1 Bd4+ 2. Kb4 Bb2#

1. Qa6 Sd4 2. Kb4 Sb5#

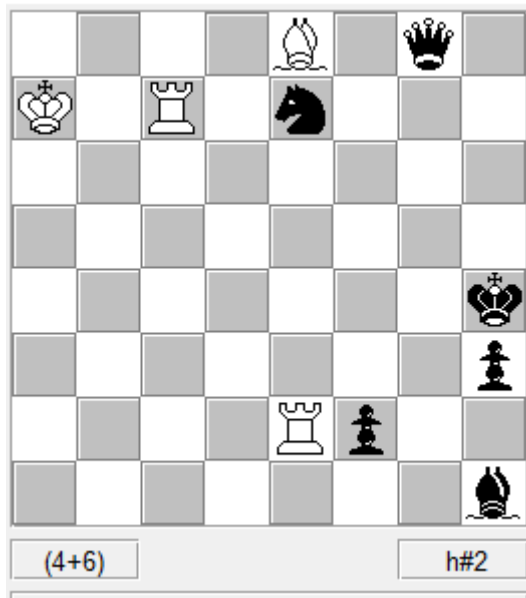
The black queen has to find the correct squares to hide away (only two in an open board). After the queen moves, White has to respond precisely. Model mates.

Entry No 2

Kıvanç Çefle

The Problemist, September 2018

Vol 26 No 11, H4162



H#2, two solutions

4B1q1/K1R1n3/8/8/7k/7p/4Rp2/7b

Solutions:

1. Sf5 Rg7 2. Be4 Rxe4#

1. Sc8+/c6+/d5/g6?

1. f1=S Rg2 2. Qc4 Rxc4#

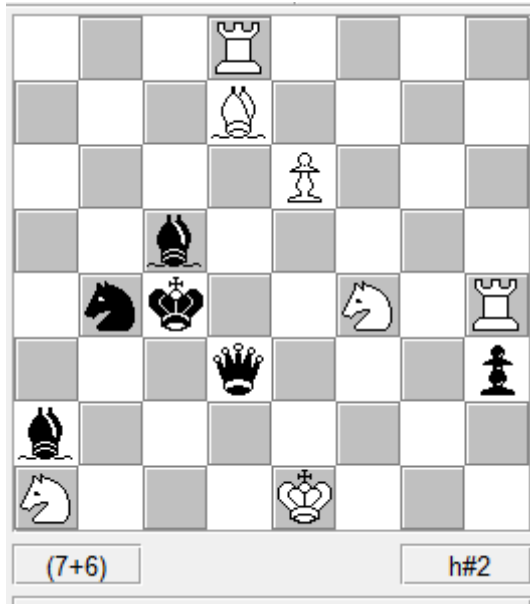
1. f1=B/R/Q?

Entry No 3

Kıvanç Çefle

Die Schwalbe, Oktober 2018

Heft 293, 17576



H#2, two solutions

3R4/3B4/4P3/2b5/1nk2N1R/3q3p/b7/N3K3

Solutions:

1. Sd5! Ra8 2. Kb4 Sxd5#

1. Sc6? Or 1. Sa6? interferes with white pieces, while 1. Sc2+ is a checking move.

1. Qe3+! Se2+ 2. Kd3 Bb5#

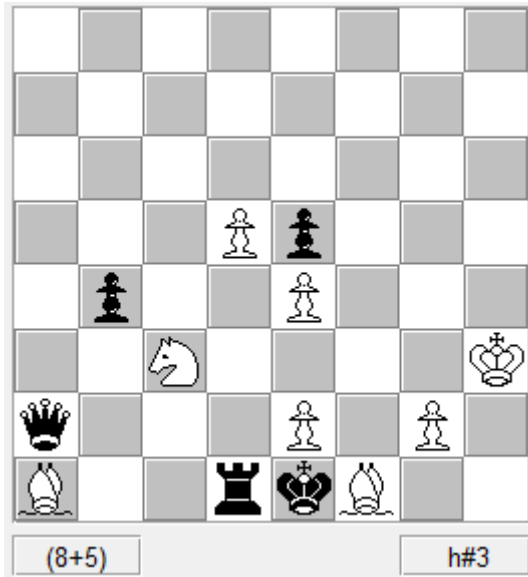
Again, black should choose carefully: 1. Qc3+ forces the white king to move. Or 1. Qh7? Sd5!? 2. Kd3 Bb5+ but now black has to interpose with the bishop (3. Bc4).

Entry No 4

Kıvanç Çefle

Pat a Mat, December 2018

Volume IX, No 106



H#3, three solutions

8/8/8/3Pp3/1p2P3/2N4K/q3P1P1/B2rkB2

Solutions:

1. Qxe2 Sxe2 2. Kxf1 Bd4 3. Re1 Sg3#

1. Qxd5 Sxd5 2. Rc1 Bc3+ 3. Kd1 Se3#

1. Qa7 Sxd1 2. Qf2 Se3 3. b3 Bc3#