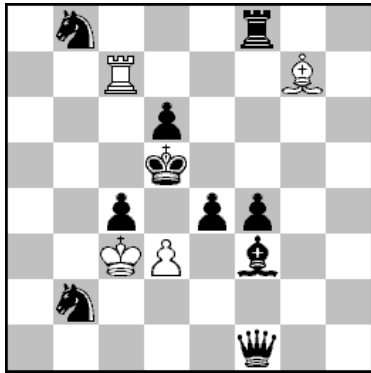


No.1 Živko Janevski, zivko@t-home.mk
Pr. H768 Problemist Ukraine 2018, January, 2018

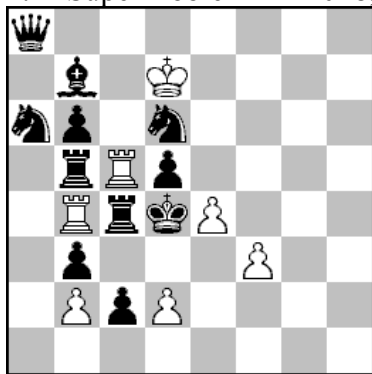


h#2 4.1.1.1. 4+10

1.Sc6 dc4+(A) 2.Kc5 Ld4#
1.Tf6 de4+(B) 2.Ke5 Te7#
1.Dh3 Kb2: 2.De6 dc4#(A)
1.Lg4 Tc4: 2.Le6 de4#(B)
C+

The Future Helpmate with 2 pairs of thematically connected solutions.

No.2 Živko Janevski, zivko@t-home.mk
 2.Pr SuperProblem TT 2018, 201 TT – (18.02.2018)

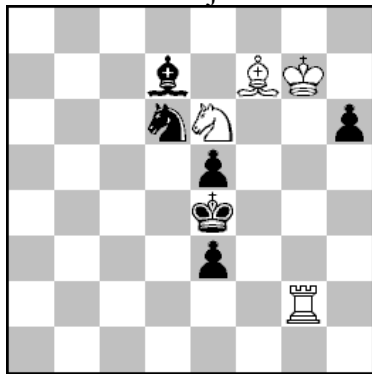


h#2 4.1.1.1. 7+11

1.Tcb4: Td5:+ 2.Kd4 d3#
 1.Kc5: Ta4 2.Tc3 d4#
 1.Sb4: Tcb5: 2.Sc6 Td5:#
 1.Tbc5: Tbb5: 2.Tc5 Td5:#
 C+

The Future Helpmate with 2 pairs of thematically connected solutions.
 The 1st pairs show Fox theme and mates by white pawn's (WPd2) double step (pawn-one-two play).
 Combination of Zilahi theme with white play on the same squares (b5 & d5) in W1 and W2 moves is presented in the 2nd pair.

No.3 Živko Janevski, zivko@t-home.mk
2.Pr 700 KoBulChess 2016, (31.01.2016)
Dedicated to Dijan Kostadinov

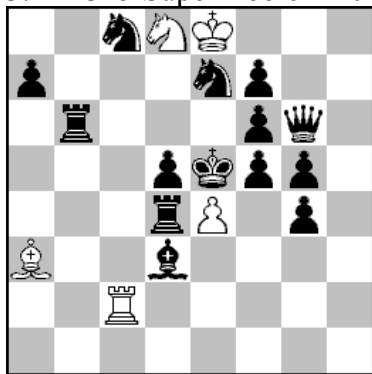


h#2 4.1.1.1. 4+6

- 1.Kd5 Tc2 2.e4 (2.Se4?) Tc5#
- 1.Kf5 Lh5 2.Se4 (2.e4?) Lg4#
- 1.Sb5 Tf2 2.Sd4 Sc5#
- 1.Lb5 Sd4 2.Ld3 Tg4#

The Future Helpmate with 2 pairs of thematically connected solutions and model mates in an elegant Gravure position without white pawns.

No.4 Živko Janevski, zivko@t-home.mk
 3.Pr E345 SuperProblem 2016, (27.04.2016)

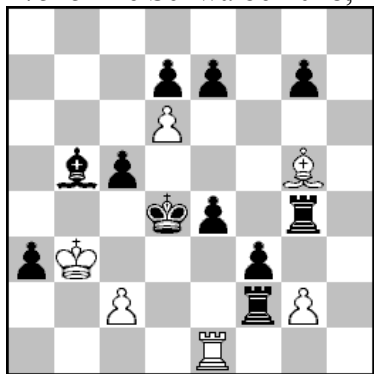


h#2 4.1.1.1. 5+14

- 1.Le4: Tc6 2.Sd6+ Ld6: #(A)
- 1.fe4! Ld6+(A) (Tc6?) 2.Kf5 Tf2#
- 1.de4! Le7: (Tc6?) 2.Kd5 Tc5#
- 1.Te4:!! Sf7: (Tc6?) 2.Kc4 Lc5#

Task of fourfold black self-blocks on the same square (d4) and black arrival correction on the same square (e4), probably shown for the 1st time!

No.5 Živko Janevski, zivko@t-home.mk
17515 Die Schwalbe 2018, August, 2018



h#2 6.1.1.1. 6+11

1.Td2 c3+ 2.Kd3 Te3#

1.Ld3 c4 2.e5 Le3#

1.Tc2: Lf4 2.Tc4 Td1#

1.Tg5: gf3 2.Td5 Te4:#

1.ed6 Ld2 2.d6-d5 Lc3#

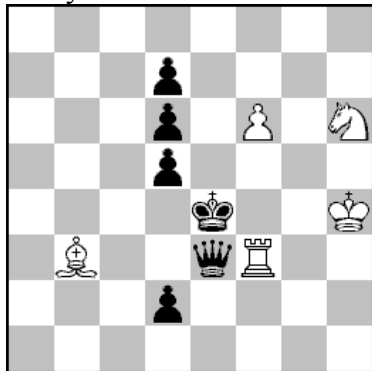
1.g6 de7 2.d7-d5 Lf6#

The Future Helpmate with 3 pairs of thematically connected solutions.

No.6 Živko Janevski, zivko@t-home.mk

Pr. Z. Birnova MT 2017, [Pr. - For best Meredith]

23 Ty. 2016-2017. "Teoria i Praktika", no.14, January-April, 2017.



h#2 4.1.1.1. 5+6

* 1.- Sf5 2.Kd3 Te3:# - Non thematic set-play!

1.d4 Ld5+(A) 2.Ke5 Tf5#(B)

1.Dc5 Te3+(C) 2.Kd4 Sf5#(D)

1.Ke5 Tf5+(B) 2.Ke6 Ld5:#(A)

1.Kd4 Sf5+(D) 2.Kd3 Te3:#(C)

The Future Helpmate with 2 pairs of thematically connected solutions.

Two pairs of the white reciprocal moves, Umnov effects and double Chumakov theme.