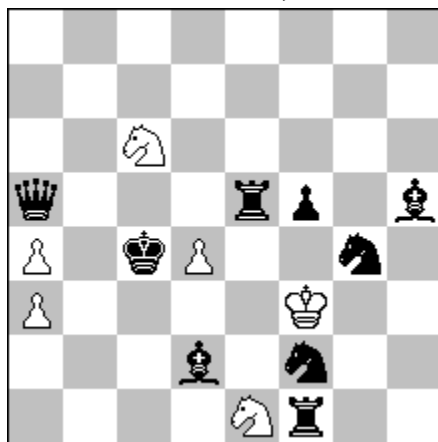


Helpmates for WCCI 2016-2018 / Ofer Comay

1

Ofer Comay

1 Place WCCT-10, 2016-17



H#3

b)e1 to b7

6+9

a) 1.Se3+(1.Sf6+? Kf4?) Kf4 2.Sd5+ (2.Sed1+? Kxe5?) Kxe5 3.Sc3+ Sxa5#

b) 1.Se4+ (1.Sd1+? Ke2?) Ke2 2.Sc3+ (2.Sef6+? Kxd2?) Kxd2 3.Sd5+ Sbxa5#

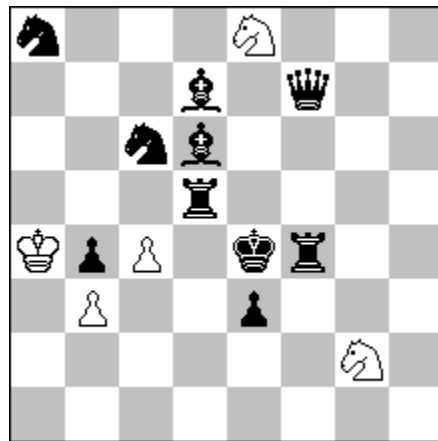
- 6 black crosschecks, 6 black line closures

- Two-way closure of a5-e5: in a) a5-e5 is closed to allow Kxe5, and in b) e5-a5 is closed to allow Sbxa5. Similar strategy on line d2-a5.

2

Ofer Comay

5 Place WCCT-10, 2016-17



H#3

b)e4 to e6

5+10

a)

1.Re5 Se1 2.Sd4 Sxd6#? But white is in mate

1.Re5 Se1 2.Bc8 ?? 3.Sd4 Sxd6# But white is in ZugZwang

1.Rd4 Se1 2.Se5+ Ka5 3.any Sxd6# But 4.Rxd6!

Solution: **1.Rc5! Se1 2.Sd4+ Kxb4 3.Re5+ Sxd6#**

b)

1.Be7 Sxe3 2.Se5 cxd5#? But white is in mate

1.Qe7 Sxe3 2.Rf7 ?? 3.Be5 cxd5# But white is in ZugZwang

1.Be5 Sxe3 2.Se7+ Kxb4 3.any cxd5# But 4.Sxd5!

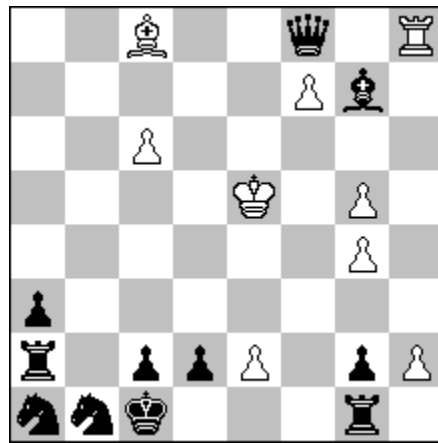
Solution: **1.Bc5! Sxe3 2.Se5+ Ka5 3.Be7+ bxd5#**

Themes: tempo tries, zigzag, Grimshaw

3

Ofer Comay

The Problemist 2018



H#3½ 2 solutions 9+11

I. 1...Ke4 2.Qxh8!! f8=R!! 3.Kd1 Rf1+ 4.Kxe2 Ba6#
2.Qd8?/Qe8+?/Qg8?/Qe7+?/Qd6?/Qc5?/Qb4+?

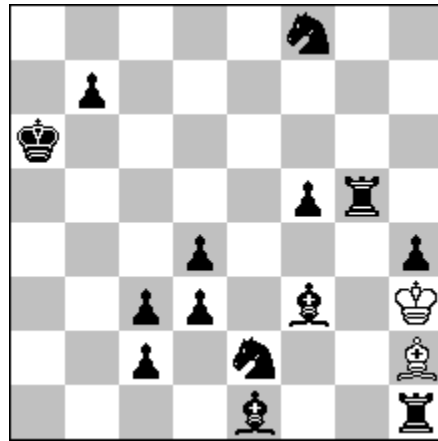
II. 1...Kd5 2.Qxc8!! f8=B!! 3.Kb2 Bxa3+ 4.Kc3 Rh3#
2.Qd8+?/Qe8?/Qg8?/Qe7?/Qd6+?/Qc5+?/Qb4?

Themes: Phoenix, hideaway by capture, Zilahi, minor promotions with delayed reason

4

Ofer Comay

3 Prize, FRME 4, 2018

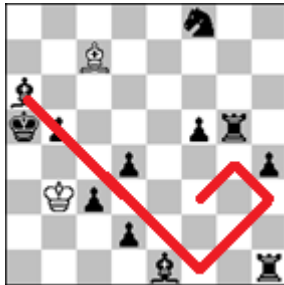


H#7 2 solutions 2+14

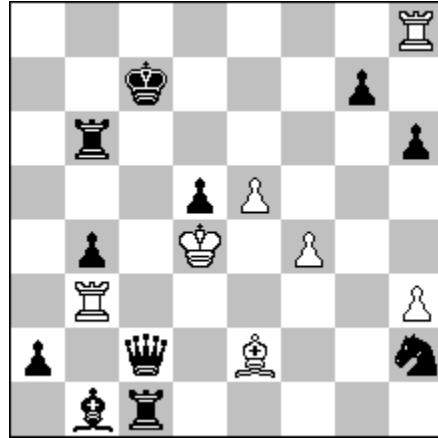
1.Bg4+ Kg2 2.Bh3++ Kf3 3.d2 Kxe2 4.Ka5! (4.Bf1+? Kd3?) 4...Kd3 5.Bf1+ Kxc2 6.Ba6 Kb3 7.b5 Bc7#

1.Rg3+ Kxh4 2.Rh3++ Kg5 3.Ka7! (3.Rh6? Kf6?) 3...Kf6 4.Rh6+ Ke7 5.Ra6 Kd8 6.b6 Kc8 7.Ba8 Bb8#

- Thematic black piece exchange places with white king
- Thematic black piece moves to wK square and then to bK square



Ofer Comay

3rd Pr, Quick composing TT, Ohrid, 2018

H#2 b)c7 => g6 7+11

a) try: 1.Qc6? Rg3 2...Rxc7#? 3.Qd7!

solution: **1.Qxe2! Rg3 2.Rc6 Rxc7#**

1.Qd3? (check) 1.Qe4? (mate) 1.Qf5/h7? (avoids mate) 1.Qg6? (closes g3-g7)

b) try: 1.Qf5? Bb5 2...Be8#? 3.Qf7!

solution: **1.Qxb3! Bb5 2.Bf5 Be8#**

1.Qc3/c4? (check) 1.Qc5? (mate) 1.Qc7/c8? (avoids mate) 1.Qc6? (closes b5-e8)

Themes: Zilahi, hideaway by capture, , harmonious hideaway tries