

# **WCCI 2013-2015**

## **Helpmates**

**Author:**  
**Ladislav Packa, Slovakia**  
laco.packa@gmail.com

1.

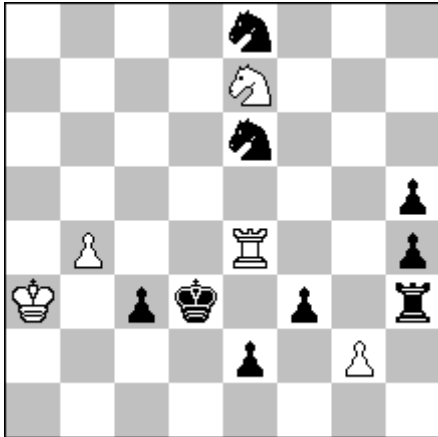
**Ladislav Packa**

Special Prize

6° Tournoi Maroc Echecs 2016

C 31.3.2016

Judge: Kenan Velikhanov



**h#2**

**(5+9)**

**a)**

**1.f2 ♖d4+ 2. ♔e3 ♘f5#**

**b) ♗g2→c7**

**1. ♞d4 c8♙ 2. ♔c4 ♙a6#**

**+c) ♔d3→g5**

**1. ♞d8 c:d8♗ 2. ♞f6 ♘f7#**

**+d) ♗e8→d3**

**1. ♞f4 c8♖ 2. ♔g4 ♖g8#**

**+e) ♜h5→f7**

**1. ♜f6 c8♚ 2. ♞g5 ♚h8#**

**+f) ♞f7→g4**

**1. ♞g3 ♖e5+ 2. ♔f4 ♗g6#**

**+g) ♞h3→c8**

**1. ♞h8 ♖f4 2. ♞h6 ♖f5#**

**+h) ♞g4→h5**

**1. ♞f8 ♖:e6 2. ♞f4 ♖g6#**

C+ by Popeye v4.77

**HOTF 2x4**

1. AUW = HOTF 2x2 (2 „normal-„ and 2 pinmates)

2. 2x2 model mates (2x on g6 and 2x on f5, or 2x ♞ and 2x ♗)

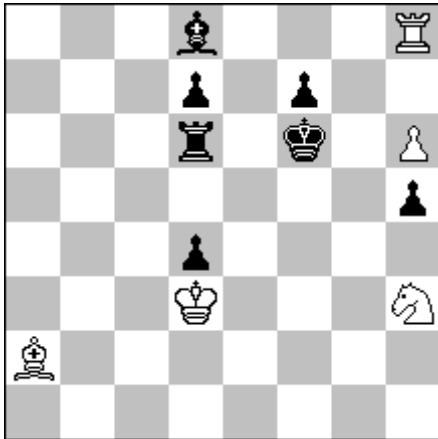
2.

**Ladislav Packa**

3rd – 4th Prize

2nd Competition FRME, C 30-IX-2016

Judge: Valeri Gurov



**h#2**

(5+7)

3.1.1.1.

I. 1. ♔g6 ♙d5 2. ♗f6 ♙e4#

II. 1. ♔f5 ♖g8 2. ♗f6 ♖g5#

III. 1. ♔e7 ♘f4 2. f6 ♘g6#

C+ by Popeye v4.77

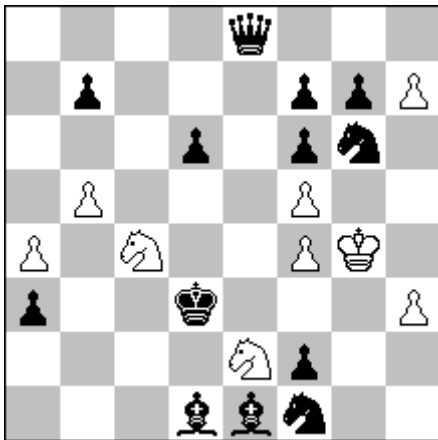
**Judge Valeri Gurov:**

Cyclic interference of black pieces on the square vacated by black king. At the same time uniform play of white: different mating pieces move twice. Of course, interference is not pure, but with self-block, but problem's form is lightweight – meredith and all the idea leaves good impression.

3.

Ladislav Packa

2984 Variantim 72, august 2017



**h#2.5** (9+13)

0.2.1.1.1.

I. 1...h8♔ 2. ♔:b5 ♔e8 3. ♔:c4 ♔:b5#

II. 1...h8♘ 2. ♘:f4 ♘g6 3. ♔:e2 ♘:f4#

C+ by Popeye v4.77

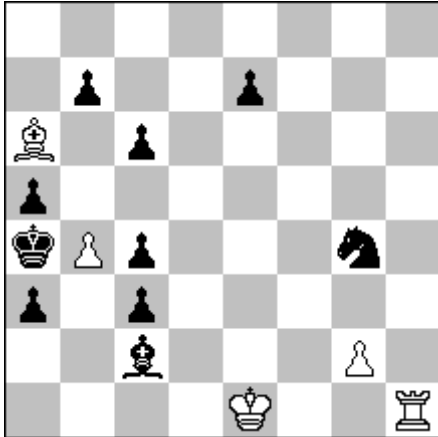
4.

Ladislav Packa

1st Prize

Memorial Sergiu Than C 31.8.2016

Judge: Zoran Gavrilovski



**h#2**

(5+10)

*a posteriori*

b) ♜c6→d7

c) ♙c2→b2

**Judge Zoran Gavrilovski:**

a) 1.c:b3 e.p. 0-0! (the supposed possibility of castling legalizes *a posteriori* (by itself and subsequently) the e.p. capture, by presuming that, in the light of inactivity of the ♔ and ♚, the white last move before the diagram's creation was b2-b4; while 1...♚f1? prevents legalization) 2.♙d1 ♚f4#.

b) 1.♙:b4 (1.c:b3 e.p.?? etc. – ♜d7 closes ♙'s potential exit route from c8, thus ♙c2 is a promoted piece which originated from the h ♜'s promotion on f1 with a previous check to the ♔, so castling is not possible and e.p. capture cannot be subsequently legalized) 1...♚h5 2.a4 ♚b5#.

c) 1.♙b3 ♔e2 (1...0-0?? is impossible because now ♖b4 could not have made a double step, and the last white move before the position of the 3rd twin must have been made by the ♔ or ♚) 2.♙a2 ♙:c4#.

C+ by Popeye v4.77 (except retro part)

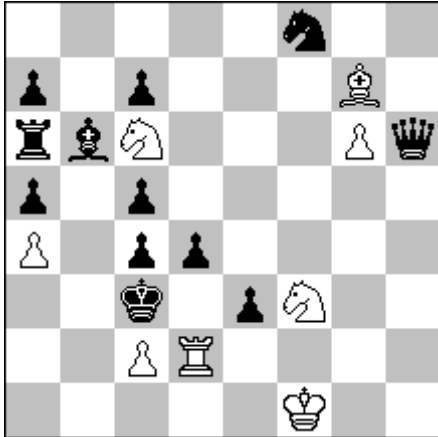
5.

Ladislav Packa

2nd Prize

4th FRME 2018

Judge: Francesco Simoni



**h#2\*** (8+12)

3.1.1.1.

\*1...♔:h6 2.d3 ♔g7#

I. 1.♚h2 ♖:d4 2.♚d2 ♖:d2#

II. 1.♚h5 ♘f:d4 2.♚f3+ ♘:f3#

III. 1.♚g6 ♘c:d4 2.♚c6 ♘:c6#

C+ by Popeye v4.77

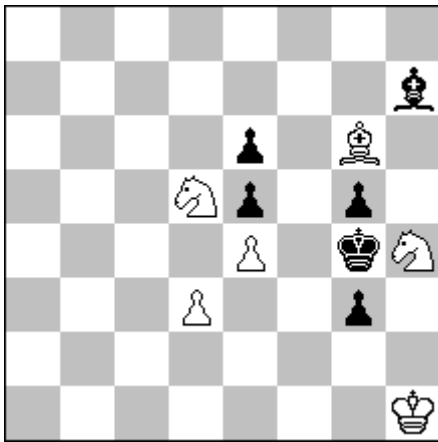
**Judge Francesco Simoni:**

Really remarkable helpmate with a very active BQ, which moves twice to sacrifice itself and allow battery mates with Switchback. The set play fits perfectly in the strategy of the problem.

6.

Ladislav Packa

2979 Variantim 72, august 2017



**h#2**

(6+6)

3.1.1.1.

I. 1.g:h4 ♔g1 2.♚f3 ♙h5#

II. 1.e:d5 ♙h5+ 2.♚f4 ♞g2#

III. 1.♙:g6 ♞f5 2.♚h5 ♞f6#

C+ by Popeye v4.77

Cyclical Zilahi, model mates, meredith (author)