

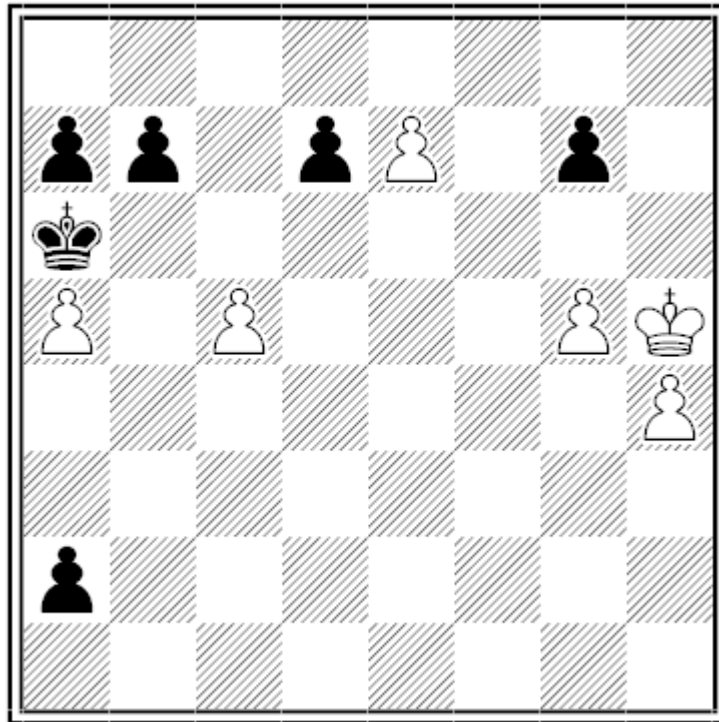
WORLD CHAMPIONSHIP  
IN  
COMPOSING FOR INDIVIDUALS  
(WCCI) 2016-18

**SECTION E**  
**Helpmates**

**Miguel Uris**  
(Spain)

# 1

Miguel Uris  
ASIG June 2017 – H28  
**6<sup>a</sup> Comm.**



(6+6)

Duplex

h#2

[8/pp1pP1p1/k7/P1P3PK/7P/8/p7/8]

AUW – Meredith – Only pawns

a) Diagram

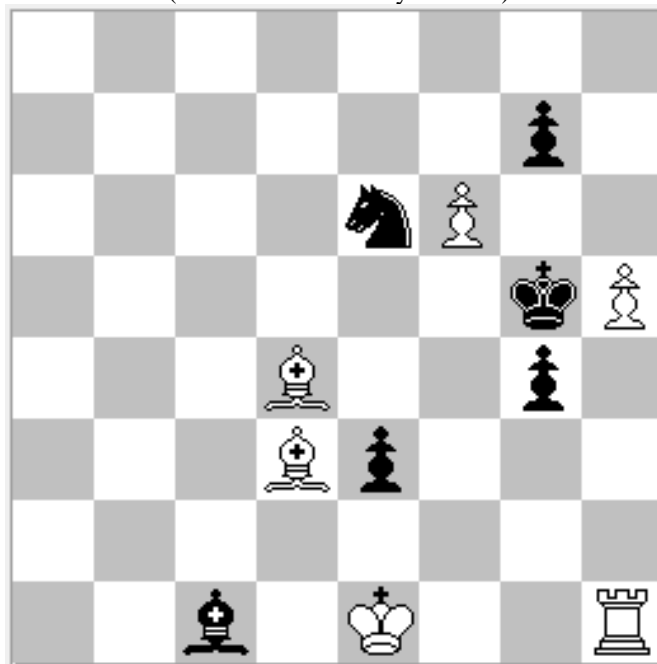
1. **a1=R e8=S** 2. Rxa5 Sc7#

b) Duplex

1. **e8=B a1=Q** 2. Bg6 Qd1#

# 2

Miguel Uris  
Problemas 21 (n° 419) - 2018  
Memorial Rafael Candela  
(Award has not been yet issued)



(6+6)

3 solutions

h#2

8/6p1/4nP2/6kP/3B2p1/3Bp3/8/2b1K2R

Valladao – Meredith

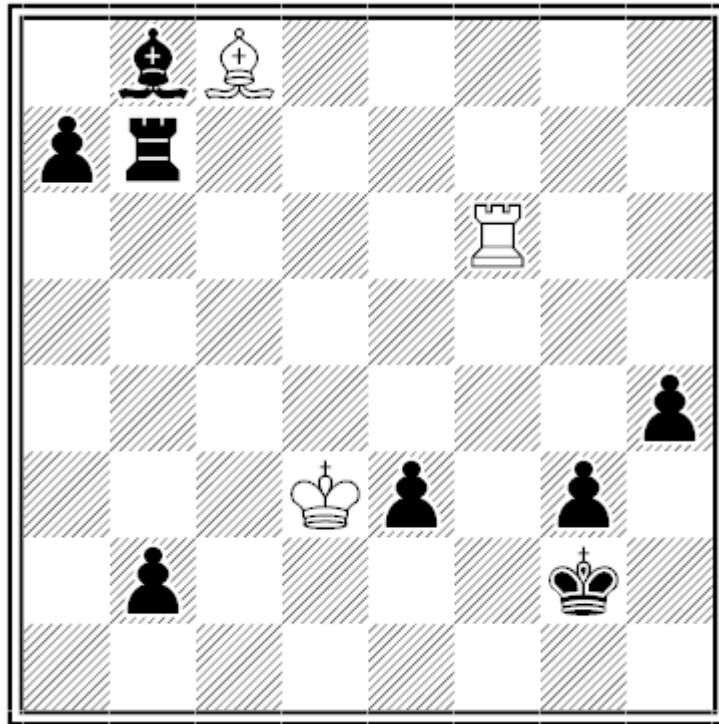
1. Kh6 Bxe3 2. g5 **hxg6 e.p.** #

1. Kf4 Be5 2. Kf3 **O-O** #

1. Kh6 fxg7 2. Sg5 **g8=S** #

# 3

Miguel Uris  
Problemas 20 (n° 406) - 2017  
Jubilee Jordi Breu – 90



(3+8)

2.1.1.1

h#2

1bB5/pr6/5R2/8/7p/3Kp1p1/1p4k1/8

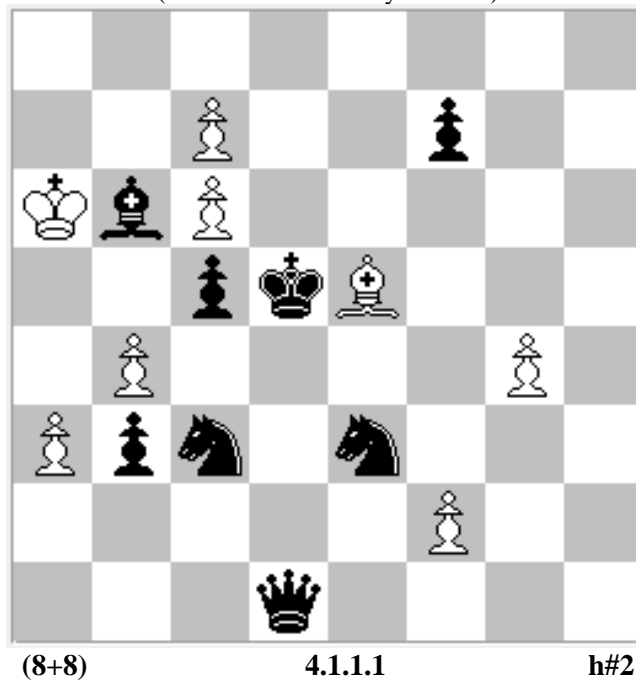
Grimshaw – Indian - Meredith

1. **B**c7 **R**f5 2. Kh3 Rf2#

1. **R**c7 **B**f5 2. Kf3 Bh3#

# 4

Miguel Uris  
Problemas 24 (n° 517) - 2018  
Memorial Rafael Candela  
(Award has not been yet issued)



8/2P2p2/KbP5/2pkB3/1P4P1/Ppn1n3/5P2/3q4

Black king star - Allumwlandung

1. Kc4 c8=S 2. Qd3 Sxb6#

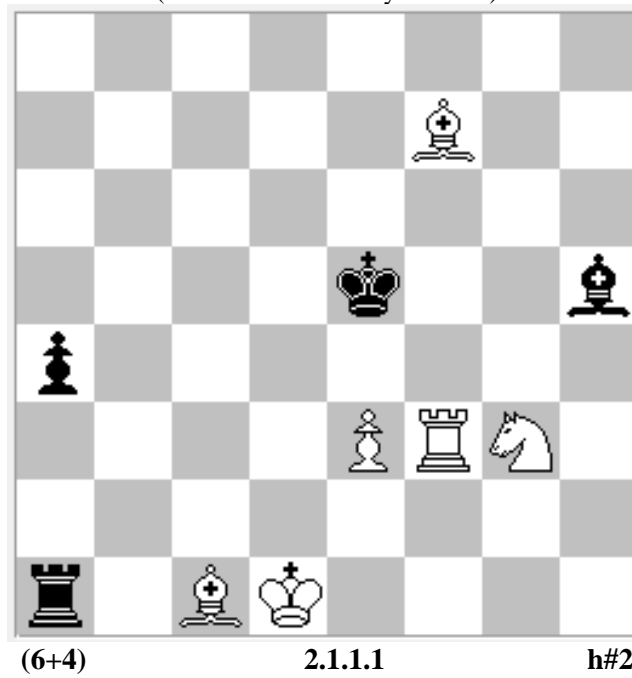
1. Kxc6 c8=B 2. Scd5 b5#

1. Ke6 c8=R 2. Qd5 Re8#

1. Ke4 c8=Q 2. Sed5 Qf5#

# 5

Miguel Uris  
*Problemas 23* (n° 478) - 2018  
Memorial Rafael Candela  
(Award has not been yet issued)



8/5B2/8/4k2b/p7/4PRN1/8/r1BK4

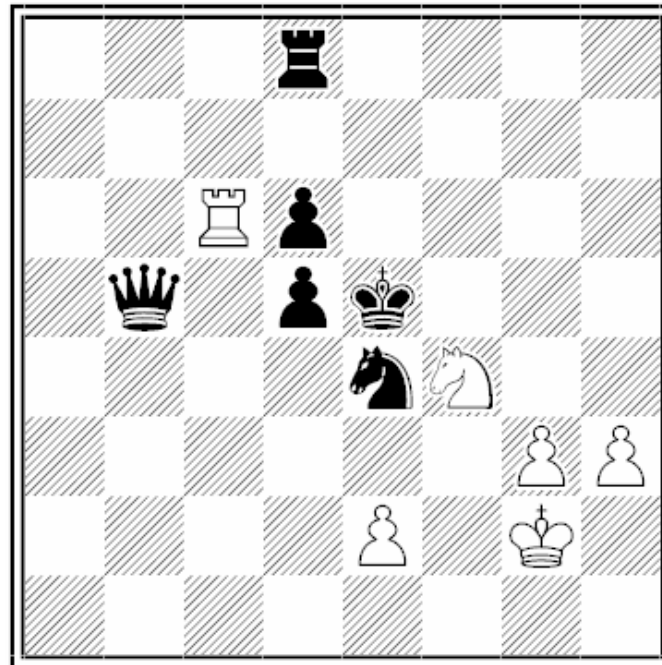
Direct & Undirect Unpinnings - Meredith

**1. Bg6 Rf6 2. Bb1 Bb2#**

**1. Ra2 Ba3 2. Re2 Rf5#**

# 6

Miguel Uris  
Problemas 19 n° 338 – 2017  
Jubilee Jordi Breu – 90



(6+6)

h#2

a) Diagram b) +(-d5) c) +(-Qb5) d) +(-Td8) e) +(-Ce4) f) +(-d6)

3r4/8/2Rp4/1q1pk3/4nN2/6PP/4P1K1/8

Theme Striptease

**a) Diagram**

1. d4 g4 2. d5 Sg6#

**b) then -d5**

1. Kd4 Kf3 2. Qe5 e3#

**c) then -b5**

1. Rf8 Rxd6 2. Rf6 Rd5#

**d) then -d8**

1. Kd4 Rxd6 2. Ke3 Rd3#

**e) then -e4**

1. d5 e4 2. d4 Re6#

**f) then -d6**

1. Kf5 e4 2. Kg5 Rg6#