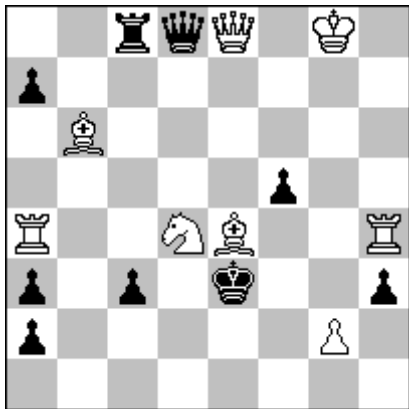


E-1 Marko Klasinc

3. H.M. Internet T. Ohrid 2018



h#2 2.1.1.1 8+9

C+

1.Qxb6 Ra5 2.Kxd4 Bxf5 #

1.Qxh4 Qd8 2.Kxe4 Sc6 #

Four batteries (two direct and two indirect) with two front pieces on d4 and e4 exist in the initial position.

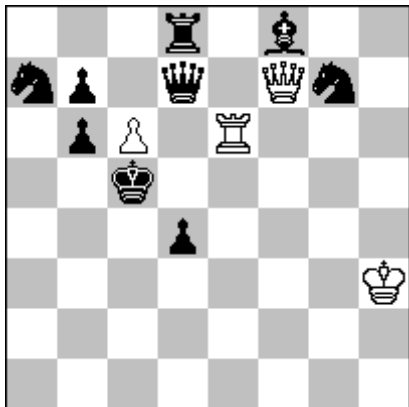
In the first solution two of them are destroyed - one direct (Sd4-Bb6 - by capturing) and one indirect (Sd4-Ra4 - withdrawal of the rear piece Ra4). Remaining indirect battery (Be4-Rh4) transforms into direct one and direct (Be4-Qe8) into indirect one.

In the second solution vice versa: indirect battery (Be4-Rh4) is destroyed by capturing and direct battery (Be4-Qe8) by withdrawal of the rear piece Qe8. Remaining indirect battery (Sd4-Ra4) transforms into direct one and direct (Sd4-Bb6) into indirect one.

Pseudo Zilahi - mates delivered by Be4 and Sd4.

E-2 Marko Klasinc

Comm. BIT (Belgrade Internet T.) 2018



h#2

4.1.1.1

4+9

C+

1.Qc7 Re5+ 2.Kd6 Qf7-d5 #

1.Qd6 Re4 2.d3 Qf7-c4 #

2 x gate opening after unpinning of wRe6, followed by direct moves of wQ to mating squares.

1.Kd5 Qf2 2.Bc5 Qf2-a2 #

1.Ld6 Qf1 2.Kxc6 Qf1-c4 #

2 x bypass (peri) manoeuvre of wQ to reach mating squares.

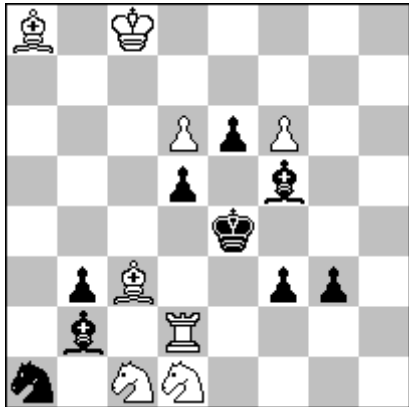
Two pairs of solutions present opposite tactical effects - to bring wQ to the a2-d5 line in two different ways.

Black king mated on four adjacent squares (c5-c6-d5-d6).

HOFT

E-3 Marko Klasinc

6. Comm. BIT (Belgrade Internet T.) 2017 (v)



h#2 2.1.1.1 8+9

C+

1.Ba3 Ra2 2.Bb2 Ra4 #

1.Bxc1 Rxd5 2.Bf4 Rd2 #

Reciprocal Klasinc theme:

bB - wR: Bb2-a3 - Ra2 - Bb2

wR - bB: Rd2xd5 - Bf4 - Rd2

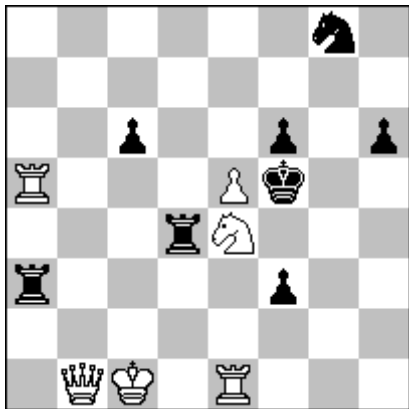
Version published in feenschach nov.-dec. 2017

Klasinc theme:

A piece opens a gate for another line-piece of either colour and then returns to its initial square.

E-4 Marko Klasinc

2. H.M. Shorokhov 50 JT-2018



h#2 b) Re1-->e6 8+9

C+

a)

1.Rd6 Ra4 2.Kxe5 Sc3 #

b)

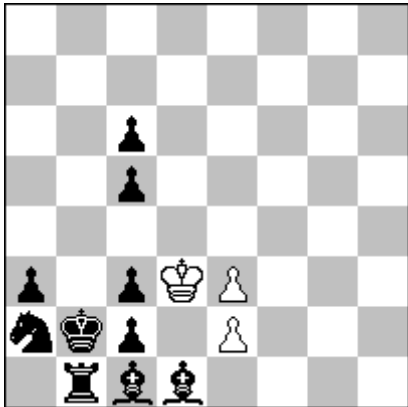
1.Rad3 Qb8 2.Kxe4 ef6 #

Mate by opening of three batteries (one direct and two indirect) at the same time.

Transformation of batteries – a direct to indirect and vice versa.

E-5 Marko Klasinc

feenschach nov.-dec. 2017



h#6*

3+10

C+

1... e4 2.Ra1 e5 3.Kb1 e6 4.Bb2 e7 5.Kc1 e8Q 6.Rb1 Qe3 #

1.Kb3 e4 2.Bb2 e5 3.Ba1 e6 4.Kb2 e7 5.Kc1 e8Q 6.Bb2 Qe3 #

Set play: square vacation Klasinc theme bR-bK: Rb1-a1 - Kb1 - Kc1 - Rb1.

Solution: reciprocal square vacation Klasinc theme in a single solution:

bK-bB: Kb2-b3 - Bb2 - Ba1 - Kb2

bB-bK: Bb2-a1 - Kb2 - Kc1 - Bb2

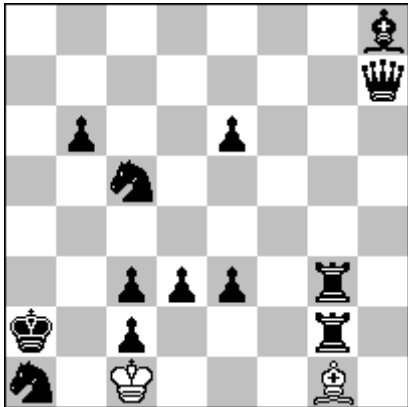
6-move Platzwechsel

Square vacation Klasinc theme:

A piece A vacates a square X, a piece B moves to this square and then vacates it. Then A returns to its initial square X.

E-6 Marko Klasinc

7. H.M. Selivanov 50-JT 2017



h#7 2.1.1... 2+13

C+

1.Rg7 Bxe3 2.d2+ Bxd2 3.R2g6 Bxc3 4.Sab3+ Kxc2 5.Sc1 Bb4 6.Ka1 Ba3 7.Sa2 Bb2#

1.e2 Bd4 2.Qd7! (Qe4/h4?) Bxc3 3.Qb5! (Qb4?) Kd2 4.Kb1 Ke1 5.Kc1 Ba5! (B~?, Bb4?)
6.Qb1 Bb4! (Bc3?) 7.Bb2 Bd2#

Qh7 and Bh8 are cut-off by bR interferences in first solution (+ Platzwechsel Sa1-Ka2).

They both come closer to make blockades around black king in another solution. Dual avoidances because of mutual wB-bQ obstructions on b4.