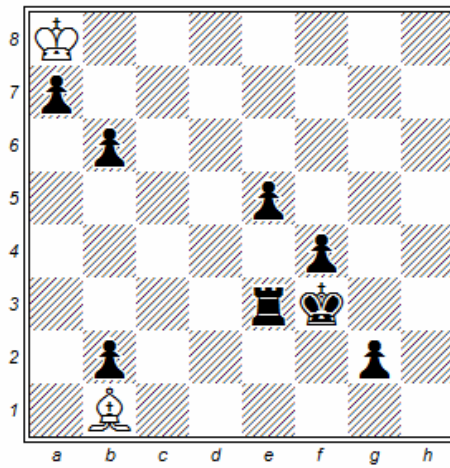


1  
Reinhardt Fiebig  
Schach 2016

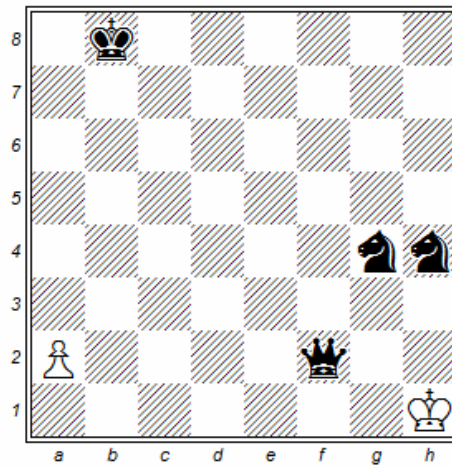


h#5 (2+8)

1.g1=S Bh7 2.b1=B K:a7 3.Bg6  
K:b6 4.Ke4 Kc5 5.Sf3 B:g6#

Ideal-mate, under-promotions,  
Bristol wB/bB

2  
Reinhardt Fiebig  
Schach 2017

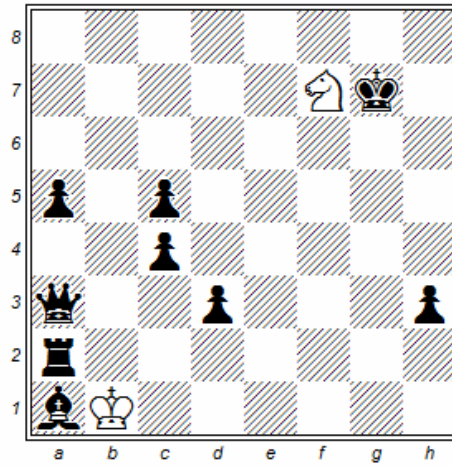


h#7,5 (2+4)

1.- a4 2.Kc7 a5 3.Kd6 a6 4.Ke5  
a7 5.Kf4 a8=S 6.Kg3 Sc7 7.Kh3  
Se6 8.Dg3 Sg5#

Ideal-mate, Letztform, 3 white  
moves after promotion

3  
Reinhardt Fiebig  
Problem-Forum 2018

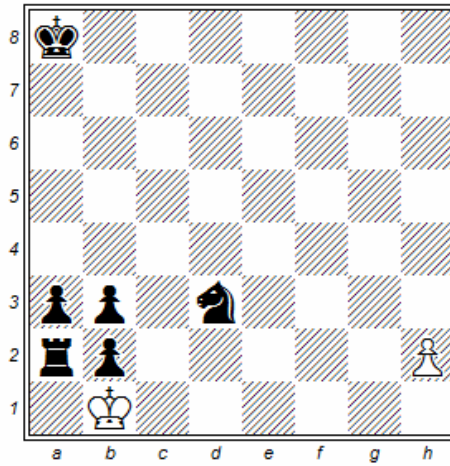


h#6 (2+9)

1.Rg2 Se5 2.Kh8 S:d3 3.Rg8 Kc2  
4.Bg7 Se5 5.Qd3+ Kc1 6.Qh7  
Sf7#

Switchback wS, tempoplay wK

4  
Reinhardt Fiebig  
Springaren 2018

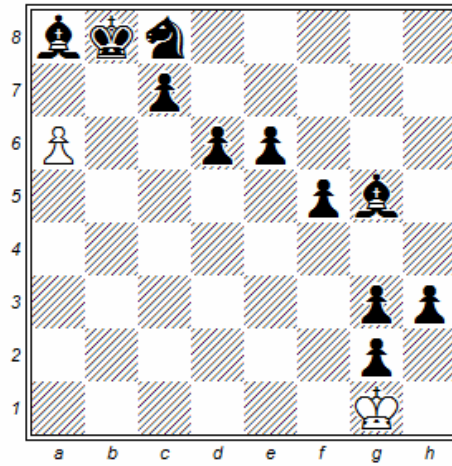


h#8 (2+6)

1.Kb7 h4 2.Kc6 h5 3.Kd5 h6  
4.Ke4 h7 5.Kf3 h8=Q 6.Kg2  
Q:b2+ 7.Kh1 Qf6 8.Rh2 Qf1#

Diagonal-hike of bK from a8 to  
h1

5  
Reinhardt Fiebig  
Schach 2018

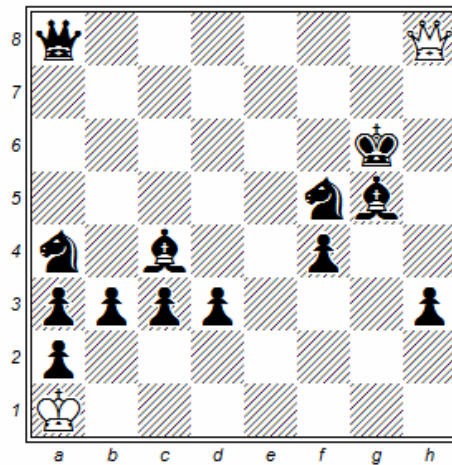


h#6

(2+11)

1.Bc6 a7+ 2.Kb7 a8=Q+ 3.Kb6  
Q:c8 4.Bd7 Qh8 5.Kb7 Qa1  
6.Kc8 Qa8

6  
Reinhardt Fiebig  
Schach 2018



h#5 (2+13)  
b) + bPe6

a) 1.d2 Q:c3 2.d1=R+ Qc1 3.Rd6  
Qh1 4.Kh6 Q:a8 5.Rg6 Qh8#  
b) 1.h2 Q:a8 2.Kg7 Qg2 3.h1=R+  
Qg1 4.Rh7 Qc5 5.Kh8 Qf8#