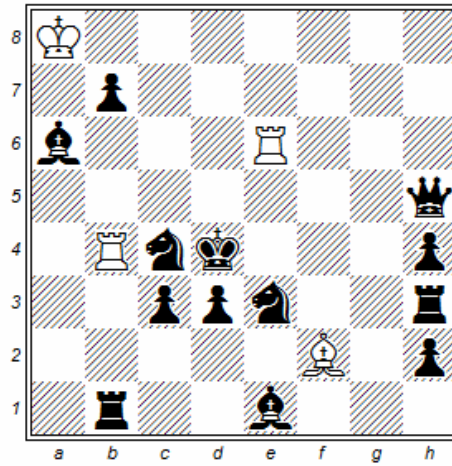


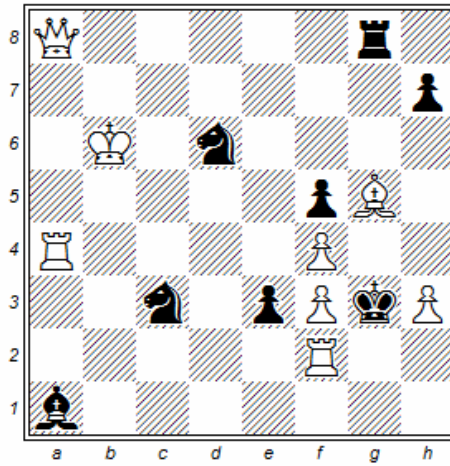
1
Franz Pachl
Schach 2016
1. Prize



h#2 (4+13)
b) wBe6

- a) 1.Od5 Bg1 2.Bg3 B:e3#
b) 1.Oe5 Ra4 2.Rb5 R:c4#

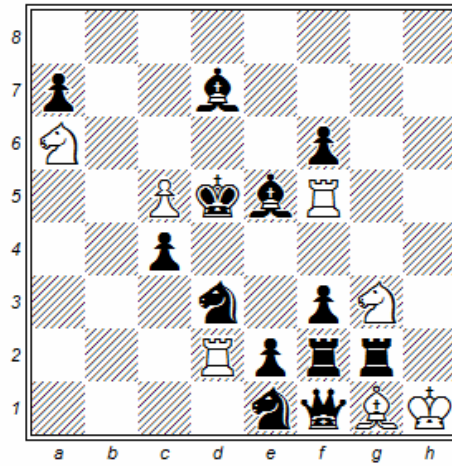
2
Franz Pachl
Gaudium 2016
1. Prize



h#2 (8+8/7)
b) – bPe3

a) 1.Sde4 Bd8 2.K:f4 Qb8#
b) 1.Sce4 Rb2 2.K:f3 Ra3#

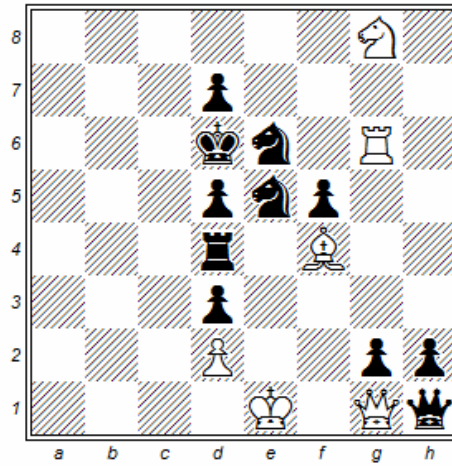
3
 Franz Pachl
 Problem-Forum 2018
 2. Prize



h#2 (7+13)
 2.1.1.1.

- I) 1.Bc6 Txe2! (Txf3?) 2.Txe2
 Sc7#
 II) 1.Be6 Txf3! (Txe2?) 2.Txf3
 Sb4#

4
Franz Pachl
Schach 2018



h#2 (6+11)

b) wSg8→a4

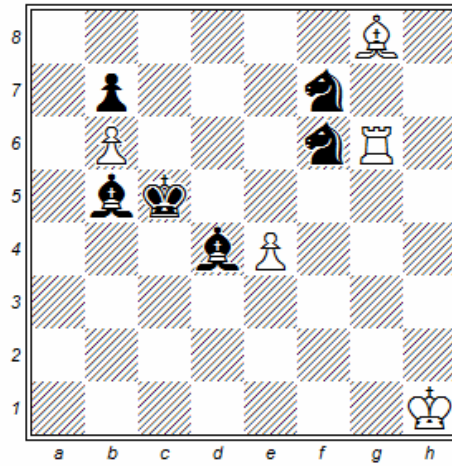
a) 1.Ra4! (Rb4?) R:g2! (B:h2?)

2.Q:g2 Qb6#

b) 1.Rb4! (R:a4?) B:h2! (R:g2?)

2.Q:h2 Qc5#

5
Franz Pachl
feenschach 2018



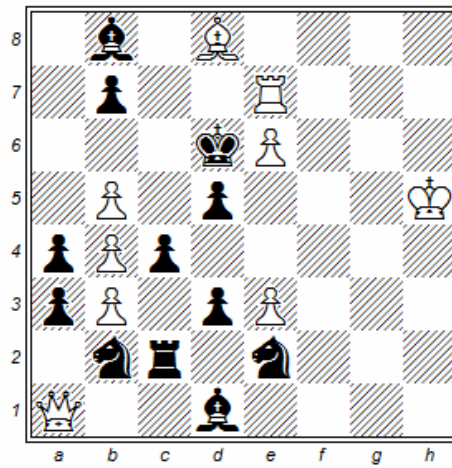
h#3 (5+6)

b) wPe4→f4

a) 1.Kc6 B:f7 2.Bc5 Be6 3.Sd7
Bd5#

b) 1.Kd5 R:f6 2.Bc6 Re6 3.Sd6
Re5#

6
 Franz Pachl
 The Problemist 2018



h#2 (9+12)
 3.1.1.1.

I) 1.d2 R:b7! (Bb6?/e4?) 2.Sd3
 Rb6#

II) 1.c:b3 Bb6! (e4?/R:b7?) 2.Sc4
 Bc5#

III) 1.a:b3 e4! (R:b7?/Bb6?) 2.Sa4
 e5#