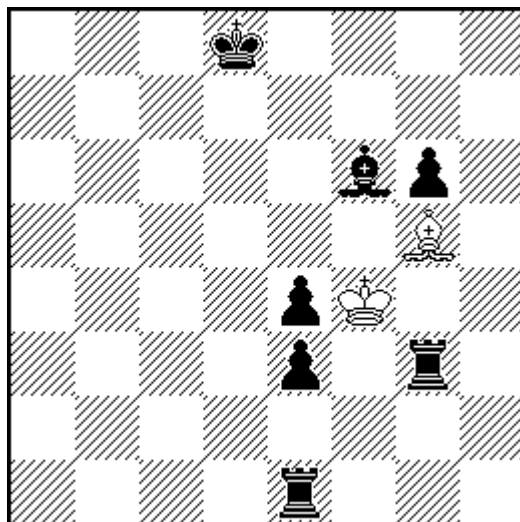


WCCI 2016-2018

1. Zlatko Mihajloski

1-2 . Pr. Moskovski konkurs 2016



H# 6,5

(2 + 7)

1... Ke4 2.Ke7 Le3! 3.Lg7 Kf4! 4.Tf3 Kg4

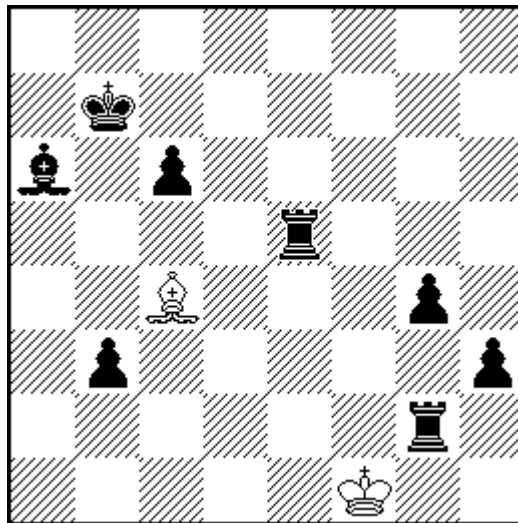
5.Tf7 Lh6! 6.Kf6 Kf4! 7.Te6 Lg5#

3 x Klasinc f4 , 2x w / K L , w/K - b/T, ideal mat

2.

Zlatko Mihajloski

3. Pr. MT Gafarov – 80 2016



H# 7,5

(2 + 8)

1.....Le2! 2. c5 Ke1 3. Kc6 Kd2 4. Lb7 Kd3

5. Kd5 L:g4 ! 6. Lc6 Lc8! 7. Tg6 La6 8. Td6 Lc4#

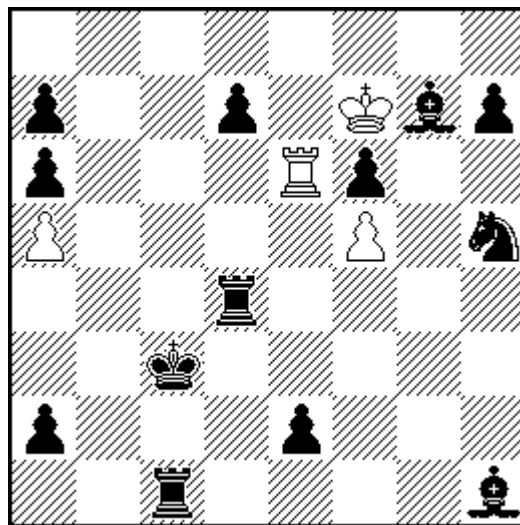
Tema Mihajloski und Rundlauf w.L

Model mat

3.

Zlatko Mihajloski

1.Pr MT Gafarov -80 2016



H# 4,5 * 2. Res. (4 + 13)

***) 1.d:e6 f:e6 2. Kc4 e7 3. Kd5 e8D 4. Tc5 De6#**

R) 1.....Te5 2. f:e5 f6 3. Kd2 f:g7 4. Ke1 g8D 5. Td2 Dg1#

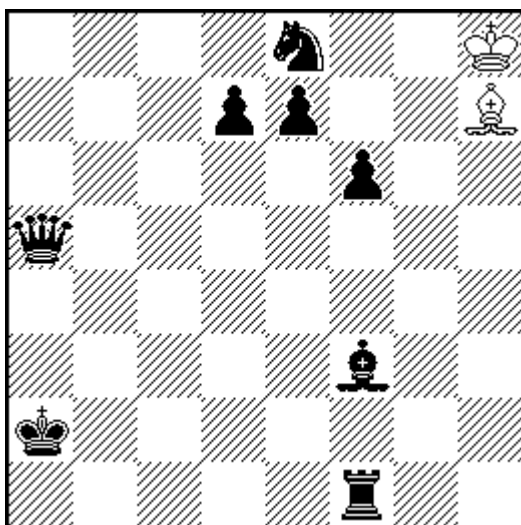
1.....Tb6 2. a:b6 a:b6 3. Kb2 b7 4. Tc8 b:c8D 5. Ka1 Dc1#

3 x zrtva w/ T , modelni matovi

4.

Zlatko Mihajloski

The Problemist 2017



H# 6,5 v

(2 + 8)

v) 1..... Kg8 2. Kb3 Kf7 3. Kc4 Kg6 4. Kd5 Kf5
5. Td1! Kf4 6. Ke6 ?? 7. Td6 Lg8#

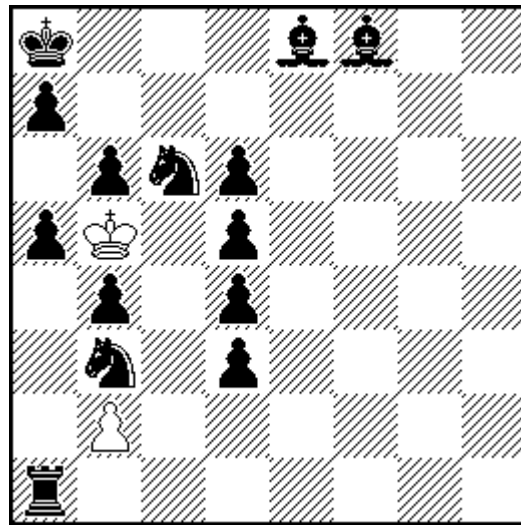
R) 1.... **Lb1+!** 2. Kb3 **Kh7** 3. Kc4 Kg6 4. Kd5 Kf5
5. Td1! Kf4 6. Ke6 **Lh7!** 7. Td6 Lg8#

Bristol Klasivc w/ LK

5.

Zlatko Mihajloski

Die Schwalbe 2016



H# 5,5 b) Ta1-b1 (2 + 14)

a) 1... Ka6 2.Ta3 a3 3.Le7 b4
4.Ld8 a5 5.Lc7 b6 6.Lb8 b7#

b) 1... Ka4 2.Kb7 Kb3 3.Ka6 Ka2
4.Kb5 Kb1 5.Ka4 Ka2 6.Bb5 b3#

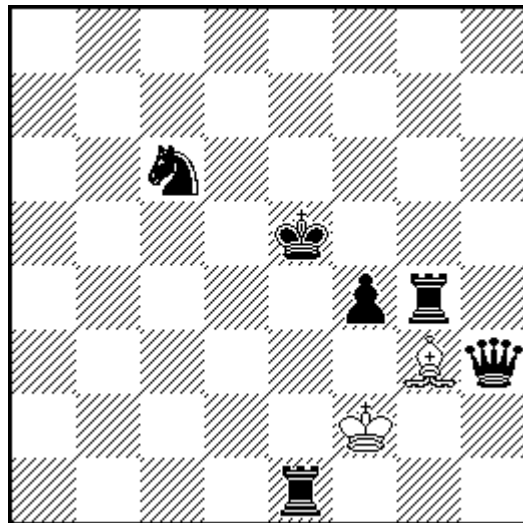
Clk –Cak a l b. w/b K , w/b P L

Cumakov Tema p.b4,a5,b6

6.

Zlatko Mihajloski

Die Schwalbe 2018



H# 6,5

(2 + 6)

1.....Lh4 2. f3 **Le7!**(Ld8?) 3. **Ta4!** Lb4 4. Df5 Kg3

5. Te3 Kh4 6. Kf4 Le1 **7. Te4 Lg3#**

Remer thema w/ LK , Indian b/ T

model mat, Rundlauf w/ L