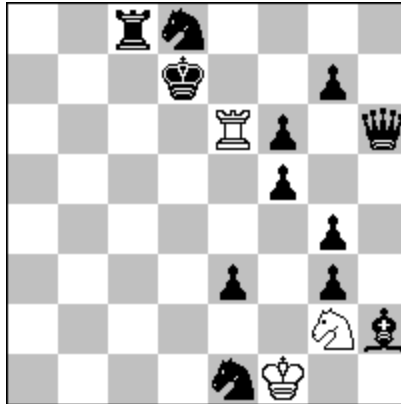


**No1. Araz Almammadov(Azerbaijan)
МК «Николая Овечкин-105», 2016
Commendation**

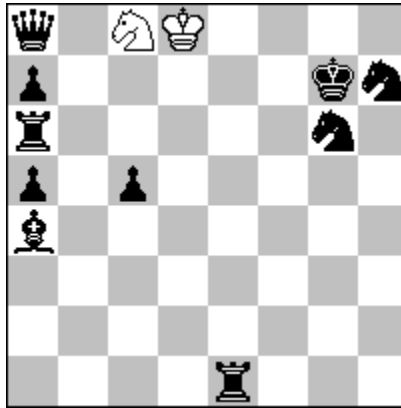


H#3 2 sol (3+12) C+

1. Bg1 Sxe3 (Sh4?) 2. Qh1 Sxf5 3. Qc6 Re7#
1. Sf3 Sh4 (Sf4?) 2. Qf4 Sg6 3. Qc7 Sf8#

Check avoidance (B-W) × 2
Long-trip (S, 3)
Valve (b-q, black)
Model mate × 2

No2. Araz Almammadov(Azerbaijan)
6th Tourney « Maroc Echecs» 2016
Commendation



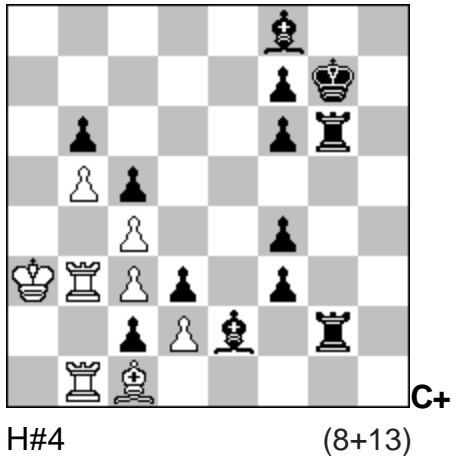
H#4

(2+10)

1.Qh1 ! (Q~?) Se7 2.Rc6 ! (Be8/e1?) Ke8 3.Kh8 Kf7 4.Rc8 (Rc7?) Sxg6# (Model mate)

Corner-to-corner (bQ)
Check avoidance (W-W)
Helledie theme
Hideaway (q,r)
Pin-unpin (white)
Model mate

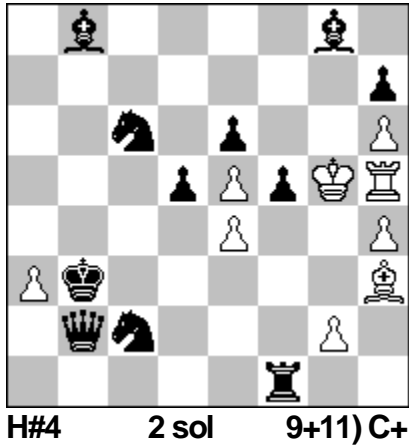
No3. Araz Almammadov(Azerbaijan)
6 th Tourney « Maroc Echecs» 2016
Commendation



1. Rg1 Ra1 2. Rxc1 Rbb1 3. Rh1 Rxh1 4. Rg1 Rxg1#(Model mate)

- Active sacrifice (black) × 2
- Annihilation
- Bristol (white, R-R, impure, 6, 6)
- Hideaway (r, sacrificial) × 2
- Long-trip (r, 3)
- Wigwag (R,r)
- Model mate

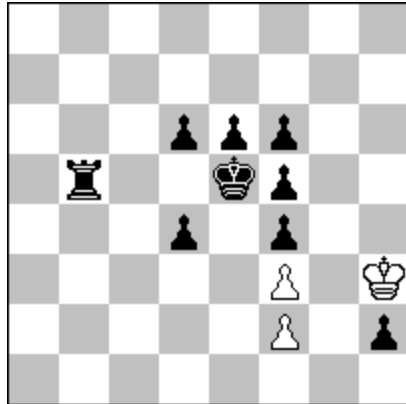
**No4. Araz Almammadov(Azerbaijan)
 Memorial Tourney Valentin Rudenko,2016
 4th Honourable Mention**



1.f5*e4 Bh3*e6 2.Bb8*e5 Kg5-g4 3.Be5-c3 Rh5*d5 4.Rf1-f7 Rd5-a5 #
 1.Rf1-h1 Bh3-g4 2.Rh1*h4 Bg4-f3 3.Rh4*e4 Rh5-h3 4.Re4-a4 Bf3*d5 #

- Annihilation × 4
- Reciprocal batteries
- Ambush (B) × 2
- Ambush (R)
- Ambush (r) × 2
- Hideaway (p)
- Long-trip (B, 3)
- Long-trip (r, 4)
- Model mate × 2

No5. Araz Almammadov (Azerbaijan)
Jubilee tourney Andrey Selivanov-50, 2017
4th Honourable Mention

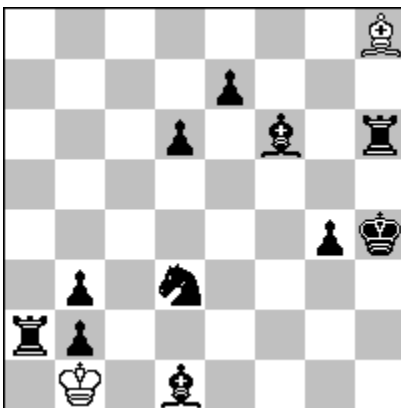


H#5 2 sol (3+9) C+

- 1.h2-h1=B Kh3-h2 2.Bh1*f3 Kh2-g1 3.Bf3-d5 Kg1-f1 4.Ke5-e4 Kf1-e2 5.e6-e5 f2-f3 #
- 1.h2-h1=S Kh3-g2 2.Sh1-g3 f2*g3 3.d4-d3 Kg2-f2 4.f4*g3 + Kf2-e3 5.Rb5-d5 f3-f4 #

Active sacrifice (white, black)
 Annihilation
 Promotion
 Zilahi
 Model mate × 2

**№6. Araz Almammadov(Azerbaijan)
 МТ Марсил Гафаров – 80 ,2016
 2 nd Honourable Mention**



H#6 2 sol (2+11) C+

1.Bg5 Bxb2 2.Sf4 Kc1 3.Kg3 Kd2 4.Rh3 Ke3 5.Bh4 Be5 6.Rg2 Bxf4 #
 1.Kg3 Bg7! 2.Rh3 Bh8! 3.Bh4 Bxb2 4.Bxf3 Bf6 5.Rg2 Bxe7 6.Sf2 Bxd6 #

- Active sacrifice (black)
- Annihilation × 2
- Check avoidance (B-B)
- Long-trip (B, 3)
- Long-trip (B, 6)
- Many ways (b, 2)
- Pin-unpin (white)
- Tempo maneuver (B, waiting, 2)
- Wigwag (B)
- Switchback (B, captureless, 1)
- Model mate × 2