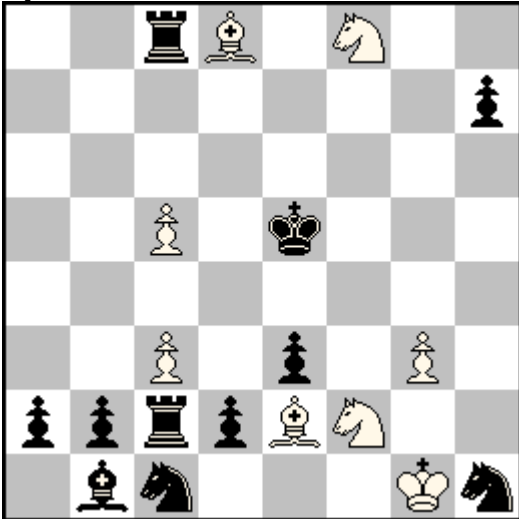


Francesco SIMONI

SuperProblem 2016
Special Prize



2rB1N2/7p/8/2P1k3/8/2P1p1P1/pprpBN2/1bn3Kn

h#2 (8+11) C+

b) ♖f8→a3

c) ♖f8→h2

d) ♘c1→h2

a)

1.R×d8 (R×c5?) Bd3 2.Rd5 Sg4‡

b)

1.R×c5 (R×d8?) Bg4 2.Rd5 Sc4‡

c)

1.R×c3 (S×g3?) Bc4 2.Bf5 Sf3‡

d)

1.S×g3 (R×c3?) Bf3 2.Sf5 Sd3‡

Capture of a white unit with flight giving for BK.

Four-fold cyclic shift of the two squares guarded on W1.

Four-fold cycle of the squares occupied by W1 and mates.

Selfblocks.

Reciprocal Dual Avoidance.

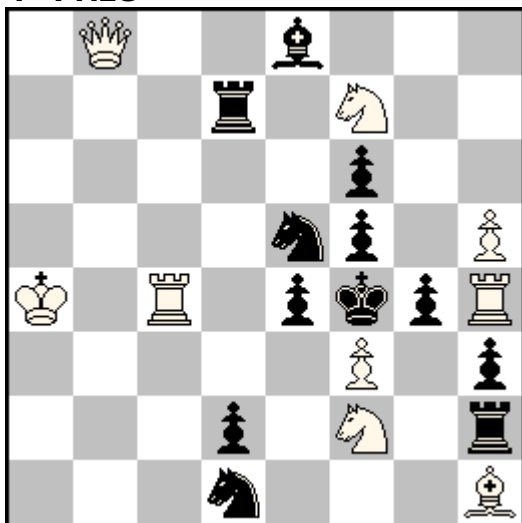
Model mates.

Source : E363, SuperProblem (August 2016)

Francesco SIMONI

SuperProblem 2016

4° Prize



1Q2b3/3r1N2/5p2/4np1P/K1R1pkpR/5P1p/3p1N1r/3n3B

h#2* (9+12) C+

3.1.1.1

1...Rc3 2.e×f3 R×f3‡

1...R×h3 2.g×f3 R×f3‡

1...Qb3 2.S×f3 Q×f3‡

1.Sc3+ R×c3 (R×h3? Qb3?) 2.e×f3 R×f3‡

1.Se3 R×h3 (Qb3? Rc3?) 2.g×f3 R×f3‡

1.S×f2 Qb3 (Rc3? R×h3?) 2.S×f3 Q×f3‡

Tempo keys by the same piece with double dual avoidance in cyclical form.

B/W direct unpins. Triple captures of a white unit. Cycle of double pins.

Double pin mates. The B2 moves and the mates are all on the same square.

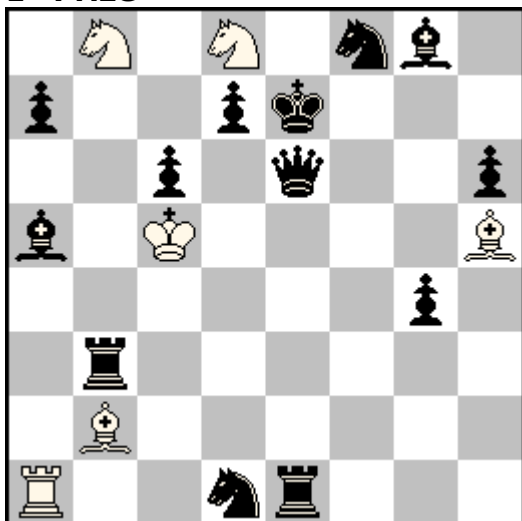
Source :

E382, SuperProblem (November 2016)

Francesco SIMONI

7° Maroc Echecs 2017

1° Prize



1N1N1nb1/p2pk3/2p1q2p/b1K4B/6p1/1r6/1B6/R2nr3

h#2 (6+13) C+

2.1.1.1

1.Bd2 R×a7 2.Qe2 Sb×c6‡

1.Sf2 R×e1 2.d5 Sd×c6‡

1.Bd2 (Bc7? Bc3? B×d8? Bb4+? Bb6+?) R×a7 2.Qe2 (Q ad lib.?) Sb×c6‡
(Sd×c6?)

1.Sf2 (Se3? Sc3? S×b2?) R×e1 2.d5 (d6+?) Sd×c6‡ (Sb×c6?)

Two black pieces guard the square where mates will take place. W1 pins one of them, in turn, while the other abandons the guard in B2. To allow W1, black must open a line. Black has several choices to do so, but only one is correct, the others are tries:

1.Bc7? and 1.Se3? fail for anticipatory pin line closing (effect related to W1);

1.Bc3? and 1.Sc3? fail for obstruction to Bb2;

1.B×d8? and 1.S×b2? fail for flight giving due to a capture;

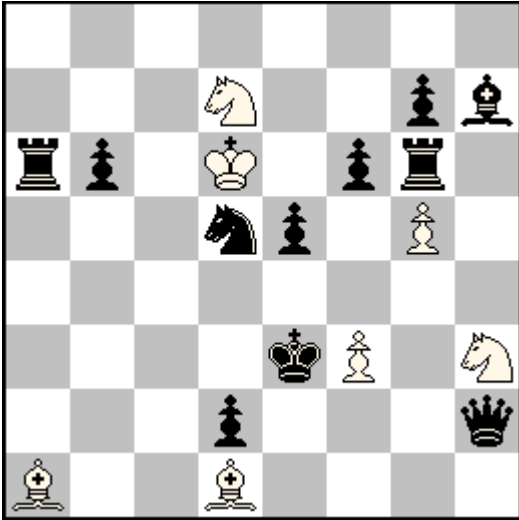
The bBa5 has two other tries: 1.Bb6+? 1.Bb4+? fail for check.

Reciprocal dual avoidance in mates for the anti-block in B2.

Award: November 2017

Francesco SIMONI

The Problemist 2018



8/3N2pb/rp1K1pr1/3np1P1/8/4kP1N/3p3q/B2B4

h#2 (7+11) C+

3.1.1.1

1.Ra3 S×b6 (S×e5?) 2.Rd3 Sc4‡ (S×d5?)

1.Qe2 S×e5 (S×f6?) 2.Qd3 Sg4‡ (Sc4?)

1.R×g5 S×f6 (S×b6?) 2.Bd3 S×d5‡ (Sg4?)

Abandonment of a potential white pin line in B1.
 Cycle of dual avoidance in W1 for direct selfpin.
 Cyclic shift of the two squares guarded by W1.
 Three selfblocks on the same square in B2.
 Cycle of dual avoidance in mate for direct guard.
 Duel piece-square-piece.

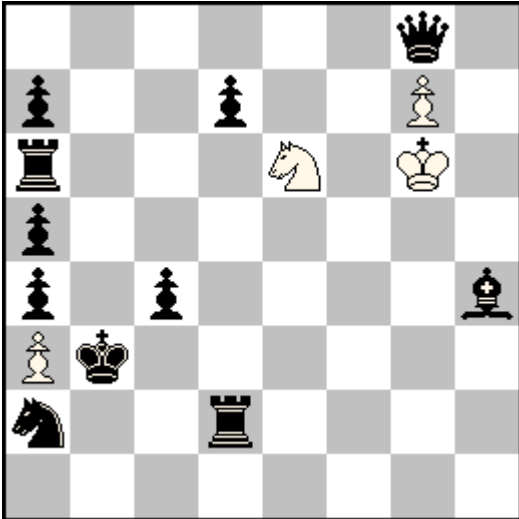
Source:

H4164, The Problemist (September 2018)

Francesco SIMONI

3° Formula One, Associazione Problemistica Italiana 2017

1° Place



6q1/p2p2P1/r3N1K1/p7/p1p4b/Pk6/n2r4/8

h#3 (4+11) C+

b) ♖a2→e2

a)

1.Qf8 g×f8=B 2.Rb2 (d6?) Bb4 3.d6 (Bf6?) Sd4‡

b)

1.Qh8 g×h8=Q 2.Rc2 (Bf6?) Qa1 3.Bf6 (d6?) Sc5‡

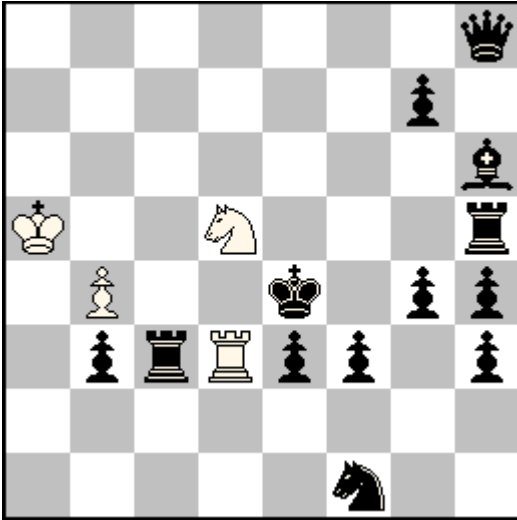
Direct unpin with sacrifice by the unpinning piece, to allow the promotion of the unpinned pawn. Selfblock. Indirect unpin with reciprocal dual avoidance.

Source :

Grand Prix 2, March 2017

Francesco SIMONI

The Problemist 2018



7q/6p1/7b/K2N3r/1P2k1pp/1prRpp1p/8/5n2

h#3 (4+13) C+

2.1.1...

1.Bg5 R×e3+ (Sf6+?) 2.Kd4 Sf4 3.Kc4 Re4‡
 1.g5 Sf6+ (R×e3+?) 2.Kf4 Rd2 3.Kg3 S×h5‡

Indirect white unpins with reciprocal dual avoidance for line opening, where the bQ is the rear piece both in orthogonal and diagonal line. Rd3/Sd5 reversal in flight giving in W1 and mate/flights taking in W2.

Source :

H4154, The Problemist (July 2018)