

WCCI 2016-2018

From: Anatoly Skripnik (Russia,Vladivostok) mail: 777seafrost@gmail.com

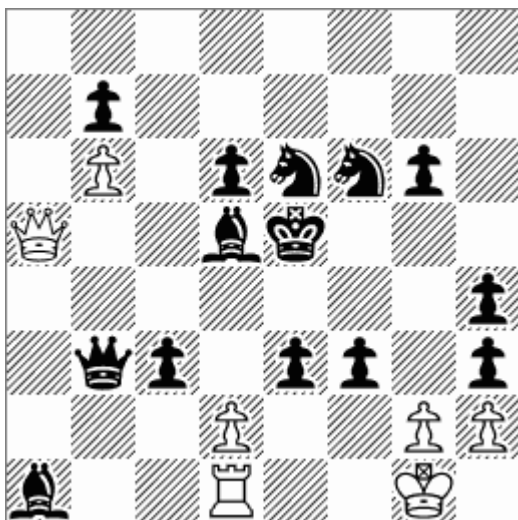
№1

Anatoly Skripnik

Super Problem

2018 № E683 24-10-2018

(Not yet known)



H#2 b) Qa5-c6

c) Rd1-d3

d) Sf6-d4

8/1p6/1P1pnnp1/Q2bk3/7p/1qp1pp1p/3P2PP/b2R2K1

1.Ke5-d4 g2*f3 2.Bd5-c4 d2*c3 #

1.Se6-f4 g2-g4 2.Bd5-e6 d2-d4 #

1.Ke5-f4 g2*h3 2.Bd5-e4 d2*e3 #

1.Ke5-e4 g2-g3 2.Bd5-c6 d2-d3 #

Three patterns combination: double Albino with synergic play of white pawns and BB star. Each pattern occurs in particular move order

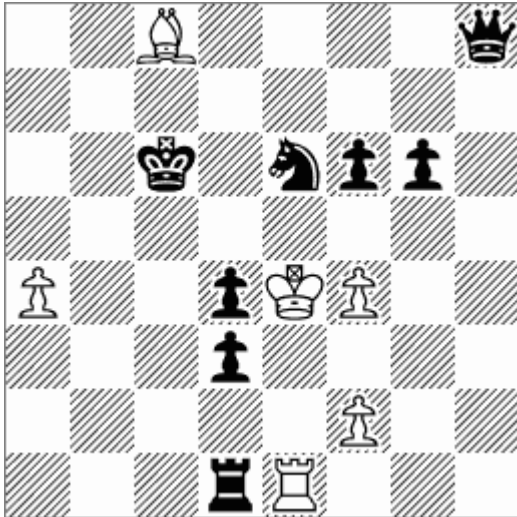
No2

Anatoly Skripnik

Super Problem

2016

1st Prize



h#3

5 sol

6 +8

2B4q/8/2k1npp1/8/P2pKP2/3p4/5P2/3rR3

1.Rb1 **Kxd3** 2.Rb7 Kc4 3.Rc7 Rxe6 #

1.Rxe1 + **Kf3** 2.Kd5 Kg4 3.Ke4 Bb7 #

1.Kc7 **Kd5** 2.Kxc8 Kc6 3.Sf8 Re8 #

1.g5 **Kf5** 2.Rb1 Kxe6 3.Rb6 Rc1 #

1.Rc1 a5 2.Rc5 Rb1 3.Sc7 Rb6 #

An original combination of Zilahi paradox with complete

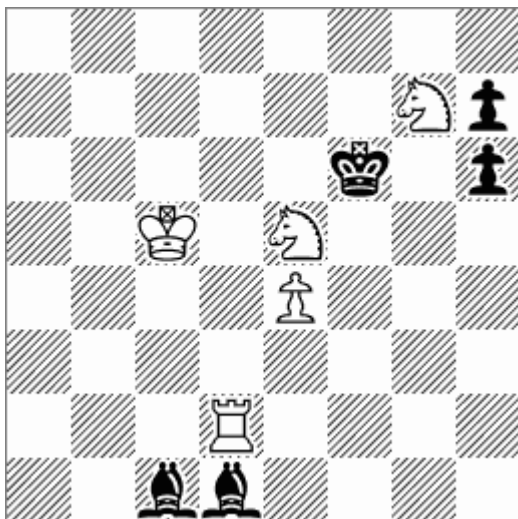
White King's full star play in an excellently constructed position.

№3

Anatoly Skripnik

JT Emil Klemanic.-50 2017

6th Prize



h# 2

5 sol

5+5

8/6Np/5k1p/2K1N3/4P3/8/3R4/2bb4

1. Bxd2 Kd6 2. Bg5 Se8#

1. Kxg7 Rg2 2. Kh8 Sf7#

1. Kxe5 Rd6 2. Bf4 Re6#

1. Kg5 Se6 2. Kh5 Rh2#

1. Ke7 Sf5 2. Kf8 Rd8#

Cyclic combination of Zilahi paradox
with complete

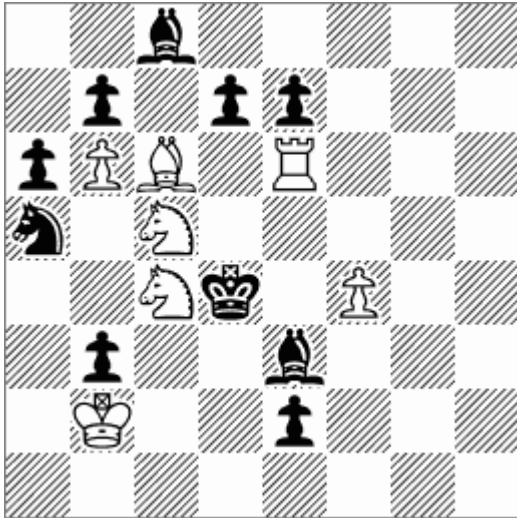
Black King's full star play in an
excellently constructed position.

No4

Anatoly Skripnik

JT Victor Zaytsev-50 2018

1st Prize



h#2 4 sol 7+10

2b5/1p1pp3/pPB1R3/n1N5/2Nk1P2/1p2
b3/1K2p3/8

1.Kxc5 Kc3 2.dc Re5 #

1.de Sxb3 + 2.Kd3 Se5 #

1.d5 Re5 2.dc Rd5 #

1.d6 Se5 2.Bxe6 Sxe6 #

Combination of Zilahi paradox
2x2+Pikinini

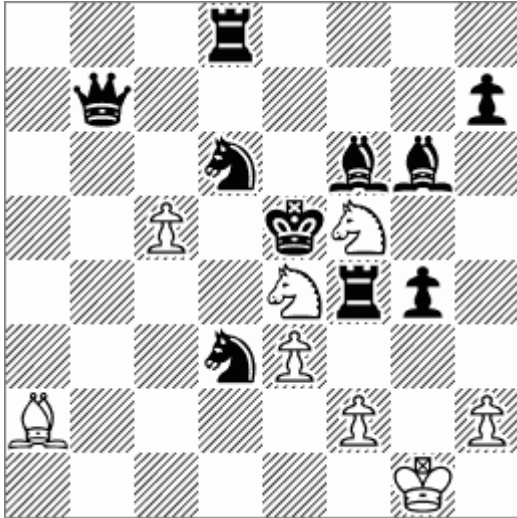
Change of functions of two white
pieces who play the same field on the first
or second move

No5

Anatoly Skripnik (After V.Chepizhny)

JT Ivan Antipin-65 2018

1st Prize



h+2

6 sol

8+10

3r4/1q5p/3n1bb1/2P1kN2/4Nrp1/3nP3/B4P1P/6K1

1.Kxf5 h4 2.Se5 Se4-g3 #

1.Kxe4 Kg2 2.Be5 Sf5-g3 #

1.Rxf5 Sxf6 2.Se4 Sf6xg4 #

1.Sxe4 Sh6 2.Rf5 Sh6xg4 #

1.Bxf5 Se4xd6 2.Qe4 Sd6-f7 #

1.Qxe4 Sf5xd6 2.Bf5 Sd6-f7 #

HOTF Combination of Zilahi paradox 2x3

White horses mate from the same fields

(g3, g4, f7)

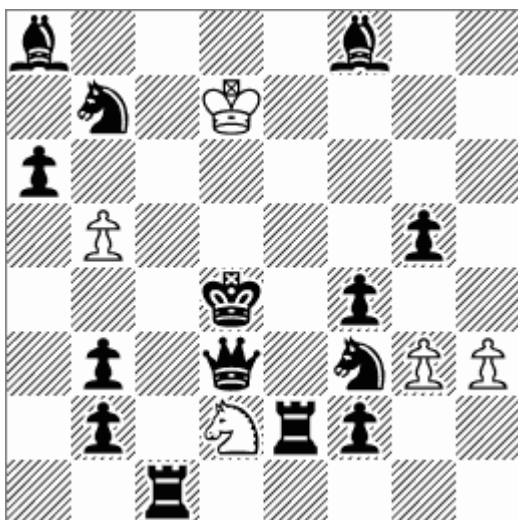
№6

Anatoly Skripnik

Dedicate to L.V.

The Macedonian Problemist 2016

(Not yet known)



h#3 4 sol 5+14

b4b2/1n1K4/p7/1P4p1/3k1p2/1p1q1nPP/1p1Nrp2/2r5

1. Ke3+ Ke6 2. Se1 Ke5 3. f3 Sf1#

1. Kc3+ Kc6 2. Sd6+ Kc5 3. Rc2 Sb1#

1. Kc5+ Kc8 2. Kb6+ Sc4 3. Ka7 b6#

1. Ke5+ Ke8 2. Kf5+ Kf7 3. Re5 g4#

Play black batteries. Stars of both kings

