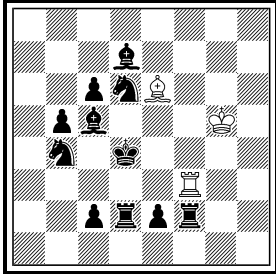


1
Silvio Baier
17069 Die Schwalbe
6/2017 285



h#2,5 C+ (3+11)
 6;1.1;1.1

1) Silvio Baier:

- I) 1.- R:f2 2.Ke3 Bd5 3.Bd4 Rf3#
- II) 1.- B:d7 2.Kd5 Re3 3.Rd4 Be6#
- III) 1.- Rf4+ 2.Kc3 R:b4 3.Bd4 Rb3#
- IV) 1.- Bf5 2.Kc4 B:c2 3.Rd4 Bb3#
- V) 1.- Ra3 2.Ke4 Bb3 3.Kf3 Bd5#
- VI) 1.- Ba2 2.Ke5 Rb3 3.Ke6 Re3#

3x change of functions of wR/wB.

Change of functions of bRd2/bBc5 as active (on the same square) and passive block,

Chumakov of Rf2 in I) and V) and of Bd7 in II) and VI),

Chumakov (bSb4/bPc2 in III) and IV),

Switchbacks of wR/wB in I) and II),

mates on the same square in III) and IV),

reciprocal Indian in V) and VI),

cyclic effect of squares: I): mate with bKe3/wRf3, V): mate with bKf3/wBd5,

II): mate with bKd5/wBe6, VI): mate with bKe6/wRe3.

2

Silvio Baier

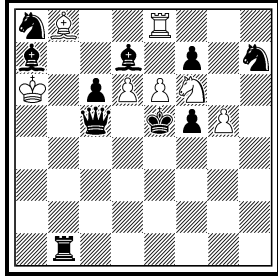
after Claude

Goumondy & Witaly

Medintsew

17644 Die Schwalbe

8/2018 292



h#2 C+ (7+10)

6.1;1.1

2) Silvio Baier:

I) 1.Sc7+ d:c7 2.Kd6 c8=S#

II) 1.Sf8 e7 2.Ke6 e:f8=S#

III) 1.B:b8 e:d7+ 2.K:d6 d8=Q#

IV) 1.B:e8 e:f7+ 2.Ke6 f:e8=Q#

V) 1.Sb6 B:a7 2.K:d6 Bb8#

VI) 1.Bc8+ R:c8 2.K:e6 Re8#

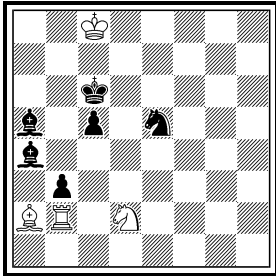
HOTF with three pairs of connected solutions:

I) & II): active sacrifice of a black piece to allow a white pawn to promote to a Knight.

III) & IV): capture of white pieces to allow the black king to move onto its mating square with queen promotions.

V) & VI): Switchback of thematic white pieces.

3
Silvio Baier
Quick Composing
Tournament WCCC
Belgrade 2016
3. Honourable Mention



h#2 C+ (4+6)
 3.1;1.1

- 3) Silvio Baier:**
 I) 1.Kb5 B:b3 2.Sc6 Bc4#
 II) 1.Kd5 R:b3 2.Bc6 Rd3#
 III) 1.Bc7 S:b3 2.Bd6 Sa5#

Theme: first white move to the same square in all phases
 Change of active and passive block (Ba4/Se5) and reciprocal battery play I) and II) including black-black Umnow; in III) creation of two indirect white batteries and black-white Umnow; BBa4a5 & Se5 each block once active and once passive; no cookstopper

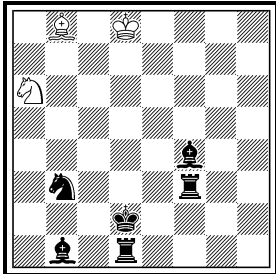
4

Silvio Baier

after Vladimír Kočí

17265 Die Schwalbe

12/2017 288



h#3 C+ (3+6)

b) ♖a6 → e5

4) Silvio Baier:

a) 1.Kc2+ Bd6 2.Bd2 Ba3 3.Rc3 Sb4#

b) 1.Ke3+ Sd3 2.Sd2 Sc1 3.Be4 Ba7#

Change of function of the two white pieces; change of function as active and passive block of Rf3, Bb1, Bf4 and Sb3; model mates