

8+10

+

White to move and win

Composed by: **Daniele Gatti**

NUMBER 1

>>> 2° SPECIAL PRIZE <<< on 4°th ROYAL MOROCCAN COMPOSITION
TOURNEY 2018, judge MARIO GUIDO GARCIA.

Solution: 1. f8=S+!

1. ... Kf6

2. e8=S+ Ke7

(2. Sd7+? Kxe7 3. Sf5+ Kxd7 and Black wins; if 3. Sc8+ Sxd7 and Black wins)

3. Sg6+!

(3. Sc8+? Kxe8 4. Sc7+ Kf7 5. Sd6+ Kf6 6. Sce8+ Ke7 7. Sf5+ Kxe8 and Black wins; if 6. Sde8+ Ke7 7. Sg6+ Kd7 8. Sxe5+ Sxe5 and Black wins)

(3. Sf5+? Kxe8 4. Sc7+ Kf7 5. Sd6+ Kf6 6. Sd7+ Ke7 7. Sc8+ Kxd7 and Black wins)

3. ... Kd8!

(3. ... Ke6 4. Sac7+ Kd7 5. Sf8+ Kd8 6. Sfe6+ Kd7 7. Sc5+ and White wins; if 6. ... Ke7 7. Sf5+ and White wins)

(3. ... Kd7 4. Sb6+ Ke6 [4. ... Kd8? 5. Sf7/b7+ Kxe8 6. Sd6+ Kd8 7. h8=Q+ and White wins] 5. Sf8+ Ke7 6. Sbc8+ [6. Sdc8+? Kxe8 7. Sd6+ Kd8 and Black wins] Kd8 [6. ... Kxf8? 7. h8=Q#] 7. Se6+ Kd7 8. Sc5+ and White wins)

4. Sb7+!

(4. Sf7+? Kxe8 5. h8=Q+ Kxf7 6. Qf8+ Kxg6 7. Qe8+ Kf5 8. Qf8+ Ke4 and Black wins)

First main variation: 4. ... Kc8

5. Sed6+

(5. Sbd6+? Kb8 and mate at next move with 6. ... Rd1#)

(5. Se7+? Kb8 6. Sxc6+ Kxa8 7. Sc7+ Kxb7 and Black wins)

5. ... Kb8

(5. ... Kd7? 6. Sc5+ Kxd6 7. Sxd3 and White wins)

6. h8=Q+ Ka7**7. Sb5+!**

(7. Sc8+? Kxa8 8. Sb6++ Kxb7 9. Qa8+ Kxb6 and White cannot win; if even 10. Qxc6+ Kxc6 11. Sxe5+ Kb5 12. Sxd3 Kc4, White cannot win anyway)

7. ... Kxb7

(7. ... Ka6? 8. Sc5+ Kxb5 9. Sxd3 and White wins)

8. Sd6+ Ka7

(8. ... Ka6 9. Qc8+ and White wins)

9. Qxg7+ Ka6

10. Qb7+ leads to mate at next move.

(10. Sc7+? Ka5! 11. Sb7+ Kb6 12. Sa8+ Kb5 13. c4+ dxc4 14. Sc7+ Kb6 draw)

Second main variation: 4. ... Kxe8**5. h8=Q+ Kf7****6. Sd6+ Kxg6**

(6. Qf8+? Kxg6 7. Qe8+ Kh7 8. Qh5+ Kg8 draw)

7. Qe8+ Kh6

(7. ... Kh7 8. Qh5+ Kg8 9. Qf7+ Kh8 10. Qf8+ Kh7 11. Qf5+ g6 12. Qxd3 and White wins)

8. Sf5+ Kh7

(8. Sf7+? Kh7 9. Sxg5+ Bxg5 10. Qh5+ Kg8 draw)

(8. Qe6+? g6! 9. Sf5+ Kh5 10. Sg7+ Kh6 11. Sf5+ draw for perpetual check)

9. Qh5+ Kg8**10. Sh6+**

(10. Qxg4? Rxc3! 11. Qd1 Sb4 draw)

10. ... gxf6

(10. ... Kh7 11. Sxg4+ and White wins)

(10. ... Kf8? 11. Qf7#)

11. Qg6+ and White wins

(11. Qe8+? Kg7 draw)

FEN: N7/4PPpP/2nN2k1/3pp1p1/6pb/2Pr2p1/6P1/7K



9+10

+

White to move and win

Composed by: **Daniele Gatti**

NUMBER 2

Published on STRATEGEMS (2018)

Waiting for verdict

Try: 1. Kg1? But 1. ... Ba7! and Black wins

Solution: 1. Rxf4! [threat 2. Rg1 and mate in a few moves]

1. ... Rf1+

(1. ... Bxd5+? 2. cxd5+ and White wins)

2. Rg1 Bxd5+

3. cxd5 Rxf1+

4. Kxf1 Ba7

5. d8=B!! Ka5

(5. d8=Q? Bxb6+ 6. Qxb6 stalemate)

6. Kf2! Bxb6+

7. Bxb6+ Kxb6

8. Kf3! Kc5

(8. Ke3? Kc5 9. Kxd3 Kxd5 positional draw)

9. Kg4 Kxd5

10. Kxh4! Ke4

(10. Kxh3? Ke5 11. Kg2 d5 12. h3 d4 13. Kf2 Kf4 positional draw)

11. Kg4 d5

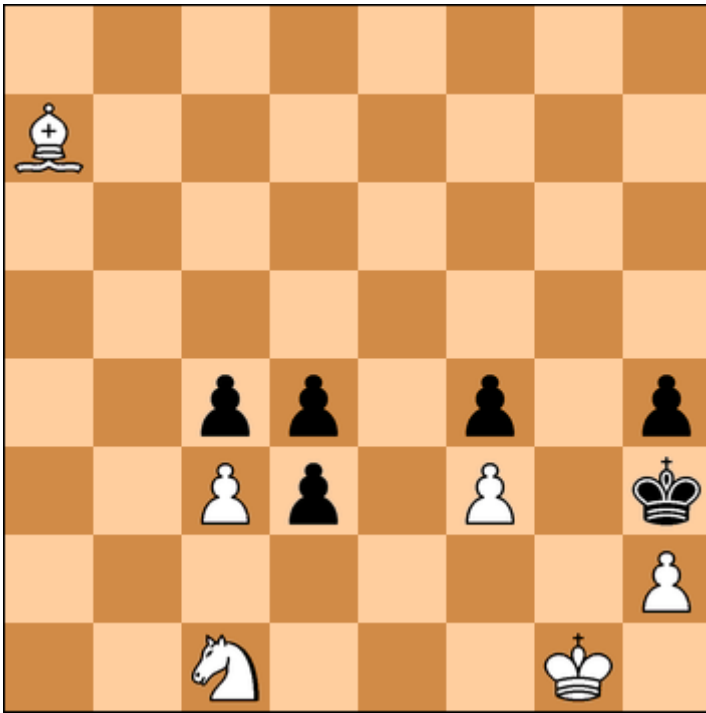
12. Kg3 d4

13. Kg4 Ke5

14. Kxh3 Kf4

15. Kg2 and White wins

FEN: 1b3r2/1b1P4/1R1p2R1/3P4/k1P3pp/1p1p3p/1P1P3P/7K



6+6

=

White to move and draw

Composed by: **Daniele Gatti**

NUMBER 3

Published on [SINFONIE SCACCHISTICHE \(2017\)](#)

[Waiting for verdict](#)

Try: 1. Se2? [threat 2. Sxf4#]

But 1. ... dxe2! 2. Kf2 Kxh2 3. cxd4 h3 4. d5 c3 5. Kxe2 Kg2! 6. Bg1 Kxg1 7. d6 h2 8. d7 h1=Q 9. d8=Q Qg2+ 10. Kd1 Qd2+ 11. Qxd2+ cxd2 12. Kxd2 Kf2 and Black wins.

Solution: 1. Kh1!

1. ... d2

(1. ... dxc3? 2. Bb8! d2 (2...c2 3.Bxf4 d2 4.Bxd2 c3 5.Se2 [+ -]) 3.Se2! [+ -])

2. Se2 [threat 3. Sxf4#/Sf2#] **d1=Q+**

3. Sg1+! Qxg1+

4. Kxg1 d3

(4. dxc3? 5. Bb8 c2 6. Bxf4 c3 7. Be3 c1=Q+ 8. Bxc1 c2 9. Kf2! [+ -])

5. Kh1!! d2

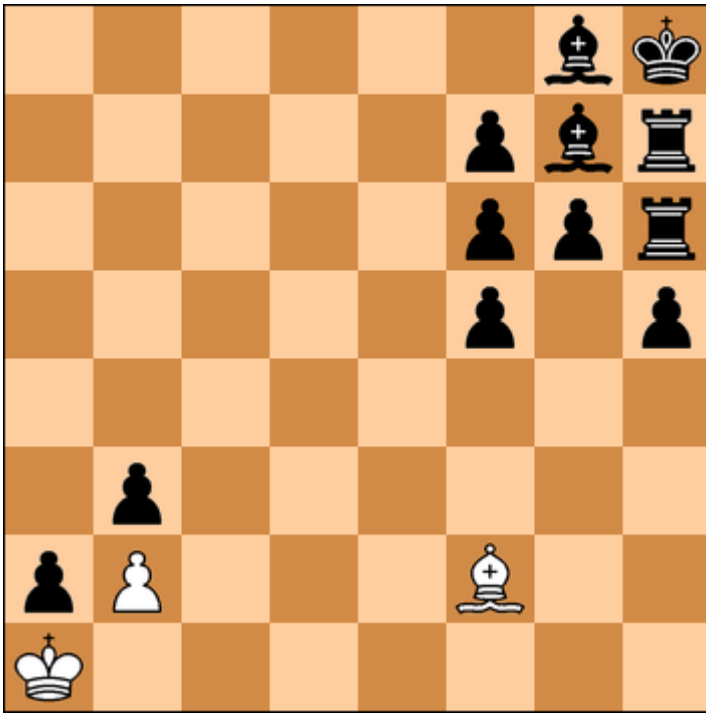
6. Bg1!

If now **6. ... d1=Q** (or **d1=R**), stalemate.

If **6. ... d1=S** **7. Bd4!** and positional draw.

If **6. ... d1=B** **7. Bc5 Bxf3+** **8. Kg1** and with opposite bishops, positional draw.

FEN: 8/B7/8/8/2pp1p1p/2Pp1P1k/7P/2N3K1



3+12

=

White to move and draw

Composed by: **Daniele Gatti**

NUMBER 4

Published on [SCHACH \(2017\)](#)

Try: 1. Bd4? Bf8 2. Bxf6+ Rg7 3. Bxg7+ Kh7 4. Bxf8 (4. Bxh6? Ba3! and the stalemate castle on south-west is gone) but now Black wins with 4. ... f4!! The white Bishop misses the focal diagonal b8-h2 and the loose black pawns in F and H column cannot be both stopped.

Solution: 1. Bc5!

1. ... Bf8

2. Bxf8 Rg7

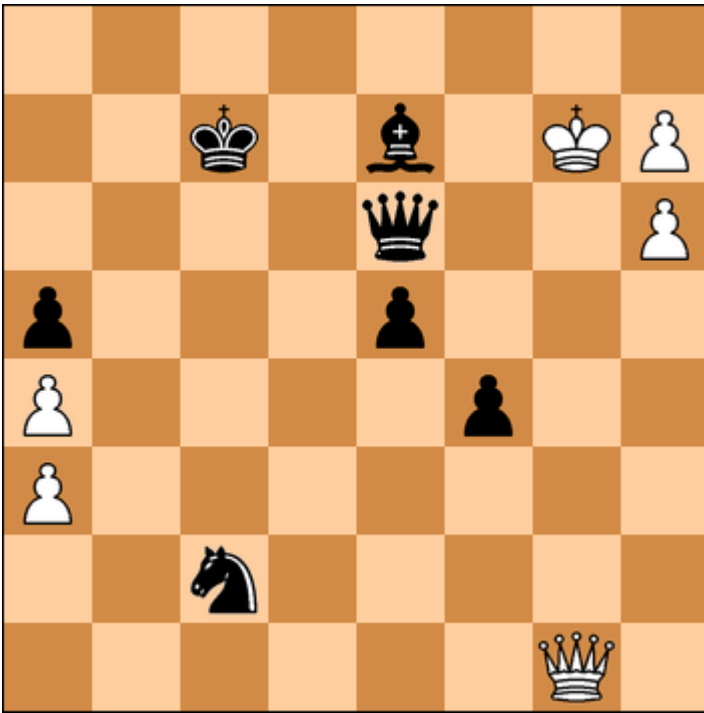
3. Bxg7+ Kh7

4. Bxh6 h4

5. Bf4 and positional draw: white Bishop will keep himself on b8-h2 diagonal forever, capturing every pawn that tries to pass the line, while Black can never capture the Bishop or it's stalemate; Black pawns can never be shielded in their forerunning because there are no available pieces. And with only a light-squared Bishop, he cannot even destroy or influence in any way the stalemate building on south west.

Note: in spite of the evidence of positional draw, many chess engines still claim great advantage for Black.

FEN: 6bk/5pbr/5ppr/5p1p/8/1p6/pP3B2/K7



6+7

=

White to move and draw

Composed by: **Daniele Gatti**

NUMBER 5

Published on [VARIANTIM \(2018\)](#)

[Waiting for verdict](#)

Try: 1. Qa7+?

But 1. ... Kc6! 2. Qa6+ Kd5 3. Qd3+ Sd4 4. h8=Q Bf6+ and Black wins

Solution: 1. Qg6!

1. ... Bf8+

2. Kh8! Kd7

(2. Kxf8? Qxg6 3. h8=Q Qf5+ and Black wins)

3. Qf7+! Be7

(3. ... Qxf7 stalemate)

4. Kg7! Se3

(Avoided dual: 4. Kg8? f3! 5. h8=Q f2 6. Qhg7 f1=Q 7. h7 Qxf7+ 8. Qxf7 Qg4+ 9. Kh8 (9. Qg7? Qxg7+ 10. Kxg7 Ke6 and Black wins) Qf4 10. Kg8 Qg5+ 11. Kh8 Sb4!! and Black wins because stalemate with 12. ... Qxe7+ is no longer possible; if 7. Qxe6+ Kxe6 8. h7 Bf6 9. Qf7+ Kd6 10. Qf8+ Kd5 11. h8=Q Qg1+ 12. Kf7 Bxh8 13. Qxh8 Qc5 and Black wins)

5. h8=Q Sf5+

6. Kg8 Sxh6+

(6. Qxf5? Qxf5 7. Qg8 Bf6+ 8. Kf8 Bh8+ 9. Qf7+ Qxf7+ and Black wins)

7. Qxh6 Qxh6

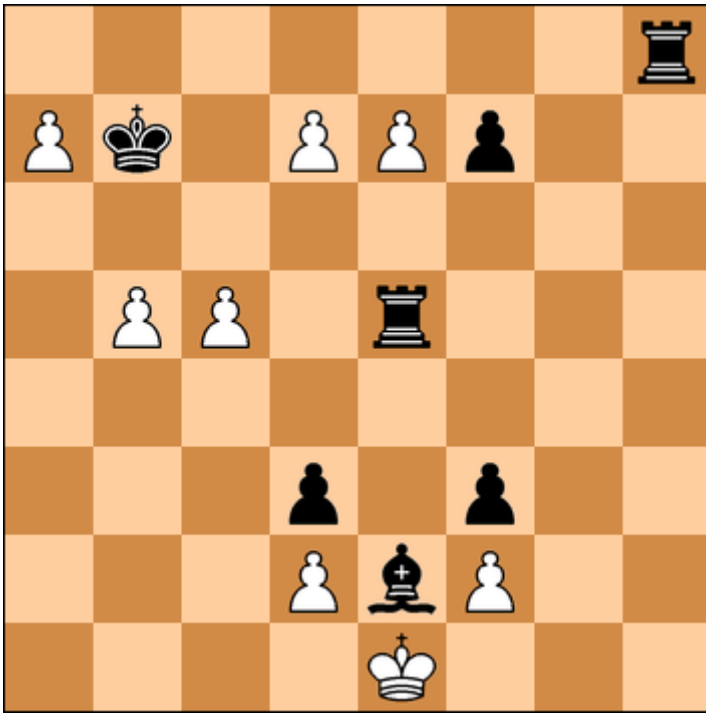
8. Qxe7+! Kc6

(8. ... Kxe7 stalemate)

9. Qxe5 Qg6+

10. Kh8 positional draw *(10. Kf8? Qd6+ and Black wins)*

FEN: 8/2k1b1KP/4q2P/p3p3/P4p2/P7/2n5/6Q1



8+7

=

White to move and draw

Composed by: **Daniele Gatti**

NUMBER 6

Published on [SPRINGAREN \(2018\)](#)

[Waiting for verdict](#)

Solution: 1. a8=Q+!

1. ... Rxa8

(1. ... Kxa8? 2. d8=Q+ and White wins; 1. ... Kc7?? 2. Qa7#)

2. c6+ Kb6 [threat 3. ... Ra1#]

(2. ... Kc7 3. d8=Q+ Rxd8 4. b6+ Kxc6 5. exd8=Q draw)

3. d8=Q+ Kxb5 [threat 4. ... Ra1#]

4. Qxa8 Rh5! [threat 5. ... Rh1#]

5. Qb8+! Ka4

(5. Qb7+? Kc4! 6. Qa6+ Kb3 7. Qb6+ Kc2 8. Qc5+ Rxc5 9. e8=Q Rh5 10. Qg8 Rh1+ 11. Qg1 Rxf1#)

6. Qf4+! Ka3

(6. Qa7+? Kb3! 7. Qb6+ Kc2 ...and the same variation as above)

7. Qd6+ Ka2

8. Qd5+! Rxd5

9. e8=Q Rg5 [threat 10. ... Rg1#]

10. Qxf7+ Kb1

(10. Qa8+? Kb3 11. Qb8+ Kc2 12. Qh2 Rb5 13. Qb8 Rxb8 14. c7 Rb1#)

11. Qb3+ perpetual check

FEN: 7r/Pk1PPp2/8/1PP1r3/8/3p1p2/3PbP2/4K3