

# Dragan Stojnić

## Moremovers for WCCI 2016-18

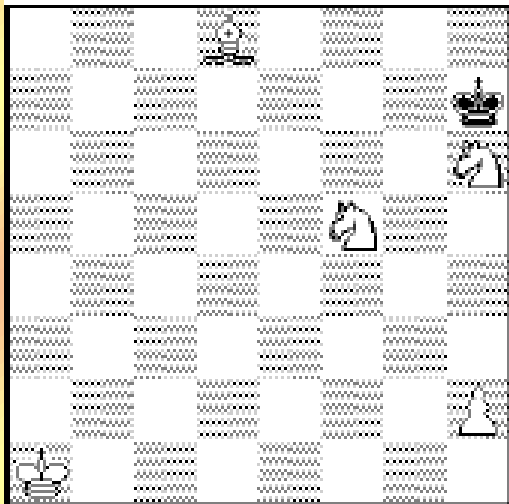


**Dragan Stojnić, SERBIA**

**Email adress: [draganstojnic@gmail.com](mailto:draganstojnic@gmail.com)**

1.

**The Macedonian Problemist 2018  
(No 55-56)**



#10

5+1

1. ♖b2! ♔g6! (1... ♗h8 & #9)

2. ♖c3 ♗h5 3. ♖d4 ♔g6  
4. ♖e5 ♗h5 5. ♘f7 ♔g~ 6. ♘g5  
6... ♗h5 7. ♖f6 ♔g4 8. ♖g6  
8... ♗f4 9. ♙c7+ ♔g4 10. h3#

Probably the longest correct  
direct problem with ♔ ♙ ♘ ♙  
♗+♔! (Author)

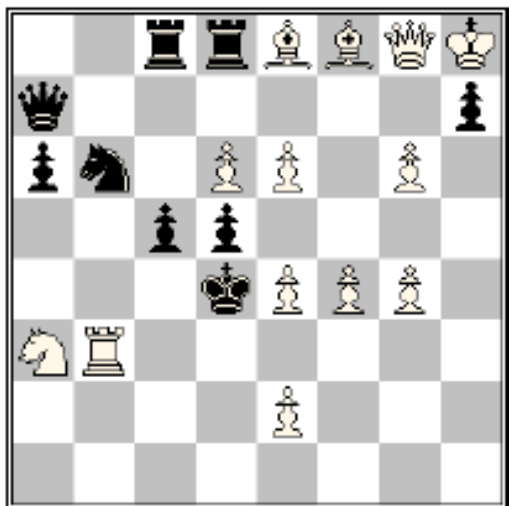
Valuable task for often used material in moremovers miniatures!

My research for longest such moremove:

- Wellknown problem by Kohtz and Kockelkorn , Dt. Wochenschach 1918, #10 with same material was many-cooked.
- In WinChloe database I found only one #10 setting by N.Sinoviev, but after the key material reduced to 2S+P+Kings (in fact it is only pseudo-task)

2.

32-34 pl. WCCT 2016-18



≠4

(13+9)

**1.g7!** [2. ♖d3+ ♔xe4 3. ♕xh7+ ♔xf4 4. ♕f5#]  
(1... ♕f7 2. ♖d3+ ♔xe4 3. ♕xf7 [4. ♕f5#])  
1...c4 2. ♘c2+ ♔c5 3. d7+ ♔c6 4. dxc8 ♕#  
(2... ♔xe4 3. ♕xh7+ ♔xf4 4. ♕f5#)  
1...dxe4 2. e3+ ♔d5 3. e7+ ♔xd6 4. exd8 ♕#

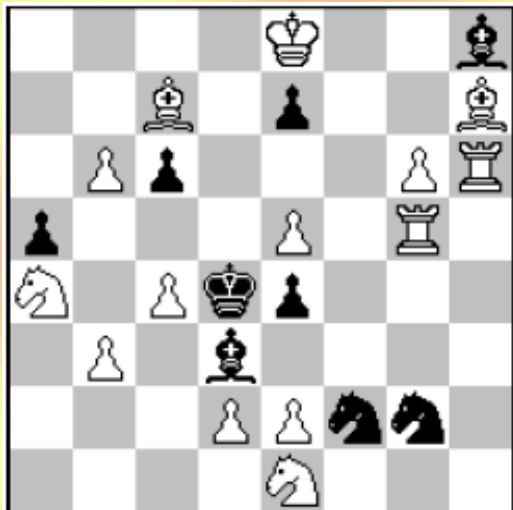
Successive pawn batteries producing dual-free W♕ promotion mates

Two cameleon-echo variants with promotions to WQs

3.

2nd Honourable Mention

3rd Tourney FRME, 2017



#4

14+9

Sol: 1.b7! – 2.Bb6+ c5 3.Bxc5#

1...e3 2.Sf3+ Ke4 3.g7+(A) Kf4 4.e6#(B)

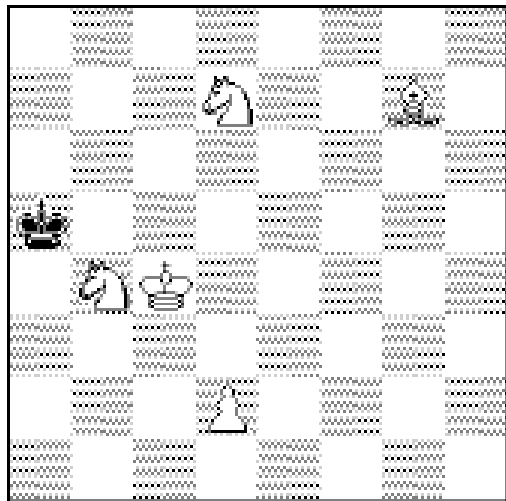
1...Bxc4 2.Sc2+ Kd5 3.e6+(B) Kxe6 4.g7#(A), 3...Be5 4.Rxe5#

Reciprocal Pawns batteries in two variants- difficult task

Славная игра пешечных батарей с чередованием третьих и четвёртых ходов белых.

4.

The Macedonian Problemist 2017  
(No 52-53)



#5      b) ♖g7→h4      5+1  
          c) ♔c4→a3

- a) 1. ♗b2! (zugzwang) ♔a4  
2. ♘c5+ ♔a5 3. ♗e5 ♔b6  
4. ♗b8 ♔a5 5. ♗c7# #
- b) 1. ♗e7! (zugzwang) ♔a4  
2. ♘d5 ♔a5 3. ♘b8 ♔a4  
4. ♘c3+ ♔a5 5. ♗d8#
- c) 1. ♗d4! (zugzwang) ♔b5  
2. ♘b6 ♔a5 3. ♘c8 ♔b5  
4. ♗b6 ♔c4 5. ♘d6#

A rare #5-rendering with tree  
twins & 2♘+♗+♔. (Author)

Ideal mate in c)solution;

It is curiosity – in each of twins one White unit move  
to end of he board (I-Bb8! II-Sb8! III-Sc8!)