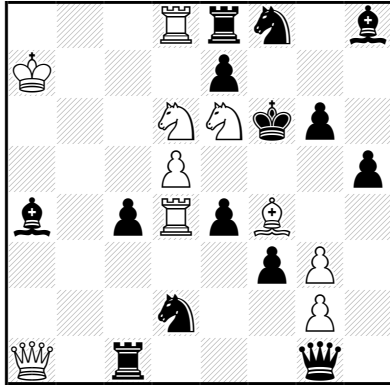


# No. 1



## Mate in 9 moves (10+14)

**Baku Chess Olympic Tourney 2016**

Published in: Yearbook 2016, Moscow 2016, p. 35-36

1<sup>st</sup> Honorable Mention

**Stanislav VOKÁL, Slovakia, 04401 Drienovec 536**

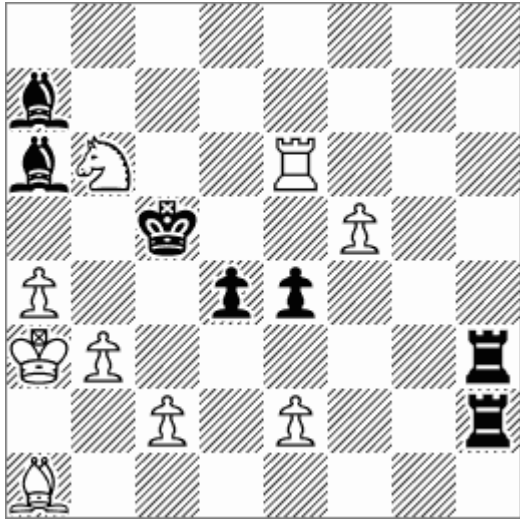
**e-mail: [stanislav.vokal@upjs.sk](mailto:stanislav.vokal@upjs.sk)**

**Solution:**

**1.Bg5+ Ke5 2. Sf7+ Kf5 3.Sh6+ Ke5 4.g4! (~ 5.Sf7x) hxg4 5.Sxg4+ Kf5**  
**6.Sh6+ Ke5 7.g4!! Qxg4 8.Rxe4+! Kxe4 9.Sc5x (model mate)**

*«Logical problem with sacrifices of two pawns. Very pleasant is model mate in center of the board.» - from the judge's comments*

## No. 2



### Mate in 9 moves (9+7)

FIDE Olympic Tourney in Composing, Batumi, 2018

1. Commendation

Stanislav VOKÁL, Slovakia, 04401 Drienovec 536

e-mail: [stanislav.vokal@upjs.sk](mailto:stanislav.vokal@upjs.sk)

Try:

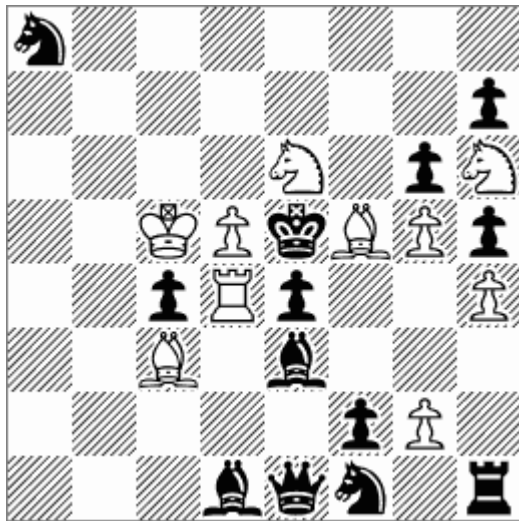
1.b4x?(white pawn is pinned by black Rh3)

Solution:

1.Sd7+ Kd5 2. Sf6+ Kc5 3.Sxe4+ Kd5 4.Sf6+ Kc5 5.Sd7+ Kd5 6.e4+!  
dxe3 e.p. 7.c4+! Bxc4 8.Sf6+ Kc5 9.b4x! (model mate)

*«Предварительным маневром коня, белые уничтожают черную пешку e4, перекрытием черной ладьи взятием на проходе развязывают белую пешку, блокируют поле c4 и завершают финалом с правильным матом. - By a preliminary maneuver of the knight, White destroys the black pawn e4, by interruption of the black rook with en passant capture unpinnes the white pawn, blocks the c4-square and finishes with the model mate.» - judge's comments*

## No. 3



### Mate in 6 moves (10+13)

The Problemist, Vol.26, No.3, May 2017, p.97  
№C11572

Stanislav VOKÁL, Slovakia, 04401 Drienovec 536  
e-mail: [stanislav.vokal@upjs.sk](mailto:stanislav.vokal@upjs.sk)

#### Tries:

1.Kc6? ~ 2.Rxe4x, but 1. – Ba4+!

1.Bg4? ~ 2.Sf7x, but 1. – hxg4!

1.Bh3?, but 1. – Rxh3!

1.Bxg6?, but 1. – hxg6!

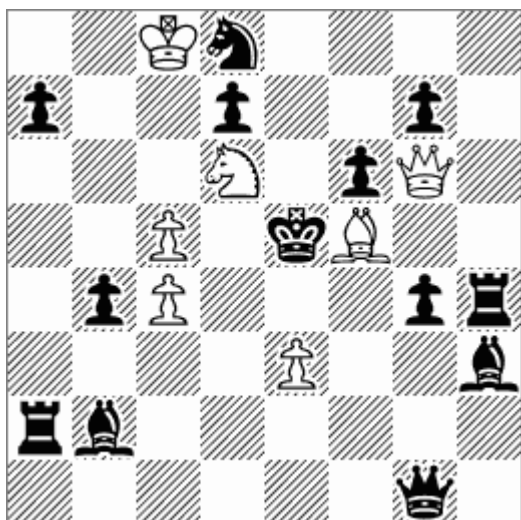
1.Bxe4?, but 1. – Bxd4+!

#### Solution is:

1.g4! (~ 2.Sf7x) hxg4 2.Bxg4! (~ 2.Sf7x) Bxg4 3.Sf7+! Kf5 4.Sd6+! Ke5  
5.Kc6!! (~ 6.Rxe4x) Bxd4 6.Bxd4x

*«Deep foreplan to block g4 then free the battery.» - comment in Vol.26,  
No.6, Nov. 2017*

## No. 4



### Mate in 6 moves (7+13)

5<sup>th</sup> FIDE World Cup 2017

4<sup>st</sup> Honourable Mention

Stanislav VOKÁL, Slovakia, 04401 Drienovec 536

e-mail: [stanislav.vokal@upjs.sk](mailto:stanislav.vokal@upjs.sk)

#### Solution:

1.Bd3? ~ 2.Qe4x, Qf5x, but 1. – g3!

1. – Qxe3 2.Qf5+ Kd4 3.Sb5x

1.Bxg4? ~ 2.Qe4x, Qf5x, but 1. – Qxg4!

1. – Qxe3 2.Qf5+ Kd4 3.Qd5+ Kc3 4.Sb5+ Kb3, Kc2 5.Bd1x, Qd1x

1.Be6! ~ 2.Qe4x, Qf5x

1. – g3! 2.Bg4! Qxe3 3.Qf5+ Kd4 4.Qd5+ Kc3 5.Sb5+ Kb3 6.Bd1x, 5. – Kc2 6.Qd1x (model mates)

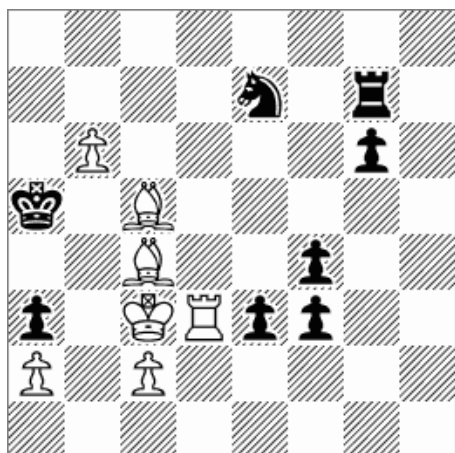
1. – Qxe3 2.Qf5+ Kd4 3.Sb5x

1. – Qb1 2.Qxb1 g3 3.Bg4 and 4.Qe4x, Qf5x

2. – Kxe6 3.Qf5+ Ke7 4.Qxd7+ Kf8 5.Qxd8x, Qe8x

«Logical problem with Nowotny on the 2nd move and two model mates in the same field. – Логическая задача с осуществлением перекрытия Новотного на втором ходу и финалом с двумя правильными матами на одном поле.»

## No. 5



### Mate in 5 moves (7+8)

**Moscow Tourney 2017**

**5. Commendation**

**Stanislav VOKÁL, Slovakia, 04401 Drienovec 536**

**e-mail: [stanislav.vokal@upjs.sk](mailto:stanislav.vokal@upjs.sk)**

**Set play:**

**1. – Sd5+ 2.Rxd5 Rc7 3.bxc7 etc. (2. – Ka4 3.Bb4 ~ 4.Bb3x, 2. – Rd7 3.Rxd7 ~ 4.Ra7x)**

**1. - Sf5 2.Rd8 ~ 3.Ra8+ Ra7 4.Rxa7x, 2.- Ra7 3.bxa7 ~ 4.a8Qx, 2.- Rg8 3.Rxg8 ~ 4.Ra8x**

**Solution:**

**1.Kd4! (~ 2.Rxa3x)**

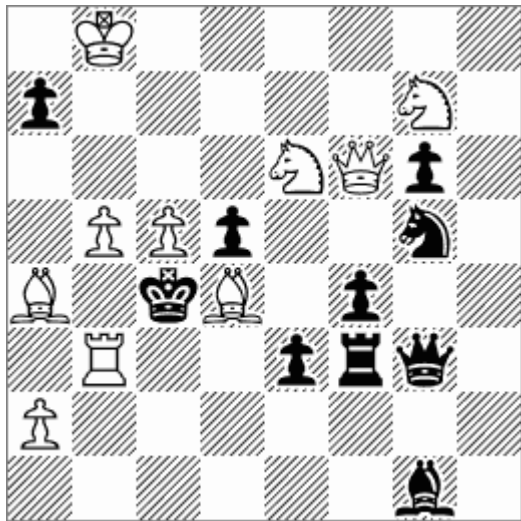
**1. - Sf5+! 2.Ke5! Re7+ 3.Kf6! Rf7+/Re6+ 4.Kg5! and 5.Rxa3x**

**1. – Sc6+! 2.Ke4! Re7+ 3.Kxf4! Rf7+/g5+ 4.Kg3! and 5.Rxa3x,**

**3. – Re4+ 4.Kxe4 and 5.Rxa3x**

*«Chess provocation. Rd3 is a strong and set plays indicate that she might want to attack from above. But his advantage has also the attack after the third row after the king's walk away to d4. Thereby the king gets under the firing of the rider's chess and also the tower's, and he has to choose very well where to hide. When the rider fired at f5, he will allow the white king to hide himself at g5. Chess on c6 again means that the black rider will not reach g3, so there is security in the second variant. A somewhat unusual type of fivemover with a perpetual threat of Vxa3x, but has its logic and value greatly augmented by the fact that the theme is processed in two variants in parallel.» - comments on the web page of the Slovak Organisation for Chess Composition (Jan 2, 2019)*

## No. 6



### Mate in 4 moves (10+10)

Die Schwalbe, Heft 284, Band XXXIII, April 2017,  
p.93, №16998

Stanislav VOKÁL, Slovakia, 04401 Drienovec 536  
e-mail: [stanislav.vokal@upjs.sk](mailto:stanislav.vokal@upjs.sk)

#### Tries:

1.b6? – a6!

1.Ba1?/ 1.Bb2? ~ 2.Qc3x, Qd4x, but 1. – e2!

1.Bxe3? ~ 2.Qc3x, Qd4x, but 1. – fxe3+!

1. – Bxe3 2.Qc3x, 1. – Rxe3 2.Qd4x

1.Sf5? – gxf5!

#### Solution is:

1.Se8! (~ 2.Sd6x) Se4 2.Sd6+ Sxd6 3.Bxe3!

(~ 4.Qc3x, Qd4x, 3. – Bxe3, Rxe3 4.Qc3x, Qd4x)

3. - Sxb5! 4.Bxb5x

(1. - Sf7 2.Qxf7 and 3.Sd6x)

«Brunner-Dresdner»