

Emanuel Navon
WCCI 2016 - 2018
#2

Emanuel Navon Arlosorov 108 Holon 5838407 **Israel**
emanuelnavon@gmail.com

16/5/18
7/18
645 ♣

Emanuel Navon – Israel
Bit 2018
(V) M Kovačević
2nd HM

	<p>5/18 761 n</p> <p>Try: 1. exf5? [2. Qe4 [A] #] 1. ... Bd3/d5 2. Q(x)d5# But 1. ... Re1!</p> <p>Try: 1. Qc3? ad lib 2. Sf3# But 1. ... fxe4 [a] !</p> <p>Try: 1. Qd3? [2. Sf3 #] 1. ... fxe4 [a] 2. Qxe4 [A] # But 1. ... Bh4 [b] !</p> <p>Try: 1. Qe3? [2. Sf3 #] 1. ... fxe4 [a] 2. Qxe4 [A] # 1. ... Bh4 [b] 2. Qxf4 [B] # But 1. ... Be2 [c] !</p> <p>Sol: 1. Qh5! [2. Sf3 #] 1. ... fxe4 [a] 2. Bh4 [C] # 1. ... Bh4 [b] 2. Qxh8 [D] # 1. ... Be2 [c] 2. Qe8 #</p>
<p>(8+11) #2</p>	
<p>Emanuel Navon Israel Bit 2018 2nd HM Ver.. Judge M.Kovachevich..</p>	

Three beautiful mating moves complete spectacular solution. and change two mates. I would rather exclude two tries with dualistic threats and opt for a position like in the Annex (see right column), preserving unity of the content.

Judge: **Marjan Kovačević**

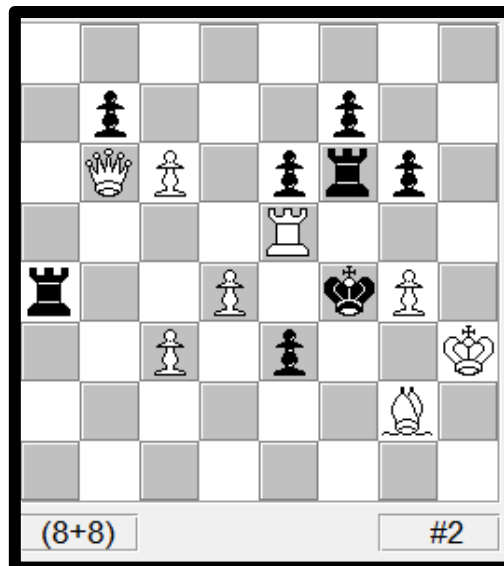
Group A – #2

Thematic condition: Spectacular key + thematic try-play. A white piece controlling at least 2 squares around bK (Example 1), or having possibility of giving at least 2 mates (Example 2) "withdraws completely from the scene" after the key-move. Composers (and judge) are free to value the spectacular character of the withdrawal. Additional condition is presence of at least one thematic try (as in Example 2, but not in Examples 1).

686 n 9/4/16
695 g

Emanuel Navon
Israel
TT 164 Superproblem 3/2016

3rd Prize



Try: 1. Qc7(**X**)? [2. Rf5(**A**)#]
But 1. ... e2!

Try: 1. Qc5? [2. Re4(**B**)#]
1. ... Rxd4 2. Qxd4#
But 1. ... Rf5(**a**)!

Try: 1. d5? [2. Qxe3#]
1. ... Kxe5 2. Qc7(**X**)#
1. ... Rd4 2. Qxd4#
But 1. ... Re4(**b**)!

Sol: 1. Qd8! [2. Qxf6#]
1. ... Rf5(**a**) 2. Re4(**B**)#

X1 = e5: 1 W(A) 2 B(a)
X2 = d4: 2 W(B) 1B(b)

Award

Doubling of the theme is realized slightly schematic (in the solution there is only one variation), but in a mechanism of "officers" fully!

Theme: At least three thematic phases that is connected by thematic square X and thematic pieces A and B of the same type. Connection is the follow: - in 1st phase there is a move of piece A to square X; - in 2nd phase there is the same move of piece A to square X, but its function is another; - in 3rd phase there is a move of piece B to square X. Pawns as A and B are allowed. Repetition of thematic variations in different thematic phases are not allowed. Also captures on square X and duals of all kinds (including "black" duals) are not allowed in thematic variation

Emanuel Navon
 Israel
 StrateGems 2016
 Vol. 19 October-December 2016 SG76

T0993 6th HM



#2

C+

10+12

Try: 1. Bh4? [2. Be7#]

1. ... Bf6 [a] 2. Rxe6 [A] #

1. ... Rf6 [b] 2. Qxe5 [B] #

But 1. ... Rxe4 !

Try: 1. Sf6[X]? [2. Rxe6 [A] , Qxe5 [B] #]

But 1. ... Bxe8!

Try: 1. Rf6[Y]? [2. Rxe6 [A] , Qxe5 [B] , Bxe5 #]

But 1. ... Rxe4 !

Sol: 1. Qd4! [2. Qc5#]

1. ... exf4 2. Sf6[X]#

1. ... exd4 2. Rf6[Y]#

Emanuel Navon - T0933

1.Bh4? exploits the Novotny cutting-point at f6, and then other exploitative tries 1.Sf6? and 1.Rf6? become post-key mates – a nice idea. In the circumstances, the sacrifice of the WQ is a good key, and the Q+S or B+R batteries open to thematic effect .
 Judge

24/1/17 610 ♁

Emanuel Navon
Israel
TT 182 Superproblem 1/ 2017

3rd HM

	12/16 n 712 n
	Set : 1.- exf6 2. Bxf6# 1.- Qe1+ 2. Bc3#
	Try: 1. Re5? [2. Be3#] 1.- Qxd3 2. Rd5# 1.- Qe1+ 2. Bc3# 1.- Qxe5+ 2. Bxe5# 1.- S~ 2. R(x)b8(A)#
	But 1.- exf6!
	Sol: 1. Rxc7! [2. Rc8#] 1.- Qg5+ 2. Be5# 1.- Qxc7+ 2. Bb6# 1.- Qe1+ 2. Bc3# 1.- Sxc7 2. Rb8(A)# 1.- Qxe5+ 2. Bxe5#
(9+6)	#2
Emanuel Navon Israel TT 182 Superproblem 1/2017	

Duel bQ-wB with wB-moves into three different directions, and with a good try.
Judge

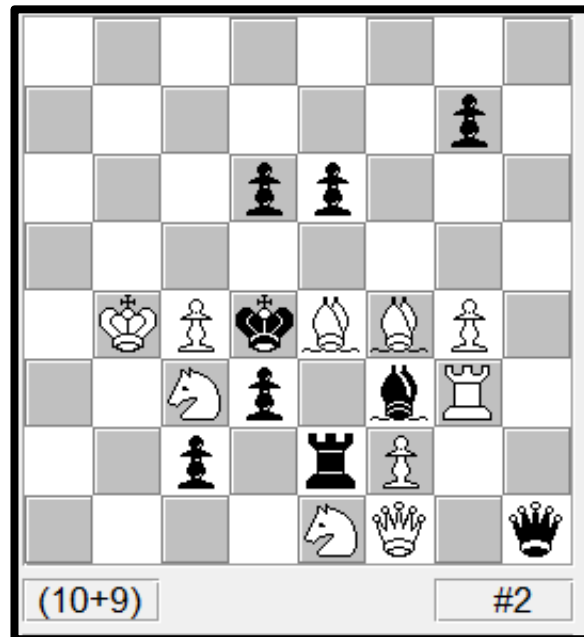
Theme: The key allows Black to execute **at least one more check** than in diagram position. In variations of actual play, **at least three** Black checks are responded by different **non-capturing** mating moves of the same Q+B or R+B battery.

Additional requirement: if in diagram position the checks to White King and/or the moves of Black King are possible then White **must have responses to all** these checks and/or moves. It is preferred that there is at least one any (thematic or non-thematic) try with a **not-too-bad refutation**, but this is not obligatory.

20175/ 727 n
30/5/17 616 9

Emanuel Navon
Israel
Bit 2017

COMM



Try: 1. Be~ c6-a8/h7? [2. Sb5#]
But 1.- d5/g6!

Try: 1. Bxd3? [2. Sb5#]
1.- Bc6(a) 2. Sxe2(A)#
1.- Re5(b) 2. Sxc2(B)#
But 1.- Qh5!

Sol: 1. Bg6! [2. Sb5#]
1.- Bc6(a) 2. Rxd3(C)#
1.- Re5(b) 2. Qxd3(D)#
1.- Qh5 2. Sxf3#

Two changed thematic variations from solution to the try that obstructs potential mating square.

Judge: M Kovačević

Thematic condition: Double White-Black gate-opening: Solution begins with simultaneous opening of two (or more) black lines. Black pieces use this effect as double gate-opening, to create variations by moving over critical field vacated by the white key-piece.

18/11/15
5959

Emanuel Navon
Israel
StrateGems 2016
Vol. 17 4-6 2016 SG74

T0916

	633 ♠ 8.2014
	Set: 1. ... Rf1 [a] 2. Se5 [A] # 1. ... Rh1[b] 2. c8=Q[B]# 1. ... c2 [c] 2. Sb2 [C] #
	Try: 1. Sf4? [2. Bd3 [D] #] 1. ... c2 [c] 2. Qd3 [E] # But 1. ... axb5!
	Sol: 1. Sc5! [2. Qd3 [E] #] 1. ... Rf1 [a] 2. Bd3 [D] # 1. ... Rh1[b] 2. Sd6[F]# 1. ... Sd2 2. Rxc3[Sa3?] #
(14+8) #2 W Emanuel Navon Israel	

This is a splendid! I love the change of threat based on change of flight, the rest of the changes and the extra bit of dual avoidance in the final variation. I think solvers and judge will enjoy this. Yes, 22 men, but a wealth of beautiful play best.

Eugene

the changed play for the three thematic defenses is entertaining. Note the pseudo Le Grand pattern in the last two phases.