

Section: Retros

Entries from Mikhail Kozulya (Baranikovka, Lugansk province, Ukraine)

mimikons@ukr.net

1.

*Die Schwalbe* Heft 272, April 2015

No. 16299, p. 92

Solution: *Die Schwalbe* Heft 275, October 2015, p. 292

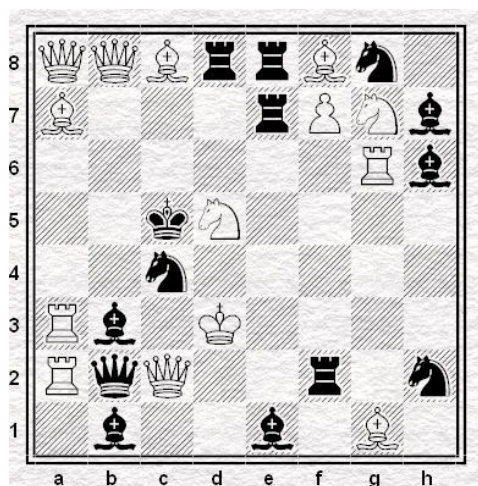
A	A	E	b	b	E	d	
E				b	C	D	e
						B	e
		f	D				
		d					
B	e		F				
B	a	A			b		d
	e			e		E	

14+14 Uppercase letters stand for white pieces;

lowercase letters, for black pieces.

Last move?

Solution:



14+14

Retract: 1.**Rb6-g6+!** Re4-e7+! (1...Rf5-f2+? 2.Se3-d5+ Sd6-c4+ 3.Q~-c2+ ??) 2.Se7-d5+ Sd6-c4+ 3.Qd1-c2+ Rc2-f2+ 4.Ke3-d3+ Rf4-e4++

Try: 1.Sb6-d5+? Sd6-c4+ 2.Qd1-c2+ Rc2-f2+ 3.Ke3-d3+ ??

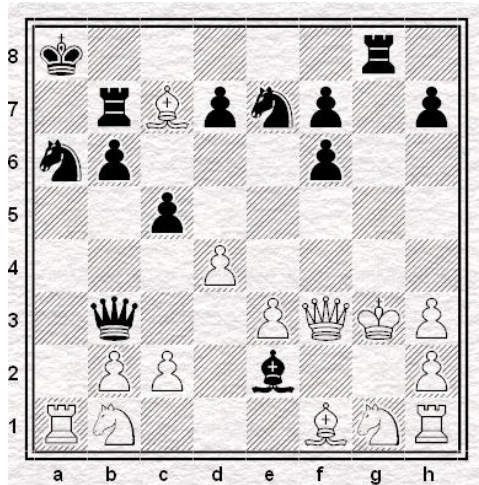
2.

*StrateGems* 70, Vol. 18, April-June 2015

No. P0399, p. 92

Solution: *StrateGems* 72, Vol. 18,

October-December 2015, p. 206



14+13 SPG in 20.0 moves C+

Solution:

- |            |        |              |         |            |        |
|------------|--------|--------------|---------|------------|--------|
| 1. Pf2-f4  | Pg7-g5 | 2. Pf4-f5    | Pg5-g4  | 3. Pf5-f6  | Pe7xf6 |
| 4. Pa2-a4  | Bf8-c5 | 5. Pa4-a5    | Bc5-b6  | 6. Pa5xb6  | Pc7-c5 |
| 7. Pb6xa7  | Qd8-b6 | 8. Pd2-d4    | Qb6-b3  | 9. Bc1-f4  | Pb7-b6 |
| 10. Pe2-e3 | Bc8-a6 | 11. Qd1-f3   | Ba6-e2  | 12. Ke1-f2 | Sb8-a6 |
| 13. Kf2-g3 | O-O-O  | 14. Pa7-a8=S | Sg8-e7  | 15. Sa8-c7 | Kc8-b8 |
| 16. Sc7-d5 | Kb8-a8 | 17. Bf4-c7   | Rd8-b8  | 18. Sd5-f4 | Rb8-b7 |
| 19. Sf4-h3 | Pg4xh3 | 20. Pg2xh3   | Rh8-g8+ |            |        |

3.

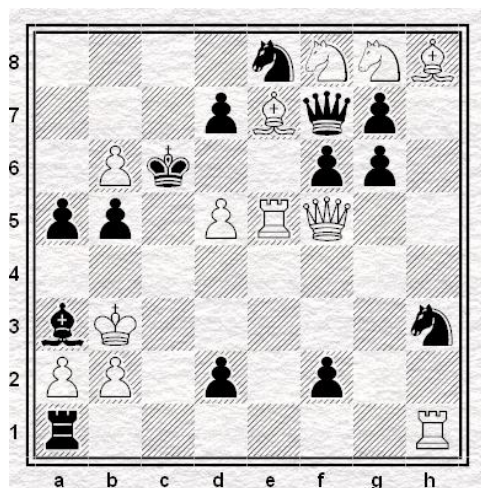
*feenschach* Heft 213, Mai-June 2015

No. 11187, p. 137

				c	C	C	D
			f	D	a	f	
	F	e			f	f	
f	f		F	B	A		
d	E						c
F	F		f		f		
b							B

12+14 Last move?

Solution:



12+14

In fact, three last single moves are unique:

retract 1.e4:Ld5+ Le6:Ld5+ 2.Lc4-d5+

Try: A/a = K/k.

In the diagram position of the rebus, the sides' balances are not closed; this is a new feature for retro rebuses.

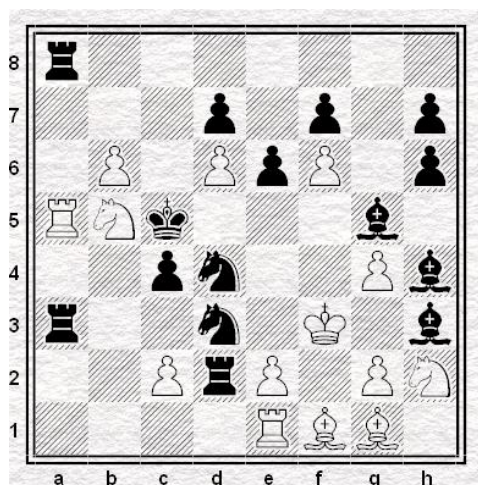
4.

*feenschach* Heft 213, Mai-June 2015

No. 11186, p. 137

C							
			L		L		L
	K		K	L	K		L
D	H	A				E	
		L	G			K	E
C			G		B		E
		K	C	K		K	H
				D	F	F	

29+0 Last move?



14+15

Retract: 1...**Sb3-d4+**! 2.Ke3-f3+ Sf4-d3+