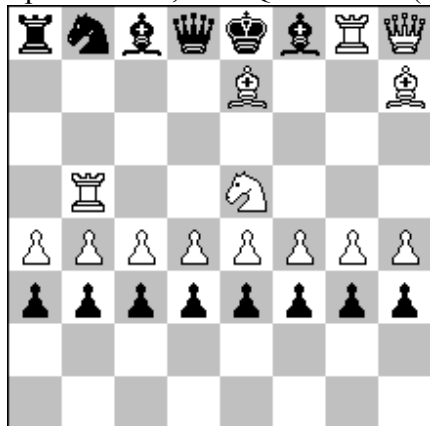


#2.

Vlaicu Crisan

vlaicu_crisan@yahoo.com

Special Prize, TT8 Quartz 2012 (v) Quartz 39 / Feb. 2014



SPG 24.0 Memory Circe StafettenSchach

(14 + 14)

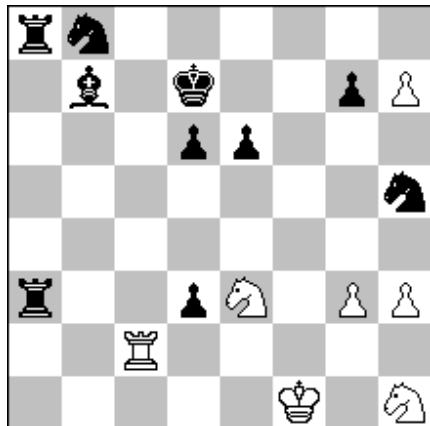
1.h4 g5 2.Rh3 gxh4 3.Rg3 h3 4.Rxg8(+Ph4) h5 5.g4 hxg4 6.e4 g3 7.Qh5 d5 8.Qxh8(+Pg4) d4
9.c4 dxc3 e.p. 10.f4 e5 11.Sf3 exf4 (+Pc4) 12.Se5 f3 13.d4 f5 14.Bg5 fxe4(+Pf4) 15.Be7 e3
16.Bd3 c5 17.Bh7 cxd4(+Pe4) 18.a4 d3 19.Ra3 b5 20.Rb3 bxa4(+Pd4) 21.Rb5 a3 22.b4 a5
23.Sd2 a4 24.Sb3 axb3(+Pa4)

#3.

Vlaicu Crisan

vlaicu_crisan@yahoo.com

2nd HM Julia's Fairies 2014 – 01.05.2014



-6 & #1 Proca Retractor Circe Assassin
(7 + 10)

- 1.g6xRh7(Ra8, -wBa8) Ba6-b7+
- 2.f5xg5(pg7) ep. g7-g5
- 3.Kf2-f1 e7-e6+
- 4.Sf1xpe3(pe7, -wSe7) e4-e3+
- 5.Kg2xSf2(Sb8, -bSb8) Sf6-h5+
- 6.Qb1xSb8(-wQb8) &
1.Rc8+ Sxh1(Sb1, -bQb1)#

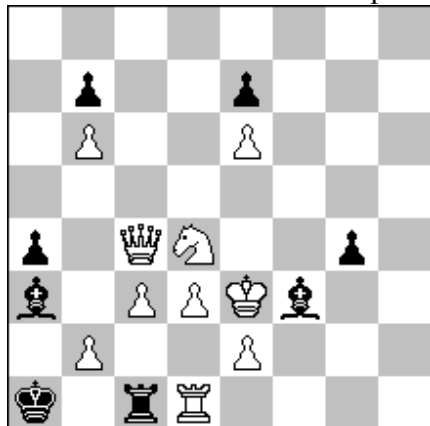
Judge: An unbelievable wild west story! The solution makes such massive use of fairy elements that we were unable to cook this problem although it was, without doubt, the most suspicious entry. We are still convinced that the problem is not sound, but we failed to find a cook. We did, however, analyse a huge amount of possibilities. These show that the author was extremely efficient in the implementation of fairy effects. One surprise follows the next one, it's sheer lunacy! The fairy chess and retro creativity invested pays back in a deserved high distinction, although it is difficult to describe the (strategic) content.

#4.

Vlaicu Crisan

vlaicu_crisan@yahoo.com

2nd HM 3rd FIDE World Cup in Composing 2013



-9 & s#1 Proca Retractor Circe Assassin
(10 + 8)

1.d5xe5 e.p. (+bPe7) e7-e5
2.Kd2xPe3 (+bPe7, -wBe7) f4xe4e.p. (+wPe2)+
3.e2-e4 Re4xe2(+wPe2, -bRe2)+
4.Kc2-d2 Rb1-c1+
5.Kb3-c2 a5-a4+
6.c5xb5 e.p.(+bPb7) b7-b5
7.Kc2xPb3(+bPb7, -bBb7) a4xb4 e.p.(+wPb2)+
8.b2-b4 Rb4xb2(+wPb2, -bRb2)
9.Sb5-d4 &
1.Rxb1(+bRa8) Rxb5 (+wSb1, -wRb1)#

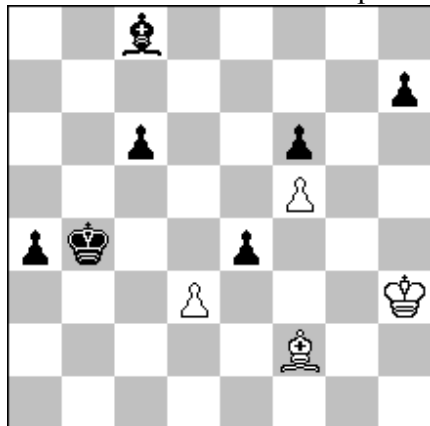
Judge: The play is entwined around four en-passant captures, two by each side, which is probably new in Circe Assassin Procas. Usually en-passant captures are quite brutal, since they permit only one retracting move, but there are also two black en-passant captures, so I do not consider this to be a major defect. Rather the motivation for the exact black retracting move after the white pawn double step is not that easy to achieve. The play is quite symmetric with respect to the mirror line (between c and d file), but it is nicely interrupted by adding bishops of different colour to guard the flights an c1 and d2, respectively. Many fairy-specific effects (e.g. active suicide on B3 and B8) are shown and the play is nicely distributed over all pieces.

#5.

Vlaicu Crisan

vlaicu_crisan@yahoo.com

1st HM 4th FIDE World Cup in Composing 2015



-8 & s#1 Proca Retractor Circe Assassin
(4 + 7)

- 1.Kg2xPh3(ph7, -wPh7) h4-h3+
- 2.g6xBh7(Bc8, -bBc8) Bg8-h7+
- 3.g5-g6 f7-f6+
- 4.Kf3-g2 e5-e4+
- 5.Ke2xf3(pf7, -bPf7) f4-f3+
- 6.Kd1xBe2(Bc8, -bBc8) Bf1-e2+
- 7.Bb6xf2(pf7, -wQf7) Bh7-g8+
- 8.Qa2xBf7(Bc8, -bSc8) &
1.Qb2+ Bb3#

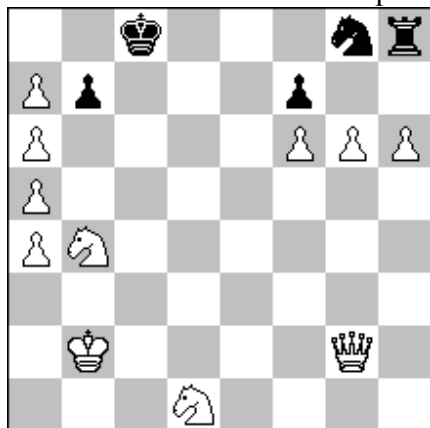
The difficult Matreshka theme on three different squares: h7 (bP, wP and bB), f7 (bP, bP and wQ) and c8 (bB, bB, bB and bS).

#6.

Vlaicu Crisan

vlaicu_crisan@yahoo.com

15553. Die Schwalbe 260 / Apr. 2013



-7 & s#1 Proca Retractor Circe Assassin
(11 + 5)

1.g5xf5(pf7) ep. f7-f5

2.Sd3xRb4(Rh8, -bBh8) Rd4-b4+++

3.Ka2xpb2(pb7) Rd8-d4+

4.Kb1xSa2(Sg8, -wSg8) **0-0-0**++

5.g7-g8=S b3-b2

6.Sb2xRd1(Ra8, -bQa8) **d2-d1=R**++

7.Rf3xf7(pf7, -wRf7) &

1.Re3+ Qe4#

Theme Valladao: prise en passant, long castling and two promotions. Black is in an unexpected zugzwang after white's 5th move retraction. Two passive annihilations (bBh8, bQa8) and two suicides (wRf3, wSg8). Specific mate by active selfpin of bQ.