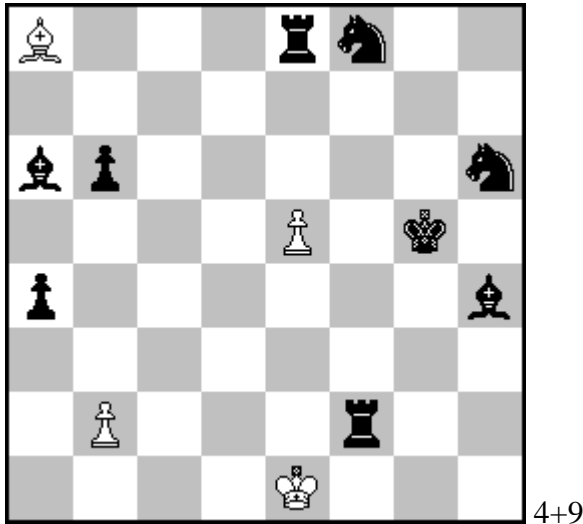


Entries for WCCI and FIDE-Album 2013-15

Klaus Wenda

-12 & #1 Proca AntiCirce



[abbreviation of pieces in German K,D,T,L,S,B]

Mainplan:

1.Kd7:Le6(Ke1)? Lg8-e6+ 2.Ke6-d7 & 1.Kf5+ Kh5!

In the foreplan W is winning a tempo to move Lf3-a8 guarding h5.

Solution:

1.Ke1:Bd2(Ke1)! d3-d2+ 2.Ke2:Td1(Ke1) Te7-e8+ [Antizielelement, while e8 has become empty; the intended mate 12.Kf5# would be illegal] 3.Ke1-e2 Td2-d1+ 4.Kd7:Le6(Ke1)! Lg8-e6+ 5.Lf3-a8 Te6-e7+! [5...Te8-e7+? 6.Ke6-d7 & 1.Kf5#]. The wL has now arrived f3 but W must decoy the black T back to e8 using a draw-pendulum: 6.Kd6-d7 Te7-e6+ 7.Bc4:Sb5(b2)! S~-b5+ 8.Kd7-d6 Te6-e7+ 9.Kd6-d7 Te7-e6+ 10.Kd7-d6 Te6-e7+ 11.Kd6-d7 Te8-e6+ [forced] 12.Ke6-d6 & 1.Kf5#

...7.Bc6:Sb7(b2)? Sd8-b7+!... [12.Ke6-d6?? would be illegal, the double check by L/T cannot be abolished.]

...4.Kd7:De6? Dg8-e6+ 5.Lf3-a8 Te6-e7+ 6.Kd6-d7? Dh8-g8+!

Dittmann MT 2014-15, 3.Comm.

Award Schwalbe 273/2015, Judge T.Brand

Entry H 1 for WCCI and FIDE-Album 2013-15 Retro Section

Klaus Wenda

Rasumofskygasse 28, 1030 Vienna, Austria

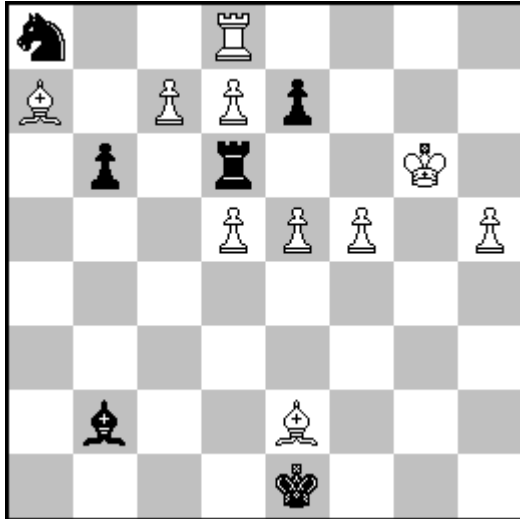
kreuzschach@a1.net

Entries for WCCI and FIDE-Album 2013-15

Klaus Wenda

-6 & r#1 Hoeg AntiCirce Calvet

Günther Weeth zum 80.Geburtstag gewidmet



10+6

[abbreviation of pieces in German K,D,T,L,S,B]

Mainplan:

1.Kh6-g6 f7:Te6(e7)+ 2.e4-e5? & 1.Tf6 L:f6(Lf8)#??

But there are 2 flights g5/h7. White's goal is to block those flights and to win 4 new pieces (S,T,L,S) by black uncaptures. Black Forward Defense must be avoided. Thus W must prevent the uncapture of a wD on the 6.rank

[1...f7:Df6(e7)? & 1.b5 D:T(Dd1)# [FD while f2 is guarded].

As well...f7:Se6(e7)? is weak. Shifting back the uncaptured S from the 6th rank either obstructs the mate or allows a new FD due to the stipulation reflexmate [...b5 Sd3/Sf3/Sg2#].

Solution:

1.Kh6-g6! f7:Te6(e7)+ 2.Te8-e6 e7:Sf6(f7)+ 3.Sh7-f6 f7:Te6(e7)+ 4.Te7-e6!

[now the square g7 is free for the wB] **g7:Lf6(f7)+! 5.Lg5-f6 f7:Sg6(g7)+ 6.e4-e5 & 1.Sh8 L:h8 (Lf8)#**

[The initially intended move...5.Lg5-f6 f7:Tg6(g7)+? 6.e4-e5 & 1.Tf6 L:f6(Lf8)# would be illegal; there are 14 w units on the board and only D+S are left for uncapture.]

Die Schwalbe 275/2015 Nr.16498

Entry H 2 for WCCI 2013-15 and FIDE-Album 2013-15 Retro Section

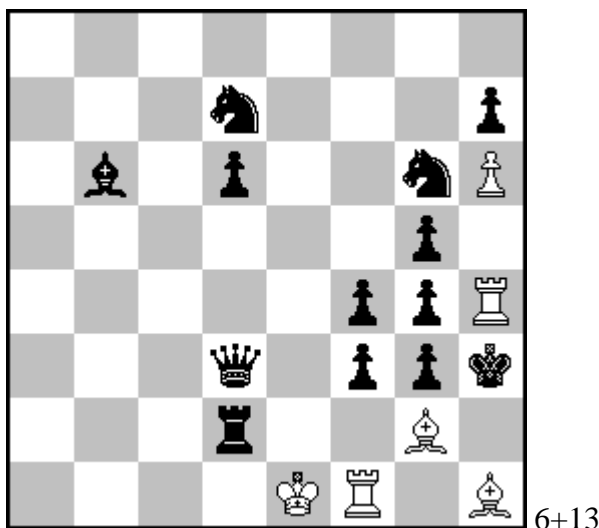
Klaus Wenda Rasumofskygasse 28, 1030 Vienna Austria
kreuzschach@a1.net

Entries for WCCI and FIDE-Album 2013-15

Klaus Wenda

-8 & #1 Proca AntiCirce Cheylan without FD

bernd ellinghoven zum 60. Geburtstag gewidmet



[2 w Bishops on w squares, abbreviation of pieces in German K,D,T,L,S,B]

Thematical Try I: 1.Kg1:Df2(Ke1)? Ld8-b6+ 2.h5-h6? De1-f2! [avoiding w retro-stalemate] 2...g7:Xh6(h7)? illegal, while b Pawns would have captured 11 times] 3.Kh2-g1 De8-e1+ 4.Kg1-h2+ De1-e8 5.Kh2-g1 De8-e1+ 6.Kg1-h2+ De1-e8 7.Kh2-g1 ?? White was not allowed to start the pendulum considering the necessary consequence that the same position would occur 3 times. White's aim is now to uncapture another b unit which should enter the square e1 instead of black Queen.

Thematical Try II: 1.Ke1:Td1(Ke1)! Sh8-g6+ 2.Kg1:Df2(Ke1)? Ld8-b6+ 3.h5-h6 De1-f2 [avoiding w retro-stalemate] 4.Kh2-g1 De8-e1+ 5.Kg1-h2+ De1-e8 6.Kh2-g1 De8-e1+ 7.Kg1-h2+! Te1-d1! [forced] 8.Kh2-g1 & 1.T:e1(Ta1)# [When Black answers...3.h5-h6 Te1-d1 it is the Rook which moves instead of the Queen and after ...7.Kg1-h2+ De1-f2! follows 8.Kh2-g1 & 1.T:e1(Ta1)# as before.] But Black by moving back 1...Sh8-g6+ has got control over the square f7 connected with a new defense:...3.h5-h6 De2-f2!! interrupting the line of Td2. Now the check by black Pawn g3 can be abolished and the position can be released by the forced moves ...4.Kf2-g1! Sf7-h8+!! etc.

Solution: 1.Ke1:Td1(Ke1)! Sh8-g6+ 2.Kg1:Lf2(Ke1)! Sf8-d7+ 3.h5-h6 Te1-d1 4.Kh2-g1 Te8-e1+ 5.Kg1-h2+ Te1-e8 6.Kh2-g1 Te8-e1+ 7.Kg1-h2+ Le1-f2 [forced] 8.Kh2-g1 & 1.T:e1(Ta1)#

Entries for WCCI and FIDE-Album 2013-15

In comparison with Try II black cannot interrupt the line of Td2 and is unable to abolish a selfcheck...4.Kf2-g1? The try to parry ...3.h5-h6 e2-e1L? fails (illegality of the pawn-structure).

Theme: Draw-pendulum. White uncaptures the black piece which is carrying out the pendulum (Td1) as well as the piece replacing Td2 which moves to avoid the 3rd appearance of the same position (Lf2). The strategic goal of the draw-pendulum is the temporary occupation of e1/e8 in order to allow an approach of the 2 Kings without selfcheck and to prevent white retro-stalemate in preparation of a KK-mate in the forward play.

feenschach issue 202/2013, p.246

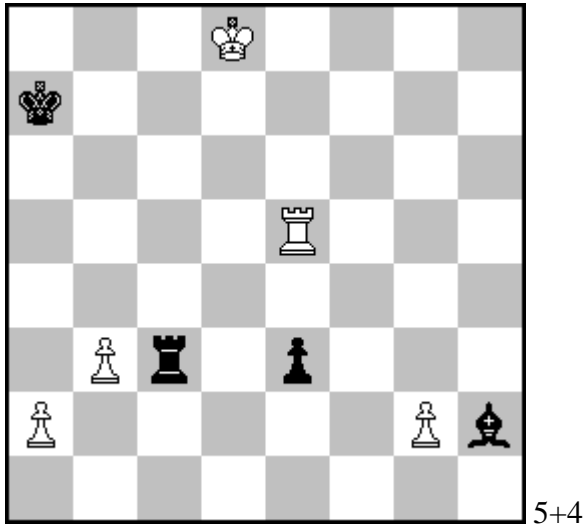
Entry H 3 for WCCI and FIDE-Album 2013-15 Retro Section

Klaus Wenda
Rasumofskygasse 28, 1030 Vienna Austria
kreuzschach@a1.net

Entries for WCCI and FIDE-Album 2013-15

Klaus Wenda

-14 & s#1 Proca AntiCirce



[abbreviation of pieces in German K,D,T,L,S,B]

Solution:

**1.Kc7-d8! Td3-c3+ 2.Kd6-c7 Tc3-d3+ 3.Tg5-e5 Lg1-h2+
4.f2:Lg3(g2) Lh4-g3+ 5.Kc7-d6 Td3-c3+ 6.Kd8-c7 Tc3-d3+
7.Te5-g5 [Return] Lg3-h4+ 8.Kc8-d8 Td3-c3+
[now a draw-pendulum follows]:
9.g5:f6ep(f2) f7-f5 10.Kd8-c8 Tc3-d3+ 11.Kc8-d8 Td3-c3+
12.Kd8-c8 Tc3-d3+ 13.Kc8-d8 Ka8-a7+ [forced]
14.b6:Da7(a2) & 1.b7+ D:b7(Dd8)#**

Try: 1.Kc8-d8? Td3-c3+ 2.f,h5:g6ep(g2) g7-g5 3.Kd8-c8 Tc3-d3+
4.Kc8-d8 Td3-c3+ 5.Kd8-c8 Tc3-d3+ 6.Kc8-d8 Ka8-a7+
[forced] 7.b6:Da7(a2) & 1.b7+ D:b7(Dd8)+ 2.K:d8(Ke1)!!

Theme: Uncapture of a black L in the fore-plan to guard the K-flight e1.
Logical problem.

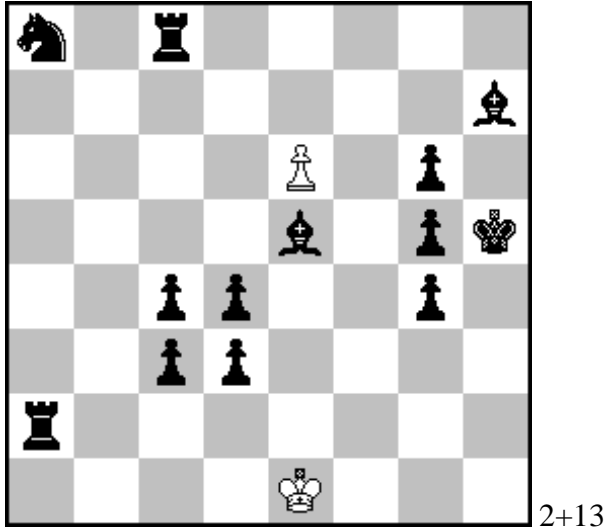
Quartz issue 38/2013 no. 819
(no award has appeared up to now)

Entry H 4 for WCCI and FIDE-Album 2013-15 Retro Section

Klaus Wenda Rasumofskygasse 28 1030 Vienna Austria
kreuzschach@a1.net

Klaus Wenda

-8 & #1 Proca AntiCirce



Mainplan:

1.Kf8:Qe8(Ke1)? Rd8-c8+ 2.Kg7-f8 & 1.Kh6+ Kh4!

Solution:

**1.Kg3:Bh4(Ke1)! Rf8-c8+ 2.Kf2-g3 Bh8-e5+ 3.Kf3-f2 Rf7-f8+
4.Ke2-f3 Re7-f7+5.Kd2-e2 Rd7-e7+ 6.Ke1-d2 Rf2-a2+ 7.Kf8:Qe8(Ke1)
Rd8-d7+ 8.Kg7-f8 & 1.Kh6#**

Logical problem

Julia's Fairies, Sept. 2015, no. 619.1

Entry H 5 for WCCI and FIDE-Album 2013-15 Retro Section

Klaus Wenda

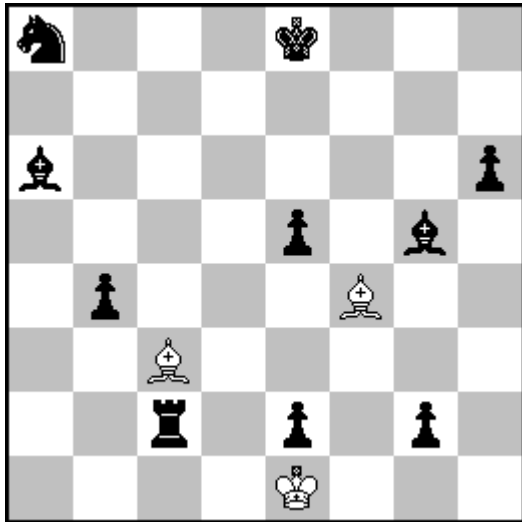
Rasumofskygasse 28; 1030 Vienna Austria

kreuzschach@a1.net

Entries for WCCI and FIDE-Album 2013-15

Klaus Wenda

-7 & #1 Proca AntiCirce Cheylan



[2 white bishops on black squares]

1.Kc7xPb6(Ke1)? Ka7xQ/R/B/Sb8+! 2.?

Solution:

1.Kd1xPd2(Ke1)! e3-e2+ 2.Ke1-d1 d3-d2+ 3.Kf1xPf2(Ke1) g3-g2+ 4.Ke1-f1 f3-f2+ 5.Kc7xPb6(Ke1)!

The reply 5...Ka7xSb8(Ke8)+ 6.Kc8-c7 & 1.Sc6# leads to a short variation that was prepared by... 3.Kf1xPf2(Ke1) g3-g2+

The uncaptures5...Ka7xQb8+/Bb8+(Ke8)? are illegal since one cannot release the position. Thus only one single b move is remaining:

5...Ka7xRb8(Ke8)+ 6.Bd2-c3! Ra2,Rb2-c2+/Bc4-a6+ 7.Re8-b8 & 1.Kb8#/Kb7#

6.Bb2-c3? Re2-c2+! 7.Re8-b8 & 1.Kb8+ Re1!

The aim of 6.Bd2-c3/Bb2-c3 (controlling the square c1) is to make the move Re8-b8 legal: ...7.Re8-b8 Kb8-a7+ 8.Kd8-c7+ e7-e5+ 9.Bc1-d2,b2+!

Strate Gems issue 64/2013, no. R0210, 2nd Hon. Men.

(Award issue 66/2014, Judge T. Brand)

Entry H 6 for WCCI and FIDE-Album 2013-15 Retro Section

Klaus Wenda Rasumofskygasse 28 1030 Vienna Austria
kreuzschach@a1.net