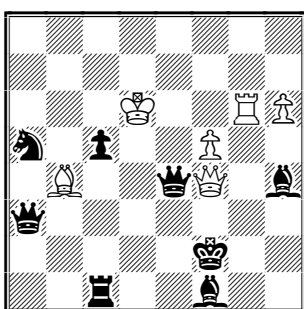


WCCI - 2013 – 2015 - Fairies

Ricardo de Mattos Vieira
Av. Princesa Isabel, 273 apt. 1001 – Copacabana
22011-010 – Rio de Janeiro – RJ
Brazil
ricmatvieira@hotmail.com

I Ricardo de Mattos Vieira
Brazil



1.LEOe3 LEOe8 2.LEOe6 Le7+
3.Ke5 Df3 4.Le1+ T:e1 #

1.LEOf3 LEOa8 2LEOc6 Sb7+
3.Kd5 De3 4.Tg2+ L:g2 #

hs # 4 2 sol.

wLEO f4
bLEO e4

Two anti-battery critical moves (by w/b LEO) in each solution on the same critical line.
Complete ODT. White reciprocal play.

Solution 1: 7 moves onto the thematic critical line (e1-e8) and 1 move to the thematic line of the second solution.

Solution 2: 7 moves onto the thematic critical line (h1-a8) and 1 move to the thematic line of the first solution.

9TH WCCT – Section G

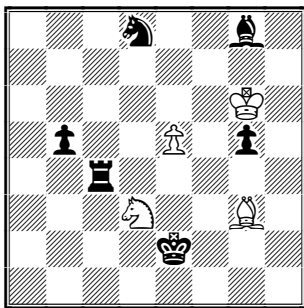
G69

27TH / 38TH PLACE

WCCI - 2013 – 2015 - Fairies

Ricardo de Mattos Vieira
Av. Princesa Isabel, 273 apt. 1001 – Copacabana
22011-010 – Rio de Janeiro – RJ
Brazil
ricmatvieira@hotmail.com

II Ricardo de Mattos Vieira
Brazil



H # 2 4.1.1.1.
FTF

- 1.Td4 Se3 2.Se6 Le1 #
- 1.Tg4 Le3 2.Le6 Se1 #
- 1.Se6 Se1+ 2.Kd4 Pd3 #
- 1.Le6 Le1+ 2.Kg4 Pg3 #

56TH WORLD CONGRESS OF CHESS COMPOSITION – 2013
13TH JAPANESE SAKE TOURNEY

Definition of Face-to-Face:

When a white piece is just one rank below a black piece on the same file, they exchange their roles. P on the first rank cannot move unless it is given a power to move by FTF. Any piece can make an en passant capture when it is given a power to move as P by FTF.

1ST PRIZE

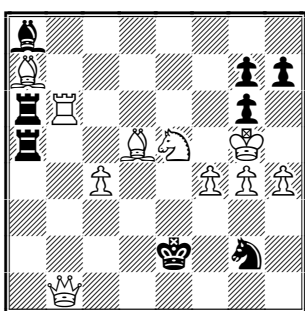
Judges: Tadashi Wakashima, Yuji Kikuta and Masato Yoshii

“The first pair of solutions makes a fine picture of mating positions, exchanging wL and wS. In the second pair, B2 and W2 become B1 and W1 (reversed). Very pleasant HOTF and an impeccable construction.”

WCCI - 2010 – 2012 - Fairies

Ricardo de Mattos Vieira
Av. Princesa Isabel, 273 apt. 1001 – Copacabana
22011-010 – Rio de Janeiro – RJ
Brazil
ricmatvieira@hotmail.com

IV Ricardo de Mattos Vieira
Brazil



1.... S:h4 2.Td6 Tc6
3.Lf3+ S:f3 #

1.... S:f4 2.Te6 Lc6
3.Sf3+ S:e6 #

HS # 2,5 2 sol.

The front piece of the L/T battery moves and becomes the rear piece of the direct / indirect new white batteries, which explores the white half-pin. Black Grimshaw and pin-mates.

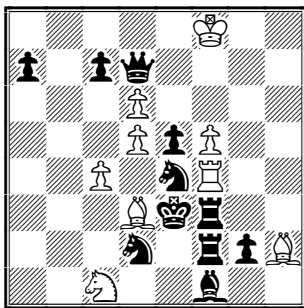
VLADIMIR ZABUNOV 85 MEMORIAL TOURNEY - 2013 (KOBULCHESS.COM)

2ND HONORABLE MENTION

WCCI - 2010 – 2012 - Fairies

Ricardo de Mattos Vieira
Av. Princesa Isabel, 273 apt. 1001 – Copacabana
22011-010 – Rio de Janeiro – RJ
Brazil
ricmatvieira@hotmail.com

V Ricardo de Mattos Vieira
Brazil



1.Sc3 Pf6-a3 2.Da4 Lc2 #

1.Sg5 Pf6-h6 2.Dh7 Tg4 #

H # 2 2 sol.
FTF

A very specific exploration of the Face-to-Face condition: creation of a white battery that can only be explored if masked by Black, ending in a FTF pin-mate.

56TH WORLD CONGRESS OF CHESS COMPOSITION – 2013
13TH JAPANESE SAKE TOURNEY

Definition of Face-to-Face:

When a white piece is just one rank below a black piece on the same file, they exchange their roles. P on the first rank cannot move unless it is given a power to move by FTF. Any piece can make an en passant capture when it is given a power to move as P by FTF.

COMMENDED