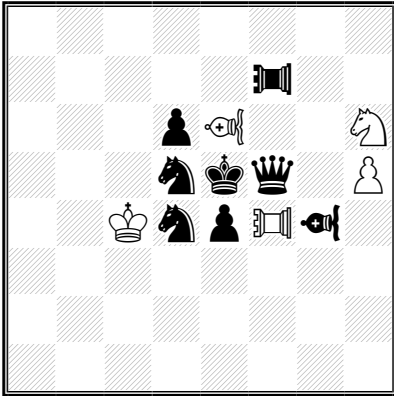


**1.  
Georgy EVSEEV  
Russia  
9th WCCT 2012-13  
2nd Place**



hs±3,5 (5+8) C+

2.1.1...

♙♜=Vao

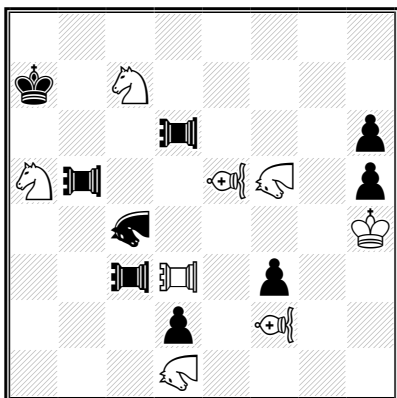
♖♞=Pao

1...VAe2 2.PAh4 Qf1 3.VAh3 Paf3 4.Sg4+ VAXg4‡

1...PAc7 2.VAg8 Qc8 3.PAf8 VAd7 4.Sf7+ PAXf7‡

Orthogonal-diagonal echo play, battery building, multiple use of the same critical square, Bristol, multiple line openings, switchback

**2.**  
**Georgy EVSEEV**  
**Russia**  
**Julia's Fairies 2013-III (v)**  
**3rd Honorable Mention**



hs#3 (8+9) C+

2.1.1...

♘♙=Nao

♚♛=Vao

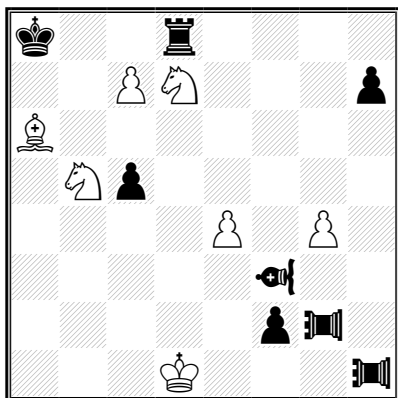
♖♗=Pao

1.NAb3 PAa6 2.PAd4+ NAb6 3.NAxh6 PAXh6‡

1.PAd5 NAa8 2.NAd4+ PAdb6 3.PAXd2 NAXd2‡

Critical moves, reciprocal antibattery building, incarceration, self-pinning, mate forced without check

**3.**  
**Georgy EVSEEV**  
**Russia**  
**Julia's Fairies 2013-III**  
**3rd Commendation**



hs#3 (7+8) C+

2.1.1...

Circe

♞=Vao

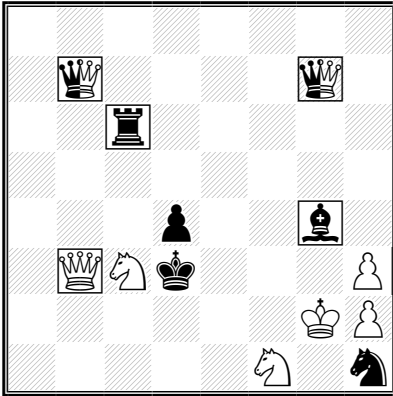
♜=Pao

1.cxd8=S(Rh8) Rxd8(Sg1)+ 2.Sh3 Rb8 3.Sb6+ Rxb6(Sg1)‡

1.c8=B Rxc8(Bf1)+ 2.Bd3 Rc6 3.Bb7+ Kxb7(Bf1)‡

Double rebirth on same square, obstruction of rebirthed piece,  
 promotion, specific Circe mate

**4.**  
**Georgy EVSEEV**  
**Russia**  
**1st Riga Black Balsam, Ostroda 2015**  
**2nd Honorable Mention**

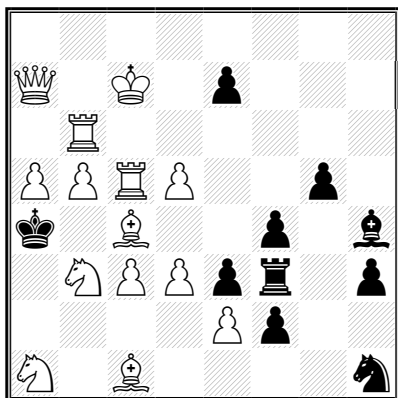


hs±2,5                    (6+5+2) C+  
 2.1.1...  
 □=Half-neutral piece

1... Qg8(B) 2. Q3b4(n) Bh5(n)+ 3. Bg6(W)+ Rxc6(n)±  
 1... Qa8(B) 2. Qa4(n) Rf6(n)+ 3. Rf3(W)+ Bxf3(n)±

Mate by half-neutral pieces in neutral phase, change of phase  
 of rear battery piece, tempo

**5.**  
**Georgy EVSEEV**  
**Russia**  
**Julia's Fairies 2015-II**

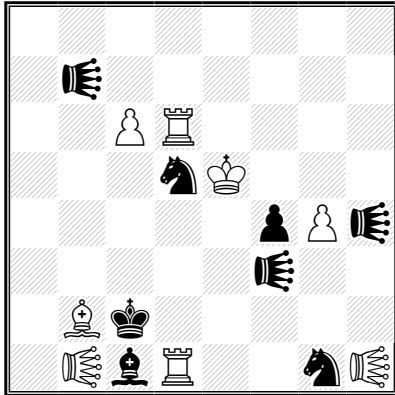


♯3 (14+10)  
Disparate

**1.d4! Z**  
1...Sg3 2.Bd3 [3.Rc4♯]  
1...Bg3 2.Rcc6 [3.Sc5♯]  
1...Rg3 2.Sd2 [3.Bb3♯]

Cyclic obstruction (incarceration) vs. cyclic square vacation,  
antidual effects

**6.**  
**Georgy Evseev**  
**Russia**  
**Julia's Fairies – 2014/II**  
**2nd Honorable mention**



hs≠3,5 (8+8)

b) ♖c1

♙♚=Lion

a)

1...Sc3 2.Rxg1 Bxb2 3.Rg3 LLe1 4.Rg2+ Se2‡

b)

1...Se2 2.R1xd5 Re1 3.Rb5 Llx2 4.Rc5+ Sc3‡

Zilahi, specific double check (battery+anibattery), “inverted” mating move, orthogonal-diagonal echo effects