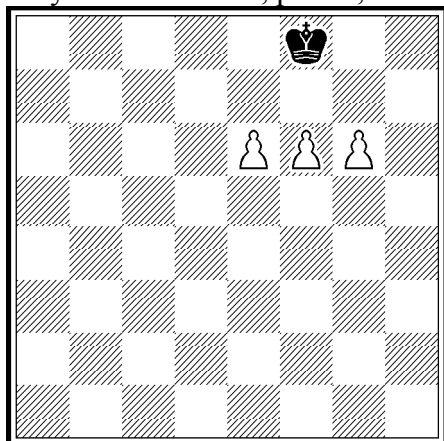


①

Arnold Beine

ASymmetrie 2013*, p. 489, G71



h#16 (3+1)
 MaxMax, KoKo, Circe rex incl.

C+ (by Alybadix)

1.Ke7 (1.Kg7?) 1...fxe7 [+bKe8] 2.Kf7 exf7+ [+bKe8] 3.Kd7 g7 4.Ke6 f8B 5.Kf7 (asymmetry, 5...e8B?) g8B 6.Kxg8 [+wBf1] Bg7 7.Kf7 Bf8 8.Ke6 e8B 9.Kd7 Bd6 10.Kc6 Bb5+ 11.Kd5 Bbd7 12.Kxd6 [+wBc1] Be6 13.Ke5 Bf4+ 14.Kf6 Bg6 (again asymmetry, 15.Kg7?) 15.Ke7 Be8 16.Kf8 Bd6#.

3 B-promotions, 3 consecutive asymmetry-moves, KoKo-Idealmate.

* Schlosser, Michael & Minski, Martin: ASymmetrie. Potsdam 2013

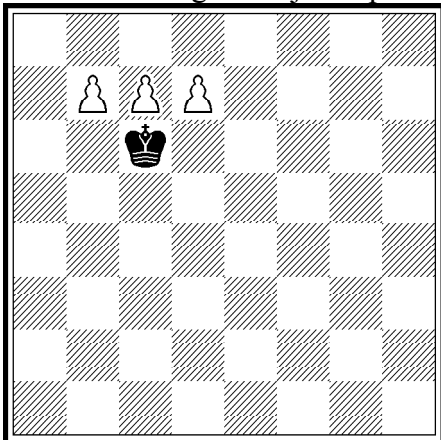
Arnold Beine
 Grund 15
 65366 Geisenheim
 Germany

arnold.beine@web.de

②

Arnold Beine

ASymmetrie 2013*, p. 590, M39
3rd Place Wenigsteinerjahrespreis



h#16,5 (3+1)

MaxMax, KoKo, Circe rex incl.

b) a1<->h1

C+ (by Alybadix)

a) 1...d8B (1...b8B?) 2.Kd7 Be7 3.Ke6 Bf6 4.Kd7 Bd8 5.Kc6 (position after the key, but white to move) 5...b8R (5...b8B? etc. like in b) fails in the end: ... 17.Ke8 Qf7#??) 6.Kb7 c8Q 7.Ka8 Bc7 8.Kb7 Qxb7 [+bKe8] 9.Kd7 Re8 10.Kxc7 [+wBc1] Qb1 11.Kd8 Qc2 12.Ke7 Bb2 13.Kd8 Qc8+ 14.Kc7 Qb7 15.Kd8 Qb3 16.Ke7 Bf6+ 17.Kf8 Qg8#,

b) 1...e8B (1...g8B?) 2.Ke7 Bd7 3.Kd6 Bc6 4.Ke7 Be8 5.Kf6 (the same tempo manoeuvre as in a), but now asymmetry starts, because the rebirth square of bK is not mirrored) 5...g8B (asymmetry, 5...g8R? 6.Kg7??) 6.Kg7 (6.Ke7?) 6...Bh7 7.Kf8 Bg6 8.Ke7 Bd7 9.Kf6 Bf5 10.Kg5 Bh5 11.Kf6 Bg6 12.Ke7 f8Q 13.Kf6 Be8 14.Kg7 Bf7+ 15.Kf6 Qg7+ 16.Ke7 Be6+ 17.Kd8 Qc7#.

* Schlosser, Michael & Minski, Martin: ASymmetrie. Potsdam 2013

Arnold Beine

Grund 15

65366 Geisenheim

Germany

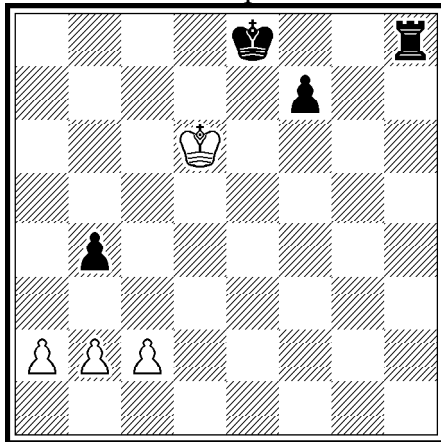
arnold.beine@web.de

③

Arnold Beine

1st Honourable Mention

4th FIDE World Cup 2015



reci-h#24

(4+4)

MaxMax, KoKo

C+ (by Alybadix)

1.0-0 c4 2.bxc3 e.p. b4 3.Re8 a4 4.Re5 b5 5.Re8
Kc5 6.Re6 Kd6 7.Rg6 Ke7 8.Ra6 b6 9.Kg7 a5
10.Ra7+ b7 11.Ra8 b8S 12.Ra6 Sxa6 13.Kg8 Sb4
14.f6 Sd3 15.c2 Sb2 16.c1S Sd1 17.Se2 Sf2 18.Sg3
Sh3 19.Sf5+ Kf8 20.Sg3 Sg5 21.Sh5 Se6 22.f5 Sg5
23.Sf4 Se4 (24.Sg6#) 24.Sd3 Sf6#.

Black Valladão, white excelsior, black and white
KoKo-echo-modelmates.

Arnold Beine

Grund 15

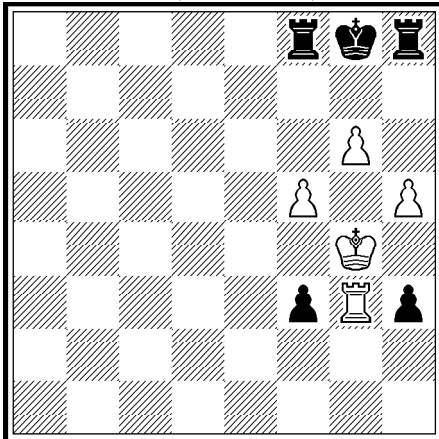
65366 Geisenheim

Germany

arnold.beine@web.de

④

Arnold Beine
harmonie 126, VII/2015, No. 2255



hs#12,5 (5+5)
MaxMax, KoKo,
Couscouscirce rex incl.

C+ (by Alybadix and Popeye)

1...R_xh5 [+wPa8=B] 2.B_xf3 [+bPf1=R] Rh8 3.Rg1 Rh4 4.Bh1 R1_xf5 [+wPa8=S]+ 5.K_xh3 [+bPe1=Q] Qe8 6.Bb7 Qxa8 [+wSd8] 7.Bh1 Q_xh1[-]+ 8.Sf7 Qe4 9.Rg5 Rh8 10.Rg2 R_xh3 [+wKa8] 11.Rg5 Rh8 12.S_xh8 [+bRg1] Qh1 13.R_xg1 [+bRa1] Qb7#. After 1...R_xf5 [+wPa8=B]? 2.B_xf3 [+bPf1=R] Rf8 3.Rg1 Black must play 3...R8_xf3 [+wBa8]!. Q-promotion in the first move would lead to 2.Q_xf3 [+bPd1=??] and Q-promotion in the second move would lead to 4...Q_xf5 [+wPd8=??].

First realisation of an AUW in an orthogonal-symmetric position with asymmetric solution.

Arnold Beine
Grund 15
65366 Geisenheim
Germany

arnold.beine@web.de