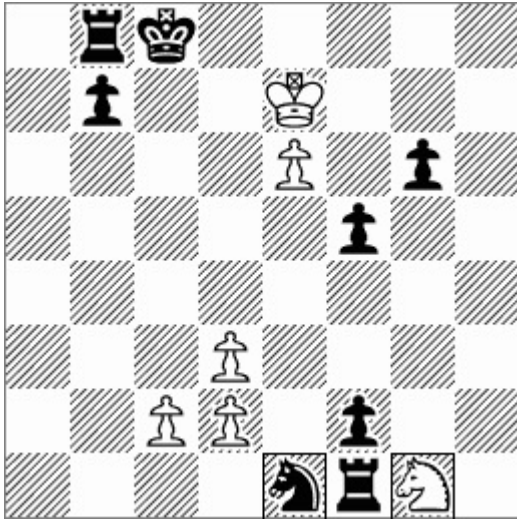


No. 1

Ingemar Lind ([ingemar.lind@bjarred.net](mailto:ingemar.lind@bjarred.net))

5<sup>th</sup> HM, Springaren Summer Tourney, 2013



H#2

Chameleons e1, g1

a) (diagram)

1.cSe1\*d3=cB cSg1-e2=cB 2.cBd3-c4=cR cBe2\*c4=cR #

b) Chameleon Bishops e1, g1

1.cBe1\*d2=cR cBg1\*f2=cR 2.cRd2\*c2=cQ cRf2\*c2=cQ #

c) Chameleon Rooks e1, g1

1.cRe1-e5=cQ cRg1-g3=cQ 2.cQe5-c7=cS cQg3-d6=cS #

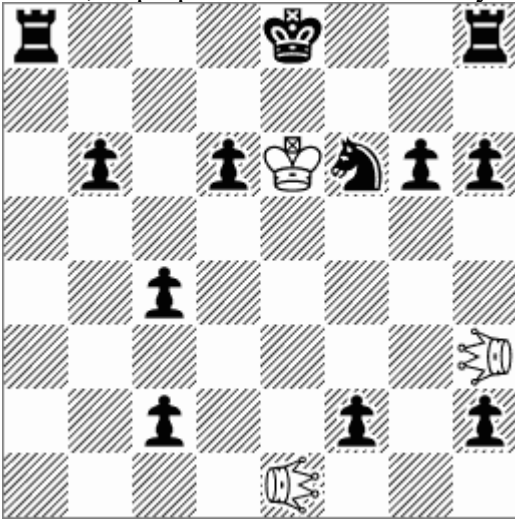
d) Chameleon Queens e1, g1

1.cQe1\*e6=cS cQg1-g5=cS 2.cSe6-c7=cB cSg5-e6=cB #

No. 2

Ingemar Lind ([ingemar.lind@bjarred.net](mailto:ingemar.lind@bjarred.net))

4<sup>th</sup> HM, Superproblem TT 113 - "Fairy Black Castlings", 2014



H#2

Leo h3, AndernachGrasshopper e1

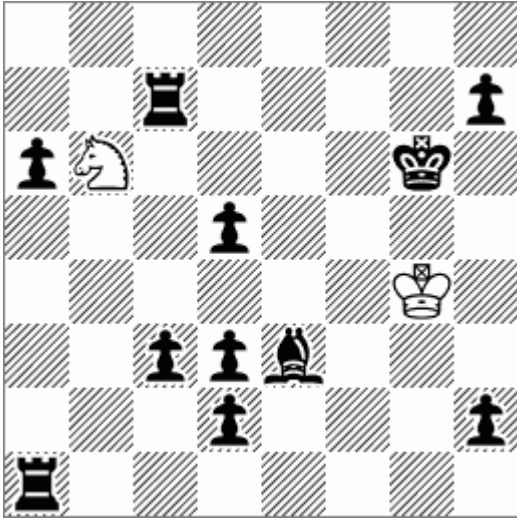
1.c2-c1=LE LEh3-g3                      2.0-0-0 AGe1-b1 # (wLEc1)

1.f2-f1=AG AGe1-g1 (wAGf1)    2.0-0    AGf1-f7 # (wSf6)

No. 3

Ingemar Lind ([ingemar.lind@bjarred.net](mailto:ingemar.lind@bjarred.net))

5<sup>th</sup> HM, Springaren Winter Tourney, 2014



#7 Take&Make, Anti-Take&Make, Black Maximummer

1.Sb6-a8 Ra1-h1 2.Sa8\*c7-c4[+bRg7] Rh1-a1 3. Sc4\*e3-f2[+bBh6] Ra1-h1

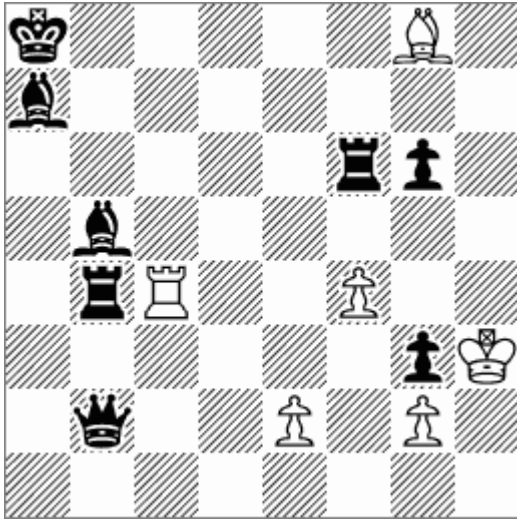
4.Sf2\*h1-a1[+bRe1] Re1-e8 5.Sa1-c2 Re8-e1 6.Sc2\*e1-e6[+bRf1] Rf1-f8 7.Se6\*f8-h8[+bRf6] #

White minimal. White Knight visits all 4 corners.

No. 4

Ingemar Lind ([ingemar.lind@bjarred.net](mailto:ingemar.lind@bjarred.net))

1<sup>st</sup> HM, Superproblem TT 142- "Exchanging roles of black battery pieces", 2015



HS#3 Take&Make

a) (diagram)

1.Rc4-c2 Rf6\*f4-f5 2.Rc2\*b2-h8 Bb5-d7 3.Bg8-d5 + Rf5\*d5-g8 #

b) Kh3->f3

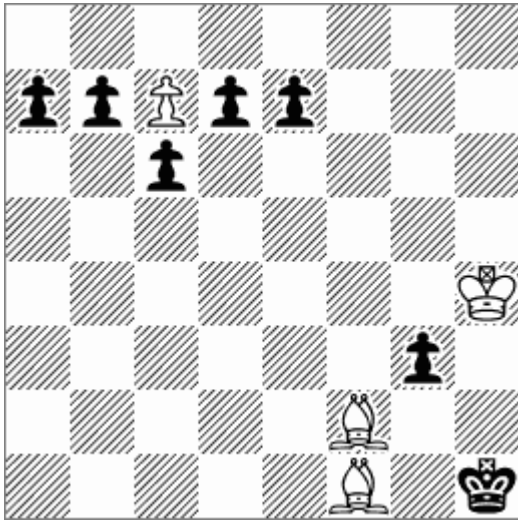
1.Rc4-c6 Bb5\*e2-e3 2.Bg8-d5 Be3\*f4-f5 3.Rc6-c8 + Bf5\*c8-c6 #

Exchanging role of battery pieces by both White and Black.

No. 5

Ingemar Lind ([ingemar.lind@bjarred.net](mailto:ingemar.lind@bjarred.net))

1<sup>st</sup> Prize, Springaren Summer Tourney, 2015



Ser-H#40 AlphabeticChess

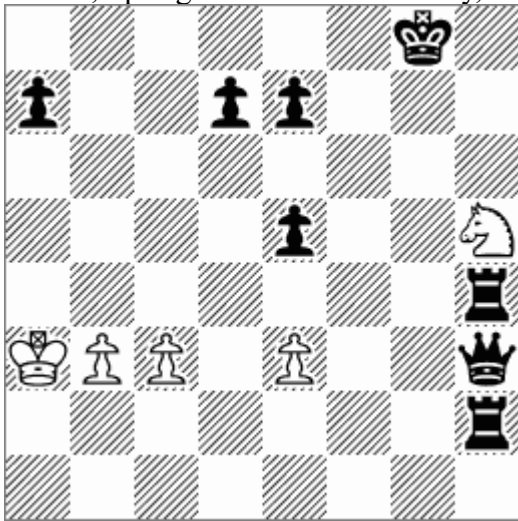
1.a7-a5 2.a5-a4 3.a4-a3 4.a3-a2 5.a2-a1=B 6.Ba1-h8 7.b7-b5 8.b5-b4 9.b4-b3 10.b3-b2  
11.b2-b1=B 12.Bb1-h7 13.c6-c5 14.c5-c4 15.c4-c3 16.c3-c2 17.c2-c1=B 18.Bc1-h6  
19.d7-d5 20.d5-d4 21.d4-d3 22.d3-d2 23.d2-d1=B 24.Bd1-h5 25.e7-e5 26.e5-e4 27.e4-e3  
28.e3-e2 29.e2\*f1=S 30.Sf1-h2 31.g3-g2 32.g2-g1=S 33.Sg1-h3 34.Kh1-g2 35.Kg2-f3  
36.Kf3-e4 37.Ke4-d5 38.Kd5-c6 39.Kc6-b7 40.Kb7-a8 c7-c8=Q #

4x Black Excelsior, 6 Black minor promotions, King walks to opposite corner. Model mate.

No. 6

Ingemar Lind ([ingemar.lind@bjarred.net](mailto:ingemar.lind@bjarred.net))

2<sup>nd</sup> HM, Springaren Summer Tourney, 2015



Ser-H#28 AlphabeticChess

1.a7-a5 2.a5-a4 3.a4\*b3 4.b3-b2 5.b2-b1=B 6.Bb1-a2 7.Ba2-f7 8.d7-d5 9.d5-d4 10.d4-d3  
11.d3-d2 12.d2-d1=S 13.Sd1\*e3 14.Se3-f5 15.e5-e4 16.e4-e3 17.e3-e2 18.e2-e1=Q 19.Qe1-e5  
20.Qe5-h8 21.e7-e5 22.e5-e4 23.e4-e3 24.e3-e2 25.e2-e1=R 26.Re1-e8 27.Re8-f8  
28.Sf5-g7 Sh5-f6 #

Black AUW, 3x Black Excelsior. Model mate.