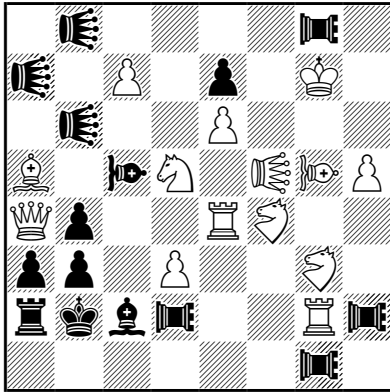







Ján DUČÁK

15974 Die Schwalbe 267/2014



#2 2.1.1.1 (15 + 14)

AntiCirce Calvet

Fairy pieces: Lion , Rook eagle Bishop moose , Rose-hopper 

1.Re4\*b4[wRb4->a1](A) ? threat 2.c7\*b8=Q[wQb8->d1](B) #  
 1...Llb8-b4(a) 2.Qa4\*b4[wQb4->d1](C) #  
 1...Ra2\*a1[bRa1->h8](b) 2.c7\*b8=R[wRb8->a1](D) #  
 1...Bc2-d1(c) 2.c7\*b8=RP[wRPb8->b8](E) #  
 1...REd2-c3(d) 2.c7\*b8=B[wBb8->c1](F) #  
 1...REd2-c1 !

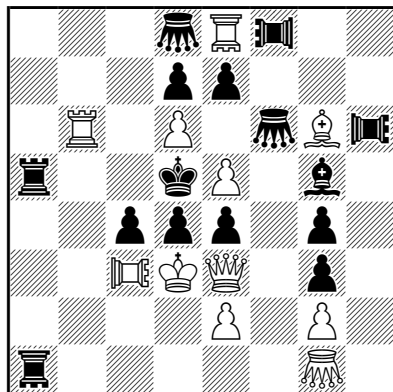
1.Qa4\*b4[wQb4->d1](C) ! threat 2.c7\*b8=R[wRb8->a1](D) #  
 1...Llb8-b4 (a) 2.Re4\*b4[wRb4->a1](A) #  
 1...Ra2-a1(b) 2.c7\*b8=B[wBb8->c1](F) #  
 1...Bc2\*d1[bBd1->c8](c) 2.c7\*b8=Q[wQb8->d1](B) #  
 1...REd2-c3(d) 2.c7\*b8B[wBb8->c1](F) #  
 1...REg1-f2 2.c7\*b8=RP[wRPb8->b8](E) #

1.c7\*b8=Q[wQb8->d1](D) ? threat 2.Re4\*b4[wRb4->a1](A) #  
 1...Ra2-a1(b) 2.Ba5\*b4[wBb4->c1](G) #  
 1...Bc2\*d1[bBd1->c8](c) 2.Qa4\*b4[wQb4->d1](C) #  
 1...REd2-c3(d) 2.RPf4\*b4[wRPb4->b8](H) #  
 1...REd2-c1 !

1.c7\*b8=R[wRb8->a1] ! threat 2.Ba5\*b4[wBb4->c1] #, 2.Qa4\*b4[wQb4->d1] #  
 1...Ra2\*a1[bRa1->h8](b) 2.Re4\*b4[wRb4->a1](A) #  
 1...Bc2-d1(c) 2.RPf4\*b4[wRPb4->b8](H) #  
 1...REd2-c3(d) 2.Ba5\*b4[wBb4->c1](G) #  
 1...REg1-f2 + 2.Sd5\*b4[wSb4->g1] #



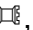

## Ján DUČÁK

F 3184 The Problemist I/2015



#2 (11 + 15)

AntiCirce Cheylan

Fairy pieces: Grashopper-2 , Rook hopper , Rook eagle Rook-lion h6 , 

B: Mirror a1-h1

1.Bg6\*e4[wBe4-&gt;f1](A) ? threat 2.Kd3-e4(B) #

1...G2f6\*b6[bG2b6-&gt;b1](a) 2.Qe3-e4(C) #

1...RLh6\*d6[bRLd6-&gt;d1](b) 2.Rb6-d6 #

1...RLh6-e6(b') !

1.Kd3\*e4[wKe4-&gt;e1](B) ? threat 2.Qe3-e4(C) #

1...G2f6\*b6[bG2b6-&gt;b1](a) 2.Bg6-e4(A) #

1...d4\*c3[bPc3-&gt;c7](c) 2.Qe3-d4(C') #

1...RHa1-f1 !

**1.Qe3\*e4[wQe4->d1](C) ! threat 2.Bg6-e4(A) #**

1...G2f6\*b6[bG2b6-&gt;b1](a) 2.Kd3-e4(B) #

1...d4\*c3[bPc3-&gt;c7](c) 2.Kd3-e3 #

B) mirror a1&lt;--&gt;h1

1.Bb6\*d4[wBd4-&gt;c1](A') ? threat 2.Qd3-d4(C') #

1...G2c6\*g6[bG2g6-&gt;g1](a') 2.Ke3-d4(B') #

1...RLa6\*e6[bRLe6-&gt;e1](b') 2.Rg6-e6 #

1...e4\*f3[bPf3-&gt;f7](c') 2.Qd3-e4(C) #

1...RLa6-d6 !

1.Qd3\*d4[wQd4-&gt;d1](C') ? threat 2.Ke3-d4(B') #

1...G2c6\*g6[bG2g6-&gt;g1](a') 2.Bb6-d4(A') #

1...e4\*f3[bPf3-&gt;f7](c') 2.Ke3-e4(B') #

1...RHh1-c1 !

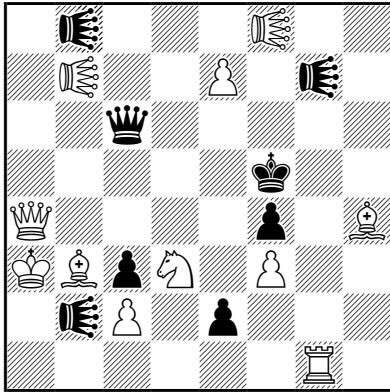
**1.Ke3\*d4[wKd4->e1](B') ! threat 2.Bb6-d4(A') #**

1...G2c6\*g6[bG2g6-&gt;g1](a') 2.Qd3-d4(C') #

It's a 3x3 Djurašević cycle, doubled with the cycle thrown into reverse in B).

Ján DUČÁK

6290 Die Schwalbe 272/2015



s#2 (11 + 8)

Madradi

Fairy pieces: Lion ♁, ♁

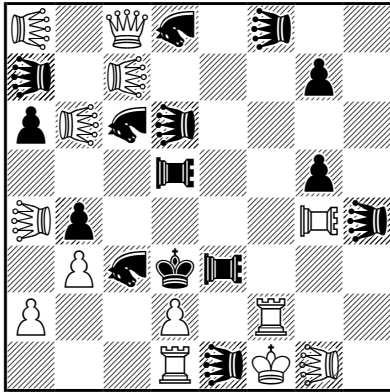
1.e7-e8=R(A) ? threat 2.Sd3-e1 Llg7-a7 #, 1...e2-e1=S(a) !  
 1.e7-e8=S(B) ? threat 2.Bh4-e1 Llg7-a7 #, 1...e2-e1=B(b) !  
 1.e7-e8=B(C) ? threat 2.Rg1-e1 Llg7-a7 #, 1...e2-e1=R(c) !

**1.Lf8-b4 !** zugzwang




1...e2-e1=Q 2.e7-e8=Q Llg7-a7 #  
 1...e2-e1=R(a) 2.e7-e8=B(A) Llg7-a7 #  
 1...e2-e1=S(b) 2.e7-e8=R(B) Llg7-a7 #  
 1...e2-e1=B(c) 2.e7-e8=S(C) Llg7-a7 #

Ján DUČÁK

285 PAT A MAT 85/2013



#2 (13 + 15)

Fairy pieces: Lion Mao Rook-lion , Kangaroo lion , 

B: wBb6

1.Lih7?(A)? (2.RLg6(B))# 1...RLd7(a)!

**1.RLg6(B)!** (2.Lih7(A))

1..RLd7(a),MAd4(b),Kc2(c),Ke4(d)

2. d\*c3(C),d\*e3(D),d4(E),d3(F)#

b) 1.RLg6(B)? (2.Lih7(A))# 1...MAd4(b)!

**1. Lih7(A)!** (2.RLg6(B))#

1...RLd7(a),MAd4(b),Kc2(c),Ke4(d)

2. d\*e3(D),d\*c3(C),d3(F),d4(E)#

ale Popeye v4.73 najde:

A)

1.RLg4-g6 ? threat 2.LIc7-h7 #

1...RLd5-d7 2.d2\*c3 #

1...MAc6-d4 refutes

1...Kd3-c2 refutes

1...Kd3-e4 2.d2-d3 #

(1...RLd5-h5 2.d2\*c3 #)

(1...MAd8-f7 + 2.Qc8-f5 #)

(1...KLf8\*a8 refutes)

(1...KLe1-h1 refutes)

(1...MAc3-b1 refutes)

(1...MAc3\*d1 refutes)

(1...MAc3-b5 refutes)

(1...KLh4\*a4 refutes)

(1...a6-a5 refutes)

(1...KLd6\*d2 refutes)

(1...KLa7-h7 refutes)

(1...KLa7\*a2 refutes)

(1...KLa7-a3 refutes)

(1...KLa7\*f2 refutes)

(1...g7-g6 refutes)

(1...MAd8-e6 refutes)

(1...KLf8\*a8 refutes)

B) wBb6

1.LIc7-h7 ? zugzwang

1...RLd5-d7 2.d2\*c3 #

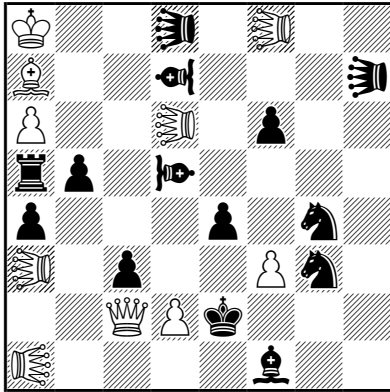
1...MAc6-d4 refutes

1...Kd3-c2 refutes

1...Kd3-e4 2.d2-d4 #, 2.d2-d3 #



Ján DUČÁK

F 3091 The Problemist XI/2013



#2 (10 + 14)

ImmunChess

Fairy pieces: Kangaroo lion , Alfil Bishop moose Rose-lion 

1.f3-f4 ? threat 2.d2\*c3(A) #

1...ALd7-f5(x) 2.d2-d3(B) #

1...Sg4-e3(y) 2.d2\*e3(C) #

1...BMd5-e3(z) + 2.d2-d4(D) #

1...BMd5\*f4 !

1.KLd6-d1 ! threat 2.d2-d3(B) #

1...ALd7-f5(x) 2.d2\*c3(A) #

1...Sg4-e3(y) 2.d2-d4(D) #

1...BMd5-e3(z) + 2.d2\*e3(C) #

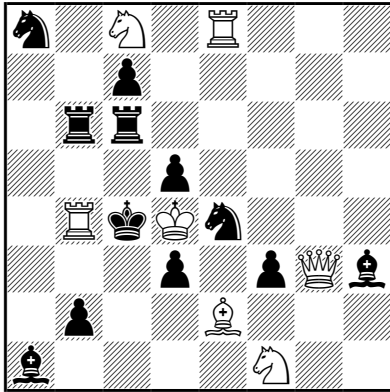
1...Ke2\*f3 2.Qc2\*e4 #

1...e4-e3 2.d2-d4 #

1...BMd5-f4 2.d2\*c3 #

Ján DUČÁK

15473 Die Schwalbe 259/2013



s#2 (7 + 12)  
Madrasi RexInclusiv

1.Re8\*e4(A) ? threat 2.Sf1-d2(B) + b2-b1=S #  
1...Bh3\*f1 !

1.Re8-e6 ? threat 2.Sc8\*b6(C) + b2-b1=R #  
1...Se4-d6 2.Sf1-d2(B) + b2-b1=S #  
1...Se4-c3 !

**1.Sf1-d2(B) !** threat 2.Re8\*e4(A) + b2-b1=S #  
1...Rc6-e6 2.Sc8\*b6(C) + b2-b1=R #  
1...f3-f2 2.Qg3\*d3 + b2-b1=Q #  
1...Bh3-e6 2.Be2\*d3 + b2-b1=B #