

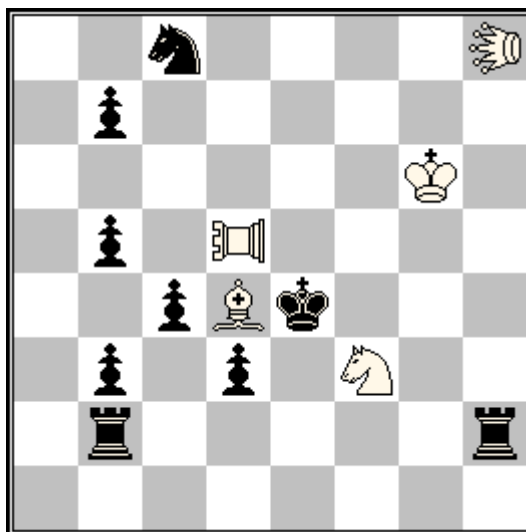
WCCI 2013-2015

Entry #1

Section G, Fairies

FB1237, StrateGems 61 Jan.2013

Themis Argirakopoulos, Greece
themis.argirakopoulos@gmail.com



h#2

b) ♖f3→e7
c) ♖f3→h4

(5+9)

C+

Take & Make

♖=Lion (LI)

♖♖=Rook-Lion (TL)

Solutions :

a) 1.Kxf3(Ke1) Llh1 2.The2 Lg1#

b) 1.Kxd5(Ka5) Lla8 2.b4 Sxc8(Sa7)#

c) 1.Kxd4(Kg1) Lla1 2.Tbf2 TLd1#

Cyclic Zilahi, Anti-Battery, Four corners

Comments :

a) b) c)

Piece captured by bK : S - TL - B

Anti-Battery builder : B - S - TL

White guarding piece : TL - B - S

Take & Make :

When a piece (including King) captures (**except a King**), it must move again without capturing from its arrival square as the piece it captured (color included). A Pawn capturing promotes, eventually, only after its 2nd move. **A Pawn can't appear on its 1st rank.**

♔
K

♑
D

♖
T

♗
L

♘
S

♙
P

♖
LI

♖♖
TL

WCCI 2013-2015

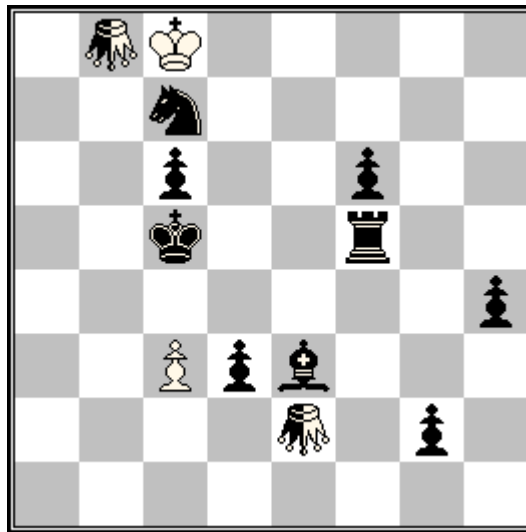
Entry #2

Section G, Fairies

Venelin Alaikov 80 MT Feb.2013

4th Prize

Themis Argirakopoulos, Greece
themis.argirakopoulos@gmail.com



h#2

b) ♔c5→d5

(2+9+2)

C+

♟=Neutral HurdleColourChanging Grasshopper
(Andernach Grasshopper)

a) 1.nhccGe2-h2[g2=w] nhccGh2-h5[h4=w] 2.nhccGh5-e5[f5=w] nhccGe5-e2[e3=w] #

Solutions :

b) 1.nhccGb8-d8 nhccGd8-g5[f6=w] 2.nhccGg5-e5[f5=w] nhccGe5-b8[c7=w] #

Comments :

Rundlaufs by neutral piece, Double Andernach mates



K



D



T



L



S



P



nhccG

WCCI 2013-2015

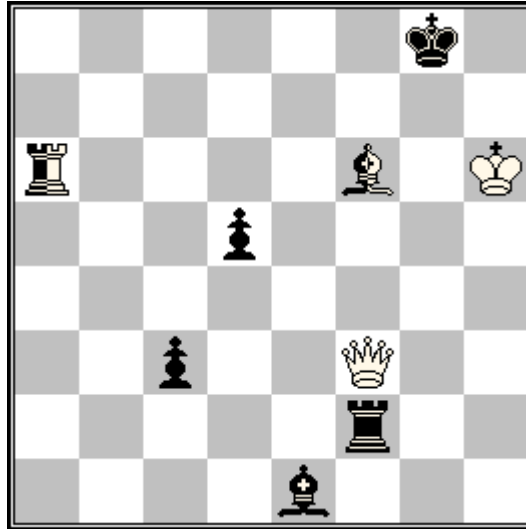
Entry #3

Section G, Fairies

12th Tzuica TY, Fairy Section, 57th WCCC Bern, Aug.2014

2nd Prize

Themis Argirakopoulos, Greece
themis.argirakopoulos@gmail.com



hs#2.5

b) f6=Neutral Fairy Bishop

(2+5+2)
C+

Kamikaze Circle

Solutions : a)
1...Th2+ 2.Dh5 Lh4 3.De8+ Lxf6(Lf8;Lnc1)#

b)
1...Ld2+ 2.De3 Tf4 3.De8+ Txf6(Th8;Lnf8)#

Comments : Quadruple check, Diagonal-Orthogonal correspondence,
Reciprocal Batteries

Kamikaze Circle :

When a capture occurs, the capturing piece and the captured piece in this order (King excluded, unless otherwise stated) must be replaced on their rebirth square (according to the "[modalitis Circa](#)") if it is empty : otherwise, the piece vanishes.


K


D


T


L


S


P

WCCI 2013-2015

Entry #4

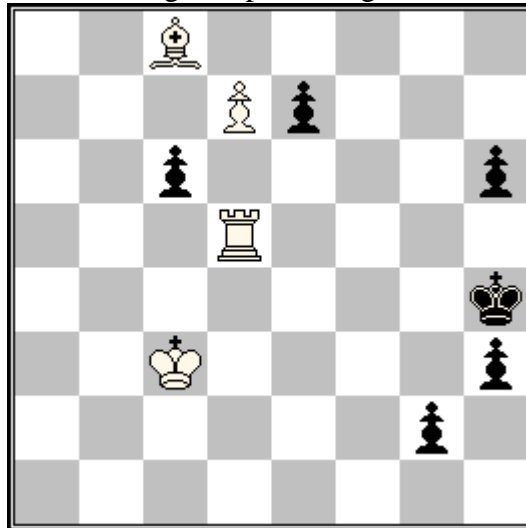
Section G, Fairies

Marianka 2015 Fairies Aug.2015

4th Place

Themis Argirakopoulos, Greece

themis.argirakopoulos@gmail.com



hs+2.5

- b) ♔c3→d4
- c) ♔c3→e1
- d) ♔c3→h2

(4+6)

C+

Messigny Chess

Solutions :

- a) 1...g1=D 2.d8=D Dd8↔Dg1 3.De1+ De1↔Dd8+
- b) 1...g1=T 2.d8=T Td8↔Tg1 3.Tg4+ Tg4↔Td8+
- c) 1...g1=L 2.d8=L Ld8↔Lg1 3.Lf2+ Lf2↔Ld8+
- d) 1...g1=S 2.d8=S Sd8↔Sg1 3.Sf3+ Sf3↔Sd8+

Comments :

Babson Task

Messigny :

A piece (King included) can also swap places with an opposite piece of the same nature. Neither of the two pieces must have swap its place the previous move.

♔
K

♑
D

♖
T

♗
L

♘
S

♙
P

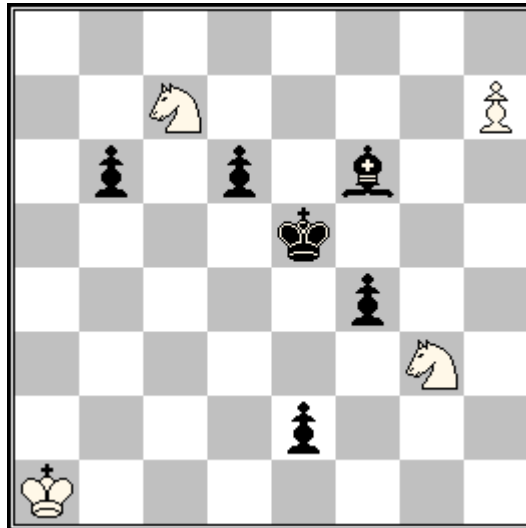
WCCI 2013-2015

Entry #5

Section G, Fairies

FA1486, StrateGems 72 Oct.2015

Themis Argirakopoulos, Greece
themis.argirakopoulos@gmail.com



h#2

- b) ♔a1→d2
- c) ♔a1→b4
- d) ♔a1→a2

(4+6)

C+

Messigny Chess

Solutions :

- a)
1.e1=L h8=L 2.Lc3+ Lc3↔Lh8#
 - b)
1.e1=S h8=S 2.Sf3+ Sf3↔Sh8#
 - c)
1.e1=T h8=T 2.Te4+ Te4↔Th8#
 - d)
1.e1=D h8=D 2.Da1+ Da1↔Dh8#
- Babson Task

Comments :

Messigny :

A piece (King included) can also swap places with an opposite piece of the same nature. Neither of the two pieces must have swap its place the previous move.



K



D



T



L



S



P

WCCI 2013-2015

Entry #6

Section G, Fairies

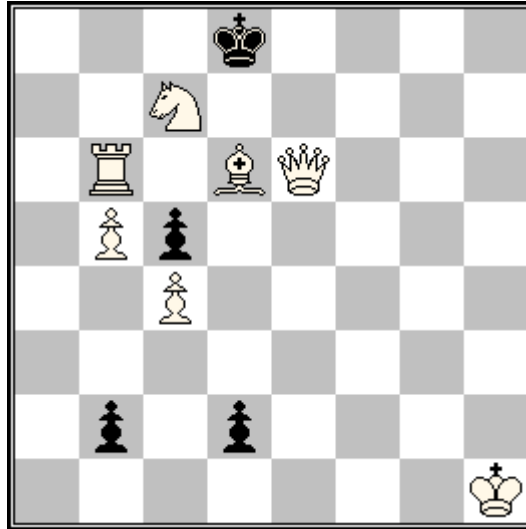
2nd KoBulChess TT, Christmas 2014

5th Prize

Themis Argirakopoulos, Greece

themis.argirakopoulos@gmail.com

Dedicated to Sebastien Luce



ser-h=6

2.1.1...

(7+4)

C+

Circle Snek

Solutions :

1.d1=L 2.b1=T 3.Tb2 4.Tg2 5.Lf3 6.Lc6 Kxg2(Tc6)=
1.d1=S 2.b1=D 3.Da2 4.Se3 5.Sg2 6.Da8 Kxg2(Sa8)=

Comments :

AUW

Circle Snek :

When a Queen is captured, a Rook of the same side becomes a Queen.

When a Rook is captured, a Bishop of the same side becomes a Rook.

When a Bishop is captured, a Knight of the same side becomes a Bishop.

When a Knight is captured, a Queen of the same side becomes a Knight.



K



D



T



L



S



P