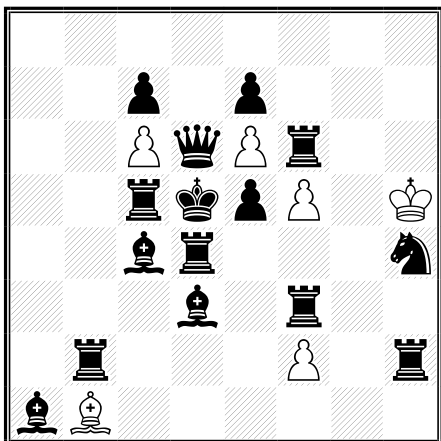


1) Arno Tüngler  
Am Steinfels  
D-65618 Selters  
Germany [atungler@yahoo.com](mailto:atungler@yahoo.com)

C0492 *Strate Gems* 01-03/2013  
2<sup>nd</sup> Prize



ser-#154 C+ (6+15)

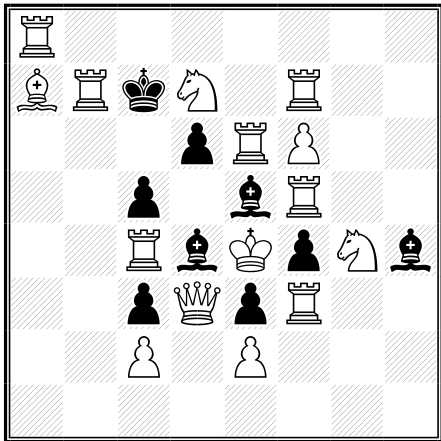
1.Bc2! 8.Bg6 10.Kg7 11.Bf7 13.Ke8 24.Bd7 26.Kc8 35.Bb5 40.Ka3 42.Bb3 44.Kc3 45.Bc2 47.Ke1  
49.Be2 52.Kxh2 55.Ke1 57.Bc2 59.Kc3 60.Bb3 62.Ka3 64.Bb5 69.Kc8 78.Bd7 80.Ke8 91.Bf7 93.Kg7  
94.Bg6 96.Kg5 98.Bg4 99.Kxh4 100.Kg5 102.Bg6 104.Kg7 105.Bf7 107.Ke8 118.Bd7 120.Kc8 129.Bb5  
134.Ka3 136.Bb3 138.Kc3 139.Bc2 141.Ke1 142.Bxd3! 145.Kxf3 146.Ke3 148.fxe5 149.exf6 151.f8B!  
153.Bxd4 154.Be4#

New length record for seriesmate with promoted force. Bishop promotion and a nice mate position. White needs to carefully chose the right time for capturing the bB on d3.

*These kinds of records with promoted force have a long history. The first to try a length record was Karl Fabel in 1955 with 128 moves. See in PDB No. P1260310. (By the way M. & R. Tomasevic achieved the same number of moves in 1988 without promoted force - P1215853.) In 1958 C.E. Kemp improved to an impressive 138 moves (P1229854) which was extended to 140 moves by V. Janal in 2005. On January 4, 2013 A. Tüngler published a 148-mover on chessproblems.ca (P1258415) and now the record stands at 154 moves.*

2) Arno Tüngler  
Am Steinfels  
D-65618 Selters  
Germany [atungler@yahoo.com](mailto:atungler@yahoo.com)

10788 *feenschach* 07/2013



Ser-h=161 C+

(15+9)

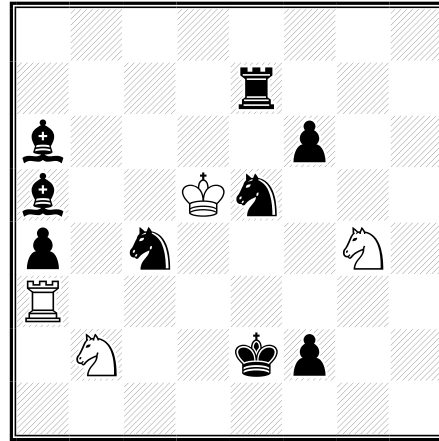
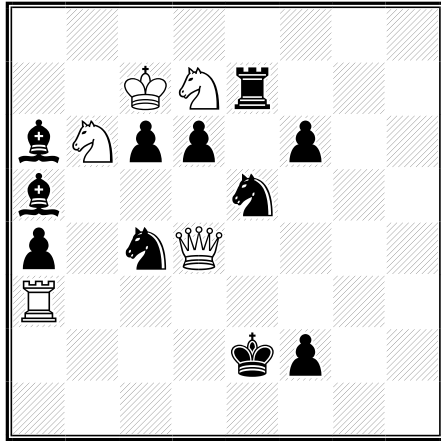
Short solution: 1.Kc6 7.Bb6 9.Ka6 11.Bb4 16.Kc1 25.Bd2 27.Ke1 38.Bf2 40.Kg2 41.Bg3  
43.Kh4 54.Bg5 57.Kxf7 60.Kh4 71.Bg3 73.Kg2 74.Bf2 76.Ke1 87.Bd2 89.Kc1 98.Bb4  
103.Ka6 105.Bb6 107.Kc6 108.Bc7 109.Kxd7 110.Kc6 111.Bb6 113.Ka6 115.Bb4 120.Kc1  
129.Bd2 131.Ke1 142.Bf2 144.Kg2 145.Bg3 147.Kh4 158.Bg5 160.Kg6 161.Bxf6 Kd5=

New length record for series-help-stalemates with legal position and promoted force. Black must capture the wSd7 so that f7 is protected in the stalemate-position. The wPf6 can be captured only at the very end and so the two promoted bishops in the center remain immovable.

The former record was a simple extension of Ott's famous 153-mover by adding one promoted unit. (See <http://www.yacpdb.org/#262856> and <http://www.youtube.com/watch?v=fFrkjlmxJOK>)

3) Arno Tüngler  
 Am Steinfeld  
 D-65618 Selters  
 Germany [atungler@yahoo.com](mailto:atungler@yahoo.com)

*Chessproblems.ca Bulletin 12/2014*



phser-a=>b in 11 moves C+ (5+11)  
 2 solutions

(4+9)

**I.** 1.Qb2+ Sd2 2.Kxd6 3.Sc4! 4.Qb5 5.Sb2+ Sec4+ 6.Kxc6 7.Qh5+ Sf3 8.Se5 9.Sg4 10.Qe5+ Sfxe5+ 11.Kd5 a=>b

**II.** 1.Qg4+ Sf3 2.Kxc6 3.Se5! 4.Qe6 5.Sg4+ Sce5+ 6.Kxd6 7.Qa2+ Sd2 8.Sc4 9.Sb2 10.Qc4+ Sdxc4+ 11.Kd5 a=>b

Absolute parallel diagonal/orthogonal echo with helpful place-exchange (“Platzwechsel”) of the two black knights – once clockwise and once anti-clockwise.

**DEFINITION:**

**PARRY SERIES MOVER:**

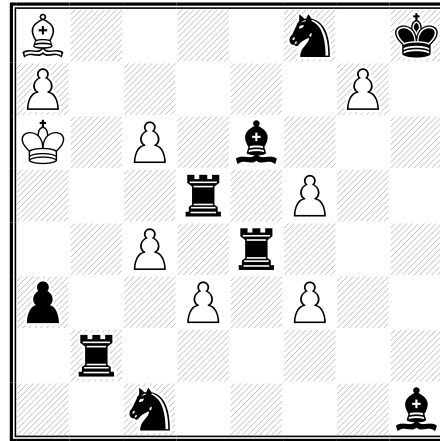
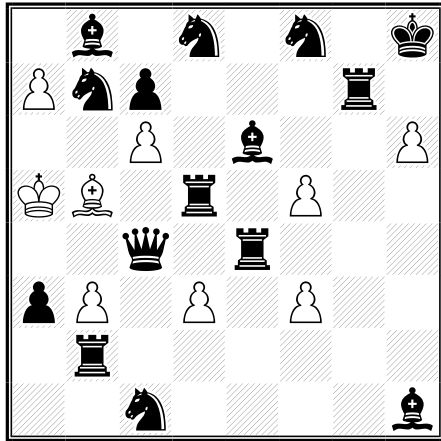
**A PARRY SERIES-MOVER DIFFERS FROM A NORMAL SERIES-MOVER, PRIOR TO THE LAST MOVE, AS FOLLOWS:**

- **THE SERIES-SIDE MAY GIVE CHECK DURING THE SERIES**
- **WHEN CHECKED, THE IDLE-SIDE MUST IMMEDIATELY PARRY THE THREAT**
- **A PARRY-MOVE MAY BE HELPFUL OR DEFENSIVE, DEPENDING ON THE GENRE**
- **AFTER A CHECK-AND-PARRY, THE SERIES-SIDE CONTINUES THE SERIES.**

**PHSER-A=>B MEANS THAT WHITE PLAYS THE SERIES, THE OTHER SIDE MOVES ONLY TO PARRY CHECK AND PARRIES ARE HELPFUL.**

4) Arno Tüngler  
 Am Steinfels  
 D-65618 Selters  
 Germany [atungler@yahoo.com](mailto:atungler@yahoo.com)

F590 *Problem Paradise* 04-06/2013



Series- a=>b in 387 moves C+ (9+15)

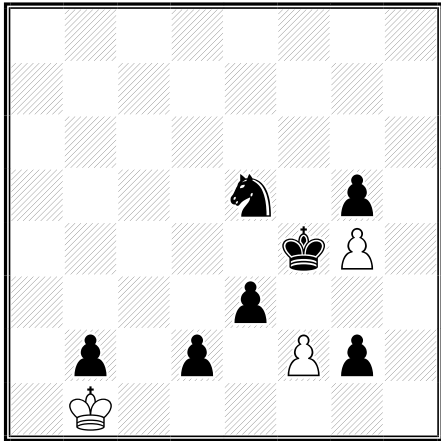
(9+9)

Short solution: 1.Ka6 2.bxc4 13.Bxb7 24.Bb5 26.Ka4 37.Bb3 39.Kc3 40.Bc2 42.Kd1 53.Be2  
 55.Kf1 66.Bg2 69.Kh3 80.Bg4 82.Kh5 93.Bg6 95.Kf6 96.Bf7 98.Ke8 109.Bd7 110.Kxd8  
 111.Ke8 122.Bf7 124.Kf6 125.Bg6 127.Kh5 138.Bg4 140.Kh3 151.Bg2 154.Kf1 165.Be2  
 167.Kd1 178.Bc2 180.Kc3 181.Bb3 183.Ka4 194.Bb5 198.Kxb8 202.Ka4 213.Bb3 215.Kc3  
 216.Bc2 218.Kd1 229.Be2 231.Kf1 242.Bg2 245.Kh3 256.Bg4 258.Kh5 269.Bg6 271.Kf6  
 272.Bf7 274.Ke8 285.Bd7 287.Kxc7 289.Ke8 300.Bf7 302.Kf6 303.Bg6 305.Kh5 316.Bg4  
 318.Kh3 329.Bg2 332.Kf1 343.Be2 345.Kd1 356.Bc2 358.Kc3 359.Bb3 361.Ka4 372.Bb5  
 374.Ka6 386.Ba8 387.hxg7+ a=>b

New series-a=>b-length record for legal positions with promoted force, 67 moves more than the former record! At the same time it is the longest of all series-movers with orthodox legal position and without fairy conditions. The wK with assistance of the wB needs to undertake four very long circuits to capture the black units on b8, c7 and d8 and return to a6.

5) Arno Tüngler  
Am Steinfels  
D-65618 Selters  
Germany [atungler@yahoo.com](mailto:atungler@yahoo.com)

11023 *feenschach* 09-10/2014



pser-h#9 (parry-series-helpmate in 9) C+  
(3+7)

1.d1=R+ Kc2 2.Ra1! 3. b1=B+ Kd1 4.Be4+ Ke2 5.Rh1! 6.g1=S+ Kf1 7.Sgf3+ Kg2 8.Rg1+ Kh3  
9.Rg3+ hxg3#

Two “Indian” maneuvers in order to allow for the wK-trip to h3. All three thematic officers are promoted during the game. Ideal mate.

**DEFINITION: PARRY SERIES MOVER:**

**A PARRY SERIES-MOVER DIFFERS FROM A NORMAL SERIES-MOVER, PRIOR TO THE LAST MOVE, AS**

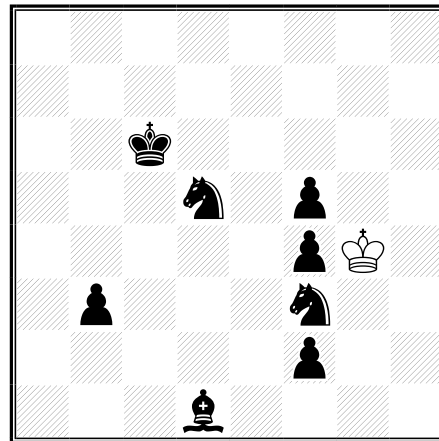
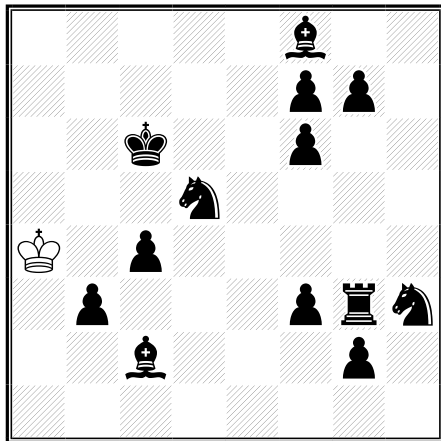
**FOLLOWS:**

- **THE SERIES-SIDE MAY GIVE CHECK DURING THE SERIES**
- **WHEN CHECKED, THE IDLE-SIDE MUST IMMEDIATELY PARRY THE THREAT**
- **A PARRY-MOVE MAY BE HELPFUL OR DEFENSIVE, DEPENDING ON THE GENRE**
- **AFTER A CHECK-AND-PARRY, THE SERIES-SIDE CONTINUES THE SERIES.**

**PSER-H# MEANS THAT BLACK PLAYS THE SERIES, THE OTHER SIDE MOVES ONLY TO PARRY CHECK AND PARRIES ARE HELPFUL.**

6) Arno Tüngler  
 Am Steinfels  
 D-65618 Selters  
 Germany [atungler@yahoo.com](mailto:atungler@yahoo.com)

10712 *feenschach* 05/2013



psr-a=>b in 243 moves C? (1+13)  
 Vogtländer Chess

(1+8)

Short solution: 1.Ka5 8.Kxf8 21.Ke2+ f2 24.Kb1+ Bd1 38.Kh6+ g6 (oder g5) 53.Ke2+ Bc2  
 69.Kh5+ g5 70.Kh4+ g4 85.Kb1+ Bd1 100.Kxg4+ Rf3 117.Ke2+ Bc2 135.Kf5+ Rd3 136.Ke5+  
 f5 137.Ke4+ f4 138.Kf5 139.Kg5+ Sg1 153.Kb1+ Bd1 169.Kh3+ Sf3 173.Kxd3+ c3 190.Kb2+  
 c2 191.Kb1+ c1=S (or B) 192.Kxc1 209.Kxg2 211.Ke2+ Bc2 217.Kg6+ f5 229.Kb1+ Bd1  
 243.Kg4# a=>b

Not just a length record but clear logical maneuvers of the lonely white king to force the black units into their final positions. The seven forced underlined pendulum moves of the bB between c2 and d1 are partly used to prepare for specific double-checks that can only be parried with the needed moves by Black.

*Impossible to check with computer as there are multiple parry possibilities after weak white checks. For a human solver it is immediately clear that i.e. 1.Ka3+? is impossible because after 1...Kc5/d6! there is never again a possibility to force the bK back to c6...*

**DEFINITIONS: PARRY SERIES MOVER:**

**A PARRY SERIES-MOVER DIFFERS FROM A NORMAL SERIES-MOVER, PRIOR TO THE LAST MOVE, AS FOLLOWS:**

- **THE SERIES-SIDE MAY GIVE CHECK DURING THE SERIES**
- **WHEN CHECKED, THE IDLE-SIDE MUST IMMEDIATELY PARRY THE THREAT**
- **A PARRY-MOVE MAY BE HELPFUL OR DEFENSIVE, DEPENDING ON THE GENRE**
- **AFTER A CHECK-AND-PARRY, THE SERIES-SIDE CONTINUES THE SERIES.**

**PSER-A=>B MEANS THAT WHITE PLAYS THE SERIES, THE OTHER SIDE MOVES ONLY TO PARRY CHECK AND PARRIES ARE DEFENSIVE.**

**VOGTLÄNDER CHESS: A SIDE IS IN CHECK ONLY IF IT THREATENS TO CAPTURE THE OPPOSING KING.**