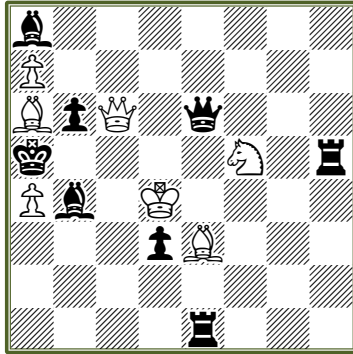


1 Borislav Gadjanski

Julia's fairies – 2015 (II), No. 880



hs#3 b) ♖a4→f3 7+8 C+
 c) ♙a6→b3

- a) 1. ♙b5 ♙h6 2. ♚e5 ♙d2 3. ♚c3+ ♙:c3#
- b) 1. ♘d6 ♙c8 2. ♚e4 ♙:a6 3. ♘c4+ ♙:c4#
- c) 1. ♙g5 ♙e8 2. ♚d5 ♙b5 3. ♙d8+ ♙:d8#

A = Sf5, B = Be3, C = Qc6

- a) pinned: A, B; captured in last move: C
- b) pinned: B, C; captured in last move: A
- c) pinned: C, A; captured in last move: B

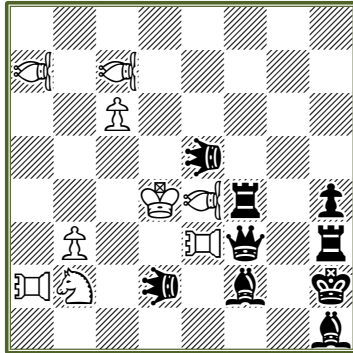
Mate on a 3 different fields with double self-pinning
 and sacrifices thematic white pieces in a cyclic order

FEN: b7/P7/BpQ1q3/k4N1r/Pb1K4/3pB3/8/4r3, **Stipulation** hs#3
white Kd4 Qc6 Ba6e3 Sf5 Pa7a4 - **black** Ka5 Qe6 Rh5e1 Ba8b4 Pb6d3
 b) Move a4 f3, c) Move a6 b3

Solutions: a) 1. Bb5 Qh6 2. Ke5 Bd2 3. Qc3+ B:c3#
 b) 1. Sd6 Qc8 2. Ke4 Q:a6 3. Sc4+ Q:c4#
 c) 1. Bg5 Qe8 2. Kd5 ♙b5 3. Bd8+ Q:d8#

2 Borislav Gadjanski

1st Pr. SuperProblem TT-134, 2015



- a) 1...♙:e4+ 2.♚c3 ♜g2 3.PAg3 LE:g3 4.PA:d2 (zzw) LE:c7#
 b) 1...♙:e3+ 2.♚d5 ♜g3 3.VAg2 LE:g2 4.VA:e5(zzw) LE:a2#

- 2 x Zugzwang in the last move with the black queen on the board
- 5 pairs of pieces exchange roles
- Reciprocal white sacrifices: one W-officer is captured passively and the other in an active sacrifice
- Zilahi in white's last move

hs#3,5 b) ♘b2→d6 8+9 C+

- ♖ = Pao: a2 e3
 ♗ = Vao: a7 c7 e4
 ♜ = Leo: d2 e5

FEN: 8/(B3)1(B3)5/2P5/4(q3)3/3K(B3)r1p/1P2(R3)q1r/(R3)N1(q3)1b1k/7b, **Stipulation** hs#3,5

white Kd4 Sb2 Pb3c6 PAa2e3 VAa7c7e4 - **black** Kh2 Qf3 Rf4h3 Bf2h1 Ph4 LEd2e5

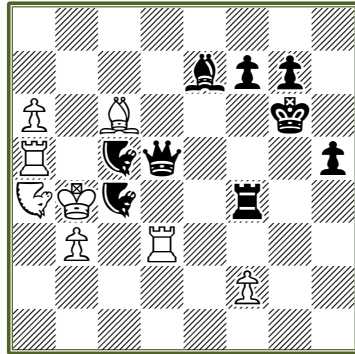
b) Move b2 d6

Solutions: a) 1...Q:e4+ 2.Kc3 Qg2 3.PAg3 LE:g3 4.PA:d2 LE:c7#

b) 1...Q:e3+ 2.Kd5 Qg3 3.VAg2 LE:g2 4.VA:e5 LE:a2 #

3 Borislav Gadjanski

StrateGems No 61/FB 1244, 2013



- a) 1.♖c8 ♔h1 2.♗:h1-b1 ♜:a6-a7+ 3.♖d6++ ♞:d6-d3(+++)#
 b) 1.♖e2 ♔d8 2.♖:d8-b6 ♜:a5-a7+ 3.♗e4++ ♞:e4-c6(+++)#

- 2 x (double-check + triple-check) in last W & B move.
- ODT with take & make battery creation
- 2 x Bicolor Bristol with annihilation
- 4 pairs of units reciprocally exchange functions during the solution (Rd3&Bc6, Rf4&Be7, Nc4&Nc5 + Ra5&Pa6)

hs#3 b)♗a6→h4 8+9 C+

Take&MakeChess

♞♜ = Nightrider: a4 c4 c5

FEN: 8/4bpp1/P1B3k1/R1(n2)q3p/(N2)K(n2)2r2/1P1R4/5P2/8, **Stipulation** hs#3, **Condition** Take&MakeChess

white Kb4 Rd3a5 Bc6 Pb3f2a6 Na4 - **black** Kg6 Qd5 Rf4 Be7 Pg7f7h5 Nc5c4

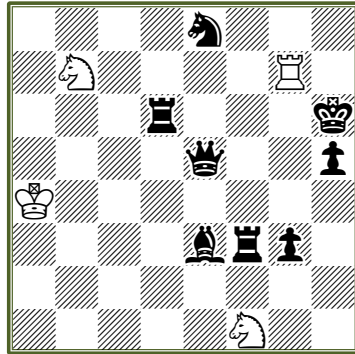
b) Move a6 h4

Solutions: a) 1.Nc8 Qh1 2.B:h1-b1 N:a6-a7+ 3.Rd6 + N:d6-d3#

b) 1.Ne2 Qd8 2.R:d8-b6 N:a5-a7+ 3.Be4 + N:e4-c6 #

4 Borislav Gadjanski

1st Pr. K. Seetharaman - 64 JT, 2013



h#3 2 Sol 4+8 C+
Superguards

1.♙a7! ♚e3 [A] 2.♖b6 ♜f5! (♜d6?) 3.♗b8! ♜bd6 [B]#
1.♖d1! ♜d6 [B] 2.♙d2 ♜f5! (♜e3?) 3.♗e1! ♜1e3 [A]#

Interchange of W1 & W3 moves without a move of the black king
Reciprocal Superguards-anti-batteries
Critical black hideaway moves
Umnov
The mutual shut off of the BR and BB
The interchange of function of white knights.
Meredith

FEN: 4n3/1N4R1/3r3k/4q2p/K7/4brp1/8/5N2 , **Stipulation** h#3, **Condition** Superguards

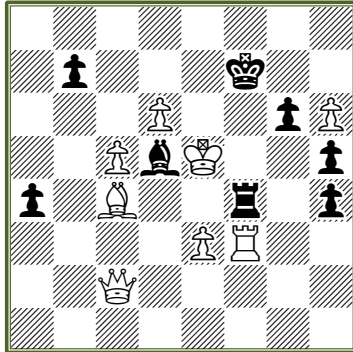
white Ka4 Rg7 Sb7f1 - **black** Kh6 Qe5 Rd6f3 Be3 Se8 Ph5g3

Solutions: 1.Ba7 Se3 2.Rb6 Sf5 3.Qb8 Sbd6#

1.Rd1 Sd6 2.Bd2 Sf5 3.Qe1 S1e3#

5 Borislav Gadjanski

1st-2nd Pr. SuperProblem TT-134, 2015



- a) 1. ♖b3! (♘a2?) ♙:b3 2. ♖g3 ♜c4 3. ♚d5 ♛f6 4. ♜f2+ ♞f4#
 b) 1. ♞f2! (♞f1?) ♞:f2 2. ♘b5 ♙f3 3. ♛f4 ♚e6 4. ♜c4+ ♘d5#

- ODT
- Active sacrifice and dual avoidance in the first move
- Reciprocal Black battery creation.
- Switchback in the mating move.

hs#4 b) ♗h6→g5 8+8 C+

FEN: 8/1p3k2/3P2pP/2PbK2p/p1B2r1p/4PR2/2Q5/8, **Stipulation** hs#4

white Ke5 Qc2 Rf3 Bc4 Pe3d6c5h6 - **black** Kf7 Rf4 Bd5 Ph4h5b7a4g6

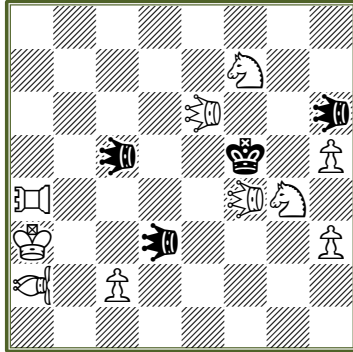
b) Move h6 g5

Solutions: a) 1. Bb3! (Ba2?) B:b3 2. Rg3 Rc4 3. Kd5 Kf6 4. Qf2+ Rf4#

b) 1. Rf2! (Rf1?) R:f2 2. Bb5 Bf3 3. Kf4 Ke6 4. Qc4+ Bd5#

6 Borislav Gadjanski

18th -20th Pl. 9.WCCT, 2013 (8 points)



hs#3 **2 sol** 10+4 C+

♖ = Pao: a4

♗ = Vao: a2

♘♙ = Leo: e6, f4, h6, c5, d3

1.LEe6-a6! LEc5-a7!
 2.LEf4-b4 LEh6-b6
 3.♘g4-e3+ LEa7:e3#

1.LEf4-c1! LEd3-d1!
 2.LEe6-b3 LEh6-d2
 3.♗f7-d6+ LEd1:d6#

FEN: 8/5N2/4(Q3)2(q3)/2(q3)2k1P/(R3)4(Q3)N1/K2(q3)3P/(B3)1P5/8, **Stipulation** hs#3

white Ka3 Sf7g4 Ph5h3c2 LEe6f4 PAa4 VAa2 - **black** Kf5 LEh6c5d3

Solutions: 1.LEe6-a6 LEc5-a7 2.LEf4-b4 LEh6-b6 3.Sg4-e3+ LEa7*e3#

1.LEf4-c1 LEd3-d1 2.LEe6-b3 LEh6-d2 3.Sf7-d6+ LEd1*d6#