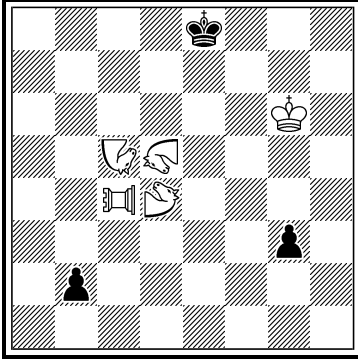


1

**Cornel Pacurar**

*Problem Paradise 2012*

*2<sup>nd</sup> Honourable Mention*



h=2                      C+ (5+3)

4 Solutions

♘ = Camel d4

♙ = Zebra d5

♞ = Nightrider c5

♝ = Giraffe c4

**Solutions:**

**I)** 1.b2-b1=Z CA d4×g3 2.Zb1-d4+ CAg3×Zd4 =

**II)** 1.b2-b1=N Zd5×g3 2.Nb1-d5 Zg3×Nd5 =

**III)** 1.b2-b1=GI Nc5×g3 2.GIb1-c5+ Ng3×GIc5 =

**IV)** 1.b2-b1=CA GIc4×g3 2.CAb1-c4 GIg3×CAc4 =

**Comments:**

*“Simple, but very effective idea: each white fairy piece controls a different flight square around the black king and captures the same black pawn on the focal point g3. The second black pawn promotes on the other focal square b1, to a fairy piece that can access the square vacated by the white piece on its first move. Finally, the white piece switches back and captures the black promotee, restoring the initial position, with both black pawns eliminated. Good geometry and cycle of the type of capturing vs. captured pieces: CA×Z, Z×N, N×GI, GI×CA.”*

(Kostas Prentos, Judge)

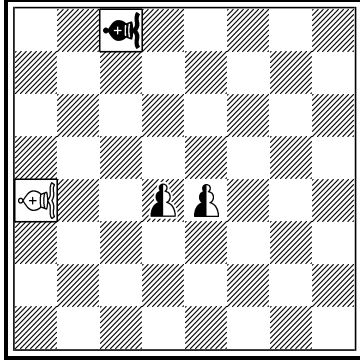
F522 in *Problem Paradise* 58, April - June 2012, [published in February 2013.](#)

2

Cornel Pacurar

12<sup>th</sup> Tzuica Tourney 2014

4<sup>th</sup> Prize, Fairy Section



hs#3 C+ (1+1+2)

Parrain Circe,  
Anti-SuperCirce

b) ♔a4→a8

+c) ♜c8→a6

+d) ♔a8→f8

♔♜ = Royal Eagle a4, c8

♞ = Neutral Pawn d4, e4

### Solutions:

a) 1.rEAa4-d5 nPe4-e3 2.nPe3×d4[nPd4→h8=nQ]+ nQh8-e5[+nPa1=nB]+  
3.nBa1×e5[nBe5→h3]+ nBh3-g2 [+nQd4] #

b) 1.nPe4-e5 nPe5×d4[nPd4→f1=nR] 2.nRf1-f5 [+nPd8=nS] rEAa8-e4  
3.rEAa8×f5[wrEAf5→g5] nSd8-e6 [+nRg3] #

c) 1.rEAa8-f5 nPd4-d3 2.nPd3×e4[nPe4→a8=nQ]+ nQa8-d5[+nPh1=nB]+  
3.nBh1×d5[nBd5→f1]+ nBf1-h3 [+nQf7] #

d) 1.nPd4-d5 nPd5×e4[nPe4→g1=nR] 2.nRg1-g5[+nPe8=nS] nRg5-g7  
3.nSe8×g7[nSg7→h8] nSh8-g6 [+nRf5] #

### Comments:

Thematic tourney: Help-selfmates (hs#n) with at least two solutions featuring mate by double check.

*“Can the double-check theme be realized with only 4 units on the board? This amazing Wenigsteiner provides the answer by showing four solutions ending with double check. It also boasts a double AUW combined with two pairs of reciprocal captures of the neutral Pawns. An excellent candidate for the WenigsteinerJahres Preis 2014.”*

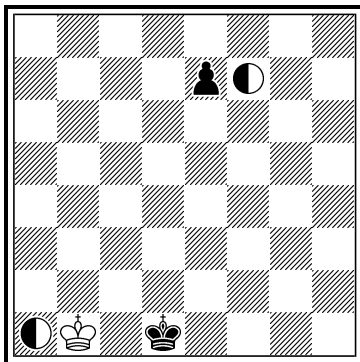
(Vlaicu Crişan & Eric Huber, Judges)

### 3

Cornel Pacurar

*Julia's Fairies 2014/III*

*2<sup>nd</sup> Prize*



ser-h#24      C+ (1+2)

♙ = Imitator a1, f7

#### Solution:

1.Kd1-d2[Ia2,If8] 2.e7-e6[Ia1,If7] 3.Kd2-d3[Ia2,If8] 4.e6-e5[Ia1,If7] 5.Kd3-d4[Ia2,If8]  
6.e5-e4[Ia1,If7] 7.Kd4-d5[Ia2,If8] 8.e4-e3[Ia1,If7] 9.Kd5-d6[Ia2,If8] 10.e3-e2[Ia1,If7]  
11.Kd6-d7[Ia2,If8] 12.e2-e1=S[Ia1,If7] 13.Se1-g2[Ic2,Ih8] 14.Kd7-d6[Ic1,Ih7] 15.Sg2-  
e3[Ia2,If8] 16.Kd6-d5[Ia1,If7] 17.Se3-g4[Ic2,Ih8] 18.Kd5-d4[Ic1,Ih7] 19.Sg4-e5[Ia2,If8]  
20.Kd4-d3[Ia1,If7] 21.Se5-g6[Ic2,Ih8] 22.Kd3-d2[Ic1,Ih7] 23.Sg6-e7[Ia2,If8] 24.Kd2-  
d1[Ia1,If7] Kb1-c2[Ib2,Ig8] #

#### Comments:

*“[...] a good composer can devise a clear strategy with imitators, or use them to produce memorable settings of other themes. This is a superb example of the former; in fact, it is one of the best imitator problems I have ever seen! There seems to be a set-mate by 1...Kc2 (Ib2,g8)+, but Black defends by 2.e6-e7(Ib1,g7)! with no check because of Ib1. So Black has to play a 23-move (!) foreplan with the sole effect of replacing Pe7 with a Se7, which has no imitator-legal move at all. The imitators prohibit Pe7 from walking straight down to a S promotion, so like an elevator the bK has to ascend as the bP descends to e1 for the S promotion. The bK path is unique: the left edge prevents him from stepping on to the c file, and the wK stops K moves to the e file which would make the next bP move illegal. After the promotion, the mechanism reverses and the bS ascends in order to allow the bK to descend back to d1 (this is the only reason the bS has to return to e7). Again, the edge and the wK force the bK to walk in a straight line – but now in a different way! The board edges also force the bS to walk a unique zig-zag path. Finally, we must consider the choice of promotion. Nothing is gained by a promotion to bQ or bR, as Black can still defend with Q(R)e7-e6. But a bishop promotion is possible, and it can in fact be brought back to e7 (bB zigzagging e1-f2-e3-f4 etc, and bK echoing with d7-e6-d5-e4 etc). But a bBe7 can defend by 24...Kc2 (Ib2,g8)+ 25.Bd6 (Ia1,f7)! or Bf6!”*

(Kjell Widlert, Judge)

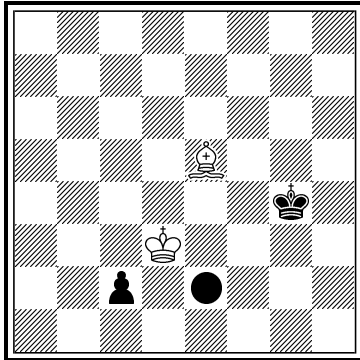
4

**Cornel Pacurar**

*Christmas Blitz JF-2014*

*2014*

*Special Prize, Section B*



pser-h#6      C+ (2+2)

2 Solutions

● = Imitator e2

**Solutions:**

**I)** 1.c2-c1=S[Ie1]+ Kd3-e3[If1] 2.Sc1-d3[Ig3] 3.Kg4-g3[Ig2] 4.Kg3-f2[If1]+ Ke3-f4[Ig2]  
5.Kf2-e2[If2]+ Kf4-g3[Ig1] 6.Ke2-e3[Ig2] Kg3-f2[If1] #

**II)** 1.c2-c1=Q[Ie1] 2.Qc1-b1[Id1]+ Be5-d6[Ic2] 3.Kg4-f5[Ib3]+ Kd3-e2[Ic2] 4.Qb1-d3[Ie4]+ Ke2-f2[If4] 5.Kf5-e4[Ie3] 6.Ke4-e3[Ie2]+ Bd6-e5[If1] #

**Comments:**

Thematic tourney. Section B: up to 8-moves long Series and Parry-Series with one or more Imitators.

*“Another excellent Tanagra with a very strange idea! Optically, the mate pictures are almost identical in both phases, but in fact there are two significant differences between the play in the first solution (block on e3 with a Knight!) and in the second solution (block on e3 with a Queen!). At the same time, the w.King realises two quite different paths to square 'f2'!”*

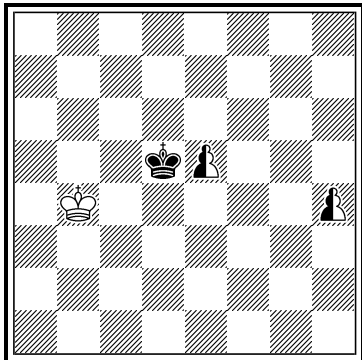
(Petko Petkov, Judge)

5

Cornel Pacurar

*KoBulChess 2014*

*Commendation*



ser-h#3 C+ (1+1+2)

Super Circe

2 Solutions

♙ = Neutral Pawn

**Solutions:**

**I)** 1.Kd5×e5 [+nPd5]! (1.Kd5×e5 [+nPh8=nQ]?) 2.Ke5×d5 [+nPh8=nQ] 3.nQh8×h4  
[+nPf6]+ nQh4×f6 [+nPh1=nB] #

**II)** 1.Kd5×e5 [+nPd8=nQ] 2.nQd8×h4 [+nPg4]! (2.nQd8×h4 [+nPc5]?) 3.nQh4×g4  
[+nPc5]+ Kb4×c5 [+nPa1=nB] #

**Comments:**

*“Bei diesem Wenigsteiner greift Supercirce in allen Zügen.”*  
(Franz Pachl, Judge)

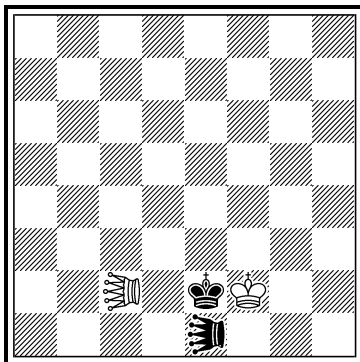
6

**Cornel Pacurar**

*Denis Blondel MT 2014*

*6<sup>th</sup> Honourable Mention,*

*Section B*



hs#5.5            C+ (2+2)

Anti-Kings

PWC

2 Solutions

♞♞ = Locust c2, e1

**Solutions:**

**I)** 1...Ke2-d3 2.Kf2-e2 Kd3×c2[+wLd3] 3.Ke2-d1 Kc2-b3 4.Kd1×e1[+bLd1] Ld1×d3-d4[+wLd1] + 5.Ld1×d4-d5[+bLd1] Ld1×d5-d6[+wLd1] + 6.Ld1×d6-d7[+bLd1] + Ld1×d7-d8[+wLd1] #

**II)** 1...Ke2-d2 2.Kf2×e1[+bLf2] Kd2-d3 + 3.Ke1-e2 Kd3×c2[+wLd3] 4.Ke2×f2[+bLe2] Kc2-d2 5.Kf2-g2 Le2×d3-c4[+wLe2] + 6.Le2×c4-b5[+bLe2] + Le2×b5-a6[+wLe2] #

**Comments:**

Thematic tourney. Section B: problems of any type with Rose-family and/or Locust-family pieces, employing other fairy conditions and/or units.

*“Un Wenigsteiner spirituel avec duels de Locustes en écho diagonal/orthogonal.”*  
(Jacques Rotenberg & Michel Caillaud, Judges)

Award published online on December 31<sup>st</sup>, 2015.